

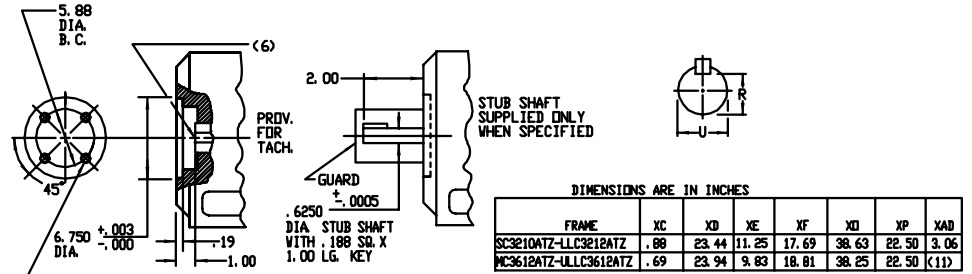
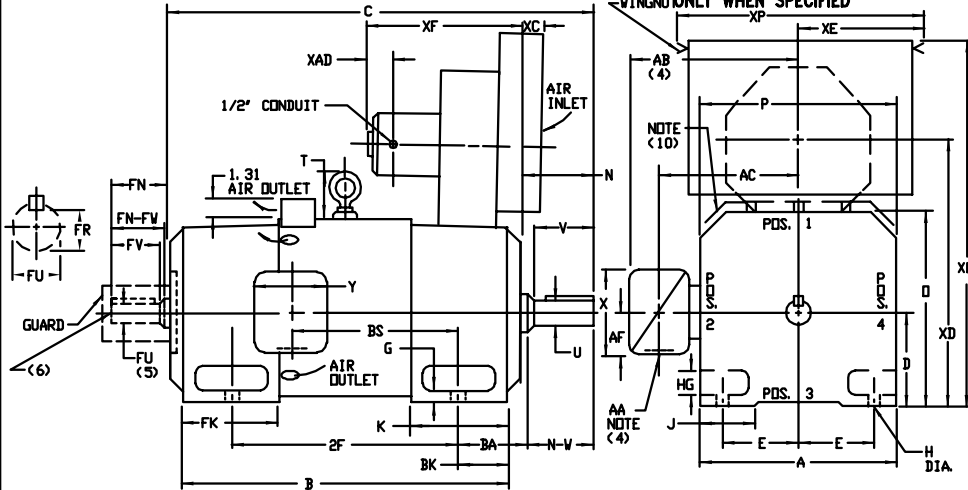
INDUSTRIAL DIRECT CURRENT MOTORS AND GENERATORS - RPM III

ENCLOSURE: DRIP-PROOF FULLY-GUARDED, SPLASHPROOF
MOUNTING: FOOT

COOLING: FORCE VENTILATED WITH INTEGRAL BLOWER AND MOTOR AIR FILTERED-SPECIAL BAFFLE

ACCESSORIES: PROVISION FOR TACHOMETER MOUNTING ONLY WHEN SPECIFIED

FRAMES SC3210ATZ THRU ULLC3612ATZ



DIMENSIONS ARE IN INCHES

FRAME	XC	XD	XE	XF	XD	XP	XAD
SC3210ATZ-LLC3212ATZ	.88	23.44	11.25	17.69	38.63	22.50	3.06
MC3612ATZ-ULLC3612ATZ	.69	23.94	9.83	18.81	38.25	22.50	(11)

FRAME	A	DK(1)	E	G	H	HG	J	D	P	T	BA	K	FK	STD. LG(6)	BK
SC3210ATZ-LLC3212ATZ	15.30	8.00	6.25	.75	.69	2.25	3.00	15.81	15.62	4.25	5.25	6.75	7.94	10.44	4.00
MC3612ATZ-ULLC3612ATZ	17.50	9.00	7.00	.88	.81	2.62	3.50	17.81	17.62	4.25	5.88	7.25	8.56	10.31	4.62

FRAME	METHOD OF DRIVE	B		DRIVE END SHAFT AND KEY										OPPOSITE DRIVE END SHAFT AND KEY				WT. LBS.				
		STD. LG(6)	STD. LG(6)	BS	2F	N	H-W	UK(2)	V	RC(3)	SQ. LGTH.	FN	FN-FV	FK(2)	FV	FR(3)	SQ. LGTH.		BK			
SC3210ATZ-LSC3210ATZ	(9)	36.25	38.75	28.31	30.81	13.38	20.00	5.50	5.25	2.625	5.00	2.275	6.25	4.00	4.75	4.50	2.250	4.25	1.972	500	3.25	1115
MC3212ATZ-LMC3212ATZ	(9)	39.25	41.75	31.31	33.81	16.38	25.00	5.50	5.25	2.625	5.00	2.275	6.25	4.00	4.75	4.50	2.250	4.25	1.972	500	3.25	1210
LC3212ATZ-LLC3212ATZ	(9)	41.25	43.75	33.31	35.81	18.38	25.00	5.50	5.25	2.625	5.00	2.275	6.25	4.00	4.75	4.50	2.250	4.25	1.972	500	3.25	1290
UMC3212ATZ-ULMC3212ATZ	BELTED	39.75	42.25	31.31	33.81	16.38	25.00	6.00	5.75	2.875	5.50	2.450	7.50	4.25	4.75	4.50	2.250	4.25	1.972	500	3.25	1180
MC3612ATZ-LMC3612ATZ	COUPLED	42.88	44.62	34.44	36.19	18.12	28.00	6.00	5.75	2.875	5.50	2.450	7.50	4.25	6.00	5.75	2.875	5.50	2.450	750	4.25	1685
UMC3612ATZ-ULMC3612ATZ	BELTED	43.62	45.38	34.44	36.19	18.12	28.00	6.75	6.50	3.250	6.25	2.831	7.50	5.00	6.00	5.75	2.875	5.50	2.450	750	4.25	1695
LC3612ATZ-LLC3612ATZ	COUPLED	46.62	48.38	38.19	39.94	21.88	28.00	6.00	5.75	2.875	5.50	2.450	7.50	4.25	6.00	5.75	2.875	5.50	2.450	750	4.25	1850
ULLC3612ATZ-ULLC3612ATZ	BELTED	47.38	49.12	38.19	39.94	21.88	28.00	6.75	6.50	3.250	6.25	2.831	7.50	5.00	6.00	5.75	2.875	5.50	2.450	750	4.25	1860

- (1) "D" DIMENSION WILL NOT BE EXCEEDED. SHIMS UP .06 INCHES IN THICKNESS ARE USUALLY REQUIRED FOR COUPLED OR GEARED MACHINES.
- (2) "UP" AND "FV" VARY -0.000 - .001
- (3) "R" AND "FR" VARY -0.000 - .015
- (4) TERMINAL BOX VARIES WITH H.P. FOR DIMENSIONS "AM", "AB", "AC", "AF", "X" AND "Y". REFER TO BOX D/S. (STD. 609979-1, *1/2" 609979-2, WILL 609979-3)
- (5) OPPOSITE DRIVE END SHAFT SUPPLIED ONLY WHEN SPECIFIED.
- (6) MOTOR SHAFT TAPPED FOR SCREW IN STUB SHAFT.
- (7) WHEN THE MOTOR APPLICATION DOES NOT REQUIRE THE USE OF DPP, DRIVE END, ADD .25 TO "C" DIA. FOR BRACKET COVER.
- (8) DIMENSION FOR FRAMES WITH PREFIX LSC, LMC, LLC, ULMC, OR ULLC.
- (9) METHOD OF DRIVE COUPLED OR BELTED.
- (10) FOR HORIZONTAL APPLICATIONS ONLY.
- (11) "XAD" DIMENSION IS NOT APPLICABLE TO C360 FRAMES. (BLOWER MOTOR HAS CONDUIT BOX.)

CUSTOMER IS RESPONSIBLE FOR DETERMINING THAT BALDOR'S PRODUCT WILL PERFORM SUITABLY IN THE INTENDED APPLICATION.

REV. DESC: LOADED TO BUS	VERSION: 00	TDR: 000000577407
REV. LTR: -	REVISED: 01:15:54 01/26/2011	BY: CONNAS
FILE: \RGG\00015\628		
MTL: -		

BALDOR

DIMENSION DRAWING, SC3210ATZ - ULLC3612ATZ, DPP, FOOT MTG.
SH 1 of 1