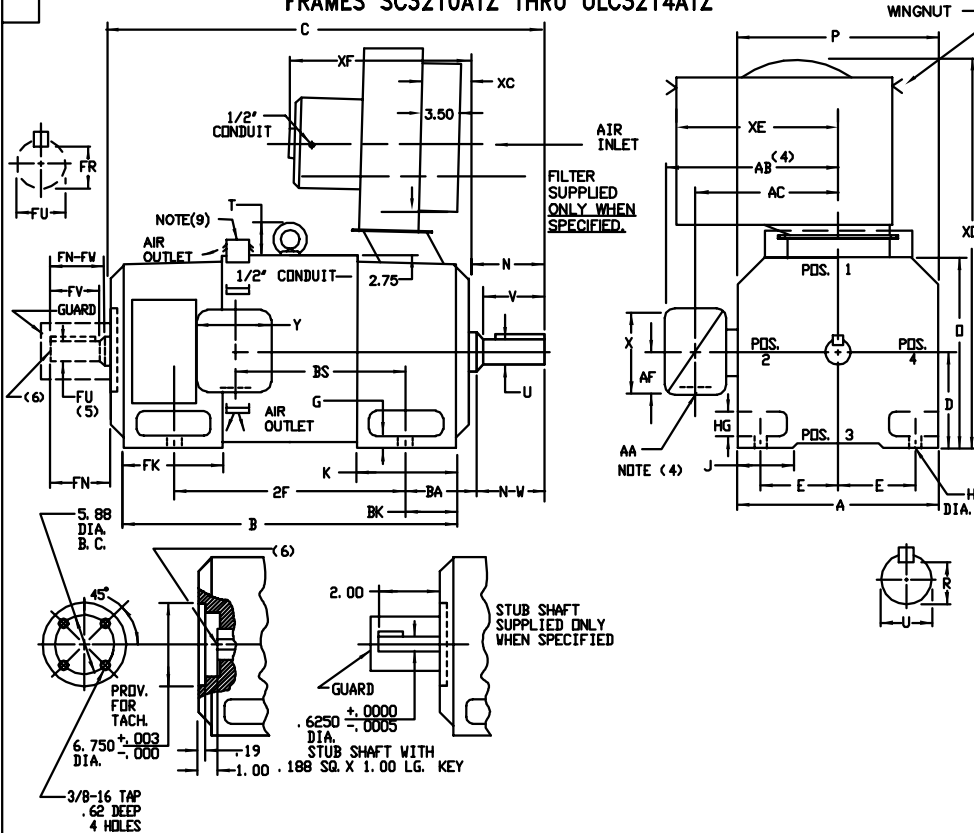


INDUSTRIAL DIRECT CURRENT MOTORS AND GENERATORS - RPM III

ENCLOSURE: DRIP-PROOF FULLY-GUARDED
SPLASHPROOF
MOUNTING: FOOT

COOLING: FORCE VENTILATED WITH INTEGRAL BLOWER AND MOTOR AIR FILTERED-SPECIAL BAFFLE

FRAMES SC3210ATZ THRU ULC3214ATZ



DIMENSIONS ARE IN INCHES

FRAME	XC	XE	XF	XO
SC3210ATZ-ULC3214ATZ	4.00	10.00	20.25	31.12

FRAME	A	DK(1)	E	G	H	HG	J	D	P	T	BA	K	FK		
													ST	LG (8)	BK
SC3210ATZ-ULC3214ATZ	15.50	8.00	6.25	.75	.69	2.25	3.00	15.81	15.62	3.54	5.25	6.75	7.94	10.44	4.00

FRAME	METHOD OF DRIVE	C (7)				DRIVE END SHAFT AND KEY							OPPOSITE DRIVE END SHAFT AND KEY (5)				VT. LBS.					
		STD.	LG. (8)	STD.	LG. (8)	BS	2F	N	N-W	UK(2)	V	R(3)	SQ.	LGTH.	FN	FN-FW		FK(2)	FV	FR(3)	SQ.	LGTH.
SC3210ATZ-LSC3210ATZ	COUPLED	36.25	38.75	28.31	30.81	13.38	20.00	5.50	5.25	2.625	5.00	2.275	625	4.00	4.75	4.50	2.250	4.25	1.972	500	3.25	1115
USC3210ATZ-ULC3210ATZ	BELTED	36.75	39.25	28.31	30.81	13.38	20.00	6.00	5.75	2.875	5.50	2.450	750	4.25	4.75	4.50	2.250	4.25	1.972	500	3.25	1120
NC3212ATZ-LMC3212ATZ	COUPLED	39.25	41.75	31.31	33.81	16.38	25.00	5.50	5.25	2.625	5.00	2.275	625	4.00	4.75	4.50	2.250	4.25	1.972	500	3.25	1210
LMC3212ATZ-ULC3212ATZ	BELTED	39.75	42.25	31.31	33.81	16.38	25.00	6.00	5.75	2.875	5.50	2.450	750	4.25	4.75	4.50	2.250	4.25	1.972	500	3.25	1215
LC3212ATZ-LLC3212ATZ	COUPLED	41.25	43.75	33.31	35.81	18.38	25.00	5.50	5.25	2.625	5.00	2.275	625	4.00	4.75	4.50	2.250	4.25	1.972	500	3.25	1290
ULC3212ATZ-LLC3212ATZ	BELTED	41.75	44.25	33.31	35.81	18.38	25.00	6.00	5.75	2.875	5.50	2.450	750	4.25	4.75	4.50	2.250	4.25	1.972	500	3.25	1295
C3214ATZ-LC3214ATZ	COUPLED	46.25	48.75	38.31	40.81	23.38	32.00	5.50	5.25	2.625	5.00	2.275	625	4.00	4.75	4.50	2.250	4.25	1.972	500	3.25	1470
ULC3214ATZ-ULC3214ATZ	BELTED	46.75	49.25	38.31	40.81	23.38	32.00	6.00	5.75	2.875	5.50	2.450	750	4.25	4.75	4.50	2.250	4.25	1.972	500	3.25	1475

- (1) 'D' DIMENSION WILL NOT BE EXCEEDED. SHIMS UP TO .06 INCHES IN THICKNESS ARE USUALLY REQUIRED FOR COUPLED OR GEARED MACHINES.
 - (2) 'U' & 'FU' VARY---+.000 ---.001
 - (3) 'R' & 'FR' VARY---+.000 ---.015
 - (4) TERMINAL BOX VARIES WITH H.P. FOR DIMENSIONS 'AA', 'AB', 'AC', 'AF', 'X' AND 'Y'. REFER TO BOX D/S. (STD. 699979-1, *X/P 609979-2, WILL 609979-3)
 - (5) OPPOSITE DRIVE END SHAFT SUPPLIED ONLY WHEN SPECIFIED.
 - (6) MOTOR SHAFT TAPPED FOR SCREW IN STUB SHAFT.
 - (7) WHEN THE MOTOR APPLICATION DOES NOT REQUIRE THE USE OF DPP. DRIVE END, ADD .25 TO 'O' DIM. FOR BRACKET COVER.
 - (8) DIMENSION FOR FRAMES WITH PREFIX LSC, LMC, LLC, LC, ULSC, ULMC, ULLC OR ULC.
 - (9) FOR HORIZONTAL APPLICATIONS ONLY.
- TERMINAL BOX CAN BE ROTATED FOR LEAD OUTLET AT TOP, SIDES OR BOTTOM.
TERMINAL BOX LOCATED ON OPPOSITE SIDE WHEN F-2, W-1, W-4, W-5, W-7, OR C-1 MOUNTING IS SPECIFIED.
BOX LOCATED ON TOP WHEN SPECIFIED.
BLOWER ASSEMBLY CAN BE LOCATED AT POSITIONS 1, 2, OR 4, EXCEPT BLOWER ASSEMBLY AND TERMINAL BOX CAN NOT BE LOCATED AT THE SAME POSITION.
MOTOR WEIGHT MAY VARY 15% FOR NON-STANDARD RATINGS AND/OR ACCESSORIES.
IF MOUNTING CLEARANCE DETAILS ARE REQUIRED, CONSULT FACTORY.

CUSTOMER IS RESPONSIBLE FOR DETERMINING THAT BALDOR'S PRODUCT WILL PERFORM SUITABLY IN THE INTENDED APPLICATION.

REV. DESC: LOADED TO BUS	VERSION: 00	TDR: 000000578087
REV. LTR: -	REVISED: 03:52:44 01/28/2011	BY: CONNAS
FILE: \RGG\00016\046		
MTL: -		

BALDOR

DIMENSION DRAWING, SC3210ATZ - ULC3214ATZ, DPP, FOOT MTC

SH 1 of 1