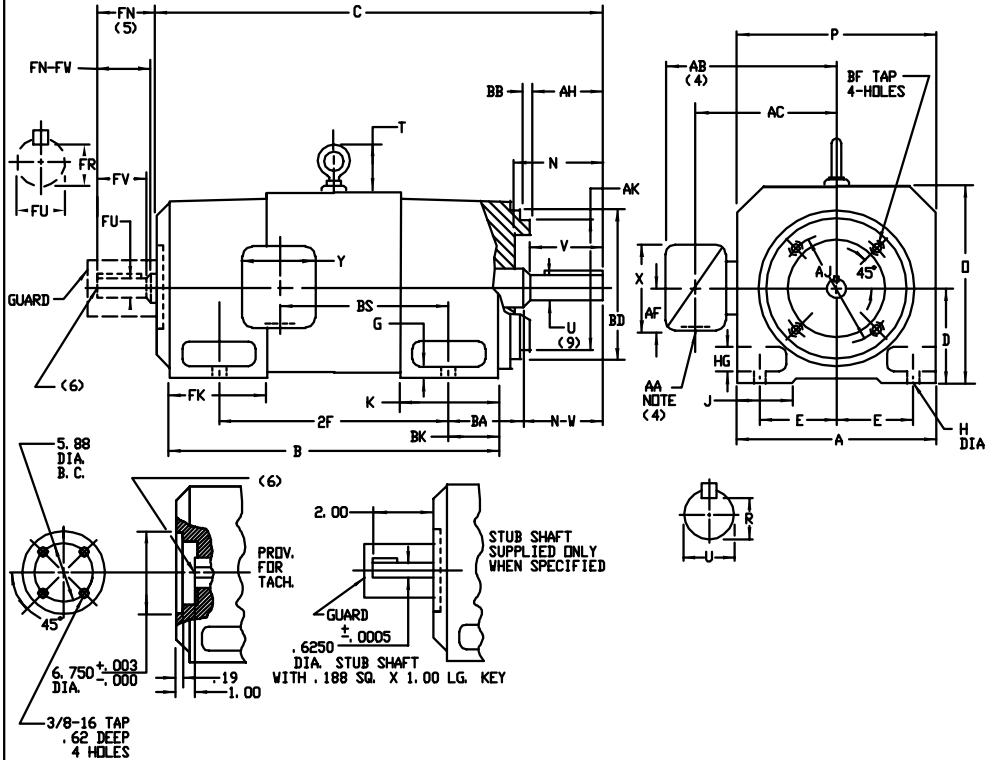


INDUSTRIAL DIRECT CURRENT MOTORS AND GENERATORS - RPM III

ENCLOSURE: DRIP-PROOF FULLY-GUARDED,
SPLASHPROOF, TOTALLY ENCLOSED
MOUNTING: FOOT, NEMA "C" FACE
METHOD OF DRIVE: COUPLED OR BELTED

COOLING: SELF-VENTILATED
NON-VENTILATED
ACCESSORIES: PROVISION FOR
TACHOMETER MOUNTING
ONLY WHEN SPECIFIED

FRAMES SC2113ATCZ THRU LC2812ATCZ
DRIVE END SHAFT PER NEMA AC MOTOR SHAFT



DIMENSIONS ARE IN INCHES

FRAME	BB	BD	BF TAP	BF TAP ' DEPTH	AJ	AK(B)
SC2113ATCZ-LC2113ATCZ	.25	8.75	1/2-13	.75	7.25	8.500
SC2512ATCZ-LC2512ATCZ	.25	10.88	1/2-13	.75	7.25	8.500
MC2812ATCZ-LC2812ATCZ	.25	12.75	1/2-13	.75	9.00	10.500

FRAME	A	D(1)	E	G	H	HG	J	D	P	T	BA	K	FK	BK
SC2113ATCZ-LC2113ATCZ	10.25	5.25	4.25	.44	.44	1.38	1.75	10.44	10.31	2.56	3.50	5.19	6.81	2.38
SC2512ATCZ-LC2512ATCZ	12.31	6.25	5.00	.50	.56	1.62	2.00	12.50	12.44	3.06	4.25	6.06	8.00	3.00
MC2812ATCZ-LC2812ATCZ	13.78	7.00	5.50	.62	.56	1.88	2.75	14.00	13.94	3.38	4.75	6.75	9.19	3.50

FRAME	C(7)	B	BS	2F	DRIVE END SHAFT AND KEY (9)										OPPOSITE DRIVE END SHAFT AND KEY(S)				VT, LBS	
					N	N-W	U(2)	AH	V	R(3)	SQ.	LGTH.	FN	FN-FV	FLK(2)	FV	FR(3)	SQ.		LGTH.
SC2113ATCZ	28.00	22.50	11.38	18.00	3.62	3.38	1.3750	3.12	3.12	1.201	.312	2.38	3.50	3.25	1.625	3.00	1.416	.375	2.25	325
MC2113ATCZ	29.25	23.75	12.62	18.00	3.62	3.38	1.3750	3.12	3.12	1.201	.312	2.38	3.50	3.25	1.625	3.00	1.416	.375	2.25	350
LC2113ATCZ	30.88	25.38	14.25	18.00	3.62	3.38	1.3750	3.12	3.12	1.201	.312	2.38	3.50	3.25	1.625	3.00	1.416	.375	2.25	380
SC2512ATCZ	31.44	25.06	12.06	20.00	4.25	4.00	1.625	3.75	3.75	1.416	.375	2.88	4.00	3.75	1.875	3.50	1.591	.500	2.50	515
MC2512ATCZ	32.94	26.56	13.56	20.00	4.25	4.00	1.625	3.75	3.75	1.416	.375	2.88	4.00	3.75	1.875	3.50	1.591	.500	2.50	550
LC2512ATCZ	34.44	28.06	15.06	20.00	4.25	4.00	1.625	3.75	3.75	1.416	.375	2.88	4.00	3.75	1.875	3.50	1.591	.500	2.50	590
MC2812ATCZ	37.25	29.94	14.25	22.00	4.88	4.62	1.875	4.38	4.38	1.591	.500	3.25	4.50	4.25	2.125	4.00	1.845	.500	3.00	785
LC2812ATCZ	39.50	32.19	16.50	22.00	4.88	4.62	1.875	4.38	4.38	1.591	.500	3.25	4.50	4.25	2.125	4.00	1.845	.500	3.00	860

- "D" DIMENSION WILL NOT BE EXCEEDED. SHIMS UP TO .03 INCHES IN THICKNESS ARE USUALLY REQUIRED FOR COUPLED OR GEARED MACHINES.
- "U" AND "FU" VARY----- UP TO 1.625 DIA. +.0000, -.0005.
- "R" AND "FR" VARY-----+.000 - .015.
- TERMINAL BOX VARIES WITH H.P. FOR DIMENSIONS "AA", "AB", "AC", "AF", "X" AND "Y", REFER TO BOX D/S. (STD. 609959-1, *V/P 609959-2, HILL 609959-3)
- OPPOSITE DRIVE END SHAFT SUPPLIED ONLY WHEN SPECIFIED.
- MOTOR SHAFT TAPPED FOR SCREW-IN STUB SHAFT.
- WHEN THE MOTOR APPLICATION DOES NOT REQUIRE THE USE OF DPP, DRIVE END, ADD .25 TO "C" DIM. FOR BRACKET COVER.
- "AK" VARIES +.000, -.003---FACE RUNOUT AND ECCENTRICITY .004 MAX. T. I. R.
- DRIVE END SHAFT DIMENSIONS PER SAME FRAME SIZE NEMA "AC" MOTOR SHAFT. TERMINAL BOX CAN BE ROTATED FOR LEAD OUTLET AT TOP, SIDES OR BOTTOM. TERMINAL BOX LOCATED ON OPPOSITE SIDE WHEN F-2, W-1, V-4, V-5, W-7, OR C-1 MOUNTING IS SPECIFIED. MOTOR WEIGHT MAY VARY FOR NON-STANDARD RATINGS AND/OR ACCESSORIES. IF MOUNTING CLEARANCE DETAILS ARE REQUIRED, CONSULT FACTORY.

CUSTOMER IS RESPONSIBLE FOR DETERMINING THAT BALDOR'S PRODUCT WILL PERFORM SUITABLY IN THE INTENDED APPLICATION.

REV. DESC: LOADED TO BUS	VERSION: 00	TDR: 000000577407
REV. LTR: -	REVISED: 10:50:08 01/26/2011	BY: CONNAS
FILE: \RGG\00015\549		
MTL: -		

BALDOR

DIMENSION DRAWING, SC2113ATCZ - LC2812ATCZ, DPP, TENV, FOOT MTG

SH 1 of 1