

DUTY MASTER ALTERNATING CURRENT MOTORS

616512-502

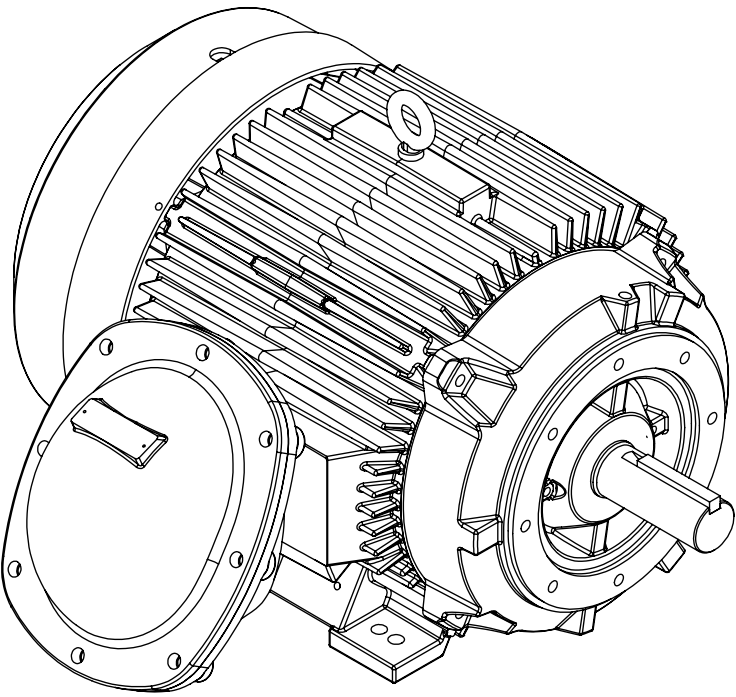
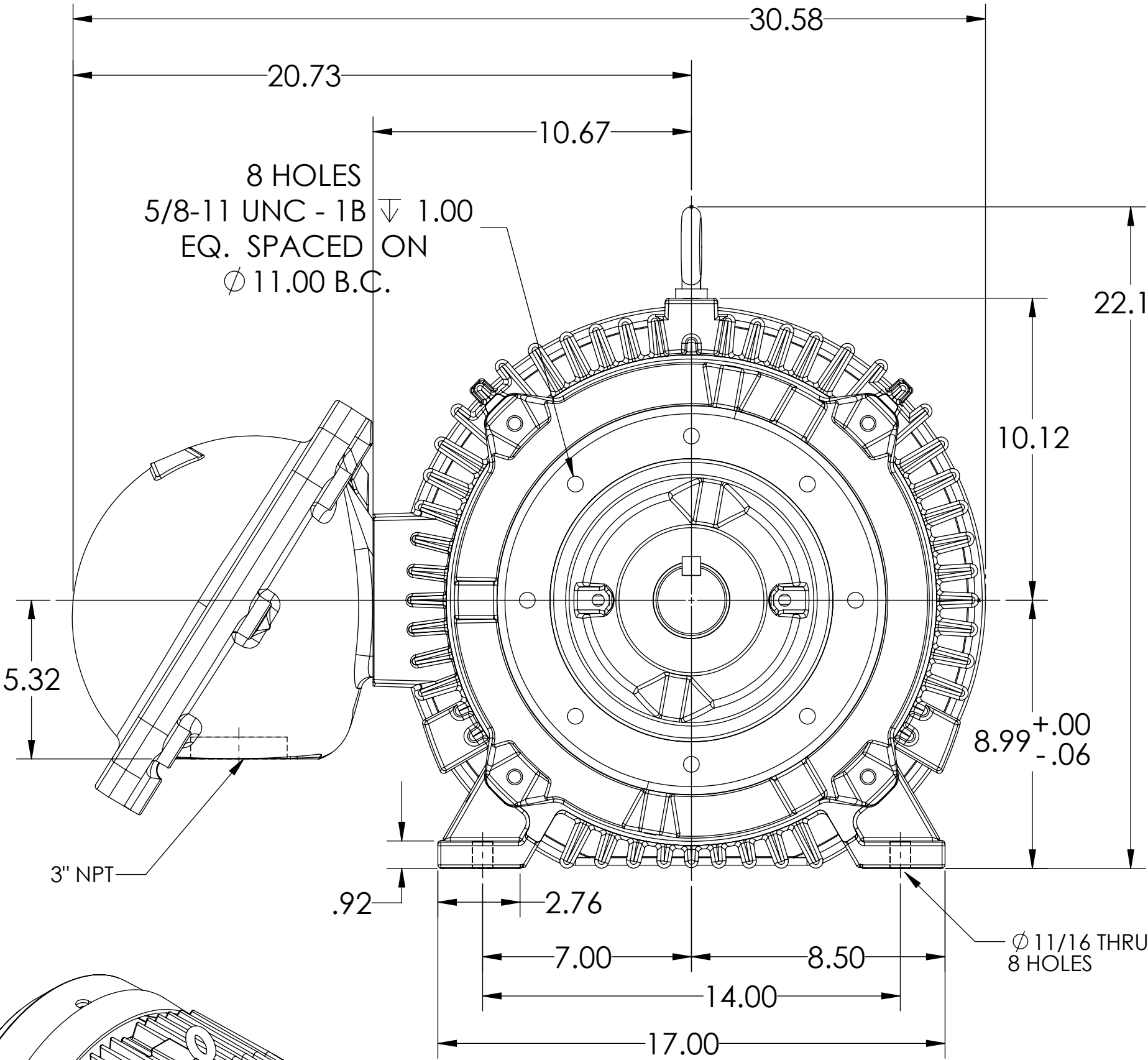
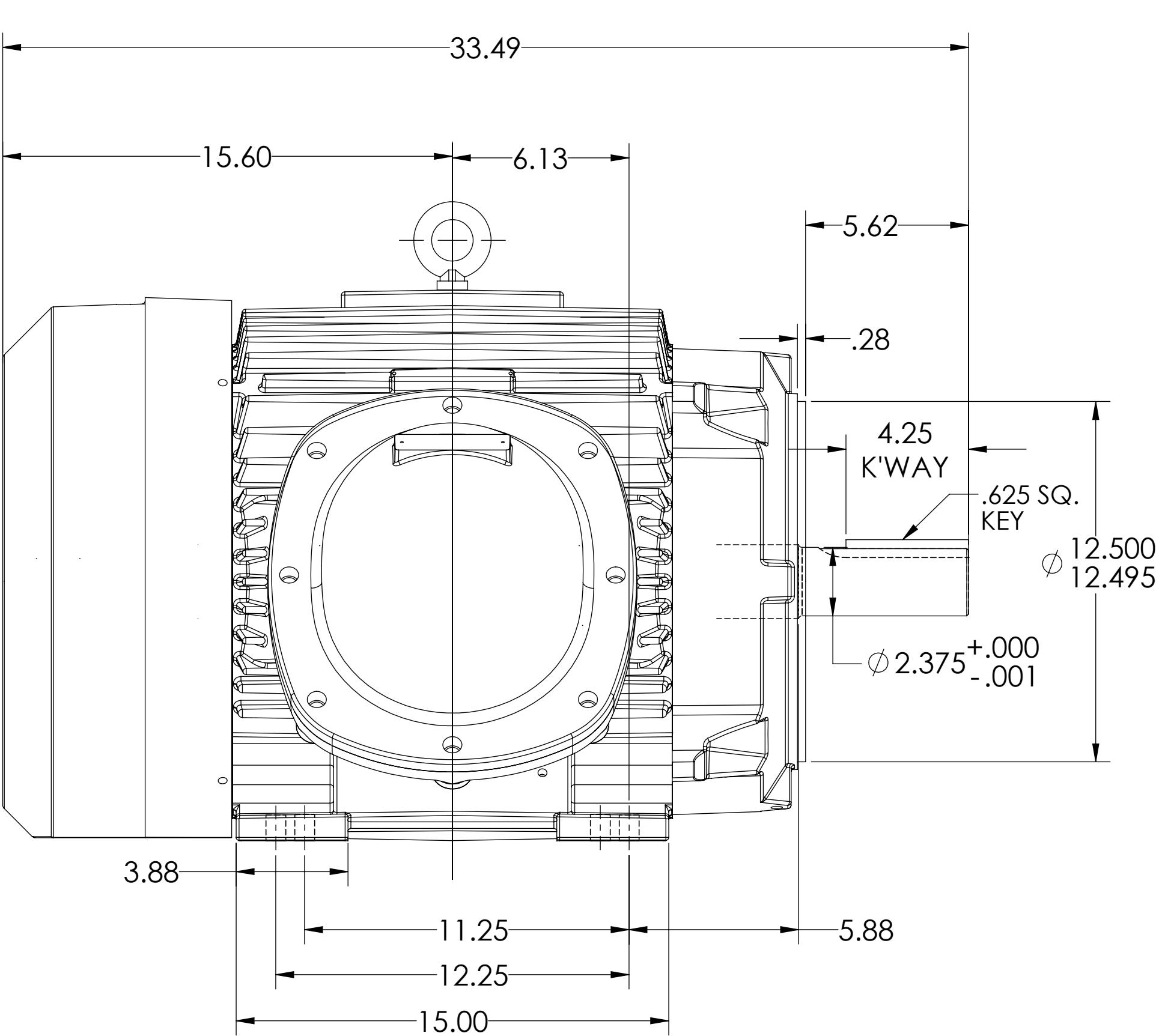
SQUIRREL-CAGE INDUCTION

ENCLOSURE: TOTALLY ENCLOSED

FRAME 365TC  
INCLUDES 364TC FRAME MOUNTING HOLES

COOLING: FAN-COOLED

MOUNTING: FOOT



DIMENSIONS ARE IN INCHES

CUSTOMER IS RESPONSIBLE FOR DETERMINING THAT MOTOR PERFORMANCE IS SUITABLE IN THE APPLICATION.

SHEET NUMBER  
1 OF 1

70512-502

IF MOUNTING CLEARANCE DETAILS ARE REQUIRED, CONSULT FACTORY.  
MAXIMUM PERMISSIBLE SHAFT RUNOUT WHEN MEASURED AT END OF  
STANDARD SHAFT EXTENSION IS .003" T.I.R.

REV. DESC: CHANGE SHAFT TIR FROM .001 TO .003 SEE TDR			
REV: B	VERSION: 02	REVISED: 11:50:49 12/27/2017	TDR: 000001055491
MODEL NO. 616512-502			
BY: RAGGDM		C	

**BALDOR**

E365TC 6313 FCXP W/BOLT ON CONDUIT BOX -- CLASS 1 GR C & D

616512-502