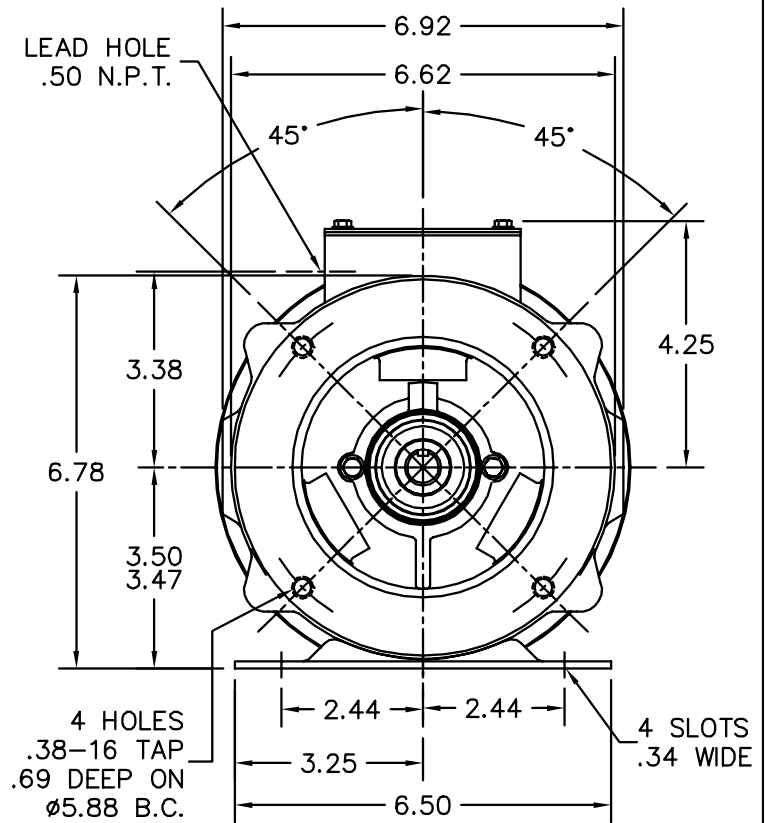
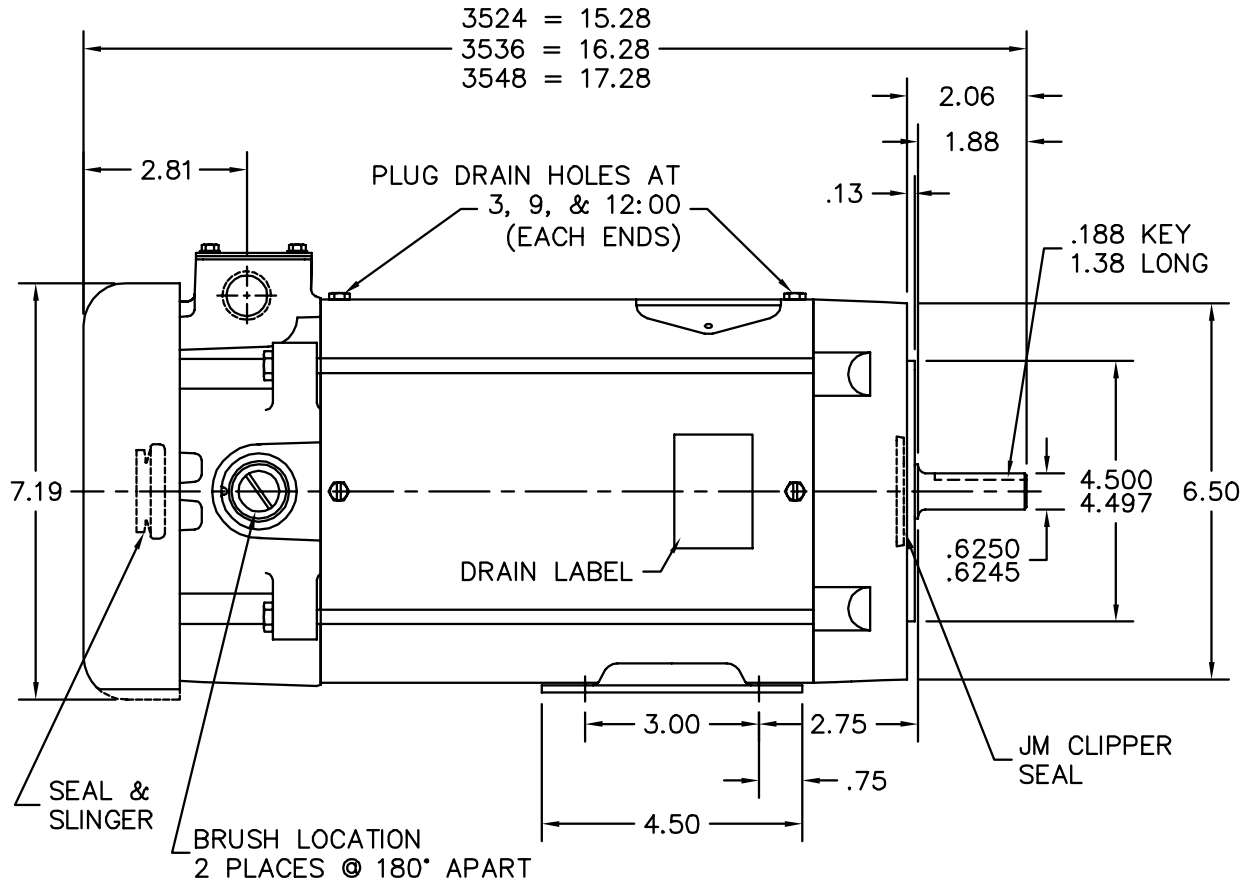
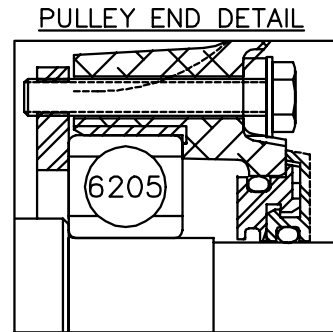
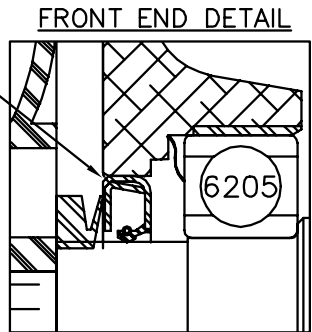


35LYP634



APPLY COAT OF SEALER TO HOUSING BEFORE PRESSING IN SEAL



CUSTOMER IS RESPONSIBLE FOR DETERMINING THAT BALDOR'S PRODUCT WILL PERFORM SUITABLY IN THE INTENDED APPLICATION.

| | | |
|---|------------------------------|-------------------|
| REV. DESC: MOVE SLINGER/SEAL TO PROPER PLACE, ADD SEALER NOTE | | |
| REV. LTR: F | VERSION: 03 | TDR: 000001063500 |
| FILE: \AAA\00043\269 | REVISED: 01:38:34 03/08/2018 | BY: ENFRAJO |
| MTL: - | | |

BALDOR

STD HORZ 35PM TEFC NEMA 56C WD PAINT FREE (S/P 9-2)

SH 1 of 1

35LYP634