

INDUSTRIAL DIRECT CURRENT MOTORS AND GENERATORS - RPM III

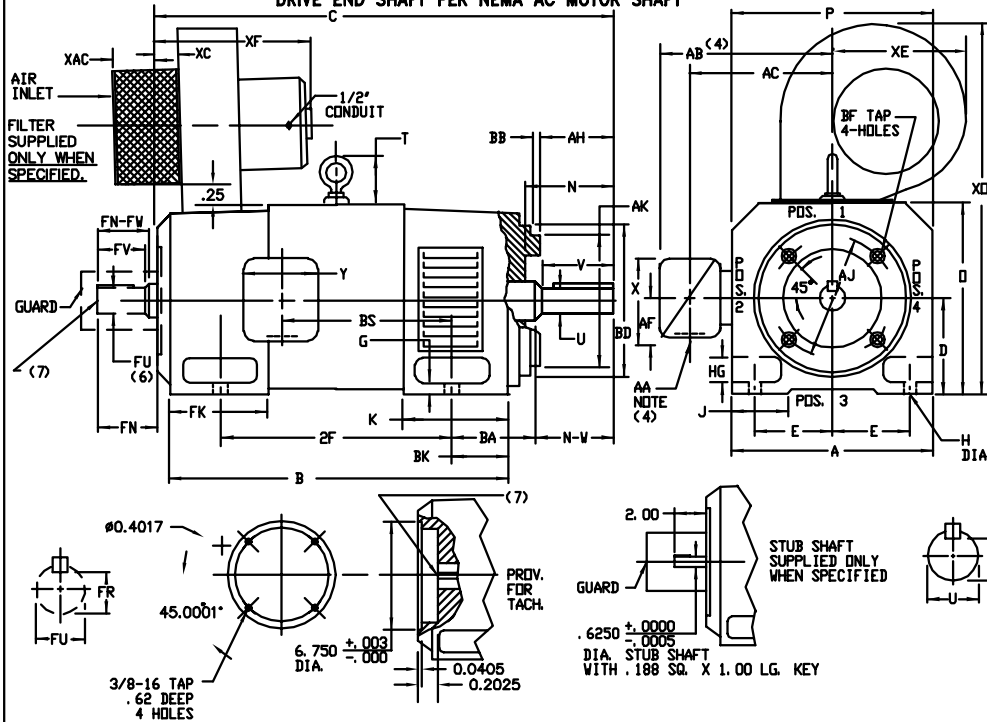
ENCLOSURE: DRIP-PROOF FULLY-GUARDED,
SPLASHPROOF
MOUNTING: FOOT, NEMA "C" FACE

COOLING: FORCE VENTILATED
WITH INTEGRAL
BLOWER AND MOTOR

METHOD OF DRIVE: COUPLED OR BELTED

ACCESSORIES: PROVISIONS FOR
TACHOMETER MOUNTING
ONLY WHEN SPECIFIED

FRAMES SC2113ATCZ THRU LC2115ATCZ
DRIVE END SHAFT PER NEMA AC MOTOR SHAFT



DIMENSIONS ARE IN INCHES

FRAME	A	D(1)	E	G	H	HG	J	O	P	T	BA	K	FK	BK
SC2113ATCZ-LC2115ATCZ	10.25	5.25	4.25	.44	.44	1.38	1.75	10.44	10.31	2.08	3.50	5.19	6.81	2.38

FRAME	C(8)	B	BS	DRIVE END SHAFT AND KEY								OPPOSITE DRIVE END SHAFT AND KEY(6)						WT.		
				2F	N	N-W	U(2)	AH	V	R(3)	SQ.	LGTH.	FN	FN-FW	FU(2)	FV	FR(3)		SQ.	LGTH.
SC2113ATCZ	28.00	22.50	11.38	18.00	3.62	3.38	1.3750	3.12	3.12	1.201	.312	2.38	3.50	3.25	1.625	3.00	1.416	.375	2.25	355
MC2113ATCZ	29.25	23.75	12.62	18.00	3.62	3.38	1.3750	3.12	3.12	1.201	.312	2.38	3.50	3.25	1.625	3.00	1.416	.375	2.25	380
LC2113ATCZ	30.88	25.38	14.25	18.00	3.62	3.38	1.3750	3.12	3.12	1.201	.312	2.38	3.50	3.25	1.625	3.00	1.416	.375	2.25	410
MC2115ATCZ	32.12	26.62	15.50	22.00	3.62	3.38	1.3750	3.12	3.12	1.201	.312	2.38	3.50	3.25	1.625	3.00	1.416	.375	2.25	435
LC2115ATCZ	34.88	29.38	18.25	22.00	3.62	3.38	1.3750	3.12	3.12	1.201	.312	2.38	3.50	3.25	1.625	3.00	1.416	.375	2.25	490

FRAME	BB	BD	BF TAP	BF TAP DEPTH	AJ	AK(5)
SC2113ATCZ-LC2115ATCZ	1.25	8.75	1/2-13	.75	7.25	8.500

FRAME	XAC	XC	XE	XF	XO
SC2113ATCZ-LC2115ATCZ	7.75	2.25	10.00	16.00	22.75

- (1) "D" DIMENSION WILL NOT BE EXCEEDED. SHIMS UP TO .03 INCHES IN THICKNESS ARE USUALLY REQUIRED FOR COUPLED OR GEARED MACHINES.
 - (2) "U" AND "FU" VARY +.000 - .0005 UP TO 1.625 DIA +.000 -.001 1.625 DIA AND LARGER
 - (3) "R" AND "FR" VARY +.000 - .015
 - (4) TERMINAL BOX VARIES WITH H.P. FOR DIMENSIONS "AA", "AB", "AC", "AF", "X" AND "Y", REFER TO BOX D/S. (STD. 609959-1, "X/P" 609959-2, MILL 609959-3)
 - (5) "AK" VARIES +.000, -.003---FACE ROUNDOFF AND ECCENTRICITY .004 MAX T. I. R.
 - (6) OPPOSITE DRIVE END SHAFT SUPPLIED ONLY WHEN SPECIFIED.
 - (7) MOTOR SHAFT TAPPED FOR SCREW-IN STUB SHAFT.
 - (8) WHEN THE MOTOR APPLICATION DOES NOT REQUIRE THE USE OF DPP, DRIVE END, ADD .25 TO "C" DIM. FOR BRACKET COVER.
- TERMINAL BOX CAN BE ROTATED FOR LEAD OUTLET AT TOP, SIDES OR BOTTOM.
TERMINAL BOX LOCATED ON OPPOSITE SIDE WHEN F-2, U-1, U-4, V-5, U-7, OR C-1 MOUNTING IS SPECIFIED. BOX LOCATED ON TOP WHEN SPECIFIED.
BLOWER ASSEMBLY CAN BE LOCATED AT POSITIONS 1, 2, OR 4, EXCEPT BLOWER ASSEMBLY AND TERMINAL BOX CAN NOT BE LOCATED AT THE SAME POSITION.
MOTOR WEIGHT MAY VARY 15% FOR NON-STANDARD RATINGS AND/OR ACCESSORIES.
IF MOUNTING CLEARANCE DETAILS ARE REQUIRED, CONSULT FACTORY.

CUSTOMER IS RESPONSIBLE FOR DETERMINING THAT BALDOR'S PRODUCT WILL PERFORM SUITABLY IN THE INTENDED APPLICATION.

REV. DESC: LOADED TO BUS	VERSION: 00	TDR: 000000578087
REV. LTR: -	REVISED: 08:48:01 01/28/2011	BY: CONNAS
FILE: \RGG\00015\950		
MTL: -		

BALDOR

DIMENSION DRAWING, SC2113ATCZ - LC2115ATCZ, DPP, FOOT MTG

SH 1 of 1