

# Catalog

■ KS-Mini

P1-P2

■ KS-Normal

P3-P4

■ KS-Seagull

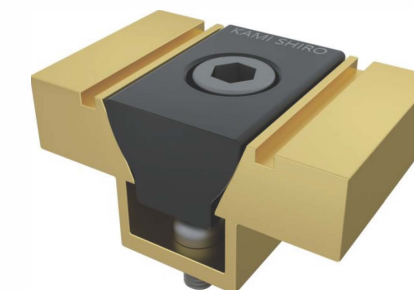
P5-P6

■ KS-OKVise

P7-P8



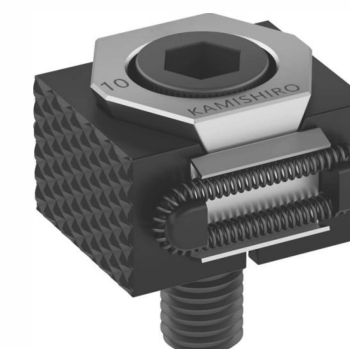
KS-Mini



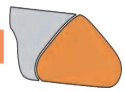
KS-Normal



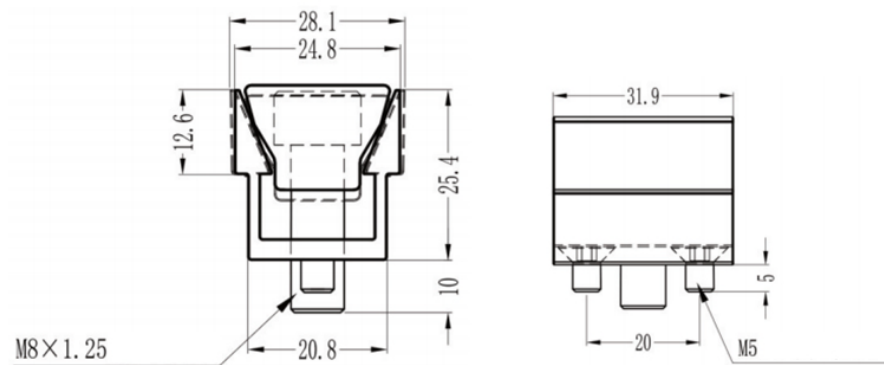
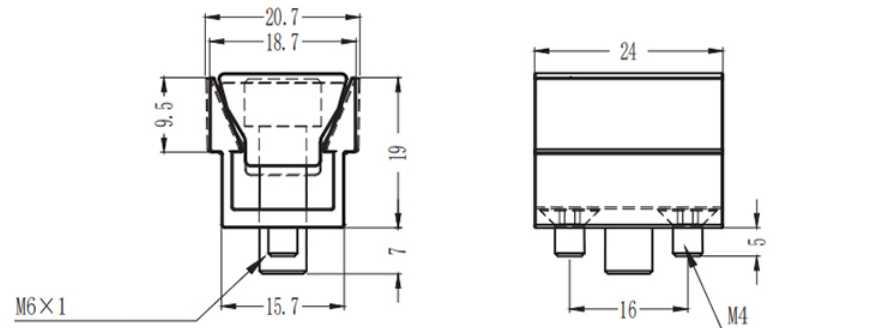
KS-Seagull



KS-OKVise



# KS-Mini



- ### Advantage
- Support Pneumatic Installation
  - Easy to Install
  - High Reliability
  - No pinch marks

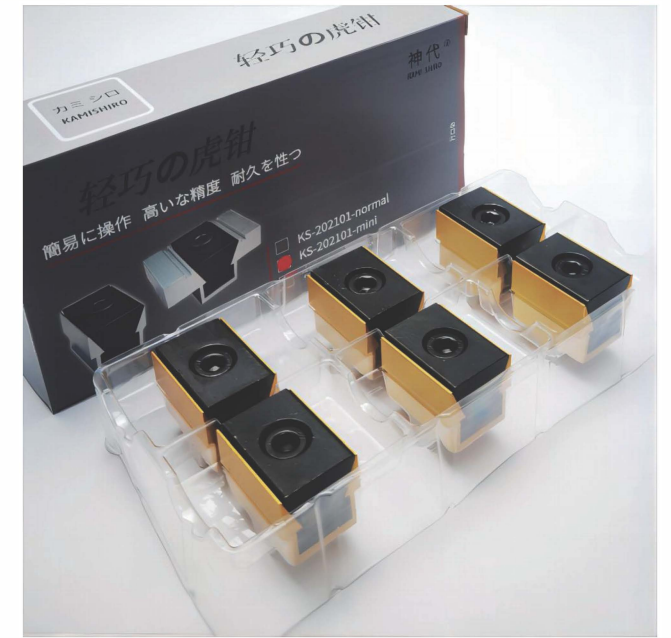
- ### Features
- Suitable for mass production
  - Plane two-way fixed clamping
  - Single product processing
  - High efficiency processing

Model	Material	Pressing force of jaws (KN)	Tightening torque (Nm)	weight in g approx.	hardness of jaws HB
KS-mini-M6	SUM22, aluminum alloy	6.6	14.3	36	95
KS-mini-M8	SUM22, aluminum alloy	8.8	14.5	85	95

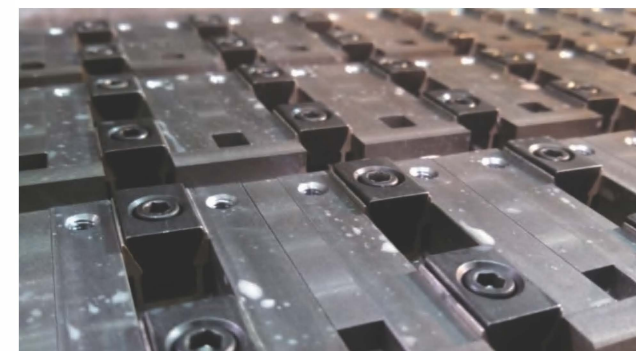
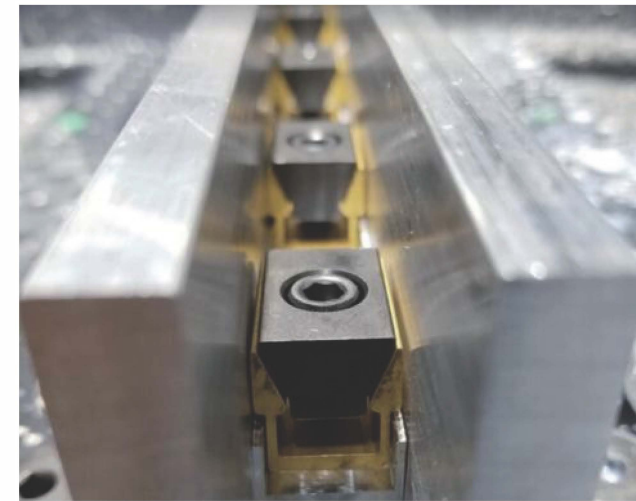
# KS-Mini



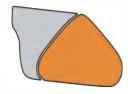
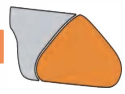
KS-Mini-M6



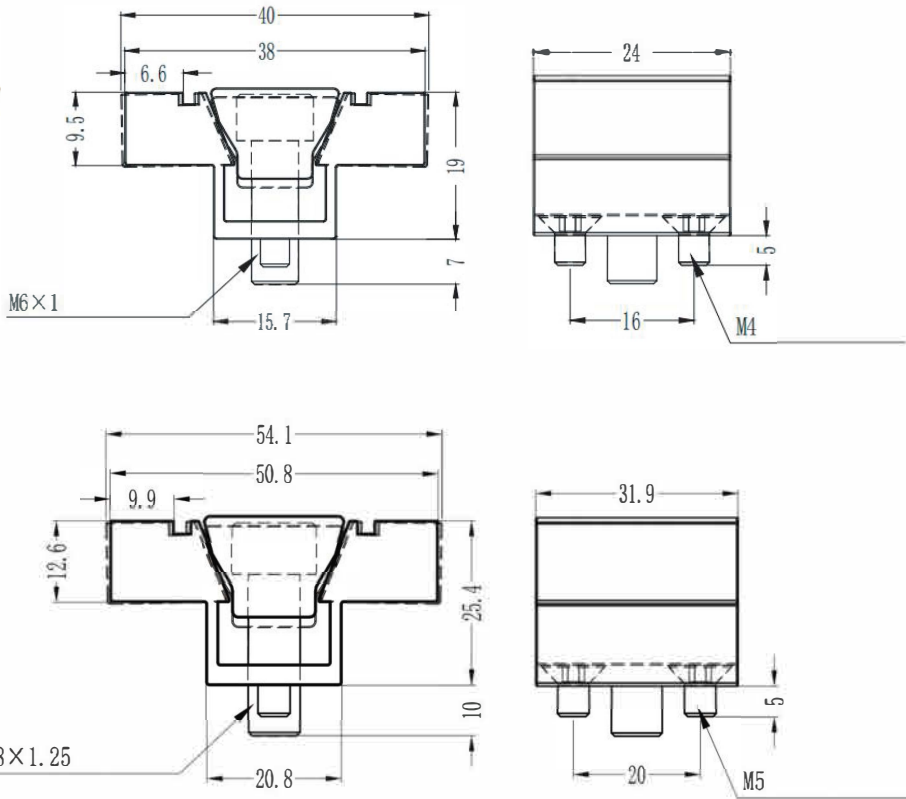
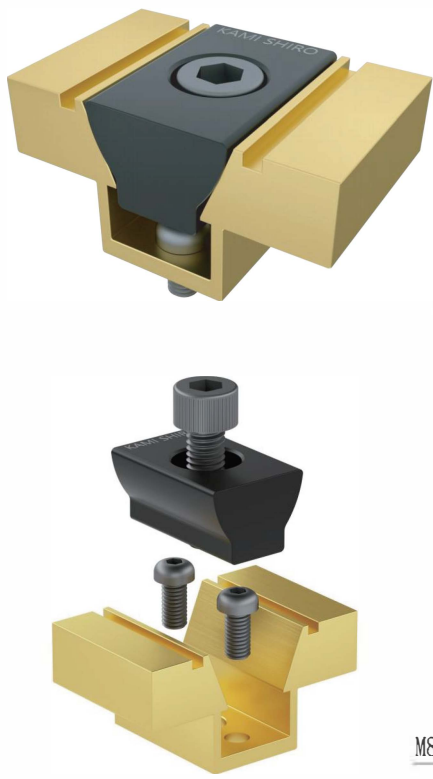
KS-Mini-M8



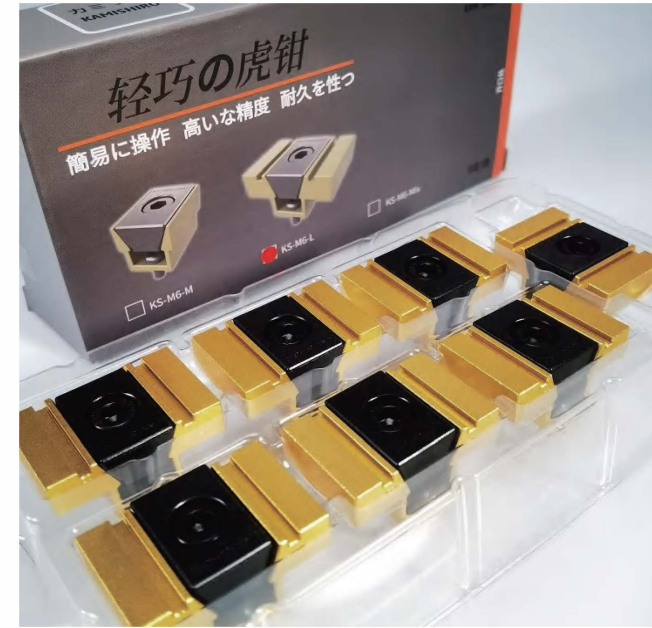




# KS-NORMAL



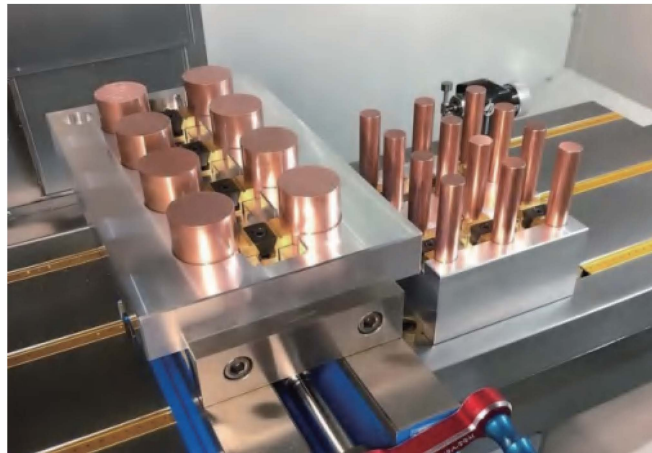
# KS-NORMAL



KS01-normal-M6



KS01-normal-M8



## Advantage

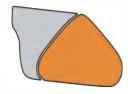
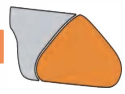
- Support Pneumatic Installation
- Easy to Install
- High Reliability
- No pinch marks

## Features

- Suitable for mass production
- Plane two-way fixed clamping
- Single product processing
- High efficiency processing

Model	Material	Pressing force of jaws (KN)	Tightening torque (Nm)	weight in g approx.	hardness of jaws HB
KS-Normal-M6	SUM22, aluminum alloy	6.6	14.3	47	95
KS-Normal-M8	SUM22, aluminum alloy	8.8	14.5	115	95

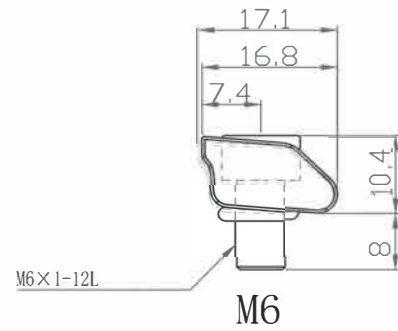
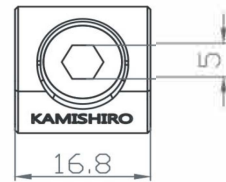




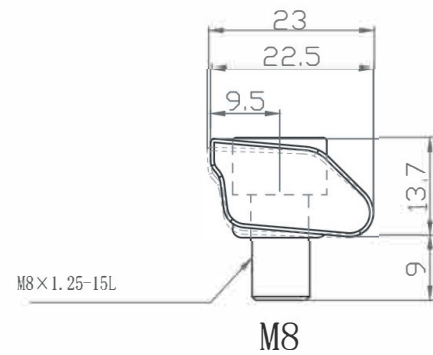
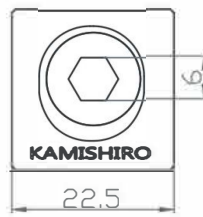
# KS-Seagull



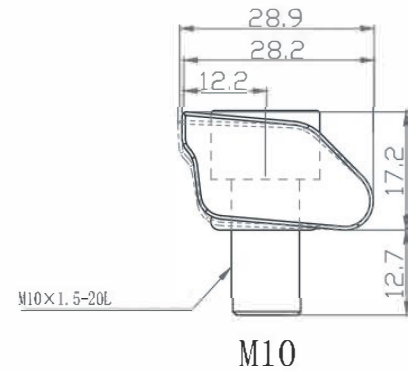
## M6



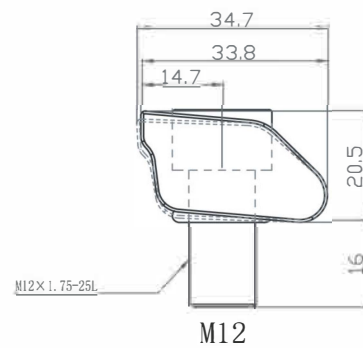
## M8



## M10



## M12



- ### Features
- Suitable for mass production
  - Plane two-way fixed clamping
  - Single Product processing
  - High Efficiency Processing

# KS-Seagull

Model	Material	Pressing force of jaws (KN)	Tightening torque (Nm)	weight in g approx.	hardness of jaws HRC	Package
KS-Seagull-M6	440C	9.5	12	11	48-52	carton
KS-Seagull-M8	440C	16.5	33.8	29	48-52	carton
KS-Seagull-M10	440C	18	40.6	48	48-52	carton
KS-Seagull-M12	440C	50	145	114	48-52	carton



KS-Seagull-M6



KS01-Seagull-M8

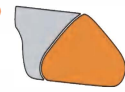
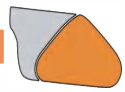


KS01-Seagull-M10



KS01-Seagull-M12



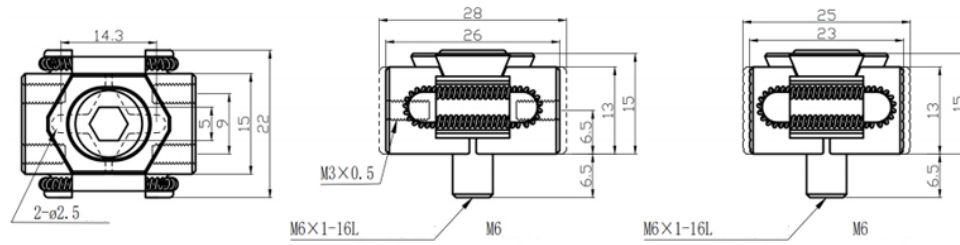


### KS-OK Vise

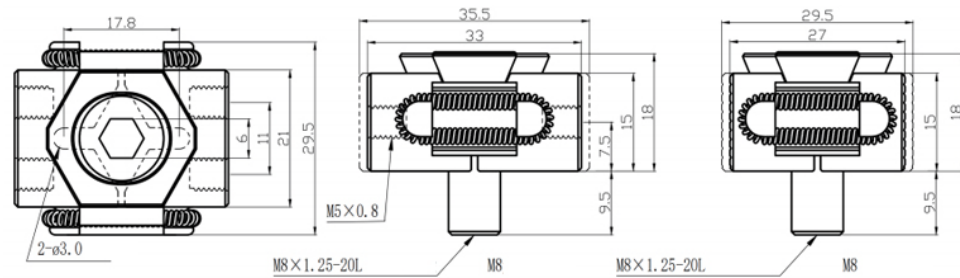
#### OKC



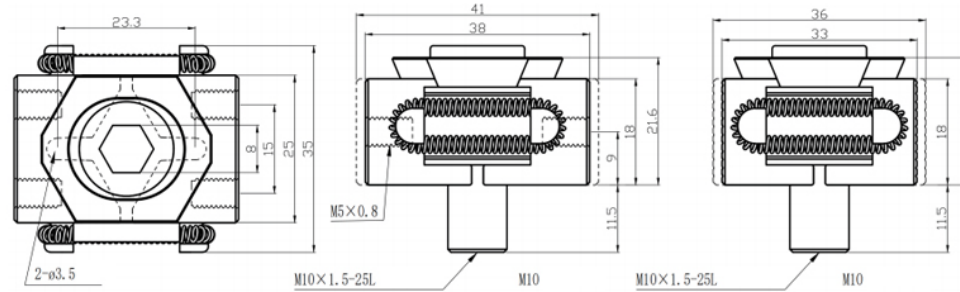
#### OKVise-M6



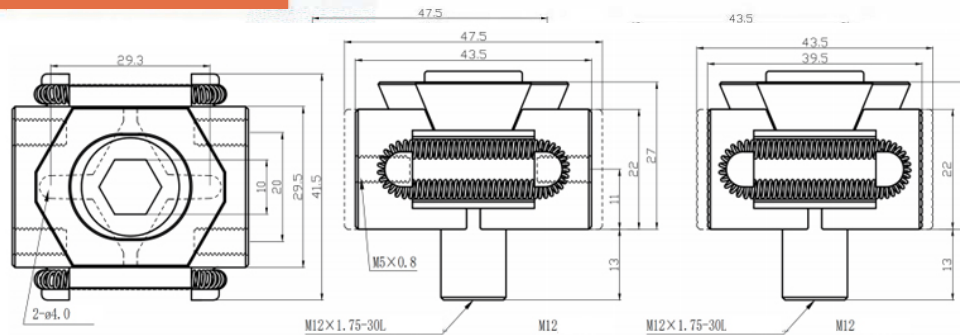
#### OKVise-M8



#### OKVise-M10



#### OKVise-M12



### Features

- Suitable for mass production
- Plane two-way fixed clamping
- Single Product processing
- High Efficiency Processing
- High Reliability

### KS-OK Vise

Model	Material	Pressing force of jaws (KN)	Tightening torque (Nm)	weight in g approx.	hardness of jaws HRC	Package
OKP06/OKC06	440C	6.8	12	40/36	45	carton
OKP08/OKC08	440C	16	25	83/71	45	carton
OKP10/OKC10	440C	20	54	137/122	45	carton
OKP12/OKC12	440C	25	89	227/208	45	carton

