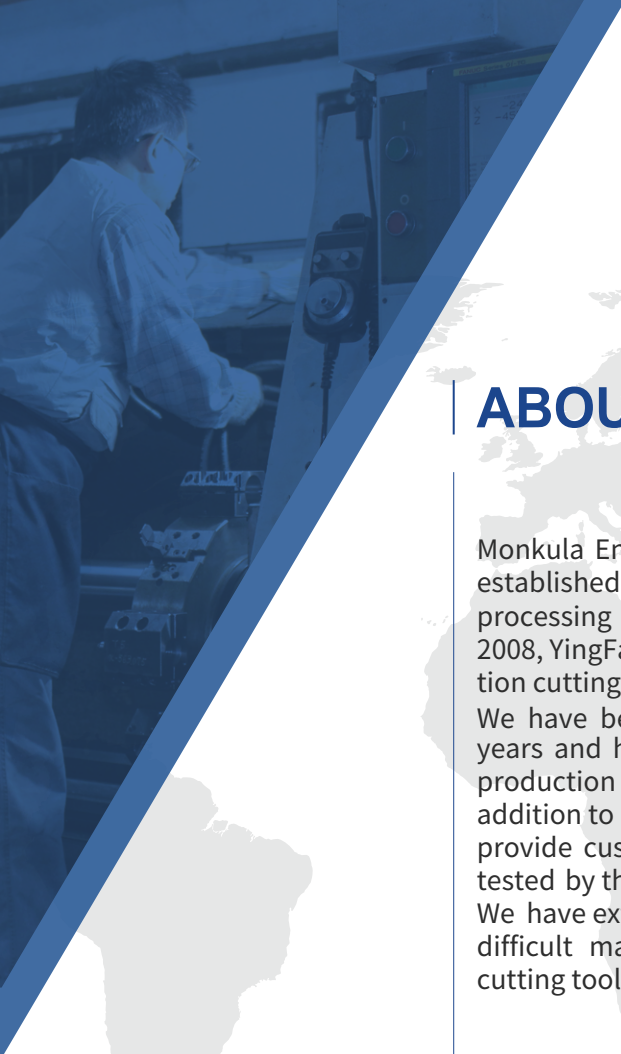


LIVETOOLS®

Machine Tool People.
www.livetools.com.au



Anti Vibration Cutting Tools & Boring Bars



ABOUT MONKULA

Monkula Enterprise Co., Ltd. original name was YingFan Enterprise Co., Ltd., established in 2001, as a professional valve and mechanical hardware parts processing plant, customers are mainly end-users in Germany and Japan. In 2008, YingFan Enterprise Co., Ltd transformed and began to develop anti-vibration cutting tools and changed company name to Monkula Enterprise Co., Ltd. We have been manufacturing anti-vibration cutting tools for more than 14 years and have been sold in more than 30 countries around the world. The production line has CNC lathe, 5-axis CNC machine, CNC giant lathe. In addition to the standard specifications of anti-vibration cutting tools, we also provide customized tooling services. Besides, product performance is also tested by the Precision Machinery Research and Development Center (PMC). We have extensive machining experience to assist our customers in solving difficult machining problems. The application range of the anti-vibration cutting tools includes: lathe, milling machine, boring and grinding machine.

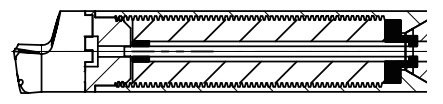


Inventiopatent

Damper system principle action force and reaction force & frequency counteraction

The damper system is threaded design and can increase the contact area with the tool. When the tool is cutting, the damper system counteracts the vibration frequency generated by the tool. When the tool diameter is different, the vibration frequency will be different. The smaller the tool diameter, the higher the vibration frequency, the larger the tool diameter and the lower the vibration frequency.

Structure of Damper System

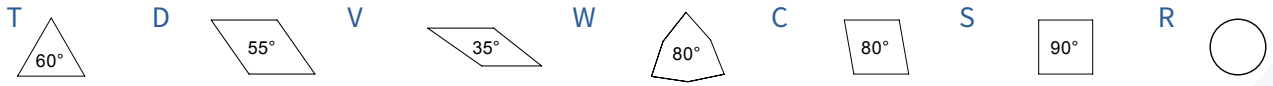


CONTENT

01	Removable Cutting Head Turning Tool	/ P 5
02	Anti-Vibration Cutting Sleeve with Coolant System	/ P 6
03	FI Anti-Vibration Turning Tool With Coolant Hole-Super Toughness	/ P 7
04	CP Removable Type Anti-Vibration Boring Bar	/ P 8
05	Removable Type CI Anti-Vibration Boring Bar	/ P 9
06	Chatter off type Anti-Vibration Cutter	/ P10 - P13
07	M3S Anti-Vibration Boring Bar	/ P 14- P18
08	MR3S Anti-Vibration Boring Bar	/ P 19
09	Removable Type Anti-Vibration Boring Bar	/ P 20
10	TSC Removable Type Anti-Vibration Boring Bar	/ P 21- P22
11	Giant Anti-Vibration Boring Bar	/ P 23
12	Removable Cutting Head	/ P 24- P36
13	Combination Type Anti-Vibration Boring Bar	/ P 37- P 38
14	Y-Type(Anti-Vibration) External Turning Tool (With Cool Hole)	/ P39-- P 45
15	Custom-Made Product	/ P 46

INSERT SELECTION

1 Insert shape selection:



2 Entering angle selection: F 91° > U 93° > Q 107°

3 Clearance angle of Insert selection: P 11° > C 7° > B 5° > N 0°

4 Insert corner radius selection: 0.4mm > 0.2mm > 0.8mm

// Insert corner radius 0.4mm: Less cutting resistance, there is less tendency for vibration.

// Insert corner radius 0.2mm: It is recommended for high L/D and suitable for light cutting.

// Insert corner radius 0.8mm: Larger cutting resistance, there is higher tendency for vibration. It is recommended for low L/D (3D-5D) and suitable for roughing.

- It is not recommended to use Insert corner radius more than 0.8mm.

MACHINING CONDITION

1 Cutting speed (Vc : m/min)

// It is recommended to be consistent with the machining conditions of the insert.

// Below Vc 80 m/min will cause the insert wear and vibration.

- In-plant test Vc 80m/min ~ Vc 300m/min works better.

2 Feed speed(F : mm/rev)

// The roughing feed is between 0.2 mm/rev and 0.3 mm/rev.

// If the finishing feed is less than 0.1mm/rev, the cutting speed must be increased to more than Vc 160 m/min to obtain a better cutting surface.

CLAMP



1 It is recommended to use Anti-Vibration Cutting Sleeve to clamp the cutting tools.

2 Since anti-vibration cutting sleeve completely encases the bar, not cylindrical sleeve with screws, therefore, it is more stable and will not damage the damper system.

Removable Cutting Head Turning Tool

Invention Patent I606877



Material : SNCM439 (Alloy Steel)

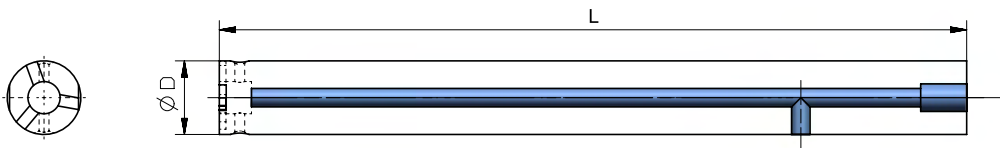
Hardness: HRC 42°

Material : SCM440(Alloy Steel)

Hardness: HRC 42°

Features

01. The cutter heads are high-pressure chip breaking coolant spray design, which is conducive to chip breaking.
02. Patented side coolant inlet, the cutter holder does not need a back cover and does not a coolant pipe. Not only can directly guide the coolant out of the center, but also can stretch to a limited length without cutting.



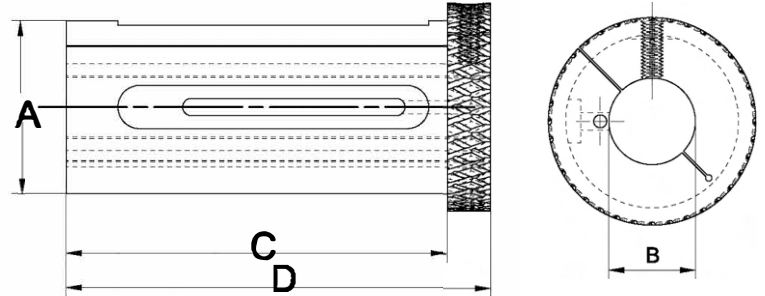
Order No.	ØD (mm)	L (mm)	Removable Cutting Head	Screw ⌚	Wrench ⌚
A16-123	16	123	CP1-16-S/Y/P-Type	M4	2
A18-128	18	128	CP1-1-18-S/Y/P-Type		
A20-131	20	131	CP2-20-S/Y/P-Type		
A25-142.5	25	142.5	CP3-25-S/Y/P-Type	M6	3
A32-156	32	156	CP4-32-S/Y/P-Type		
A40-176.5	40	176.5	CP5-40-S/Y/P-Type		

Customized tool diameter and length are available.

Anti-Vibration Cutting Sleeve with Coolant System

Invention Patent I606877

Material: SCM415 (Alloy Steel)
Hardness: HRC 58°



Features

- 01. C-type completely encases the bar, stable clamping and improve anti-vibration effect.
- 02. Can reduce insert consumption and increase cutting speed and productivity.
- 03. Not easily deformed, easy to disassemble and assemble from tool holder.
- 04. With side hole inlet turning tools, no need to connect water tube, Also the hole on the front of the sleeve can take off the screw to pass-through the water. Can use for shank without coolant hole.
- 05. Clamping with anti-vibration cutting sleeve prevents the carbide tool from breaking.
- 06. It is not recommended to mill the surface on turning tools to maintain tool completeness and increase strength.

Order No.	A	B	C	D
MK32-S08	32	8	76	86
MK32-S10	32	10	76	86
MK32-S12	32	12	76	86
MK32-S14	32	14	76	86
MK32-S16	32	16	76	86
MK32-S18	32	18	76	86
MK32-S20	32	20	76	86
MK32-S25	32	25	76	86

Order No.	A	B	C	D
MK40-S08	40	8	88	98
MK40-S10	40	10	88	98
MK40-S12	40	12	88	98
MK40-S14	40	14	88	98
MK40-S16	40	16	88	98
MK40-S18	40	18	88	98
MK40-S20	40	20	88	98
MK40-S25	40	25	88	98
MK40-S32	40	32	88	98

Order No.	A	B	C	D
MK50-S08	50	8	102	112
MK50-S10	50	10	102	112
MK50-S12	50	12	102	112
MK50-S14	50	14	102	112
MK50-S16	50	16	102	112
MK50-S18	50	18	102	112
MK50-S20	50	20	102	112
MK50-S25	50	25	102	112
MK50-S32	50	32	102	112
MK50-S40	50	40	102	112



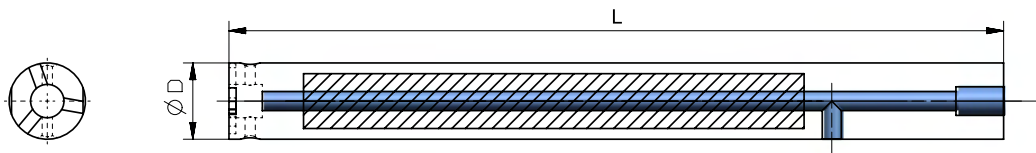
FI Anti-Vibration Turning Tool with Coolant Hole-Super Toughness

Invention Patent I698298

Features



- 01. The increasing rigidity on boring bar is by the tungsten steel, and the toughness of the body can reduce the accidental impact during turning, thereby protecting the boring bar.
- 02. The cutter heads are high-pressure chip breaking coolant spray design, which is conducive to chip breaking.
- 03. Patented side coolant inlet, the cutter holder does not need a back cover and does not need a coolant pipe. Not only can directly guide the coolant out of the center, but also can stretch to a limited length without cutting.
- 04. Because the boring bar will be reaction force by itself when the coolant is discharged under high pressure, the internal tungsten steel can increase stability and be accuracy easier on dimension.



Ratio	Order No.	ØD (mm)	L (mm)	Removable Cutting Head	Screw	Wrench
4D	F-16-157	16	157	CP1-16-S/Y/P-Type	M4	2
	F-18-166	18	166	CP1-1-18-S/Y/P-Type		
	F-20-173	20	173	CP2-20-S/Y/P-Type		
	F-25-195	25	195	CP3-25-S/Y/P-Type	M6	3
	F-32-223	32	223	CP4-32-S/Y/P-Type		
	F-40-260	40	260	CP5-40-S/Y/P-Type		

Customized tool diameter and length are available.

Invention Patent
US8371776 / I419764

Material: SNCM439(Alloy Steel)
Hardness: HRC 42°

Material: SCM440(Alloy Steel)
Hardness: HRC 42°

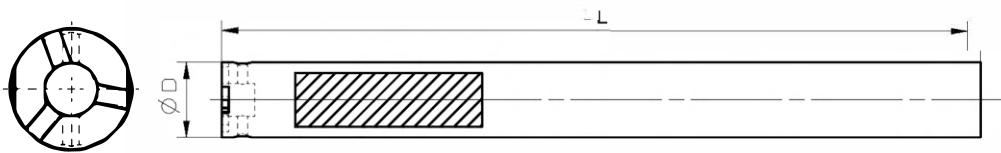


Damper system

Features

01. Suitable for deep hole roughing.

02. Can interchange different cutting heads.



Ratio	Order No.	ØD (mm)	L (mm)	Removable Cutting Head	Screw ⌚	Wrench ↷
5D	CP-16-157	16	157	CP1-16-STUPR/STUCR/SDUCR	M4	2
	CP-18-166	18	166	CP1-1-18-STUPR/STUCR/SDUCR		
	CP-20-173	20	173	CP2-20-STUPR/STUCR/SDUCR		
	CP-25-195	25	195	CP3-25-STUPR/STUCR/SDUCR	M6	3
	CP-32-223	32	223	CP4-32-STUPR/STUCR/SDUCR		
	CP-40-260	40	260	CP5-40-STUPR/STUCR/SDUCR		

Customized tool diameter and length are available.

CI Removable Type CI Anti-Vibration Boring Bar

Invention Patent
I413557 / I419764

Material: SNCM439(Alloy Steel)
Hardness: HRC 42°

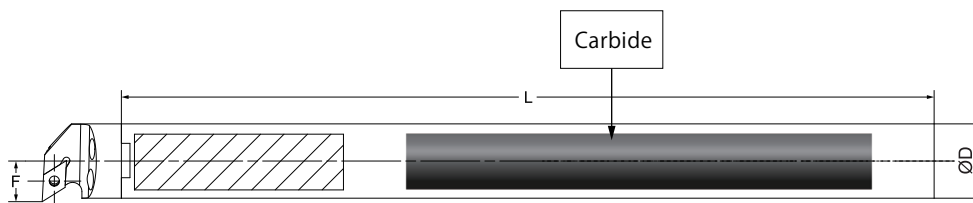
Damper system



Material: SCM440(Alloy Steel)
Hardness: HRC 42°

Features

- 01. C I = Carbide Inside.
- 02. Combining the advantages of Removable Type Anti-Vibration Boring Bar and TSC Removable Type Anti-Vibration Boring Bar.
- 03. Good cutting performance, suitable for roughing and finishing.
- 04. With coolant hole.
- 05. Good stiffness of the tools and good precision in cutting size.
- 06. Increasing tool stiffness, reducing the risk of tool broken when machining.
- 07. Please work with anti-vibration cutting sleeve to have better anti-vibration effect.
- 08. Can interchange different cutting heads.



Ratio	Order No.	ØD (mm)	L (mm)	Overhang (mm)	Removable Cutting Head	Screw	Wrench
7D	M7D-20-235-CI-P	20	235	140	CP2-20-S-Type	M3	2.5
	M7D-25-275-CI-P	25	275	175	CP3-25-S/P-Type	M4	3
	M7D-32-325-CI-P	32	325	224	CP4-32-S/P-Type	M5	4
	M7D-40-385-CI-P	40	385	280	CP5-40-S/P-Type	M6	5
	M7D-50-450-CI-P	50	450	350			
10D	M10D-20-300-CI-P	20	300	200	CP2-20-S-Type	M3	2.5
	M10D-25-350-CI-P	25	350	250	CP3-25-S/P-Type	M4	3
	M10D-32-420-CI-P	32	420	320	CP4-32-S/P-Type	M5	4
	M10D-40-520-CI-P	40	520	400	CP5-40-S/P-Type	M6	5
	M10D-50-668-CI-P	50	668	500			

Chatter off type Anti-Vibration Cutter

Invention Patent
US8371776 / I419764

Material : SCM440(Alloy Steel)

Hardness: HRC 42°

Damper system



Material : SNCM439(Alloy Steel)

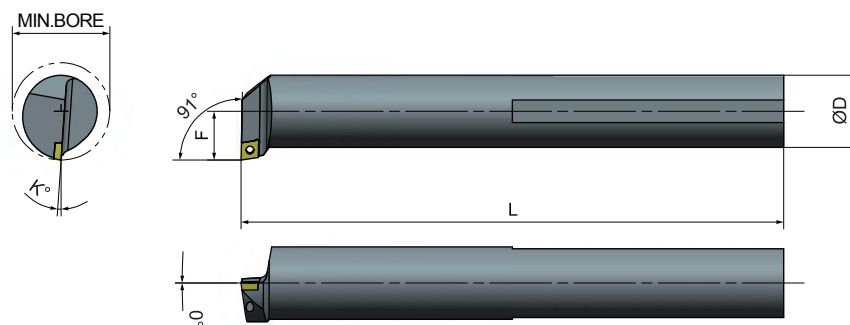
Hardness: HRC 42°

Features

- 01. High machining efficiency, less insert consumption.
- 02. Machining with insert nose radius 0.4mm.
- 03. Suitable for deep hole roughing.

Chatter off type Anti-Vibration Cutter

SCFC

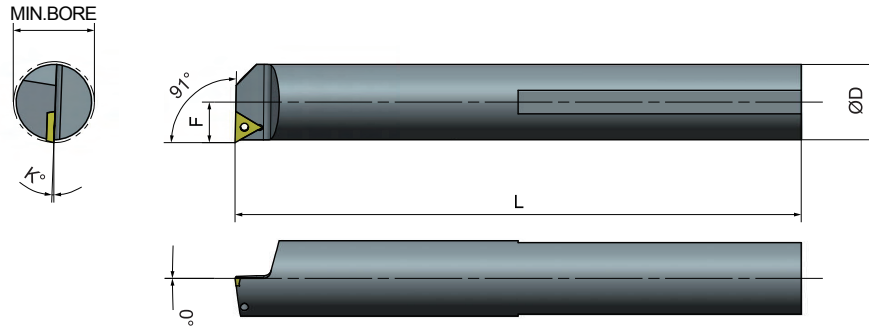


Ratio	Order No.	Insert	Dimensions (mm)					Screw	Wrench
	Right / Left		D	F	K	L	B		
5D	B10X5-SCFCR/L-06	CCMT060204	10	7	12	150	13	M2.5	T8
5-6D	B12X5-SCFCR/L-06		12	9	9	150	16		
	B14X5-SCFCR/L-06		14	9	8	180	17		

Customized tool diameter and length are available.

Chatter off type Anti-Vibration Cutter

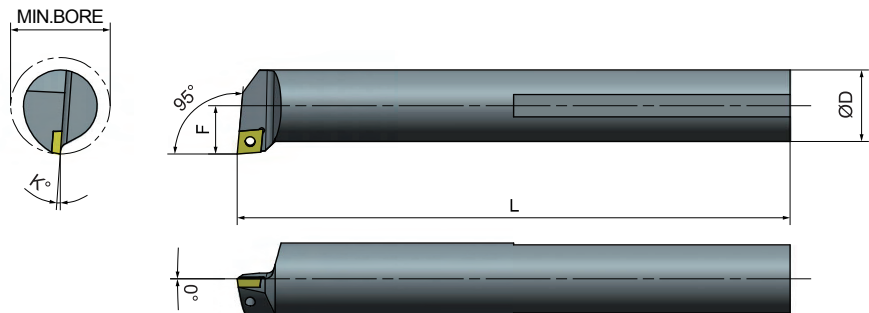
STFC



Ratio	Order No.	Insert	Dimensions (mm)					Screw	Wrench
	Right / Left		D	F	K	L	B		
5D	B10X5-STFCR/L-11	TCMT110204	10	7	15	150	13	M2.5	T8
	B12X5-STFCR/L-11		12	8	10	150	15		
5-6D	B12X5-STFCR/L-11-14		12	7	10	150	14		
	B14X5-STFCR/L-11		14	8	10	180	16		

Customized tool diameter and length are available.

SCLC

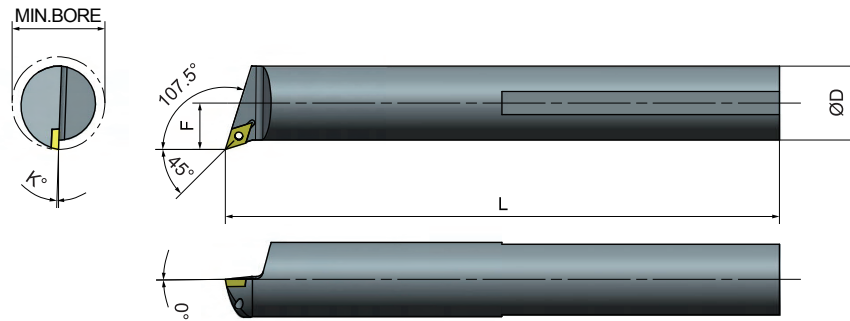


Ratio	Order No.	Insert	Dimensions (mm)					Screw	Wrench
	Right / Left		D	F	K	L	B		
5D	B10X5-SCLCR/L-06	CCMT060204	10	7	12	150	13	M2.5	T8
	B10X5-SCLCR/L-06-12		10	6	12	150	12		
5-6D	B12X5-SCLCR/L-06		12	7	9	150	14		
	B14X5-SCLCR/L-06		14	9	8	180	17		
	B14X5-SCLCR/L-09	14	9	11	180	17			

Customized tool diameter and length are available.

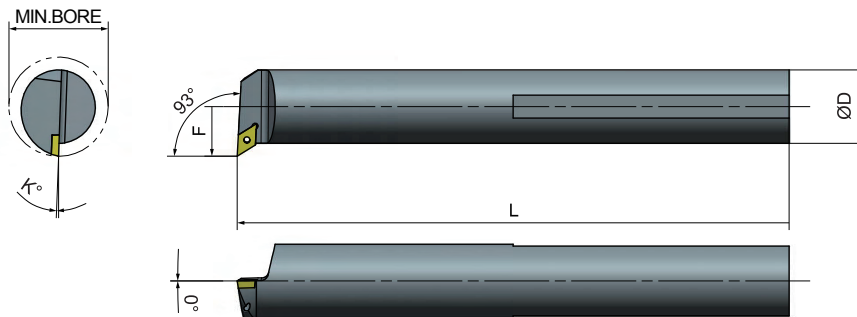
Chatter off type Anti-Vibration Cutter

SDQC



Ratio	Order No.	Insert	Dimensions (mm)					Screw	Wrench
	Right / Left		D	F	K	L	B		
5D	B10X5-SDQCR/L-07	DCMT070204	10	7	10	150	13	M2.5	T8
5-6D	B12X5-SDQCR/L-07		12	9	8	150	16		
	B14X5-SDQCR/L-07		14	9	8	180	17		

SDUC

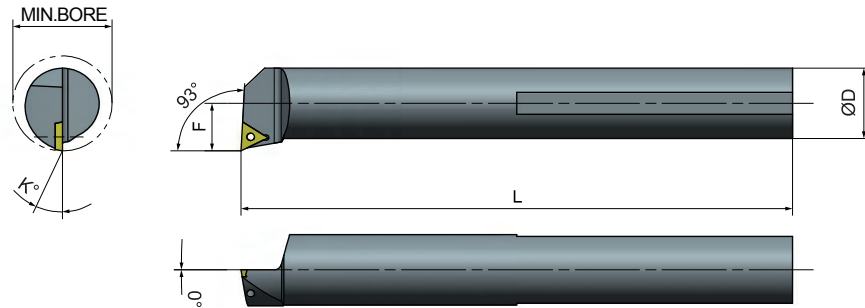


Ratio	Order No.	Insert	Dimensions (mm)					Screw	Wrench
	Right / Left		D	F	K	L	B		
5D	B10X5-SDUCR/L-07	DCMT070204	10	7	10	150	13	M2.5	T8
5-6D	B12X5-SDUCR/L-07		12	9	8	150	16		
	B14X5-SDUCR/L-07		14	9	8	180	17		

Customized tool diameter and length are available.

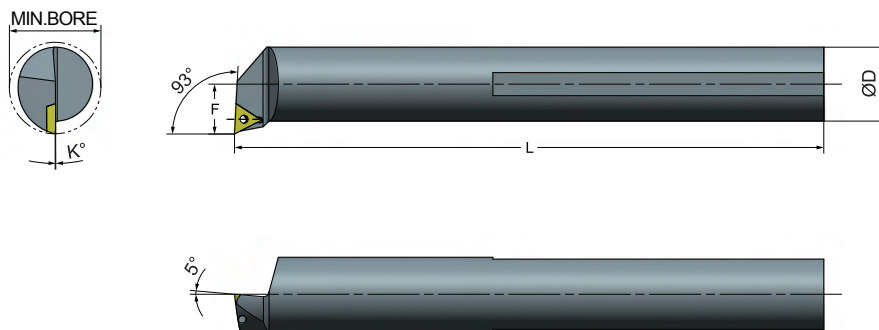
Chatter off type Anti-Vibration Cutter

STUC



Ratio	Order No.	Insert	Dimensions (mm)					Screw	Wrench
	Right / Left		D	F	K	L	B		
5D	B10X5-STUCR/L-09	TCMT090204	10	6	12	150	12	M2.5	T8
	B10X5-STUCR/L-11		10	6	12	150	12		
5-6D	B12X5-STUCR/L-11	TCMT110204	12	7	10	150	14		
	B14X5-STUCR/L-11		14	8	8	180	16		

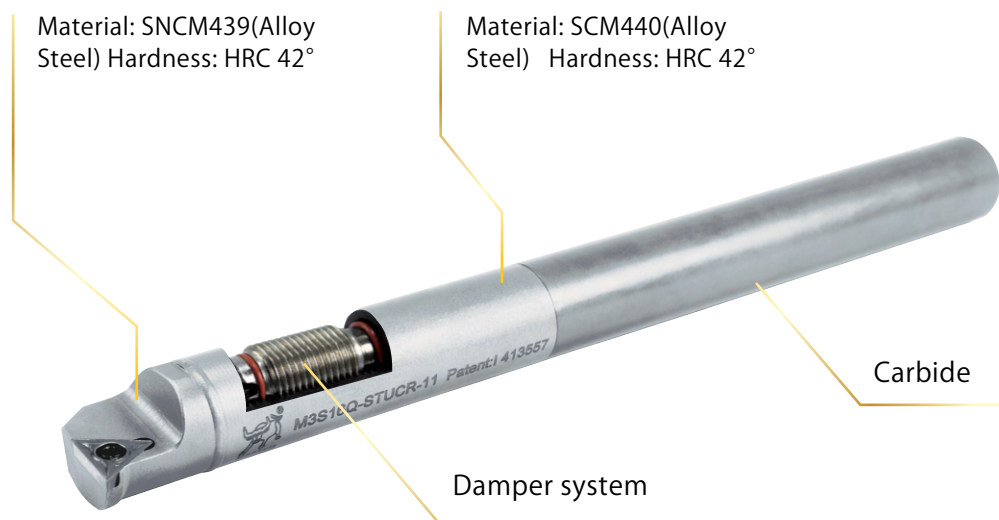
STUP



Ratio	Order No.	Insert	Dimensions (mm)					Screw	Wrench
	Right / Left		D	F	K	L	B		
5D	B10X5-STUPR/L-11	TPMT110304	10	7	8	150	13	M3	T10
5-6D	B12X5-STUPR/L-11		12	8	6	150	15		
	B14X5-STUPR/L-11		14	8.5	8	180	17		

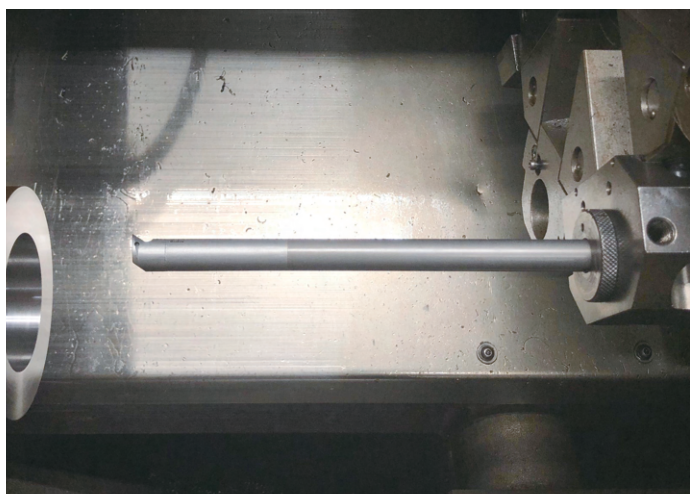
Customized tool diameter and length are available.

Invention Patent
I413557 / I419764



Features

01. Suitable for deep hole finishing.
02. High machining efficiency, less insert consumption.
03. Good stiffness of the tools and good precision in cutting size.
04. Please work with anti-vibration cutting sleeve to have better anti-vibration effect.



Type: M3S16X-SDUCR-07

Insert: DCMT070204

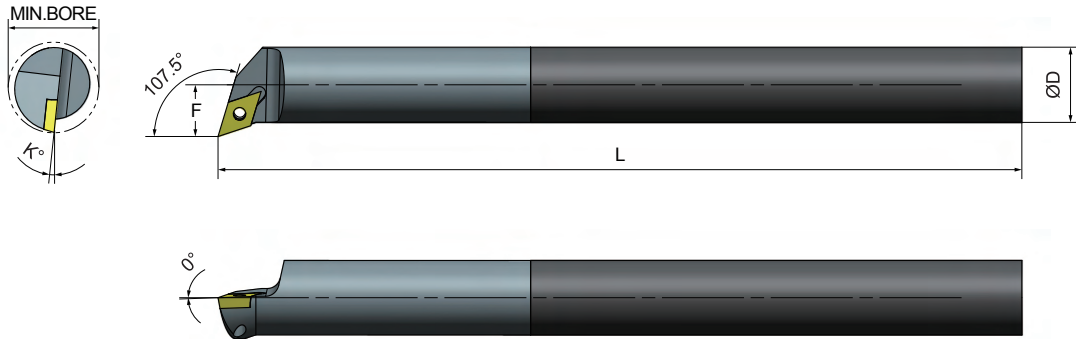
Overhang: 224 mm (14D)

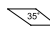


Roughing /	Finishing /
Ap: 0.2mm / rev	Ap: 0.05mm / rev
F: 0.2mm	F: 0.12mm
Vc: 80m / min	Vc: 100m / min

M3S

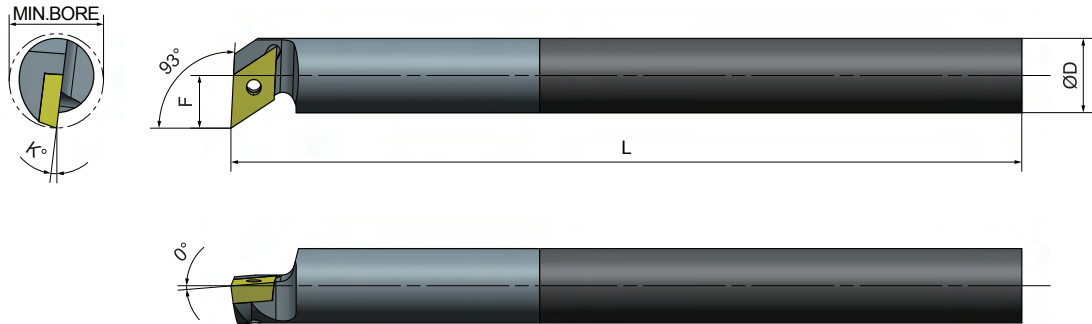
M3S Anti-Vibration Boring Bar

SDQC



Ratio	Order No.	Insert	Dimensions (mm)					Screw	Wrench
	Right / Left		D	F	K	L	B		
6D	M3S8K-SDQCR-07	DCMT070204	10	7	10	125	13	M2.5	T8
	M3S10M-SDQCR-07		10	7	10	150	13		
	M3S12M-SDQCR-07		12	9	8	150	16		
	M3S14Q-SDQCR-07		14	9	8	180	17		
8D	M3S10Q-SDQCR-07	DCMT070204	10	7	10	180	13	M2.5	T8
	M3S12Q-SDQCR-07		12	9	8	180	16		
	M3S14R-SDQCR-07		14	9	8	200	17		
10D	M3S10Q-SDQCR-07	DCMT070204	10	7	10	180	13	M2.5	T8
	M3S12X-SDQCR-07		12	9	8	210	16		
	M3S14X-SDQCR-07		14	9	8	240	17		
12D	M3S14X-SDQCR-07	DCMT070204	14	9	8	270	17	M2.5	T8
14D	M3S14T-SDQCR-07	DCMT070204	14	9	8	270	17	M2.5	T8

Customized tool diameter and length are available.



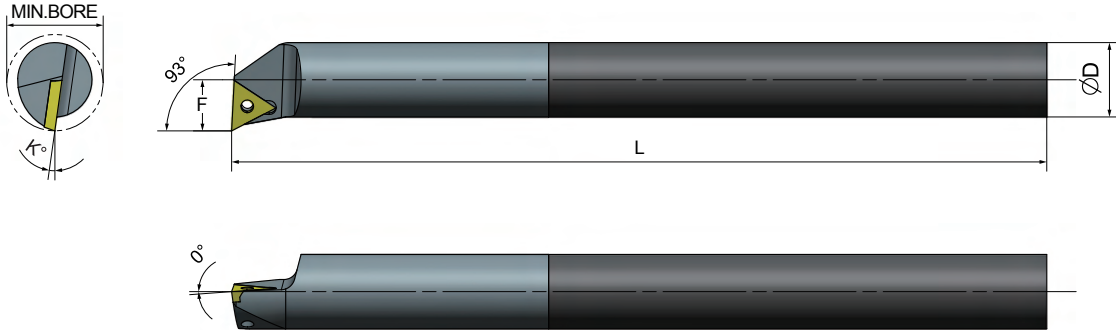
Ratio	Order No.	Insert	Dimensions (mm)					Screw	Wrench
	Right / Left		D	F	K	L	B		
6D	M3S8K-SDUCR-07	DCMT070204	10	7	10	125	13	M2.5	T8
	M3S10M-SDUCR-07		10	7	10	150	13		
	M3S12M-SDUCR-07		12	9	8	150	16		
	M3S14Q-SDUCR-07		14	9	8	180	17		
8D	M3S10Q-SDUCR-07	DCMT070204	10	7	10	180	13	M2.5	T8
	M3S12Q-SDUCR-07		12	9	8	180	16		
	M3S14R-SDUCR-07		14	9	8	200	17		
10D	M3S10Q-SDUCR-07	DCMT070204	10	7	10	180	13	M2.5	T8
	M3S12X-SDUCR-07		12	9	8	210	16		
	M3S14X-SDUCR-07		14	9	8	240	17		
12D	M3S14X-SDUCR-07	DCMT070202	14	9	8	270	17	M2.5	T8
14D	M3S14T-SDUCR-07	DCMT070202	14	9	8	270	17	M2.5	T8

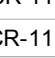




Customized tool diameter and length are available.

M3S

M3S Anti-Vibration Boring Bar

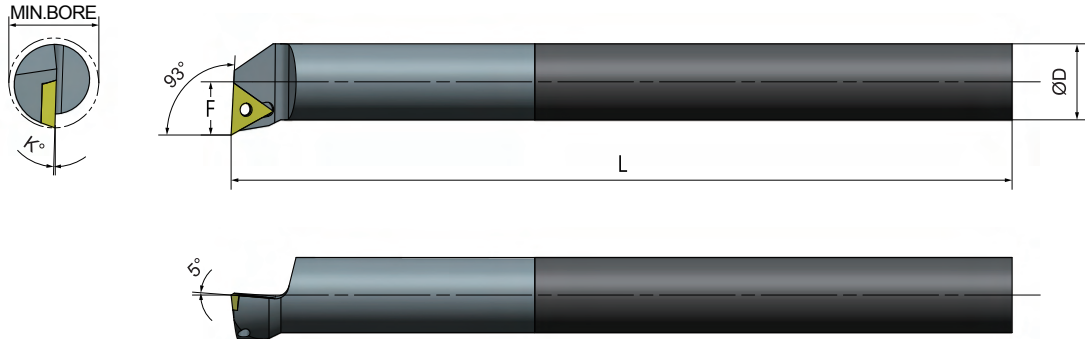
STUC



Ratio	Order No.	Insert	Dimensions (mm)					Screw	Wrench		
	Right / Left		D	F	K	L	B				
6D	M3S8K-STUCR-08	TCMT080204	8	5	10	125	10				
	M3S10M-STUCR-11	TCMT110204	10	6	12	150	12				
	M3S12M-STUCR-11		12	7	10	150	14				
	M3S14Q-STUCR-11		14	8	8	180	16				
M3S10Q-STUCR-11	10		6	12	180	12					
8D	M3S12Q-STUCR-11	TCMT110204	12	7	10	180	14				
	M3S14R-STUCR-11		14	8	8	200	16				
	M3S10R-STUCR-11		10	6	12	200	12				
10D	M3S12X-STUCR-11	TCMT110204	12	7	10	210	14			M2.5	T8
	M3S14X-STUCR-11		14	8	8	240	16				
	M3S14X-STUCR-11		14	8	8	270	16				
12D	M3S14X-STUCR-11	TCMT110204	14	8	8	270	16				
14D	M3S14T-STUCR-11		14	8	8	300	16				

Customized tool diameter and length are available.

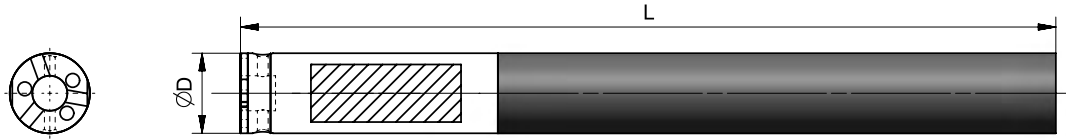
■ STUP



Ratio	Order No.	Insert	Dimensions (mm)					Screw	Wrench
	Right / Left		D	F	K	L	B		
6D	M3S8K-STUPR-08	TPMT080204	8	5	10	125	10	M2.5	T8
	M3S10M-STUPR-11	TPMT110304	10	7	8	150	13		
	M3S12M-STUPR-11		12	8	6	150	15		
	M3S14Q-STUPR-11		14	8.5	8	180	17		
8D	M3S10Q-STUPR-11	TPMT110304	10	7	8	180	13	M3	T10
	M3S12Q-STUPR-11		12	8	6	180	15		
	M3S14R-STUPR-11		14	8.5	8	200	17		
10D	M3S10R-STUPR-11	TPMT110304	10	7	8	200	13	M3	T10
	M3S12X-STUPR-11		12	8	6	210	15		
	M3S14X-STUPR-11		14	8.5	8	240	17		
12D	M3S14X-STUPR-11	TPMT110302	14	8.5	8	270	17	M3	T10
14D	M3S14T-STUPR-11	TPMT110304	14	8.5	8	300	17		

MR3S

MR3S Anti-Vibration Boring Bar

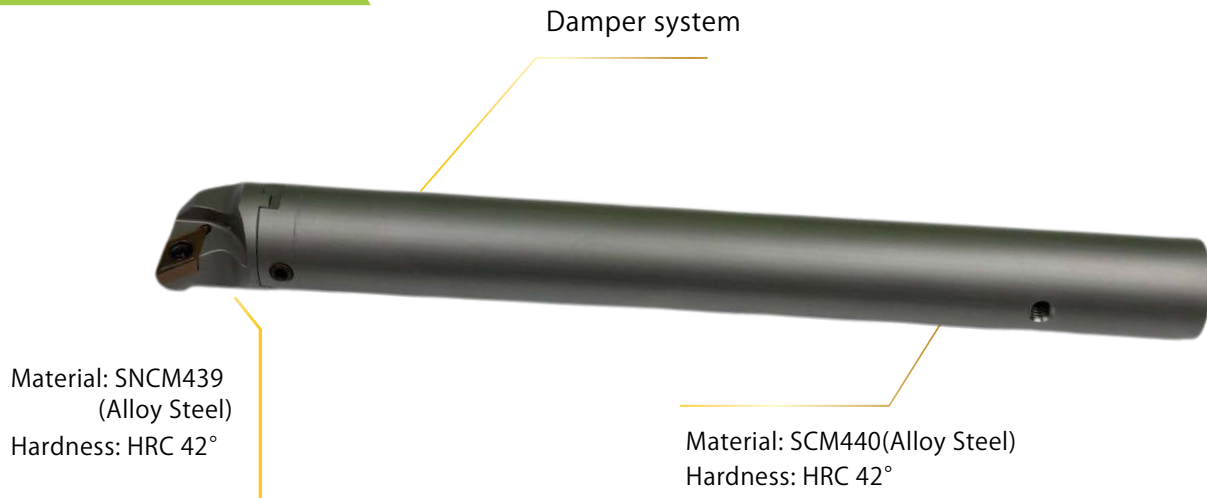


Ratio	Order No.	ØD (mm)	L (mm)	Overhang(mm)	Removable Cutting Head	Screw	Wrench
6D	MR3S16-159	16	159	96	CP1-16-S-Type	M4	2
	MR3S18-178	18	178	108	CP1-1-18-S-Type	M4	2
8D	MR3S16-199	16	199	128	CP1-16-S-Type	M4	2
	MR3S18-218	18	218	144	CP1-1-18-S-Type	M4	2
10D	MR3S16-229	16	229	160	CP1-16-S-Type	M4	2
	MR3S18-258	18	258	180	CP1-1-18-S-Type	M4	2
12D	MR3S16-269	16	269	192	CP1-16-S-Type	M4	2
	MR3S18-298	18	298	216	CP1-1-18-S-Type	M4	2
14D	MR3S16-309	16	309	224	CP1-16-S-Type	M4	2
	MR3S18-328	18	328	252	CP1-1-18-S-Type	M4	2

Customized tool diameter and length are available.

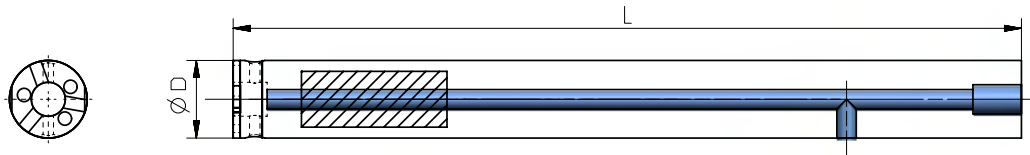
Removable Type Anti-Vibration Boring Bar

Invention Patent
US8371776 / I419764



Features

- 01. Suitable for deep hole roughing.
- 02. With coolant hole.
- 03. Can interchange different cutting heads.



Ratio	Order No.	ØD (mm)	L (mm)	Overhang(mm)	Removable Cutting Head	Screw	Wrench
6D	M6D-16-157P	16	157	96	CP1-16-S-Type	M3	1.5
	M6D-18-166P	18	166	108	CP1-1-18-S-Type	M3	1.5
	M6D-20-200P	20	200	120	CP2-20-S-Type	M3	1.5
	M6D-25-250P	25	250	150	CP3-25-S-Type	M4	1.5
	M6D-32-300P	32	300	192	CP4-32-S/P-Type	M5	1.5
	M6D-40-350P	40	350	240	CP5-40-S/P-Type	M6	5
	M6D-50-400P	50	400	300			
	M6D-60-450P	60	450	360			
8D	M8D-32-350P	32	350	256	CP4-32-S/P-Type	M5	4
	M8D-40-420P	40	420	320	CP5-40-S/P-Type	M6	5
	M8D-50-510P	50	510	400			
	M8D-60-620P	60	620	480			
10D	M10D-40-530P	40	530	400	CP5-40-S/P-Type	M6	5
	M10D-50-668P	50	668	500			
	M10D-60-808P	60	808	600			

Customized tool diameter and length are available.

TSC

TSC Removable Type Anti-Vibration Boring Bar

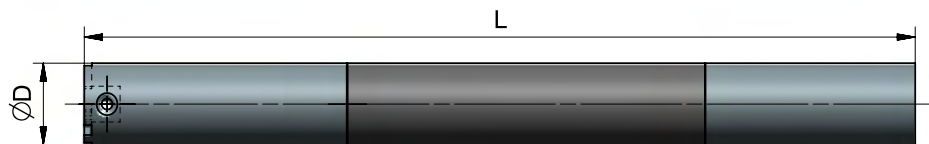
Invention Patent
I413557 /I419764



Features

01. Suitable for deep hole finishing.
02. With coolant hole, can interchange different cutting heads.
03. Middle section is carbide, which can increase the rigidity of boring bar and make it more stable when machining.
04. Please work with anti-vibration cutting sleeve to have better anti-vibration effect.

Invention Patent
I413557 /I419764

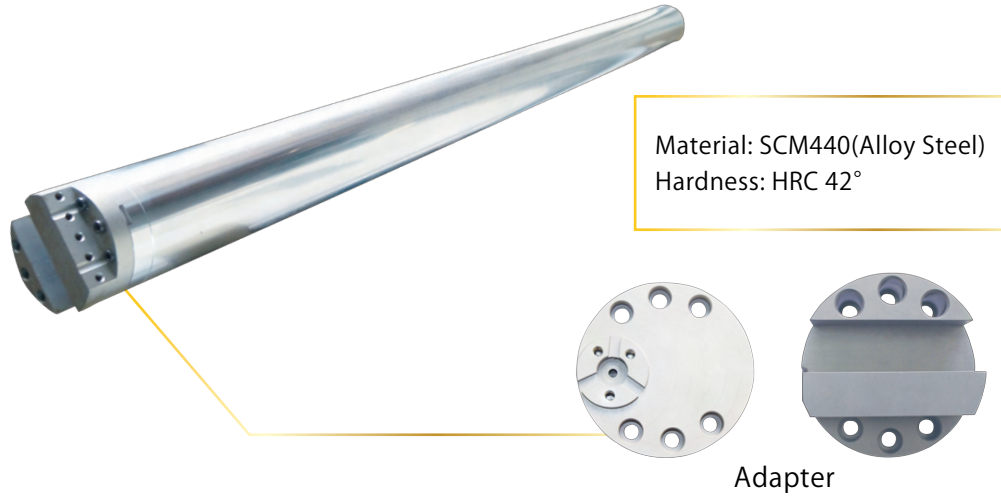


Ratio	Order No.	ØD (mm)	L (mm)	Overhang(mm)	Removable Cutting Head	Screw	Wrench
6D	TSC-16-159P	16	159	96	CP1-16-S/P-Type	M3	2.5
	TSC-18-178P	18	178	108	CP1-1-18-S/P-Type	M4	3
	TSC-20-200P	20	200	120	CP2-20-S-Type	M3	2.5
	TSC-25-250P	25	250	150	CP3-25-S/P-Type	M4	3
	TSC-32-300P	32	300	192	CP4-32-S/P-Type	M5	4
8D	TSC-16-199P	16	199	128	CP1-16-S-Type	M3	2.5
	TSC-18-218P	18	218	144	CP1-1-18-S-Type	M4	3
	TSC-20-250P	20	250	160	CP2-20-S-Type	M3	2.5
	TSC-25-300P	25	300	200	CP3-25-S-Type	M4	3
	TSC-32-350P	32	350	256	CP4-32-S/P-Type	M5	4
10D	TSC-16-229P	16	229	160	CP1-16-S-Type	M3	2.5
	TSC-18-258P	18	258	180	CP1-1-18-S-Type	M4	3
	TSC-20-300P	20	300	200	CP2-20-S/P-Type	M5	4
	TSC-25-350P	25	350	320	CP4-32-S/P-Type	M5	4
	TSC-32-420P	32	420	400	CP5-40-S/P-Type	M6	5
	TSC-40-520	40	520	320	CP4-32-S/P-Type	M5	4
12D	TSC-16-269P	16	269	240	CP3-16-S-Type	M3	2.5
	TSC-18-298P	18	298	300	CP3-18-S-Type	M4	3
	TSC-20-340P	20	340	240	CP2-20-S-Type	M3	2.5
	TSC-25-400P	25	400	300	CP3-25-S-Type	M4	3
	TSC-32-480P	32	480	384	CP4-32-S-Type	M5	4
	TSC-40-580P	40	580	480	CP5-40-S-Type	M6	5
14D	TSC-16-309P	16	309	280	CP2-20-S-Type	M3	2.5
	TSC-18-328P	18	328	350	CP3-25-S-Type	M4	3
	TSC-20-380P	20	380	280	CP2-20-S-Type	M3	2.5
	TSC-25-450P	25	450	350	CP3-25-S-Type	M4	3
	TSC-32-560P	32	560	448	CP4-32-S-Type	M5	4
	TSC-40-660P	40	660	560	CP5-40-S-Type	M6	5

Customized tool diameter and length are available.

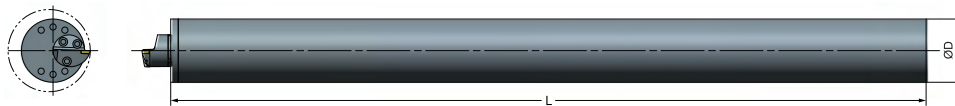
Giant Anti-Vibration Boring Bar

Invention Patent
US8371776



Features

- 01. Can interchange different cutting heads.
- 02. Optimizing the workpiece surface.
- 03. Machining inner and outer surface with adapter for replacement.
- 04. The boring bar has damper system inside, which can increase the stability of the bar and work efficiency.

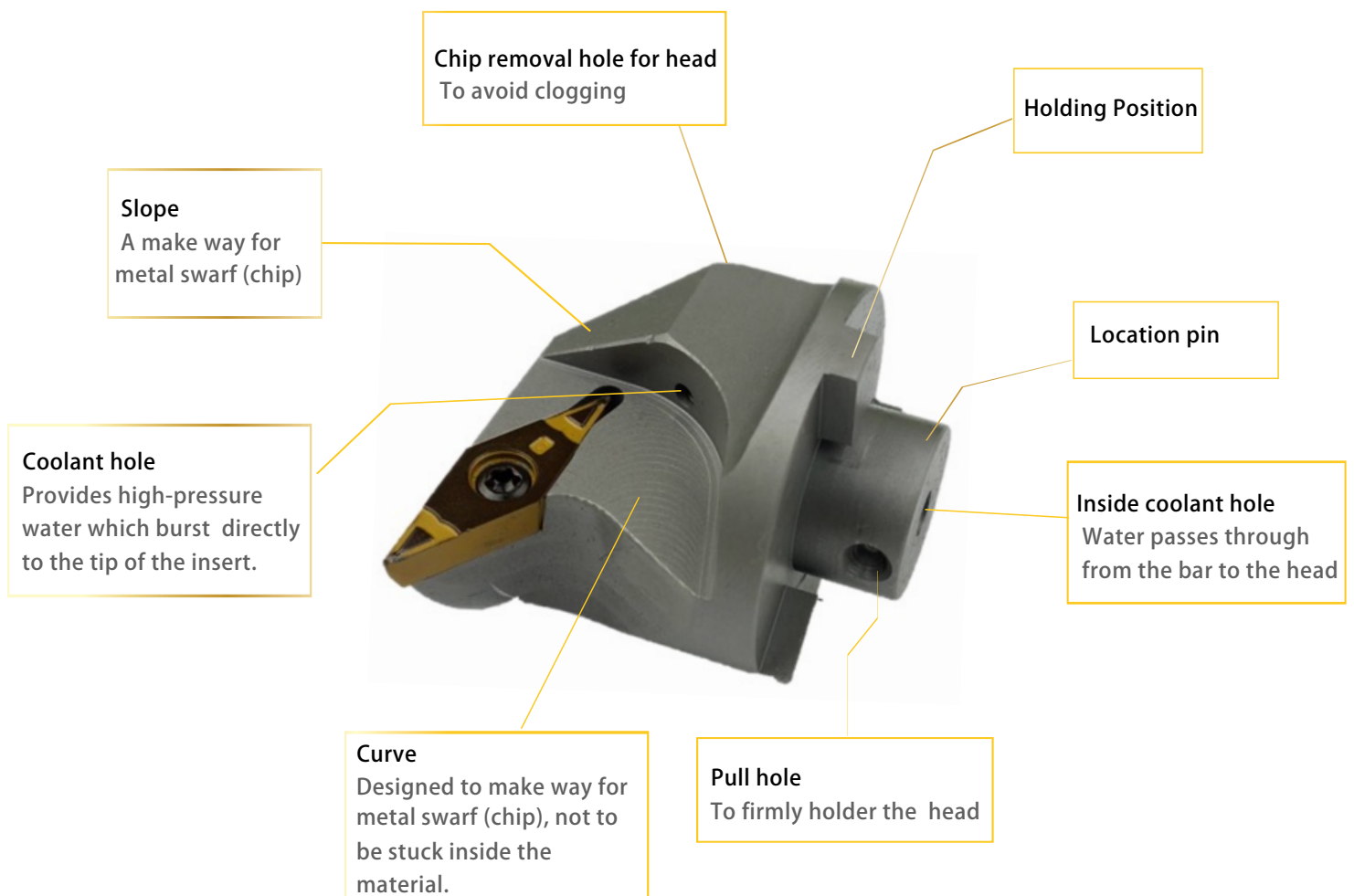


Ratio	Order No.	ØD (mm)	L (mm)	Overhang(mm)	Removable Cutting Head	Screw 🔩	Wrench 🔧
7D	M7D-80-900P	80	900	560	CP5-40-S/P-Type	M6	5
	M7D-100-1200P	100	1200	700			
	M7D-120-1500P	120	1500	840			
	M7D-150-1900P	150	1900	1050			
	M7D-200-2400P	200	2400	1400			
	M7D-250-3200P	250	3200	1750			
10D	M10D-80-1200P	80	1200	800			
	M10D-100-1500P	100	1500	1000			
	M10D-120-1900P	120	1900	1200			
	M10D-150-2400P	150	2400	1500			
	M10D-180-2800P	180	2800	1800			
	M10D-200-3200P	200	3200	2000			
	M10D-250-4000P	250	4000	2500			

Customized tool diameter and length are available.

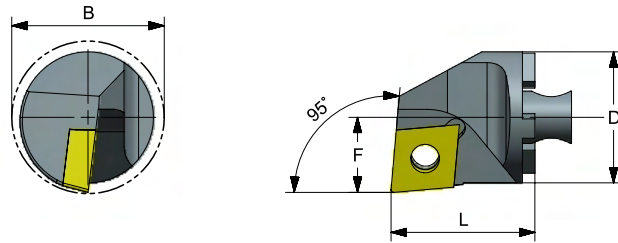
Removable Cutting Head

Type	Shim	Advantage	Machining	Disadvantage
S-Type	No	Less cutting resistance	Profile turning, reducing interference	High insert price
Y-Type	Yes	Suitable for heavy cutting, reset accurately, good chip breaking effect with high pressure equipment	Interrupted cutting	Poor chip removal
P-Type	No	Good chip removal	Continuous cutting	Large interrupted cutting may cause insert displacement



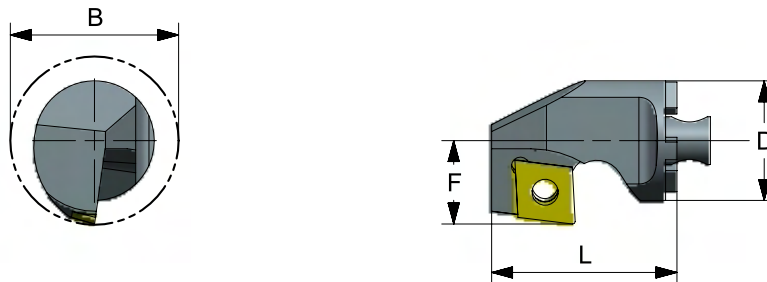
Removable Cutting Head

SCLC



Order No.	Insert	Dimensions (mm)					Screw	Wrench
Right		D	F	K	L	B		
CP1-16-SCLCR/L-09	CCMT09T304	16	11	9	21	20	M4	T15
CP1-1-18-SCLCR/L-09		18	12	8	22	22		
CP2-20-SCLCR/L-09		20	13	8	25	24		
CP3-25-SCLCR/L-09		25	17	8	28	31		
CP4-32-SCLCR/L-09		32	22	6	35	39		
CP3-25-SCLCR/L-12	CCMT120404	25	17	8	28	31	M5	T20
CP4-32-SCLCR/L-12		32	22	6	35	39		
CP5-40-SCLCR/L-12		40	27	4	38	48		

SCZC

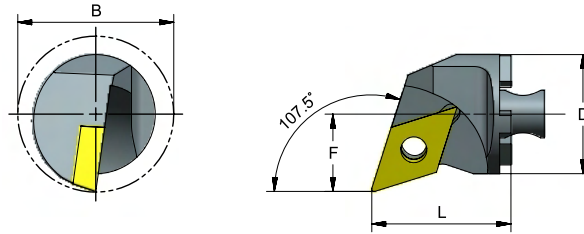


Order No.	Insert	Dimensions (mm)					Screw	Wrench
Right		D	F	K	L	B		
CP1-16-SCZCR/L-06	CCMT060204	16	11.5	8	21	21	M2.5	T8
CP1-1-18-SCZCR/L-06		18	12.5	8	22	23		
CP2-20-SCZCR/L-09	CCMT09T304	20	14.5	8	25	25	M4	T15
CP3-25-SCZCR/L-09		25	17	6	28	31		
CP3-25-SCZCR/L-12	CCMT120404	25	17	8	28	31	M5	T20
CP4-32-SCZCR/L-12		32	21	6	35	38		
CP5-40-SCZCR/L-12		40	25	4	38	47		

Customized removable cutting head is available.

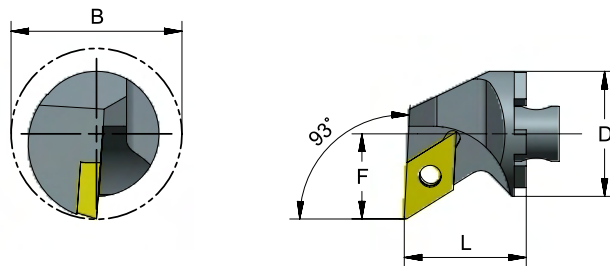
Removable Cutting Head

SDQC



Order No.	Insert	Dimensions (mm)					Screw	Wrench
		D	F	K	L	B		
Right		D	F	K	L	B		
CP1-16-SDQCR/L-07	DCMT070204	16	11	7	21	20	M2.5	T8
CP1-1-18-SDQCR/L-07		18	12	7	22	22		
CP2-20-SDQCR/L-07		20	13	6	25	24		
CP2-20-SDQCR/L-11	DCMT11T304	20	13	6	25	24	M4	T15
CP3-25-SDQCR/L-11		25	17	4	28	31		
CP4-32-SDQCR/L-11		32	22	4	35	37		
CP5-40-SDQCR/L-11		40	27	2	38	48		

SDUC

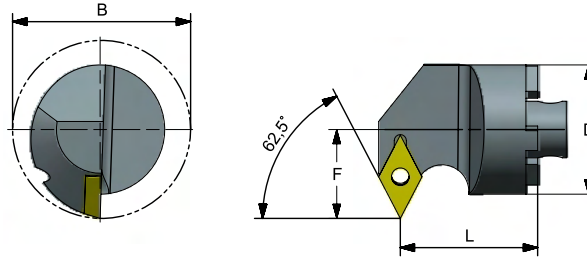


Order No.	Insert	Dimensions (mm)					Screw	Wrench
		D	F	K	L	B		
Right		D	F	K	L	B		
CP1-16-SDUCR/L-07	DCMT070204	16	11	7	21	20	M2.5	T8
CP1-1-18-SDUCR/L-07		18	12	7	22	22		
CP2-20-SDUCR/L-07		20	13	6	25	24		
CP2-20-SDUCR/L-11	DCMT11T304	20	13	8	25	24	M4	T15
CP3-25-SDUCR/L-11		25	17	4	28	31		
CP4-32-SDUCR/L-11		32	22	4	35	39		
CP5-40-SDUCR/L-11		40	27	2	38	48		

Customized removable cutting head is available.

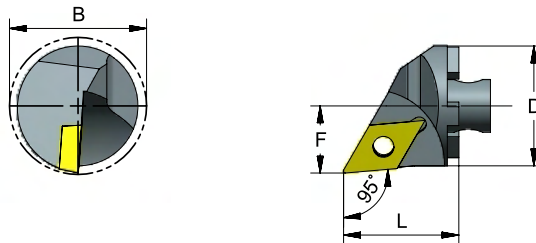
Removable Cutting Head

SDWC



Order No.	Insert	Dimensions (mm)					Screw	Wrench
Right		D	F	K	L	B		
CP1-16-SDWCR/L-11	DCMT11T304	16	11	8	21	20	M4	T15
CP1-1-18-SDWCR/L-11		18	12	8	22	21		
CP2-20-SDWCR/L-11		20	14.5	8	25	26		
CP3-25-SDWCR/L-11		25	18	6	28	32		
CP4-32-SDWCR/L-11		32	22	4	35	39		
CP5-40-SDWCR/L-11		40	27	2	38	48		

SDXC

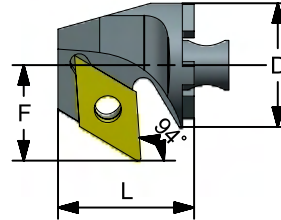
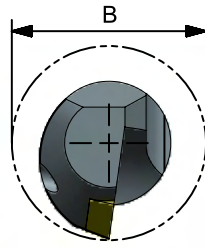


Order No.	Insert	Dimensions (mm)					Screw	Wrench
Right		D	F	K	L	B		
CP1-16-SDXCR/L-07	DCMT070204	16	9	6	21	19	M2.5	T8
CP1-1-18-SDXCR/L-07		18	10	6	22	20		
CP2-20-SDXCR/L-07		20	11.5	6	25	24		
CP3-25-SDXCR/L-11	DCMT11T304	25	14	4	28	28	M4	T15
CP4-32-SDXCR/L-11		32	18	4	35	36		
CP5-40-SDXCR/L-11		40	22	2	38	44		

Customized removable cutting head is available.

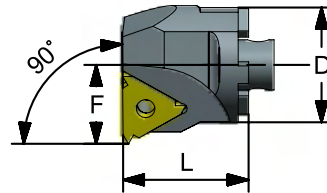
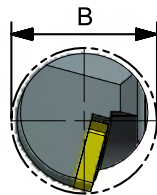
Removable Cutting Head

SDZC



Order No.	Insert	Dimensions (mm)					Screw	Wrench
Right		D	F	K	L	B		
CP1-16-SDZCR/L-11	DCMT11T304	16	12.5	8	21	22	M4	T15
CP1-1-18-SDZCR/L-11		18	14	8	22	24		
CP2-20-SDZCR/L-11		20	15.5	6	25	27		
CP3-25-SDZCR/L-11		25	18	6	28	32		
CP4-32-SDZCR/L-11		32	22	4	35	39		
CP5-40-SDZCR/L-11		40	27	4	38	48		

SIR

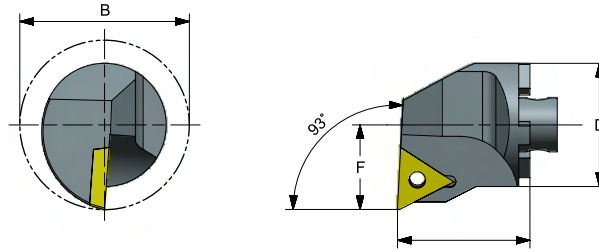


Order No.	Insert	Dimensions (mm)					Screw	Wrench
Right		D	F	K	L	B		
CP1-16-SIR/L-16	IR16	16	10.5	17	21	20	M3.5	T10
CP1-1-18-SIR/L-16		18	12	17	22	23		
CP2-20-SIR/L-16		20	13.7	21	25	25		
CP3-25-SIR/L-16		25	16.2	21	28	31		
CP4-32-SIR/L-16		32	19.7	15	35	38		
CP5-40-SIR/L-16		40	25.7	15	38	48		
CP3-25-SIR/L-22	IR22	25	18.1	21	28	33	M4.5	T15
CP4-32-SIR/L-22		32	21.6	15	35	40		
CP5-40-SIR/L-22		40	25.7	15	38	48		

Customized removable cutting head is available.

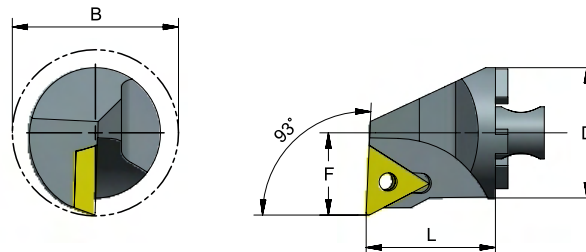
Removable Cutting Head

STUC



Order No.	Insert	Dimensions (mm)					Screw	Wrench
		D	F	K	L	B		
Right								
CP1-16-STUCR/L-11	TCMT110204	16	9	8	21	18	M2.5	T8
CP1-18-STUCR/L-11		18	10	8	22	20		
CP2-20-STUCR/L-11		20	11.5	6	25	27.5		
CP3-25-STUCR/L-11		25	14	4	28	27.5		
CP2-20-STUCR/L-16	TCMT16T304	20	13	8	25	23	M4	T15
CP3-25-STUCR/L-16		25	17	6	28	31		
CP4-32-STUCR/L-16		32	22	4	35	39		
CP5-40-STUCR/L-16		40	27	0	38	48		

STUP

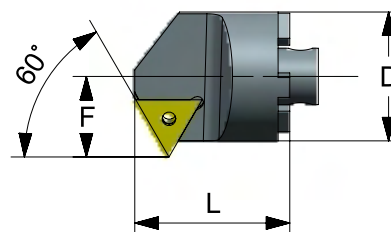
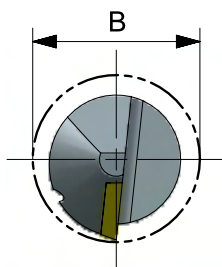


Order No.	Insert	Dimensions (mm)					Screw	Wrench
		D	F	K	L	B		
Right								
CP2-16-STUPR/L-11	TPMT110304	16	11	6	21	20	M3	T10
CP2-18-STUPR/L-11		18	12	6	22	22		
CP2-20-STUPR/L-11		20	13	2	25	24		
CP3-25-STUPR/L-11		25	17	8	28	31		
CP4-32-STUPR/L-11		32	22	6	35	39		
CP2-20-STUPR/L-16	TPMT1603/0404	20	13	8	25	24	M4	T15
CP3-25-STUPR/L-16		25	14.5	8	28	28		
CP4-32-STUPR/L-16		32	22	6	35	39		
CP5-40-STUPR/L-16		40	27	6	38	48		

Customized removable cutting head is available.

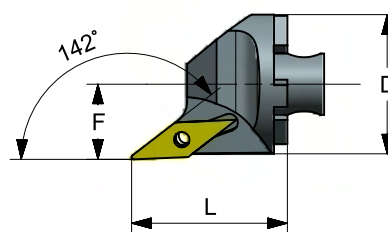
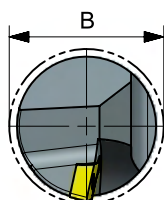
Removable Cutting Head

STWC



Order No.	Insert	Dimensions (mm)					Screw	Wrench
Right		D	F	K	L	B		
CP1-16-STWCR/L-11	TCMT110204	16	11	6	21	20	M2.5	T15
CP1-1-18-STWCR/L-11		18	12	6	22	22		
CP2-20-STWCR/L-11		20	16	4	25	25		
CP3-25-STWCR/L-11		25	20	2	28	31		
CP4-32-STWCR/L-11		32	19	0	35	39		
CP2-20-STWCR/L-16	TCMT16T304	20	14.5	8	25	25	M4	T15
CP3-25-STWCR/L-16		25	17	6	28	32		
CP4-32-STWCR/L-16		32	20	4	35	39		
CP5-40-STWCR/L-16		40	24	0	38	46		

SVJCR

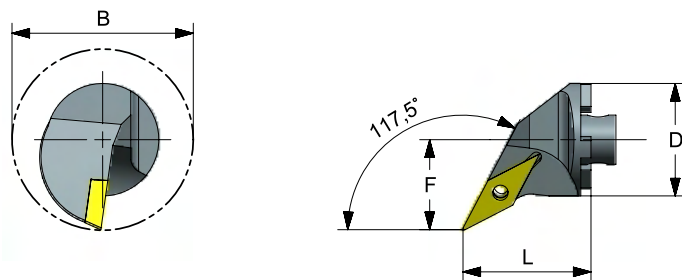


Order No.	Insert	Dimensions (mm)					Screw	Wrench
Right		D	F	K	L	B		
CP1-16-SVJCR/L-11	VCMT110304	16	9	8	21	18	M2.5	T8
CP1-1-18-SVJCR/L-11		18	10	8	22	20		
CP2-20-SVJCR/L-11		20	11.5	6	25	23		
CP3-25-SVJCR/L-11		25	13.5	6	28	27		
CP4-32-SVJCR/L-11		32	18	6	35	35		
CP5-40-SVJCR/L-16	VCMT160404	40	22	4	38	43	M4	T15

Customized removable cutting head is available.

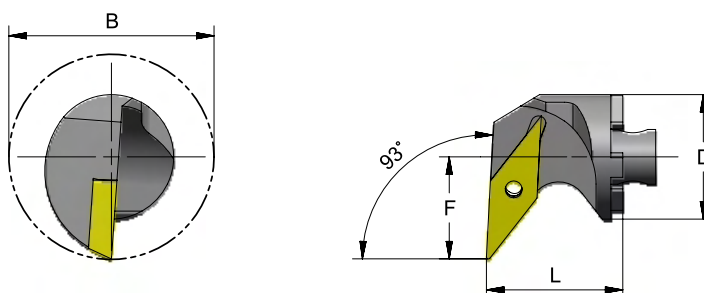
Removable Cutting Head

SVQC



Order No.	Insert	Dimensions (mm)					Screw	Wrench
		D	F	K	L	B		
Right								
CP1-16-SVQCR/L-11	VCMT110304	16	11.5	10	21	21	M2.5	T8
CP1-1-18-SVQCR/L-11		18	12.5	10	22	23		
CP2-20-SVQCR/L-11		20	13	8	25	24		
CP3-25-SVQCR/L-16	VCMT160304	25	16.5	4	28	31	M4	T15
CP4-32-SVQCR/L-16		32	22.5	8	35	39		
CP5-40-SVQCR/L-16		40	27	6	38	48		

SVUC

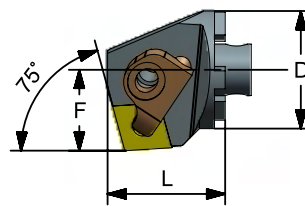
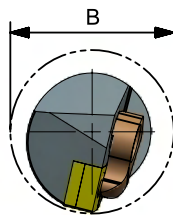
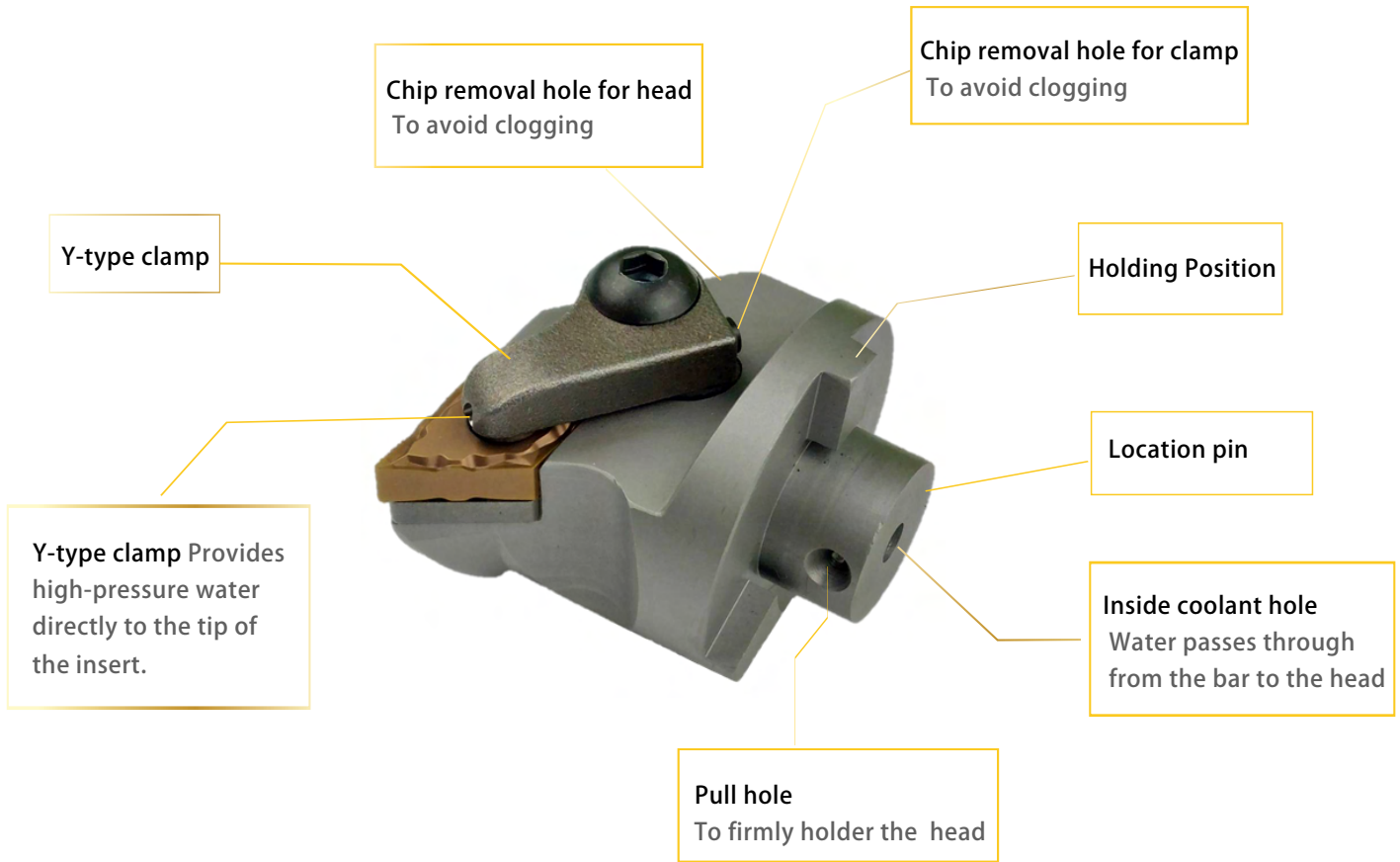


Order No.	Insert	Dimensions (mm)					Screw	Wrench
		D	F	K	L	B		
Right								
CP1-16-SVUCR/L-11	VCMT110304	16	13	8	21	21	M2.5	T8
CP1-1-18-SVUCR/L-11		18	13	7	22	23		
CP2-20-SVUCR/L-11		20	14	6	25	25		
CP2-20-SVUCR/L-16	VCMT160404	20	21	8	25	32	M4	T15
CP3-25-SVUCR/L-16		25	20.5	4	28	34		
CP4-32-SVUCR/L-16		32	22.5	6	35	40		
CP5-40-SVUCR/L-16		40	27	6	38	48		

Customized removable cutting head is available.

Invention Patent
I1638692/ I665038/ I606877

Removable Cutting Head

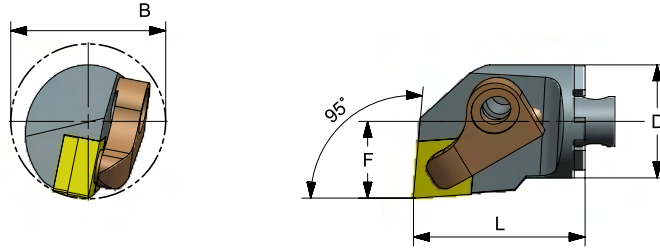


Order No.	Insert	Dimensions (mm)					Clamp	Clamp Screw	Spring	Shim	Shim Screw	Wrench
Right		D	F	K	L	B						
CP2-20-YCKNR/L-12	CN..090404	20	13	15	25	26	D-CLN2	MI	AD0G	-	-	T15
CP3-25-YCKNR/L-12		25	17	12	28	32						
CP4-32-YCKNR/L-12	CN..120404	32	32	17	35	40	D-CLN	M6	AD01	GMC-422-4	M5	LW050
CP5-40-YCKNR/L-12		40	40	15	38	50						

Customized tool diameter and length are available.

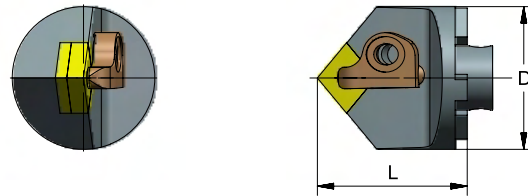
Removable Cutting Head

YCLN



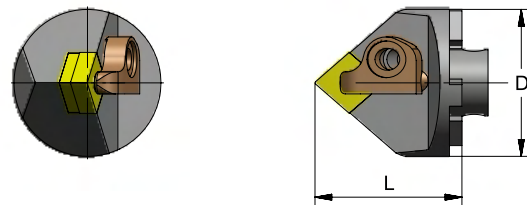
Order No.	Insert	Dimensions (mm)					Clamp	Clamp Screw	Spring	Shim	Shim Screw	Wrench
		D	F	K	L	B						
Right		D	F	K	L	B						
CP2-20-YCLNR/L-12	CN..090404	20	13	15	25	26	D-CLN2	MI	AD0G	-	-	T15
CP3-25-YCLNR/L-12		25	17	12	28	32						
CP4-32-YCLNR/L-12	CN..120404	32	22	17	35	40	D-CLN	M6	AD01	GMC-422-4	M5	LW050
CP5-40-YCLNR/L-12		40	27	15	38	50						

YCMN



Order No.	Insert	Dimensions (mm)				Clamp	Clamp Screw	Spring	Shim	Shim Screw	Wrench
		D	F	K	L						
Right		D	F	K	L						
CP4-32-YCMN/L-12	CN..120404	32	0	15	35	D-CLN	M6	AD01	GMC-422-4	M5	LW050
CP5-40-YCMN/L-12		40	0	15	38						

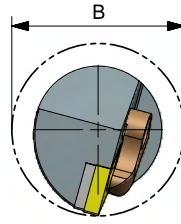
YCNN



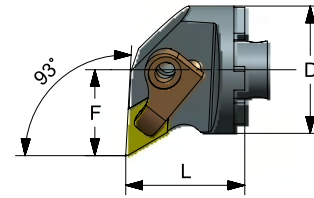
Order No.	Insert	Dimensions (mm)				Clamp	Clamp Screw	Spring	Shim	Shim Screw	Wrench
		D	F	K	L						
Right		D	F	K	L						
CP4-32-YCNN/L-12	CN..120404	32	0	15	35	D-CLN	M6	AD01	GMC-422-4	M5	LW050
CP5-40-YCNN/L-12		40	0	15	38						

Customized removable cutting head is available.

YDUN

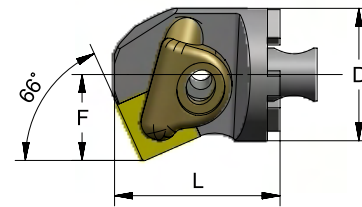
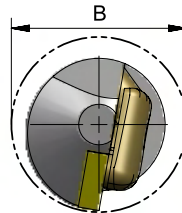


Removable Cutting Head



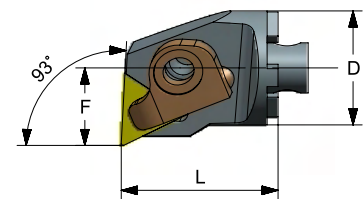
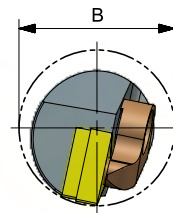
Order No.	Insert	Dimensions (mm)					Clamp	Clamp Screw	Spring	Shim	Shim Screw	Wrench
		D	F	K	L	B						
Right		D	F	K	L	B						
CP2-20-YDUNR/L-1104	DN..110404	20	13	15	25	26	D-CLN2	MI	AD0G	-	-	T15
CP3-25-YDUNR/L-1104		25	17	12	28	32						
CP4-32-YDUNR/L-1506	DN..150604	32	22	17	35	40	D-CLN	M6	AD01	GMC-422-4	M5	LW050
CP5-40-YDUNR/L-1506		40	27	15	38	50						

YSKN



Order No.	Insert	Dimensions (mm)					Clamp	Clamp Screw	Spring	Shim	Shim Screw	Wrench
		D	F	K	L	B						
Right		D	F	K	L	B						
CP2-20-YSKNR/L-09	SN..090404	20	13	15	25	26	D-CLN2	MI	AD0G	-	-	T15
CP3-25-YSKNR/L-09		25	17	12	28	32						
CP4-32-YSKNR/L-12	SN..120404	32	22	17	35	40	D-CLN	M6	AD01	GMC-422-4	M5	LW050
CP5-40-YSKNR/L-12		40	27	15	38	50						

YTUN

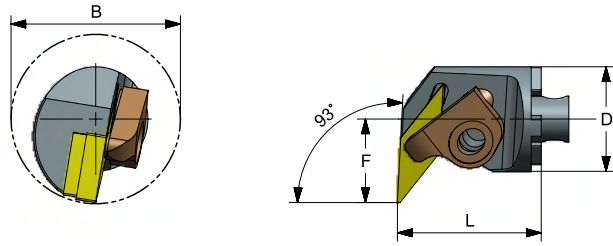


Order No.	Insert	Dimensions (mm)					Clamp	Clamp Screw	Spring	Shim	Shim Screw	Wrench
		D	F	K	L	B						
Right		D	F	K	L	B						
CP2-20-YTUNR/L-11	TN..110404	20	13	15	25	26	D-CLN2	MI	AD0G	-	-	T15
CP3-25-YTUNR/L-11		25	17	12	28	32						
CP4-32-YTUNR/L-16	TN..160404	32	22	17	35	40	D-CLN	M6	AD01	GMC-422-4	M5	LW050
CP5-40-YTUNR/L-16		40	27	15	38	50						

Customized removable cutting head is available.

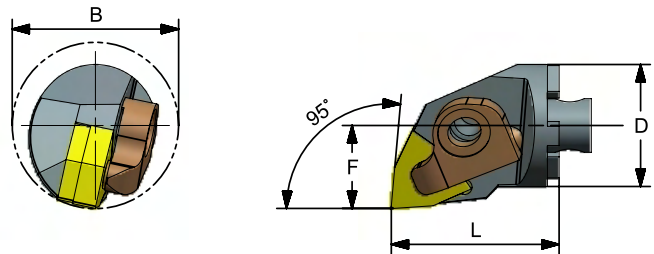
Removable Cutting Head

YVUN



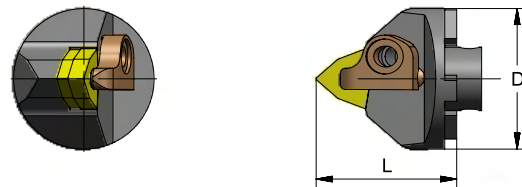
Order No.	Insert	Dimensions (mm)					Clamp	Clamp Screw	Spring	Shim	Shim Screw	Wrench
Right		D	F	K	L	B						
CP4-32-PVUNR/L-16	VN..160404	32	22	10	39	39	D-VJN-1	M6	AD01	GMV-322	M4	LW050
CP5-40-PVUNR/L-16		40	27	10	40	48						

YWLN



Order No.	Insert	Dimensions (mm)					Clamp	Clamp Screw	Spring	Shim	Shim Screw	Wrench
Right		D	F	K	L	B						
CP2-20-YWLNLR/L-06	WNMG0604	20	13	15	25	26	D-CLN2	MI	AD0G	-	-	T15
CP3-25-YWLNLR/L-06		25	17	12	28	32						
CP4-32-YWLNLR/L-08	WNMG0804	32	22	17	35	40	D-CLN	M6	AD01	GMC-422-4	M5	LW050
CP5-40-YWLNLR/L-08		40	27	15	38	50						

YWNN

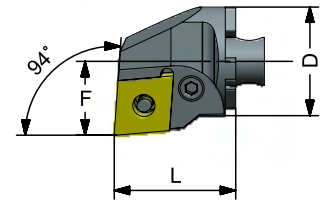
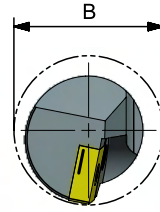


Order No.	Insert	Dimensions (mm)				Clamp	Clamp Screw	Spring	Shim	Shim Screw	Wrench
Right		D	F	K	L						
CP4-32-YWNN/L-08	CN..120404	32	0	15	35	D-CLN	M6	AD01	GMC-422-4	M5	LW050
CP5-40-YWNN/L-08		40	0	15	38						

Customized removable cutting head is available.

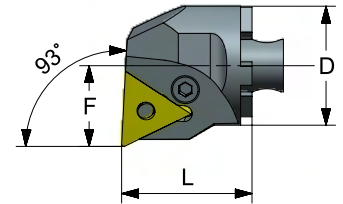
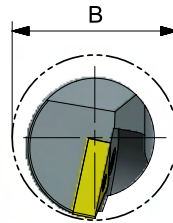
Removable Cutting Head

PCLN



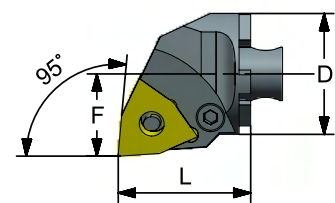
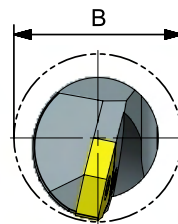
Order No.	Insert	Dimensions (mm)					Parts			Wrench
		D	F	K	L	B				
Right										
CH2-20-PCLNR/L-12	CN..120404	20	13	12	29	24	GPC4	LSP3	GSL14	LW025
CH3-25-PCLNR/L-12		25	17	11	32	31			GSL17	
CH4-32-PCLNR/L-12		32	22	11	33	39				
CH5-40-PCLNR/L-12		40	27	10	37	48				

PTUN



Order No.	Insert	Dimensions (mm)					Parts			Wrench
		D	F	K	L	B				
Right										
CH2-20-PTUNR/L-16	TN..160404	20	13	14	27	24	GPC3	LSP2	GSL14	LW025
CH3-25-PTUNR/L-16		25	17	12	31	31			GSL14	
CH4-32-PTUNR/L-16		32	22	10	35	39				
CH5-40-PTUNR/L-16		40	27	10	38	48				

PWLN



Order No.	Insert	Dimensions (mm)					Parts			Wrench
		D	F	K	L	B				
Right										
CH2-20-PWLNR/L-08	WN..080404	20	13	14	25	24	GPC4	LSP3	GSL17	LW025
CH3-25-PWLNR/L-08		25	17	12	32	31			GSL17	
CH4-32-PWLNR/L-08		32	22	10	35	39				
CH5-40-PWLNR/L-08		40	27	8	37	48				

Customized removable cutting head is available.

Combination Type Anti-Vibration Boring Bar

Invention Patent I419764

Damper system



Material: SCM440
Hardness: HRC 42°

Features

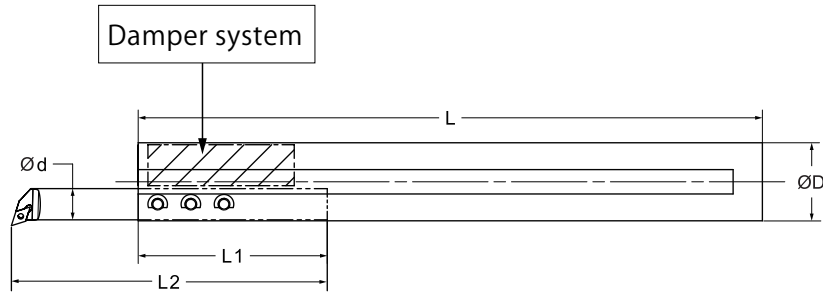
01. With coolant Hole.
02. With coolant system to extend tool life span and good cutting surface.
03. The tool is off center design and suitable for different diameter machining.
04. The front boring bar can be replaced freely (Boring bar with / without anti-vibration / carbide boring bar / left or right hand boring bar).

Ratio	Order No.	ΦD (mm)	Φd (mm)	L (mm)	L1 (mm)	L2 (mm)
4D	MT32-S12H	H2	12	160	95	120
	MT32-S16H	32	16	160	95	175
	MT40-S12H	40	12	180	115	224
	MT40-S16H	40	16	180	115	280
	MTI 0-S20H	40	20	400	120	350
	MT5€S1Ġ H	50	16	200	95	175
	MTĠ €S2€H	50	20	200	115	224
	MTĠ €SĠ H	50	25	200	115	280
	MTĠ 0-S20H	60	20	200	120	350
	MTĠ 0-SĠ H	60	25	200	115	280
	MTĠ 0-SĠH	60	32	200	120	350

Customized tool diameter and length are available.

Combination Type Anti-Vibration Boring Bar

Invention Patent I419764



Ratio	Order No.	ΦD (mm)	Φd (mm)	L (mm)	L1 (mm)	L2 (mm)
6D	MT20-S08L-200	20	8	200	95	120
7D	MT25-S10L-200	25	10	200	95	175
	MT32-S12L-280	32	12	280	115	224
	MT40-S16L-320	40	16	280	115	280
	MT50-S20L-400	50	20	400	120	350
	MT60-S25L-540	60	25	540	120	420
	MT80-S32L-680	80	32	680	120	560
10D	MT100-S32L-1500	100	32	1500	250	1000

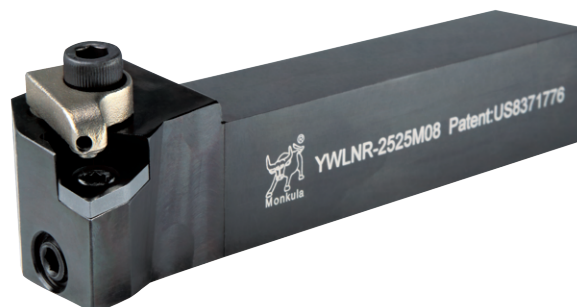
Customized tool diameter and length are available.



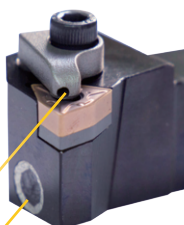
Y-Type (Anti-Vibration) External Turning Tool (with Coolant Hole)

Invention Patent
US8371776 / I638692 / I419764

Material: SNCM439(Alloy Steel)
Hardness: HRC 42°



Coolant hole	2.5mm	1.8mm
Pump	≤ 20 bar	≥ 40 bar



Damper system

High pressure
water spray pipe



01. Anti-Vibration x Coolant Hole

- With high pressure water spray pipe, using high pressure coolant system, less built-up edge.
- Increasing the effect of lubrication and cooling, solving the problem of chip removal and chip breaking.
- Less insert consumption, optimizing the workpiece surface.
- Resetting insert accurately, changing insert quickly.

02. No Anti-Vibration x Coolant Hole :

- With high pressure water spray pipe, using high pressure coolant system, less built-up edge.
- Increasing the effect of lubrication and cooling, solving the problem of chip removal and chip breaking.
- Resetting insert accurately, changing insert quickly.

03. Anti-Vibration x No Coolant Hole

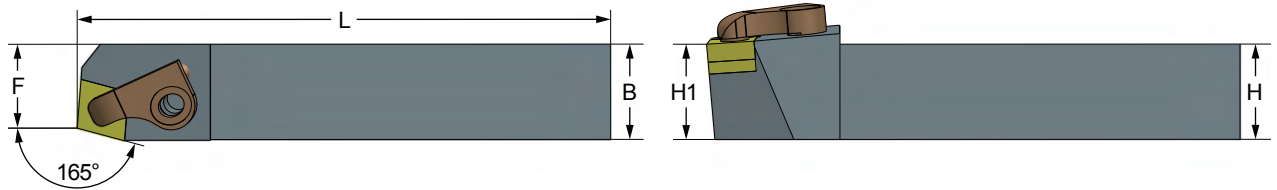
- Less insert consumption, optimizing the workpiece surface.
- Resetting insert accurately, changing insert quickly.

04. No Anti-Vibration x No Coolant Hole

- Resetting insert accurately, changing insert quickly.

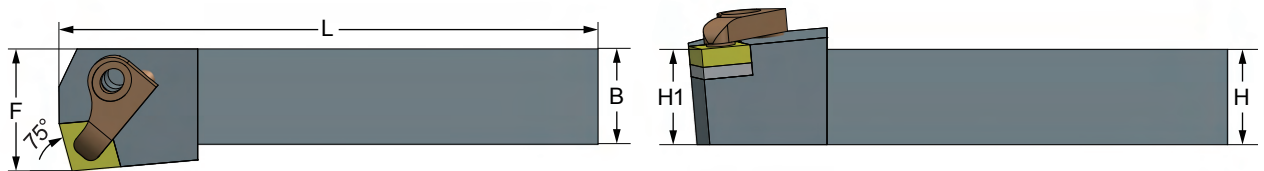
Y-Type (Anti-Vibration) External Turning Tool (with Coolant Hole)

YCBN



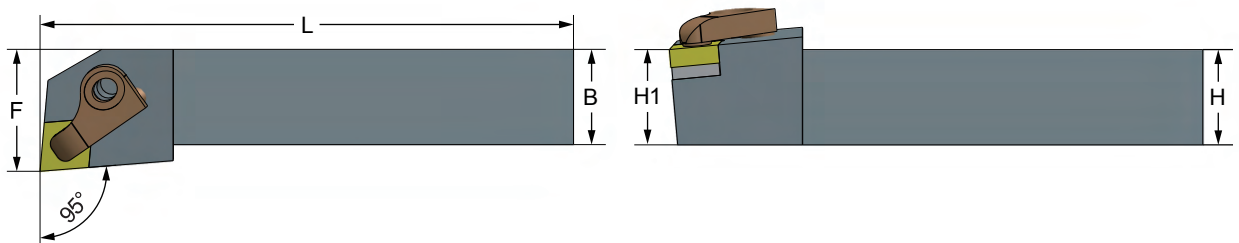
Order No.	Dimensions (mm)				Insert	Clamp	Clamp Screw	Spring	Shim	Shim Screw	Wrench
	Right / Left	H/H1	B	L							
YCBNR/L-2020K12	20	20	125	17	CNMG1204	D-CBN	M6	AD01	GMC-422-4	M5	LW050
YCBNR/L-2525M12	25	25	145	22							
YCBNR/L-3232P12	32	32	170	29							

YCKN



Order No.	Dimensions (mm)				Insert	Clamp	Clamp Screw	Spring	Shim	Shim Screw	Wrench
	Right / Left	H/H1	B	L							
YCKNR/L-2020K12	20	20	125	25	CNMG1204	D-CKN	M6	AD01	GMC-422-4	M5	LW050
YCKNR/L-2525M12	25	25	145	32							
YCKNR/L-3232P12	32	32	170	40							

YCLN

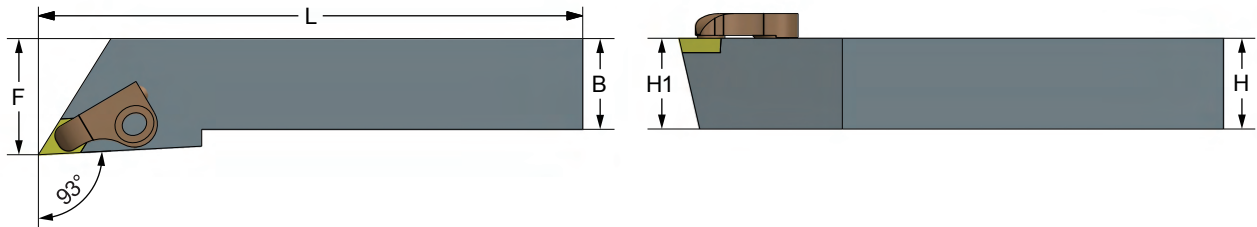


Order No.	Dimensions (mm)				Insert	Clamp	Clamp Screw	Spring	Shim	Shim Screw	Wrench
	Right / Left	H/H1	B	L							
YCLNR/L-2020K12	20	20	125	25	CNMG1204	D-CLN	M6	AD01	GMC-422-4	M5	LW050
YCLNR/L-2525M12	25	25	145	32							
YCLNR/L-3232P12	32	32	170	40							

Customized tool diameter and length are available.

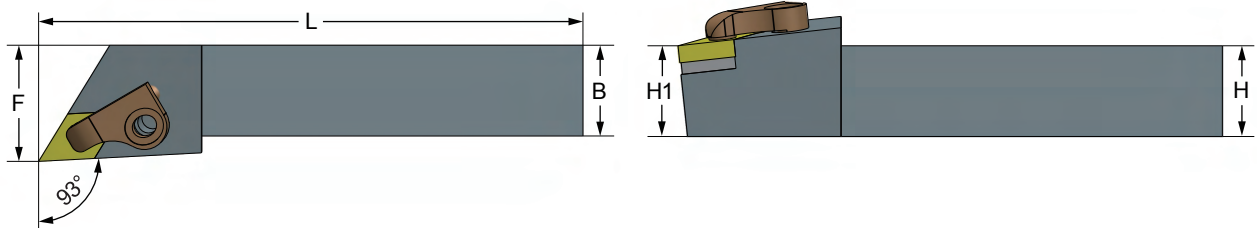
Y-Type (Anti-Vibration) External Turning Tool (with Coolant Hole)

YDJC



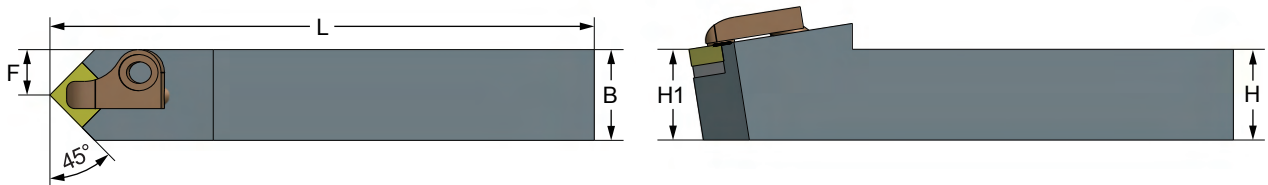
Order No.	Dimensions (mm)				Insert	Clamp	Clamp Screw	Spring	Wrench
	H/H1	B	L	F					
Right / Left	H/H1	B	L	F					
YDJCR/L-2020K11	20	20	125	25	DCMT11T3	D-DJC	M6	AD01	LW050
YDJCR/L-2525M11	25	25	145	32					

YDJN



Order No.	Dimensions (mm)				Insert	Clamp	Clamp Screw	Spring	Shim	Shim Screw	Wrench
	H/H1	B	L	F							
Right / Left	H/H1	B	L	F							
YDJNR/L-2020K1504	20	20	125	25	DNMG1504	D-DJN	M6	AD01	GW730	M4	LW050
YDJNR/L-2525M1504	25	25	145	32							

YSNN

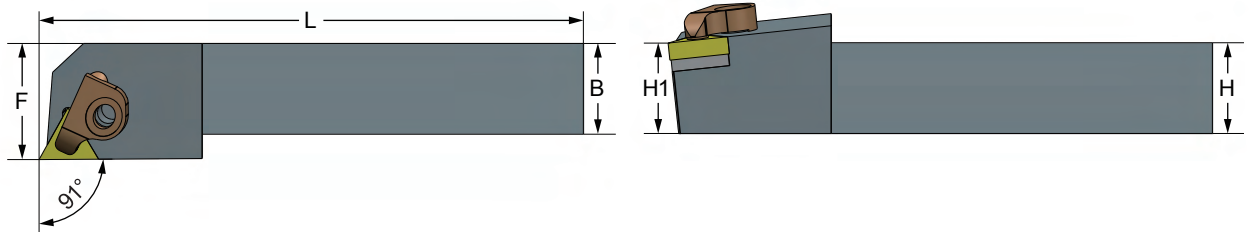


Order No.	Dimensions (mm)				Insert	Clamp	Clamp Screw	Spring	Shim	Shim Screw	Wrench
	H/H1	B	L	F							
Right / Left	H/H1	B	L	F							
YSNNN-2020K12	20	20	125	10	SNMG1204	D-SNN	M6	AD01	GMS-432	M6	LW050
YSNNN-2525M12	25	25	145	12.5							

Customized tool diameter and length are available.

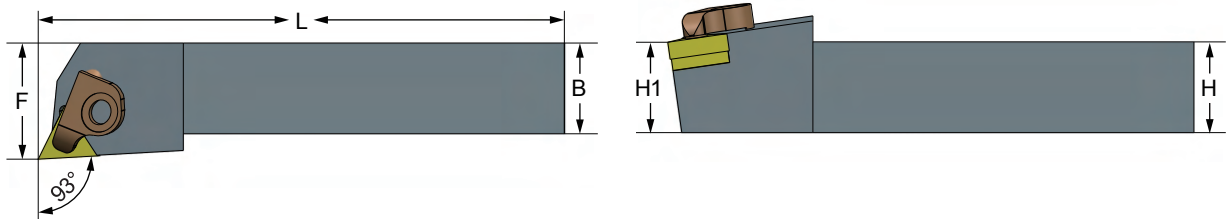
Y-Type (Anti-Vibration) External Turning Tool (with Coolant Hole)

■ YTGN



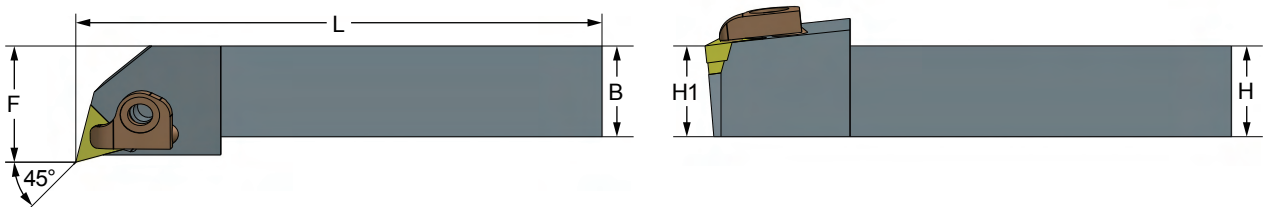
Order No.	Dimensions (mm)					Insert	Clamp	Clamp Screw	Spring	Shim	Shim Screw	Wrench
	Right / Left	H/H1	B	L	F							
YTGNR/L-2020K16	20	20	125	25	TNMG1604	D-TGN	M6	AD01	GMT-321-1	M4	LW050	
YTGNR/L-2525M16	25	25	145	32								

■ YTJN-1



Order No.	Dimensions (mm)					Insert	Clamp	Clamp Screw	Spring	Shim	Shim Screw	Wrench
	Right / Left	H/H1	B	L	F							
YTJNR/L-2020K16-1	20	20	125	25	TNMG1604	D-TJN	M6	AD01	GMT-321-1	M4	LW050	
YTJNR/L-2525M16-1	25	25	145	32								
YTJNR/L-3232P16-1	32	32	170	40								

■ YTQN

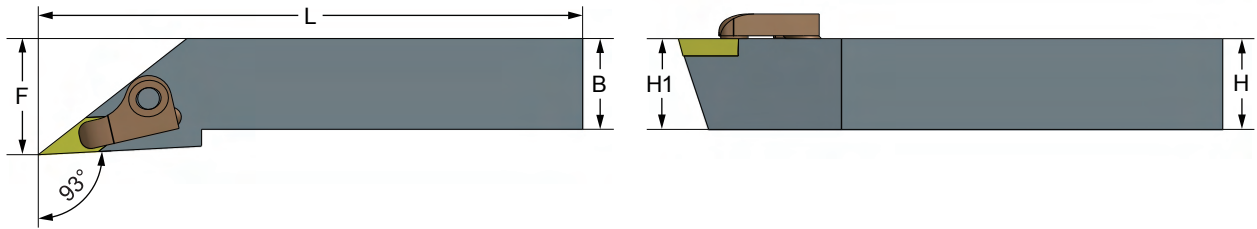


Order No.	Dimensions (mm)					Insert	Clamp	Clamp Screw	Spring	Shim	Shim Screw	Wrench
	Right / Left	H/H1	B	L	F							
YTQNR/L-2020K16	20	20	125	25	TNMG1604	D-TQN	M6	AD01	GMT-321-1	M4	LW050	
YTQNR/L-2525M16	25	25	145	32								

Customized tool diameter and length are available.

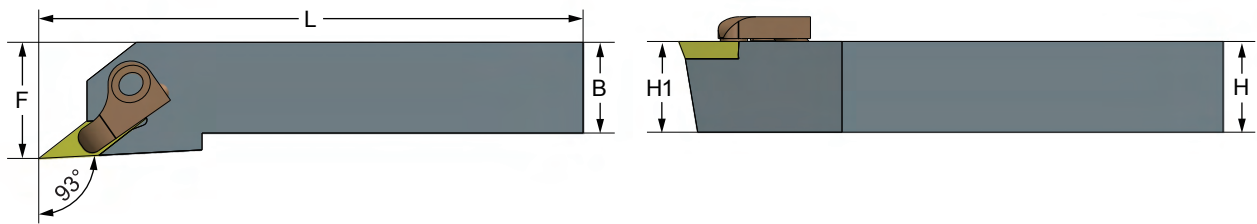
Y Y-Type (Anti-Vibration) External Turning Tool (with Coolant Hole)

YVJB



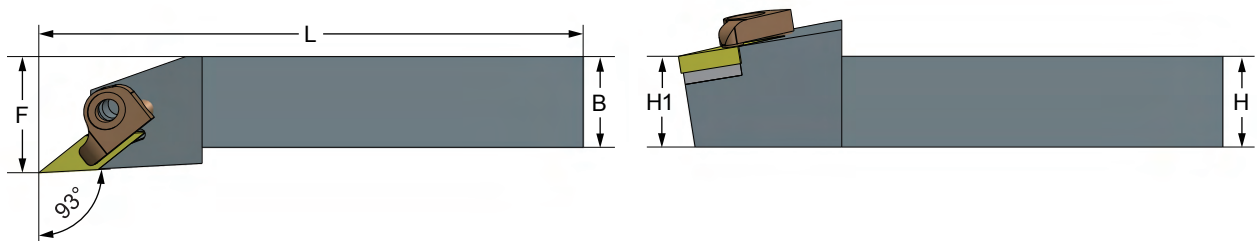
Order No.	Dimensions (mm)				Insert	Clamp	Clamp Screw	Spring	Wrench
Right / Left	H/H1	B	L	F					
YVJBR/L-2020K16	20	20	125	25	VBMT1604	D-VJB	M6	AD01	LW050
YVJBR/L-2525M16	25	25	145	32					

YVJC



Order No.	Dimensions (mm)				Insert	Clamp	Clamp Screw	Spring	Wrench
Right / Left	H/H1	B	L	F					
YVJCR/L-2020K16	20	20	125	25	VCMT1604	D-VJC	M6	AD01	LW050
YVJCR/L-2525M16	25	25	145	32					
YVJCR/L-2525M11	25	25	145	32	VCMT1103				

YVJN

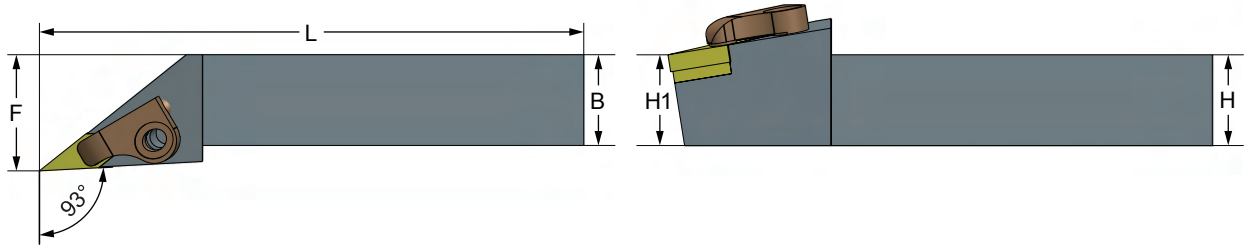


Order No.	Dimensions (mm)				Insert	Clamp	Clamp Screw	Spring	Shim	Shim Screw	Wrench
Right / Left	H/H1	B	L	F							
YVJNR-2020K16	20	20	125	25	VNMG1604	D-VJN-1	M6	AD01	GMV-322	M4	LW050
YVJNR-2525M16	25	25	145	32							

Customized tool diameter and length are available.

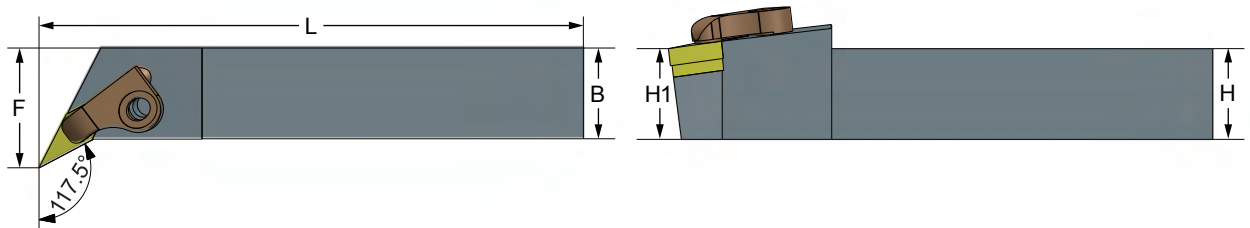
Y-Type (Anti-Vibration) External Turning Tool (with Coolant Hole)

■ YVJN-CB



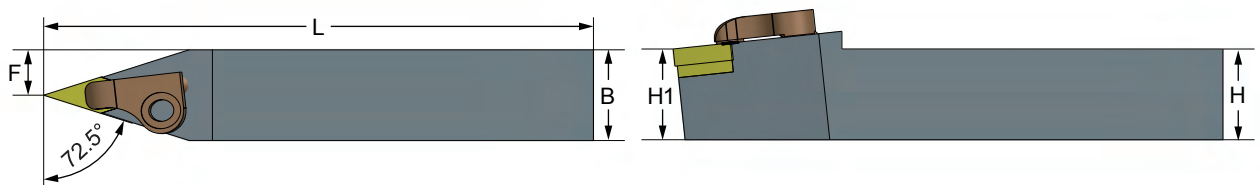
Order No.	Dimensions (mm)				Insert	Clamp	Clamp Screw	Spring	Shim	Shim Screw	Wrench
	Right / Left	H/H1	B	L							
YVJNR/L-2020K16-CB	20	20	125	25	VNMG1604	D-VJN	M6	AD01	GMV-322	M4	LW050
YVJNR/L-2525M16-CB	25	25	145	32							

■ YVQN



Order No.	Dimensions (mm)				Insert	Clamp	Clamp Screw	Spring	Shim	Shim Screw	Wrench
	Right / Left	H/H1	B	L							
YVQNR/L-2020K16	20	20	125	25	VNMG1604	D-VQN	M6	AD01	GMV-322	M4	LW050
YVQNR/L-2525M16	25	25	145	32							

■ YVVNN



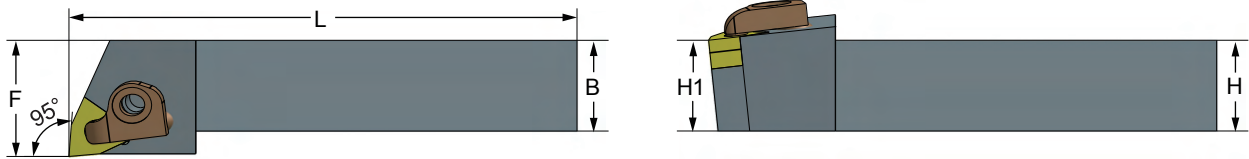
Order No.	Dimensions (mm)				Insert	Clamp	Clamp Screw	Spring	Shim	Shim Screw	Wrench
	Right / Left	H/H1	B	L							
YVVNN-2020K16	20	20	125	10	VNMG1604	D-VVN	M6	AD01	GMV-322	M4	LW050
YVVNN-2525M16	25	25	145	12.5							

Customized tool diameter and length are available.

Y

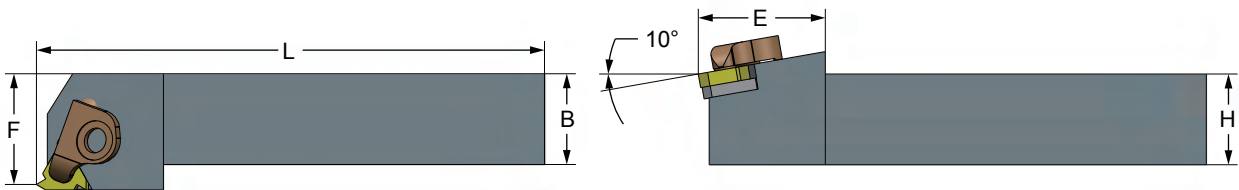
Y-Type (Anti-Vibration) External Turning Tool (with Coolant Hole)

YWLNR-1



Order No.	Dimensions (mm)				Insert	Clamp	Clamp Screw	Spring	Shim	Shim Screw	Wrench	
	Right / Left	H/H1	B	L								F
YWLNR/L-2020K08-1	Right / Left	20	20	125	25	WNMG0804	D-WLN	M6	AD01	GMW-422-1	M5	LW050
YWLNR/L-2525M08-1	25	25	145	32								
YWLNR/L-3232P08-1	32	32	170	40								

YER



Order No.	Dimensions (mm)					Insert	Clamp	Clamp Screw	Spring	Shim	Shim Screw	Wrench	
	Right / Left	H	B	L	E								F
YER-2525M16-0°	Right / Left	25	25	135	30	32	ER16	D-ER	M6	AD01	GMG-321R	M4	LW050
YER-2525M16-0.5°													
YER-2525M16-1°													
YER-2525M16-1.5°													
YER-2525M16-2°													
YER-2525M16-2.5°													
YER-2525M16-3°													
YER-2525M16-3.5°													

Customized tool diameter and length are available.

- Anti-Vibration Boring Tool
- Anti-Vibration Milling Tool
- Anti-Vibration Grinding Tool
- Special Combination Anti-Vibration Tool





LIVETOOLS.
Machine Tool People.
www.livetools.com.au

We are focused on delivering high value to our customers through excellent customer service, expert knowledge, big brands, high quality tools, special tools and our own Australian manufactured high performance carbide, HSS and Brazed cutting tools.

Contact:

P: 02 4017 0198

E: sales@livetools.com.au

A: 115 Young Street, Carrington NSW 2294