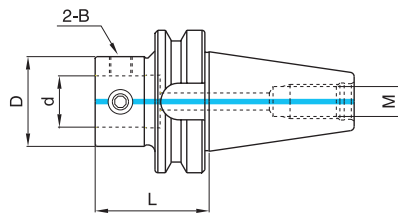


EXT MODULAR SYSTEM

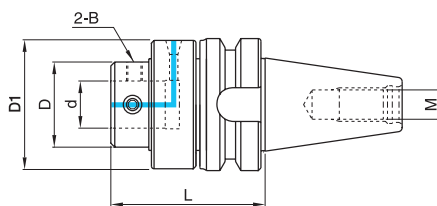
BT-ETA / BT-OME



● MAS403 / BT EXT Standard Holder

▶ BT-ETA

Code No.	치수 Dimension(mm)				부품 Component	
	D	d	L	M	B	
BT30-ETA-22045	40	22	45	M12	MTB-10145	
BT30-ETA-28055	50	28	55		MTB-12175	
BT40-ETA-22055	40	22	55	M16	MTB-10145	
BT40-ETA-28055	50	28	55		MTB-12175	
BT40-ETA-36055	63	36	55		MTB-16225	
BT50-ETA-22065	40	22	65	M24	MTB-10145	
BT50-ETA-28070	50	28	70		MTB-12175	
BT50-ETA-36080	63	36	80		MTB-16225	
BT50-ETA-45080	80	45	80		MTB-16260	
BT50-ETA-55080	100	55	80		MTB-20330	



● MAS403 / BT EXT Modular Oil Feed Type

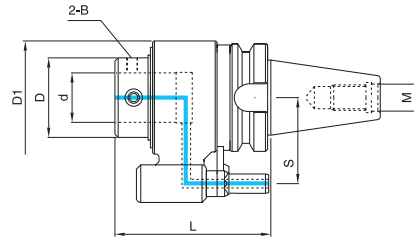
▶ BT-OME

Code No.	치수 Dimension(mm)				부품 Component	
	d	L	D	D1	M	B
BT40-OME-22090	22	90	50	78	M16	MTB-10145
BT40-OME-28095	28	95	50	78		MTB-12175
BT40-OME-36100	36	100	65	98		MTB-16225
BT50-OME-22105	22	105	50	78	M24	MTB-10145
BT50-OME-28105	28	105	50	78		MTB-12175
BT50-OME-36120	36	120	65	98		MTB-16225
BT50-OME-45120	45	120	80	115		MTB-16260

※ 수동 내부 급유형 절삭유 공급 홀더로, 특수 씬을 장착하여 누유없이 장시간 운전이 가능합니다. (Max. 1800RPM/138페이지참조)

※ It is a manual type internal oil hole holder with a special seal capable of long term operation without leakage. (Max. 1800RPM/refer to page 138)





● MAS403 / BT EXT Modular Auto Matic Type

▶ BT- OAE

Code No.	치수 Dimension(mm)						부품 Component
	d	L	D	D1	S	M	B
BT40-OAE-22110	22	110	55				MTB-10145
BT40-OAE-28115	28	115	55	80	65	M16	MTB-12175
BT40-OAE-36120	36	120	65				MTB-16225
BT50-OAE-22135	22	135	55				MTB-10145
BT50-OAE-28135	28	135	55	100	80	M24	MTB-12175
BT50-OAE-36145	36	145	65				MTB-16225
BT50-OAE-45145	45	145	80				MTB-16260

※ EXT 모듈타입을 사용하면 게이지라인에서의 거리가 짧고 원통 및 단면 구속으로 떨림을 최소화 할 수 있습니다.

※ 자동 툴체인지(ATC)가 가능한 툴홀더로, 사용 전에 위치결정핀(Position Pin) 높이와 각도를 맞추어 사용합니다. (139페이지)

※ 베어링과 내열, 내마모성이 우수한 씰(Seal)을 장착하여, 고속에서도 누유 없이 장시간 안정적인 운전이 가능합니다. (Max. 3,200RPM)

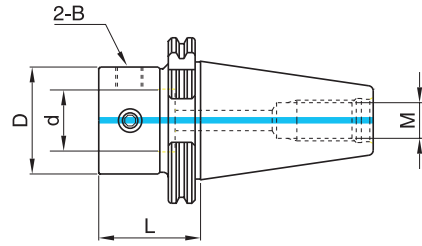
※ It is a tool holder capable of Automatic Tool Change (ATC). Adjust the height and angle of the Position Pin prior to use. (P.139)

※ It has a bearing and seal with outstanding heat-resistant and abrasion resistive properties, making it capable of stable operation for extended durations without leakage even in high speeds. (Max. 3,200RPM)



EXT MODULAR SYSTEM

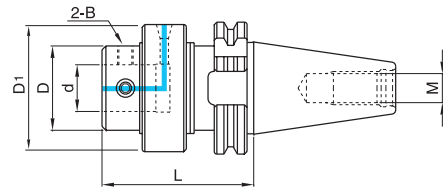
SK-ETA / SK-OME



● DIN69871 / SK EXT Standard Type

▶ SK-ETA

Code No.	치수 Dimension(mm)				부품 Component
	D	d	L	M	B
SK40-ETA-22045	40	22	45	M16	MTB-10145
SK40-ETA-28050	50	28	50		MTB-12175
SK40-ETA-36065	63	36	65		MTB-16225
SK50-ETA-22045	40	22	45	M24	MTB-10145
SK50-ETA-28050	50	28	50		MTB-12175
SK50-ETA-36060	63	36	60		MTB-16225
SK50-ETA-45060	80	45	60		MTB-16260



● DIN69871 / SK EXT Modular Oil Feed Type

▶ SK-OME

Code No.	치수 Dimension(mm)				부품 Component	
	d	L	D	D1	M	B
SK40-OME-22095	22	95	50	78	M16	MTB-10145
SK40-OME-28100	28	100	50	78		MTB-12175
SK40-OME-36105	36	105	65	98		MTB-16225
SK50-OME-22090	22	90	50	78	M24	MTB-10145
SK50-OME-28105	28	105	50	78		MTB-12175
SK50-OME-36105	36	105	65	98		MTB-16225
SK50-OME-45105	45	105	80	115		MTB-16260

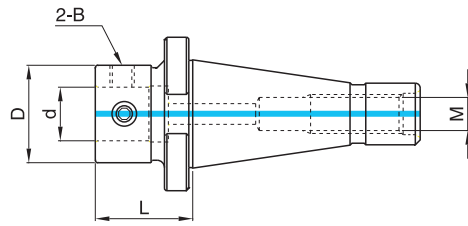
※ 수동 내부 급유형 절삭유 공급 홀더로, 특수 씬을 장착하여 누유없이 장시간 운전이 가능합니다. (Max. 1800RPM/138페이지참조)

※ It is a manual type internal oil hole holder with a special seal capable of long term operation without leakage. (Max. 1800RPM/refer to page 138)



EXT MODULAR SYSTEM

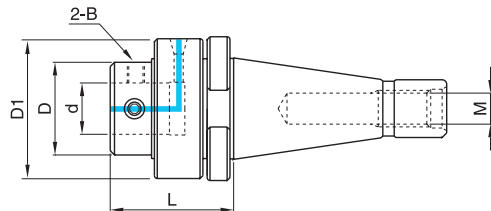
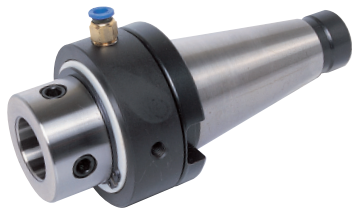
NT-ETA / NT-OME



● DIN2080 / NT EXT Standard Holder Type

▶ NT-ETA

Code No.	치수 Dimension(mm)				부품 Component
	D	d	L	M	
NT40-ETA-22040	40	22	40	5/8"-11UNC	MTB-10145
NT40-ETA-28045	50	28	45		MTB-12175
NT40-ETA-36065	63	36	65		MTB-16225
NT50-ETA-28055	50	28	55	1"-8UNC	MTB-12175
NT50-ETA-36060	63	36	60		MTB-16225
NT50-ETA-45060	80	45	60		MTB-16260
NT40-ETA-22040M	40	22	40	M16	MTB-10145
NT40-ETA-28045M	50	28	45		MTB-12175
NT40-ETA-36065M	63	36	65		MTB-16225
NT50-ETA-28055M	50	28	55	M24	MTB-12175
NT50-ETA-36060M	63	36	60		MTB-16225
NT50-ETA-45060M	80	45	60		MTB-16260



● DIN2080 / NT EXT Modular Oil Feed Type

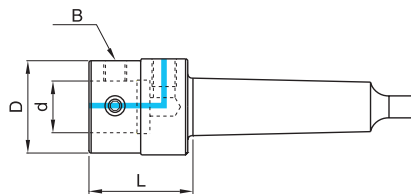
▶ NT-OME

Code No.	치수 Dimension(mm)				부품 Component	
	d	L	D	D1		
NT40-OME-22075	22	75	50	78	5/8"-11UNC	MTB-10145
NT40-OME-28080	28	80	50	78		MTB-12175
NT40-OME-36090	36	90	65	98		MTB-16225
NT50-OME-22080	22	80	50	78	1"-8UNC	MTB-10145
NT50-OME-28080	28	80	50	78		MTB-12175
NT50-OME-36090	36	90	65	98		MTB-16225
NT50-OME-45090	45	90	80	115	MTB-16260	
NT40-OME-22075M	22	75	50	78	M16	MTB-10145
NT40-OME-28080M	28	80	50	78		MTB-12175
NT40-OME-36090M	36	90	65	98		MTB-16225
NT50-OME-22080M	22	80	50	78	M24	MTB-10145
NT50-OME-28080M	28	80	50	78		MTB-12175
NT50-OME-36090M	36	90	65	98		MTB-16225
NT50-OME-45090M	45	90	80	115	MTB-16260	



EXT MODULAR SYSTEM

MT-ETA / MT-OME



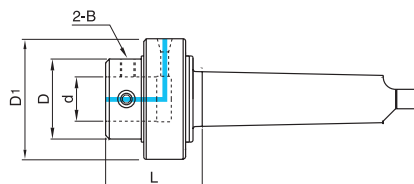
● DIN228B / MT EXT Standard Type

▶ MT-ETA

Code No.	치수 Dimension(mm)			부품 Component
	D	d	L	B
MT4-ETA-22045	40	22	45	MTB-10145
MT4-ETA-28060	50	28	60	MTB-12175
MT4-ETA-36065	63	36	65	MTB-16225
MT5-ETA-22045	40	22	45	MTB-10145
MT5-ETA-28060	50	28	60	MTB-12175
MT5-ETA-36065	63	36	65	MTB-16225
MT5-ETA-45075	80	45	75	MTB-16260
MT6-ETA-36065	63	36	65	MTB-16225
MT6-ETA-45075	80	45	75	MTB-16260

※ 코터홈이 있는 경우 별도 지정해 주시기 바랍니다.

※ If a COTTER HOME is present, please make a separate assignment.



● DIN228B / MT EXT Modular Oil Feed Type

▶ MT-OME

Code No.	치수 Dimension(mm)				부품 Component
	d	L	D	D1	B
MT4-OME-22065	22	65	50	78	MTB-10145
MT4-OME-28075	28	75	50	78	MTB-12175
MT4-OME-36080	36	80	65	98	MTB-16225
MT5-OME-22065	22	65	50	78	MTB-10145
MT5-OME-28075	28	75	50	78	MTB-12175
MT5-OME-36080	36	80	65	98	MTB-16225
MT5-OME-45085	45	85	80	115	MTB-16260
MT6-OME-22070	22	70	50	78	MTB-10145
MT6-OME-28075	28	75	50	78	MTB-12175
MT6-OME-36085	36	85	65	98	MTB-16225
MT6-OME-45085	45	85	80	115	MTB-16260

※ 수동 내부 급유형 절삭유 공급 홀더로, 특수 씬을 장착하여 누유없이 장시간 운전이 가능합니다. (Max. 1800RPM/138페이지참조)

※ It is a manual type internal oil hole holder with a special seal capable of long term operation without leakage. (Max. 1800RPM/refer to page 138)

