

10 PAIRING WITH INTERCOM

Pairing is **only required once** if you ride with the same person or group. Should you ride adhoc with other users, repeat the simple pairing procedure detailed below.

PAIRING OF CONTROL UNIT 1 & 2



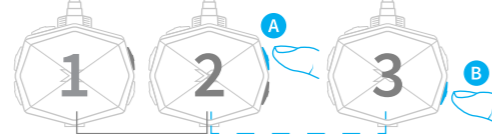
Always pair 2 control units at a time, keep away from other control units which are also pairing to avoid unsuccessful or difficult pairing situations.

- Power ON your control units.
- ALWAYS** clear previous pairing data by holding down A and B buttons together until the Red light flashes, & 'Intercom pairing cleared' is heard.
- Pairing between control units is always from "A" on one control unit to "B" on the other, for up to 4 control units.
- Press and hold button A (control unit 1), until Red and Blue lights flash alternately. 'Pairing' is heard
- Press and hold button B (control unit 2), until Red and Blue lights flash alternately. 'Pairing' is heard
- Press button A of control unit 1 once. Only Blue light of control unit 1 flashes & 'Searching' is heard. When the Blue light of control unit 2 also flashes, 'Pairing Successful' is heard. Both control units revert to flashing red light.

TO ACTIVATE/DEACTIVATE INTERCOM
Press either button A of control unit 1 OR button B of control unit 2 once, & 'Intercom Connected' is heard. To disconnect, press the same button twice.

IMPORTANT :
When pairing the control units, keep them away from other sets nearby which are also pairing. This may result in unsuccessful or wrong pairing.

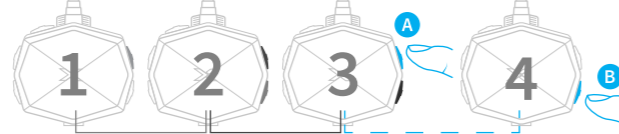
PAIRING OF CONTROL UNITS 2 & 3



- PAIRED : CONTROL UNITS 1 & 2 PAIRING : CONTROL UNITS 2 & 3
- Press and hold button A (control unit 2), until Red and Blue lights flash alternately. 'Pairing' is heard.
 - Press and hold button B (control unit 3), until Red and Blue lights flash alternately. 'Pairing' is heard.
 - Press button A of control unit 2 once. Only Blue light of control unit 2 flashes & 'Searching' is heard. When the Blue light of control unit 3 also flashes, 'Intercom Pairing Successful' is heard. Both control units revert to flashing Red light.

Repeat steps (a) to (c) if pairing is unsuccessful.
TO ACTIVATE INTERCOM : Press either button A of control unit 2 OR button B of control unit 3 once, & 'Intercom Connected' is heard.

PAIRING OF CONTROL UNITS 3 & 4

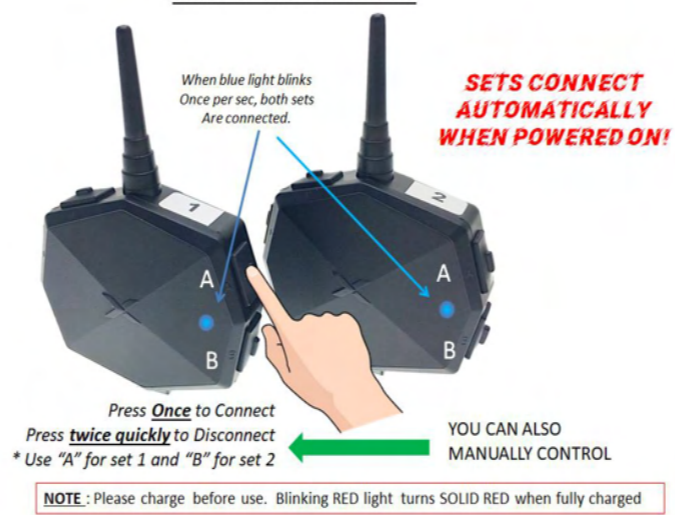


- PAIRED : CONTROL UNITS 1 & 2 PAIRED : CONTROL UNITS 2 & 3 PAIRING : CONTROL UNITS 3 & 4
- Press and hold button A (control unit 3), until Red and Blue lights flash alternately. 'Pairing' is heard.
 - Press and hold button B (control unit 4), until Red and Blue lights flash alternately. 'Pairing' is heard.
 - Press button A of control unit 3 once. Only Blue light of control unit 3 flashes & 'Searching' is heard. When the Blue light of control unit 4 also flashes, 'Intercom Pairing Successful' is heard. Both control units revert to flashing Red light.

Repeat steps (a) to (c) if pairing is unsuccessful.
TO ACTIVATE INTERCOM: Press either button A of control unit 3 OR button B of control unit 4 once, & 'Intercom Connected' is heard.

12 QUICK GUIDE : CONNECTING INTERCOM

ACTIVATING INTERCOM



14 HELP : MY MIC IS NOT WORKING

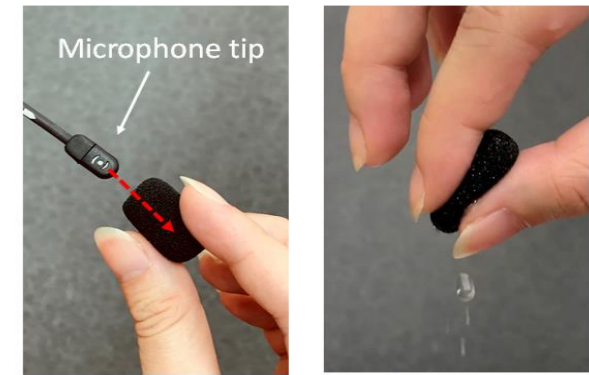
GETTING DIRT OUT FROM CONNECTORS



Dirt can get into your connectors when they get unplugged for charging. Issues such as not being able to hear your partner, crackling noises etc may arise. Simply use an air duster or lens duster to give a good blow to clear them out.

16 HELP : WET AFTER RIDING IN RAIN

REMOVING WATER FROM MICROPHONE COVER



- Do not squeeze microphone sponge cover when it is wet
- Gently remove and then squeeze to remove water
- Gently wipe microphone tip dry, then slide microphone sponge cover back into microphone tip

11 USING THE INTERCOM

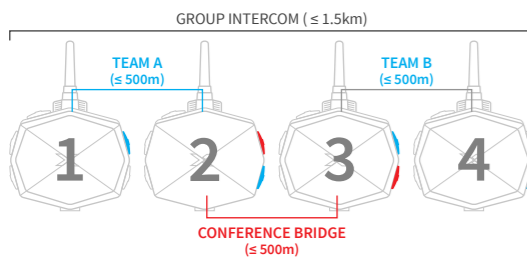
INTERCOM INDICATORS

- Single Blue light flash : Connected with 1 other control unit
- Double Blue light flash : Connected with 2 other control units

COMMUNICATING VIA INTERCOM

GROUP INTERCOM

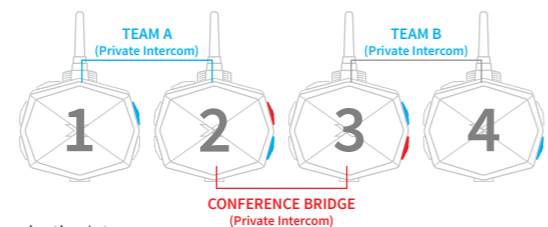
When intercom links have been established between the control units, riders can talk to each other anytime without the need to press any button, as long as they are both within range of up to 500m, and total range of up to 1.5km for 4 riders, between control unit 1 and control unit 4.



PRIVATE INTERCOM

Private Intercom can be carried out within the teams (Team A or Team B), and between the 2 forming the Conference Bridge.

For example:
Control unit 2 : Press button A to activate connection to control unit 3. Press button B to connect to control unit 1.



Terminating Intercom
For example:
To terminate intercom between control unit 2 and control unit 3 : Press button A on control unit 2 twice. You will hear a beep sound, and intercom with control unit 3 is terminated.

13 QUICK GUIDE : SINGLE-EAR HEADSET

SETTING UP THE HIDDEN MIC HEADSET



15 HELP : I AM UNABLE TO PAIR MY SETS

PERFORMING FACTORY RESET



- POWER OFF set, press and hold Power and "A" buttons together until you see the Red AND Blue lamp flash twice
- POWER OFF set normally. RED lamp lights up and goes OFF.
- You can visit <https://vimeo.com/224916439> for video.
- Pair the sets again.

PLEASE NOTE :
THIS SYSTEM DOES NOT SUPPORT MUSIC SHARING OR LISTENING TO MUSIC WHEN IN INTERCOM MODE.

For Frequently asked questions, visit <https://www.vertixglobal.com/apps/help-center>