

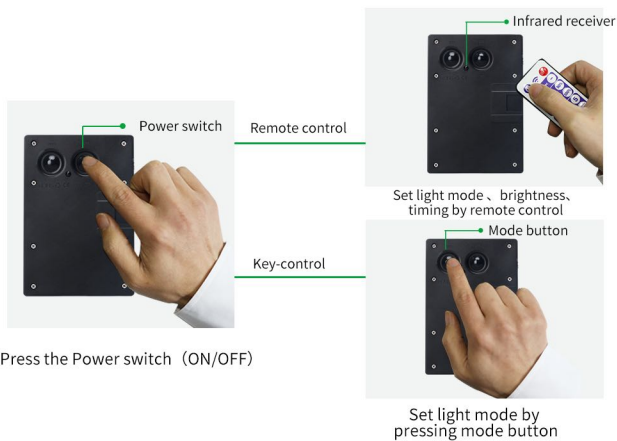
Supreme Solar Christmas Lights Manual

REMOTE SOLAR STRING LIGHTS INSTRUCTIONS

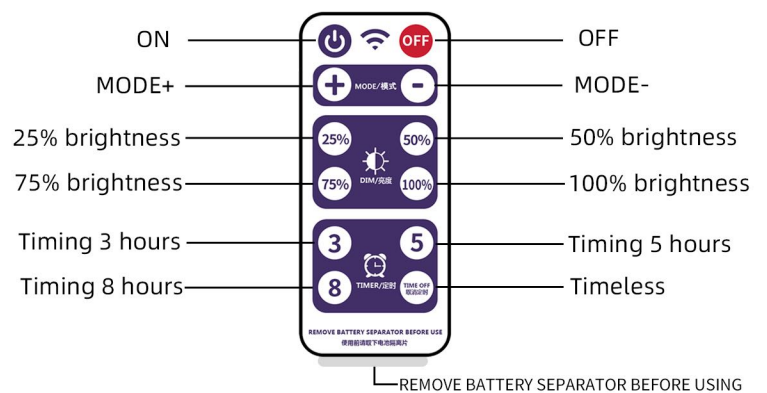
PRODUCT SPECIFICATION

SOLAR PANEL	5V 300MA
BATTERY	18650-3.7V 1200mAH
WORKTIME	8-36 hours if power is full
FUNCTION	brightness control, 8 modes adjust, timing
COLOR	<input type="checkbox"/> white <input type="checkbox"/> warm white <input type="checkbox"/> multi-color <input type="checkbox"/> others
LED	<input type="checkbox"/> 30LED <input type="checkbox"/> 50LED <input type="checkbox"/> 60LED <input type="checkbox"/> 100LED <input type="checkbox"/> 200LED
	<input type="checkbox"/> 300LED <input type="checkbox"/> 500LED <input type="checkbox"/> 1000LED <input type="checkbox"/> others
MODE	1.Combination 2.In waves 3.Sequential 4.Slo Glo 5.Chasing/Flash 6.Slow fade 7. Twinkle/Flash 8.Steady on

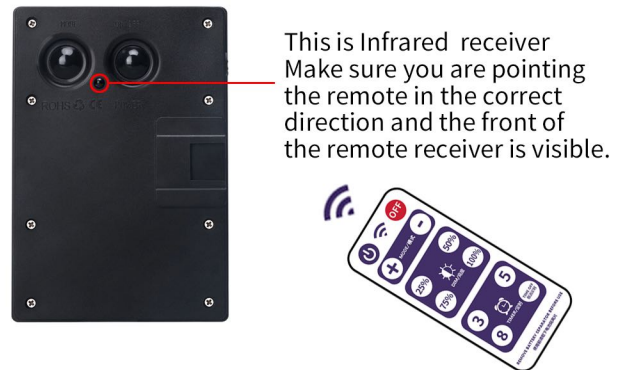
DIRECTION FOR USING



HOW TO USE REMOTE CONTROL



REMOTE CONTROL ATTENTIONS



Supreme Solar Christmas Lights Manual

INSTALLED ON THE GROUND



1. Take out the bracket and connect it



2. Combine the bracket with the controller



3. Install the product according to the picture

INSTALLED ON THE WALL



1. Punch holes in the wall according to the positioning holes



2. Tighten the screw and fix the bracket

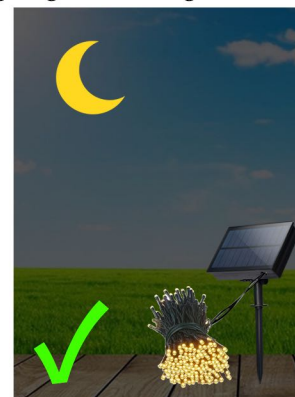


3. The best installation angle as the picture

ATTENTIONS



Charging during the day, please make sure nothing cover the solar panel, Whether or not it will affect the charging effect of solar energy, and affect the lighting time and brightness.



Make sure there is no strong light on the solar panel after dark, Whether or not it will enter charging mode, and the string lights will not work.