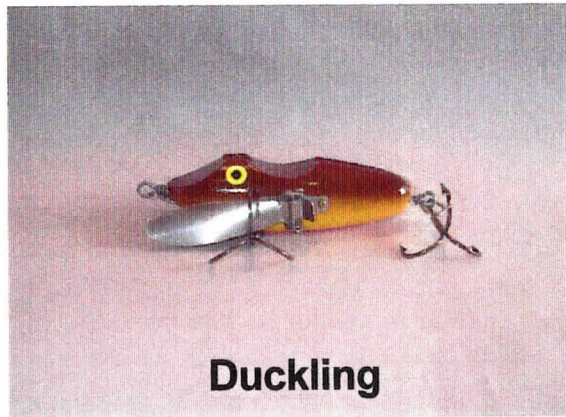


## Creepin' Tom - Solid and Jointed

Both the jointed and the solid Creepin' Tom's feature stainless steel through-wire construction and heavy duty stainless steel wings and brackets.

Hook size, 3/0.  
Weight, 1 1/2 oz.

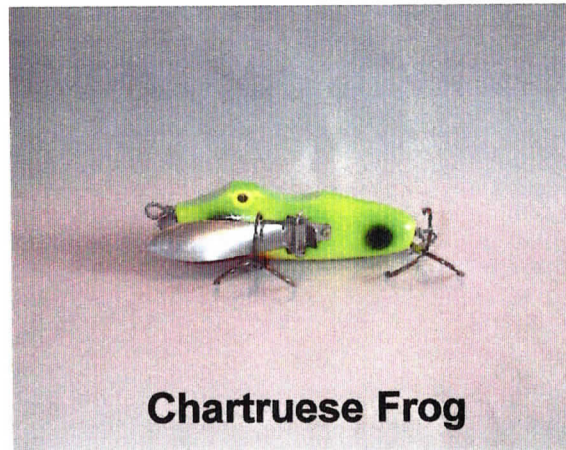
Available in these 6  
standard colors.



**Duckling**



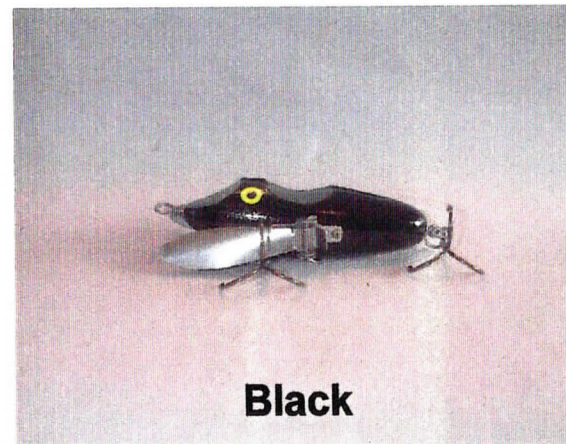
**Firefly**



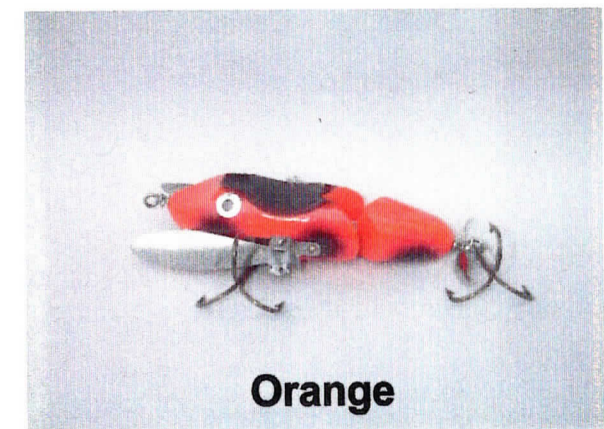
**Chartruese Frog**



**Firetail**



**Black**



**Orange**



## Loca-Motive and Mini Loca-Motive

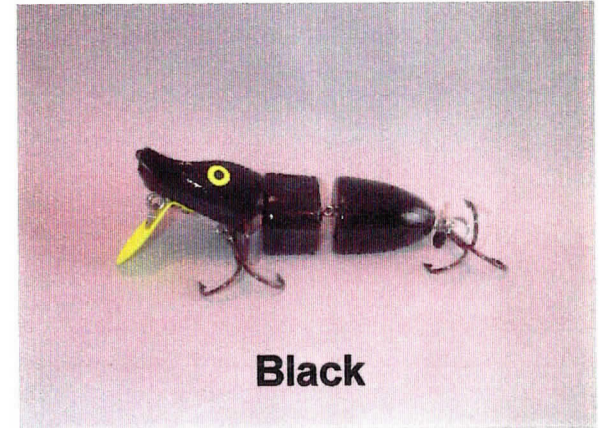
The Loca-Motive has a unique 3 piece body and oversized lip which gives it a snake-like action and causes it to clatter on retrieve.

It is available in an 8" standard model and a 6" mini model.

Available in these 6 standard colors.



**Chartreuse Lace**



**Black**



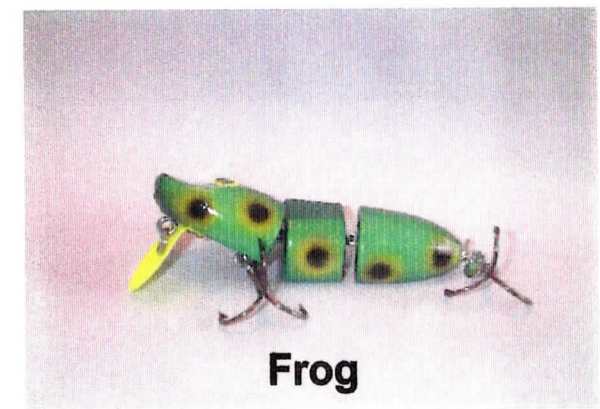
**Orange/Black**



**Baby Bass**



**Sunrise Lace**



**Frog**



# Cyclone

All new classic globe style body. We also use a brass propeller which produces a richer sound.

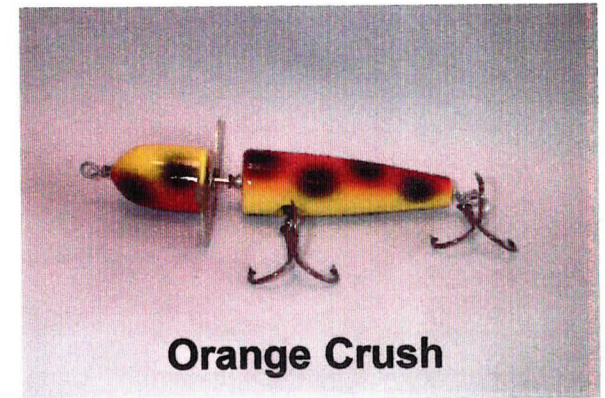
Slow to medium retrieve in calm to choppy water. Our most versatile bait.

Stainless steel through-wire construction with 3/0 hooks. Length, 6".

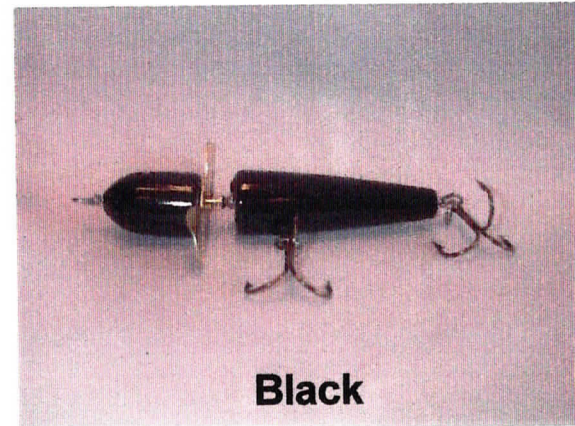
Available in these 6 standard colors.



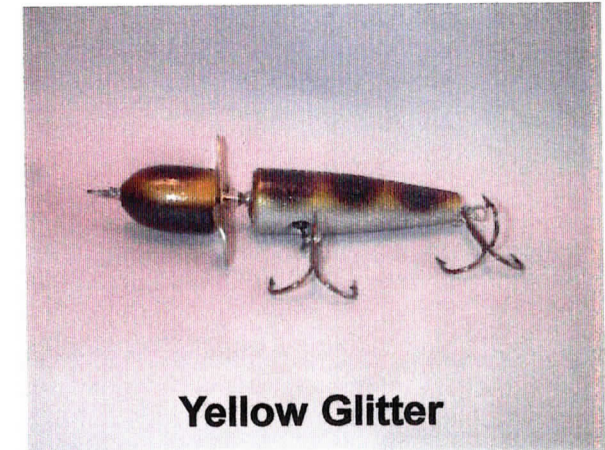
**Fire Tiger**



**Orange Crush**



**Black**



**Yellow Glitter**



**Black Magic**



**Fire Head**



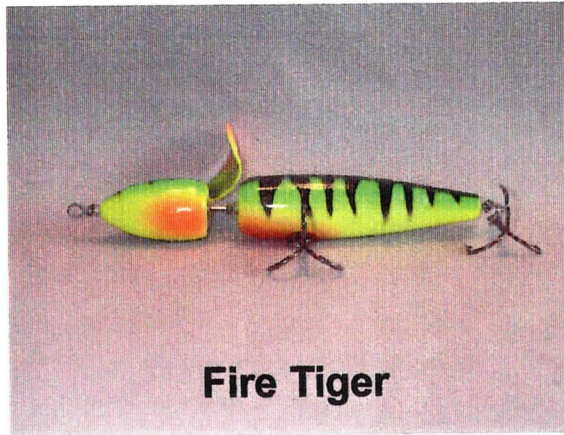
## Thunderhead and Thunderhead Jr.

The Thunderhead is a loud bait ideally suited for choppy to rough water. The head-mounted blade allows it to drive through rough water rather than blow out like tail blade baits.

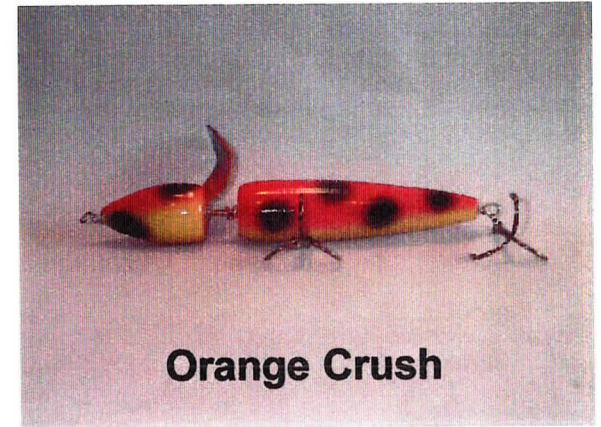
Stainless steel through-wire construction.

Available in the 8" standard and 6" Jr. models.

Available in these 6 standard colors.



**Fire Tiger**



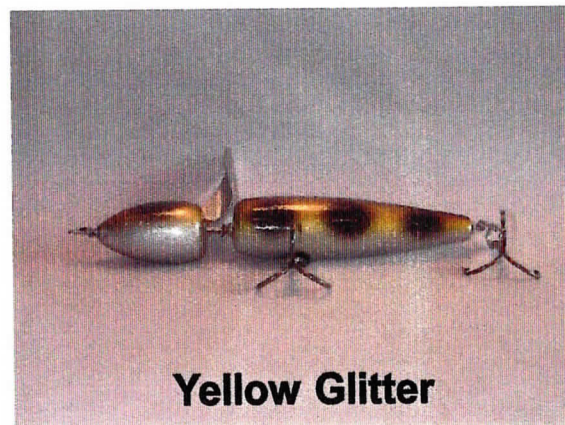
**Orange Crush**



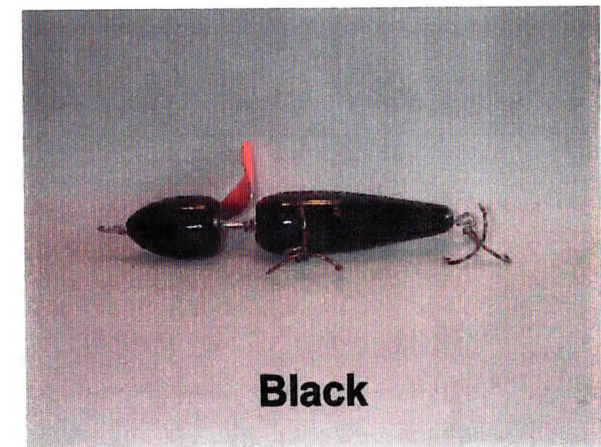
**Fire Head**



**Black Magic**



**Yellow Glitter**



**Black**



Date:

Ship To:



**TOPWATER COMPANY**

HC78 Box K17

Kelliher, MN 56650

Phone (218) 647-8227

Fax (218) 647-8152

## Dealer Order Form

### Loca-Motive - 8"

		Color Selection	Unit price	Total
		<b>Black</b>	<b>\$12.00</b>	
		<b>Copperhead</b>	<b>\$12.00</b>	
		<b>Sunrise Lace</b>	<b>\$12.00</b>	
		<b>Chartreuse Lace</b>	<b>\$12.00</b>	
		<b>Hothead</b>	<b>\$12.00</b>	
		<b>Blue Glitter</b>	<b>\$12.00</b>	
			<b>Total</b>	

### Loca-Mini - 6"

		Color Selection	Unit price	Total
		<b>Black</b>	<b>\$11.50</b>	
		<b>Copperhead</b>	<b>\$11.50</b>	
		<b>Sunrise Lace</b>	<b>\$11.50</b>	
		<b>Chartreuse Lace</b>	<b>\$11.50</b>	
		<b>Hothead</b>	<b>\$11.50</b>	
		<b>Blue Glitter</b>	<b>\$11.50</b>	
			<b>Total</b>	

### Top Dawg

		Color Selection	Unit price	Total
		<b>Black</b>	<b>\$13.00</b>	
		<b>Firetail</b>	<b>\$13.00</b>	
		<b>Chartreuse Frog</b>	<b>\$13.00</b>	
		<b>Orange</b>	<b>\$13.00</b>	
		<b>Duckling</b>	<b>\$13.00</b>	
		<b>Firefly</b>	<b>\$13.00</b>	
			<b>Total</b>	

Date:

Ship To:



**TOPWATER COMPANY**

HC78 Box K17

Kelliher, MN 56650

Phone (218) 647-8227

Fax (218) 647-8152

## Dealer Order Form

---

### 8" Model

	Thunderhead	Color Selection	Unit price	Total
		All Black	\$9.75	
		Orange Crush	\$9.75	
		Black Magic	\$9.75	
		Fire Head	\$9.75	
		Yellow Glitter	\$9.75	
		Fire Tiger	\$9.75	
		<b>TOTAL</b>		

### 6" Models

ThunderHead Jr.	Cyclone	Color Selection	Unit price	Total
		All Black	\$9.50	
		Orange Crush	\$9.50	
		Black Magic	\$9.50	
		Fire Head	\$9.50	
		Yellow Glitter	\$9.50	
		Fire Tiger	\$9.50	
		<b>TOTAL</b>		

### Creepin' Tom

		Color Selection	Unit price	Total
		All Black	\$12.00	
		Firefly	\$12.00	
		Chartreuse Frog	\$12.00	
		Firetail	\$12.00	
		Orange	\$12.00	
		Duckling	\$12.00	
		<b>TOTAL</b>		

# 2002 Dealer Pricing

SLAMMER TOPWATER CO  
HC 78 Box K17  
Kelliher, MN 56650

---

**TERMS: NET 30 DAYS**

**SHIPPING: FREE SHIPPING WITH ANY ORDER OVER \$500.**

	Full Size Thunderhead	\$9.75
	Thunderhead Junior	\$9.50
	Cyclone	\$9.50
	Loca-Motive	\$12.00
	Mini Loca-Motive	\$11.50
	Creepin' Tom	\$12.00
	Jointed Creepin' Tom	\$13.00
	Top Dawg	\$8.00
	Rich's Twister	\$8.50
	Slo Mo	\$9.00

---

The logo for Slammer Topwater Company, featuring the word "SLAMMER" in a bold, blocky, sans-serif font. A small graphic of a watercraft is integrated into the letter "M".

TOPWATER COMPANY

PHONE (218) 647-8227

FAX (218) 647-8152