

Performance

Lifting height	6957.0 mm
Rated capacity	3500 kg
Capacity (at max. height)	3000 kg
Capacity (at max. reach)	1500 kg
Max. reach	4002.0 mm
Crowding force	6200 daN

Weights

Weight (unladen)	7130 kg
------------------	---------

Traction

Standard tyres	Standard 405/70x20
1st gear / low range (40 km/h option)	6 (6) km/h
2nd gear / low range (40 km/h option)	16 (18) km/h
2nd gear / high range (40 km/h option)	30 (40) km/h

Drive System

Transmission	Hydrostatic with electronic regulation
Main drive	Hydrostatic motor with 2 speed gearbox

Engine

Make / Model	PERKINS / 1104D-44TA
Fuel	Diesel
Cooling	Liquid
Rated power (ISO 14396:2002) at 2200 RPM	100.0 HP
Rated power (ISO 14396:2002) at 2200 RPM	74.5 kW
Maximum torque at 1400 RPM	410.0 Nm
Number of cylinders	4
Displacement	4.40 L

Hydraulic System

Pump type	Gear pump with LS valve
Combined pump capacity	100.00 L/min
Pump capacity	100.00 L/min
Relief valve pressure setting	255.00 bar

Cycle Times

Lift time - no load	8.0 s
Lower time - no load	6.0 s
Telescope in time at max. reach - no load	6.7 s
Telescope in time at max. height - no load	6.7 s
Telescope out time at max. reach - no load	7.1 s
Telescope out time at max. height - no load	7.1 s

Brakes

Engine braking	Hydrostatic
Parking and emergency brake	Negative brake with hydraulic command

Fluid Capacities

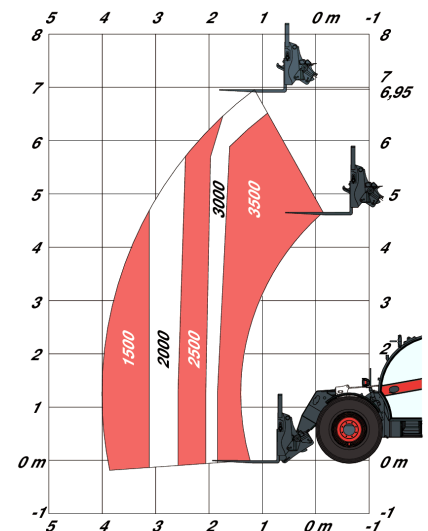
Engine oil	8.50 L
Fuel tank	138.00 L
Hydraulic reservoir	59.00 L

Environmental

Level of acoustic power (LWA)	106 dB(A)
-------------------------------	-----------

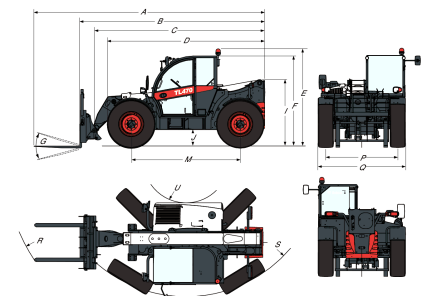
Load Charts

With forks and standard 405/70x20 tyres



Complies with stability test EN1459 annex B

Dimensions



(-)	900.0 mm	(L)	1356.0 mm
(A)	6074.0 mm	(M)	2870.0 mm
(B)	4869.0 mm	(N)	643.0 mm
(C)	4763.0 mm	(O)	1013.0 mm
(E)	2561.0 mm	(P)	1895.0 mm
(F)	2374.0 mm	(Q)	2300.0 mm
(G)	135.0°	(R)	5015.0 mm
(I)	1752.0 mm	(S)	3714.0 mm
(J)	430.0 mm	(U)	1092.0 mm