

**Performance**

Lifting height (Bob-Tach™)	5230.0 mm
Lifting height (Quick-Tach)	5210.0 mm
Rated capacity	2200 kg
Capacity (at max. height)	2200 kg
Capacity at max. reach (Bob-Tach™)	1000 kg
Capacity at max. reach (Quick-Tach)	950 kg
Max. reach (Bob-Tach™)	3010.0 mm
Max. reach (Quick-Tach)	3030.0 mm
Crowding force	2100 daN

**Weights**

Weight (unladen)	4695 kg
------------------	---------

**Traction**

Standard tyres	Mitas14x17.5
Low speed (forward/reverse)	7.0 km/h
High speed (forward/reverse)	25.0 km/h
Driving modes	Direct drive / soft drive

**Drive System**

Main drive	2-speed hydrostatic motor
Transmission	Hydrostatic with electronic regulation

**Engine**

Make / Model	KUBOTA / V3800-DI Turbo
Fuel	Diesel
Cooling	Liquid
Rated power (DIN 6271) at 2400 RPM	55.9 kW
Maximum torque at 1600 RPM	274.0 Nm
Number of cylinders	4
Displacement	3.80 L

**Hydraulic System**

Pump type	Gear pump with LS valve
Combined pump capacity	85.00 L/min
Working pressure	240.00 bar

**Cycle Times**

Lift time - no load	4.7 s
Lower time - no load	6.5 s
Telescope in time at max. reach - no load	4.2 s
Telescope in time at max. height - no load	4.2 s
Telescope out time at max. reach - no load	5.7 s
Telescope out time at max. height - no load	5.8 s

**Brakes**

Engine braking	Hydrostatic
Parking and emergency brake	Negative brake with hydraulic command

**Fluid Capacities**

Axles and reduction gears front / rear	8.9/5.6 L
Engine oil	12.00 L
Fuel tank	91.00 L
Hydraulic reservoir (hydraulic)	29.00 L

**Standard Features**

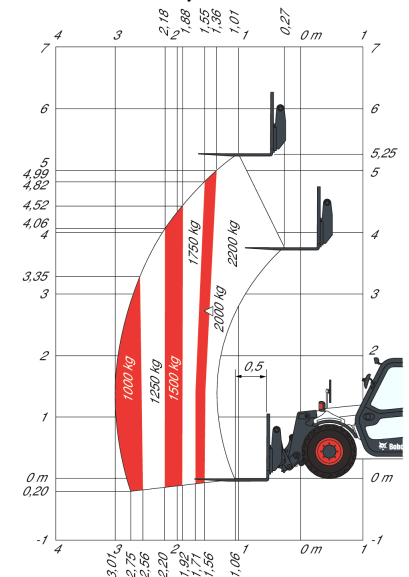
Aggravating Movements Arrester (AMA)	Right and left side mirrors
Hydrostatic transmission	Mudguards
ROPS/FOPS operator cab	Turbo-charged engine
Heating, demisting and ventilation	Quick-Tach
Front and rear washer/wipers	Front and rear work lights on cab
Seat with self-retracting seat belt	Creep function (or SMS: Speed management system)
Road lights	Four Mitas 14 x 17.5 tyres
Turn signals	

**Environmental**

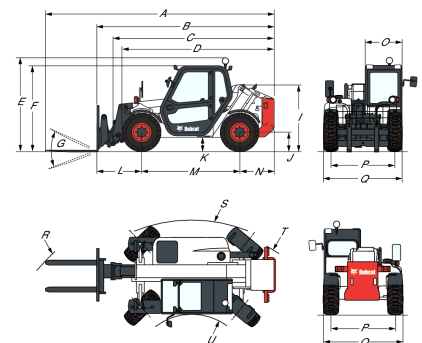
Level of acoustic power (LWA)	104 dB(A)
Whole body vibration (EN 13059)	1.60 ms <sup>-2</sup>

**Load Charts**

With forks and 14 x 17.5 tyres, with Bob-Tach™



Complies with stability test EN1459 Annex B

**Dimensions**


(-) 1175.0 mm	(J) 430.0 mm
(-) 845.0 mm	(K) 294.0 mm
(A) 5330.0 mm	(L) 1086.0 mm
(B) 4145.0 mm	(M) 2300.0 mm
(C) 3984.0 mm	(O) 860.0 mm
(C) 4000.0 mm	(P) 1485.0 mm
(E) 2185.0 mm	(Q) 1840.0 mm
(F) 1985.0 mm	(R) 4280.0 mm
(G) 148°	(S) 3170.0 mm
(I) 1553.0 mm	(U) 1500.0 mm

**Options**

Back up alarm