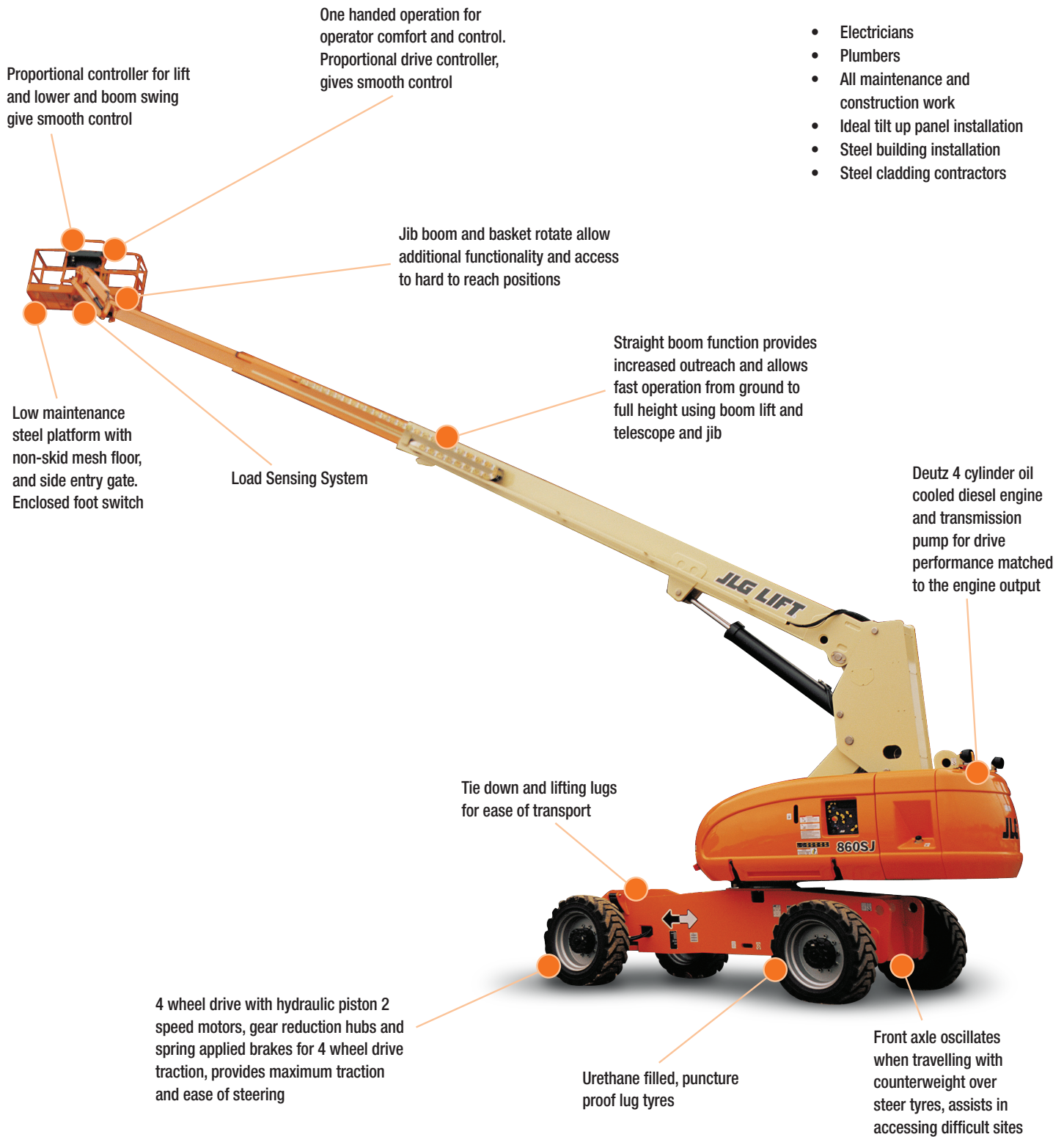


860SJ Telescopic Boom Lift



Proportional controller for lift and lower and boom swing give smooth control

One handed operation for operator comfort and control. Proportional drive controller, gives smooth control

Jib boom and basket rotate allow additional functionality and access to hard to reach positions

Low maintenance steel platform with non-skid mesh floor, and side entry gate. Enclosed foot switch

Load Sensing System

Straight boom function provides increased outreach and allows fast operation from ground to full height using boom lift and telescope and jib

Deutz 4 cylinder oil cooled diesel engine and transmission pump for drive performance matched to the engine output

Tie down and lifting lugs for ease of transport

4 wheel drive with hydraulic piston 2 speed motors, gear reduction hubs and spring applied brakes for 4 wheel drive traction, provides maximum traction and ease of steering

Urethane filled, puncture proof lug tyres

Front axle oscillates when travelling with counterweight over steer tyres, assists in accessing difficult sites

APPLICATIONS

- Electricians
- Plumbers
- All maintenance and construction work
- Ideal tilt up panel installation
- Steel building installation
- Steel cladding contractors

860SJ Telescopic Boom Lift



QUESTIONS TO ASK

- What are the ground conditions in the work area?
- What are the site conditions travelling around the site?
- What is the working height needed for the job?
- What is the outreach required for the job?
- Do you need an extension lead outlet in the platform?
- Will an inbuilt Miller 5.5kVA generator make the job easier?

KEY SELLING POINTS

- Smooth control, proportional hydraulic 4 wheel drive, with two speed ranges
- Proportional lift and swing controls at the platform for fast functionality
- Oscillating front steer axle with the boom within 10 degrees of centre, assists 4 wheel drive traction
- Jib boom and basket rotate
- Cylinder boots protect cylinder rods from overspray and contaminants
- Large lug pattern urethane filled tyres
- Multi axis 4 degree level sensor
- Plug in JLG analyser at platform and base to indicate system functions for servicing and adjustment
- Deutz Engine D2011 L04. High speed, 4 cylinder, liquid (oil cooled), 48.5kW engine pre-glow and post-glow feature reduces emissions

SPECIFICATIONS

Performance:

Platform Height (max.)	26.21m
Working Height	28.21m
Platform Rotation Angle	180°
Jib Raise Angle	70°
Jib Lower Angle	60°
Jib Articulation Range	130°
Maximum Horizontal Outreach	22.86m
Lift Time	56-73 sec
Lower Time	56-73 sec
Platform Capacity	230kg
Slewing Angle	360°
Continuous Slew	Yes

Dimensions:

Stowed Length	12.19m
Stowed Height	3.05m
Overall Width	2.49m
Wheelbase	3.05m
Ground Clearance	0.30m
Platform Width	2.44m
Platform Length	0.91m
Overall Jib Length	1.83m
Tailswing	1.42m
Axle Oscillation Standard	Std

Power:

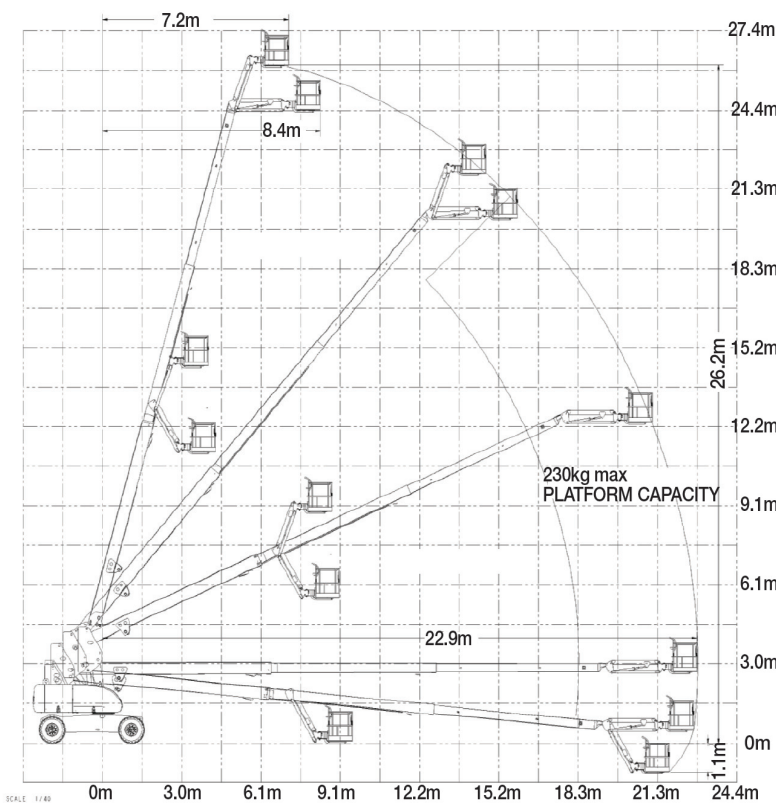
Power Source	Diesel
Engine Make	Deutz
Engine Model	D2011 L04
Engine Power	48kW
Genset	5.5kVA Miller
DC Voltage	12V
DC Power	1000CCA
Auxiliary Power	12V Pump

Travel:

Tyre Size	15-625
Tyre Type	Urethane Filled
Inside Turn Radius	3.66m
Outside Turn Radius	6.86m
Drive Speed Elevated	0.8km/h
Gradeability with 4WD	45%
Drive Speed - 4WD	5.6km/h
Maximum Ground Bearing Pressure	5.69kg/cm ²

Weights and Capabilities:

Fuel Tank Capacity	117.35 Ltr
Hydraulic Tank Capacity	181.7 Ltr
Operating Weight	17,200kg



SCALE 1/40