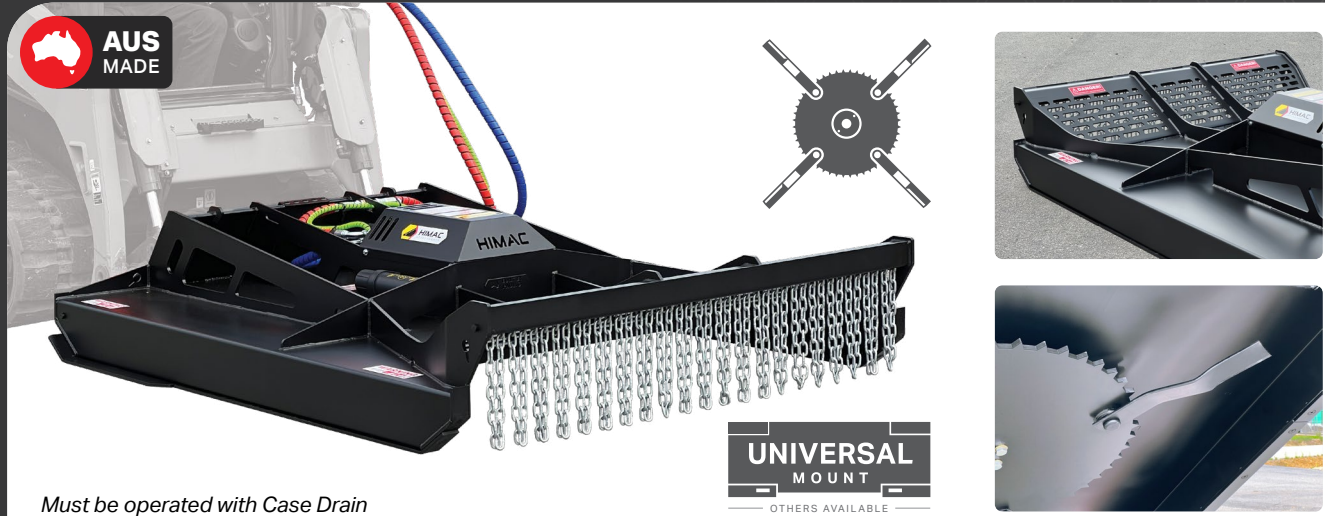


# Open Front Slasher

40+ HP SKID STEER



Must be operated with Case Drain

FEATURES

- » Reinforced open design, great for large volume pest plants like Lantana
- » Extreme duty serrated 4 blade carrier
- » Extra wide replaceable bolt-on skids
- » Hydraulic run down protection

CUTTING CAPACITY

**4" Diameter**

MAX CUTTING WIDTH

**1800mm**

SCAN FOR MORE INFO



CODE	DESCRIPTION	CUT WIDTH	OVERALL WIDTH	FLOW RANGE	WEIGHT	PRICING
SLF15UNIVL	5 ft (60") Open Front Slasher	1500 mm	1690 mm	40 - 95 LPM	525 kg	<b>GET QUOTE</b>
SLF16UNIVL	5.5 ft (63") Open Front Slasher	1600 mm	1790 mm	45 - 120 LPM	575 kg	
SLF18UNIVL	6 ft (72") Open Front Slasher	1800 mm	1990 mm	50 - 110 LPM	635 kg	
SLF18HFUNIVL	6 ft (72") Open Front Slasher - High Flow			111 - 130 LPM	635 kg	
BLADESL	Replacement Slasher Blade					
BOLTSL	Replacement Bolt for Slasher Blade					



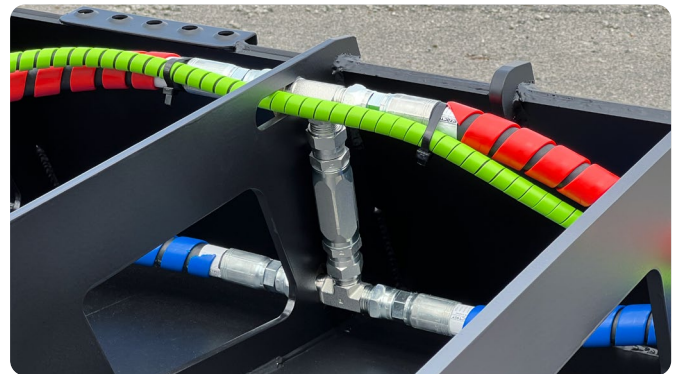
Hard Work Made Easy

1800 888 114

himac.com.au

# Open Front Slasher

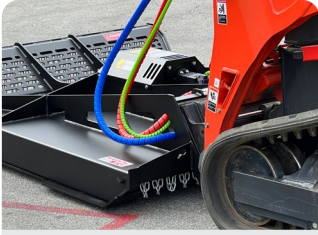
GALLERY





# Open Front Slasher

## FEATURES



Increased crowd for safer operation, inspection and servicing



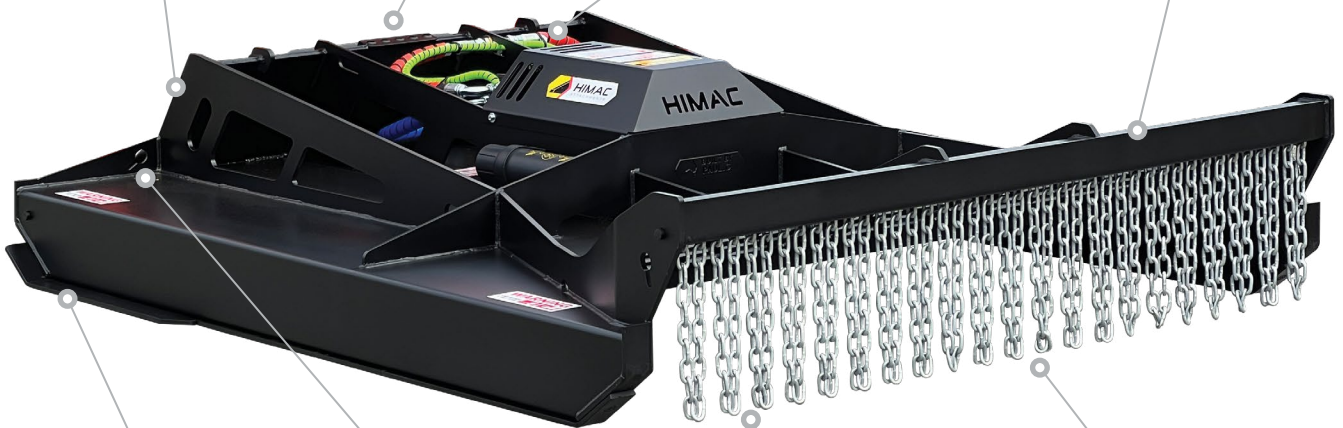
Rear fork pockets to ensure safe loading and unloading of slasher



Hydraulic run down protection - anti-cavitation valve



Reinforced open design for large volume slashing



Extra wide replaceable bolt-on skids increase flotation across terrain



4 built-in tie down points for quick and easy transportation

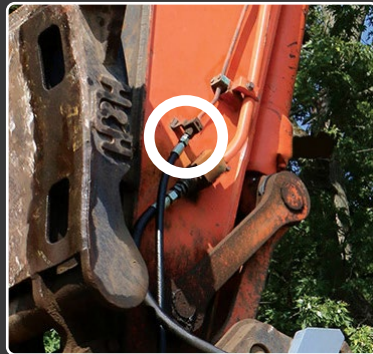


Serrated round blade carrier with increased mass and balance for smoother cut



Forged heavy duty blade bolts, larger than the industry standard

# Case Drain Lines



## Identifying your case drain line

These images show the case drain port on skid steer and excavator models



## What is a case drain line?

All Himak hydraulic attachments that operate at high pressure / high speed require a **case drain line (CDL)** to be fitted. Sometimes referred to as a third line, the CDL will relieve any excess pressure in the hydraulic motor casing and drain it back to the reservoir via a hose plumbed directly to the hydraulic tank.

Without a properly installed CDL, the extra pressure could blow a seal (extrude) which will in almost all cases irreparably damage the hydraulic motor, whilst also putting the host machine at risk of oil contamination.

A CDL can also increase the efficiency of your hydraulic system as it will lower the back pressure on the tank line. Each Himak CDL is supplied with a 3/8" Female Flat Face Coupling as standard (other standard couplings available on request).

## How important is a case drain line?

Having a CDL fitted and operating properly is extremely important. Not only is it important for the longevity of your attachment, but will protect your machine's internal hydraulic system from contamination.

All Himak Attachments supplied with a case drain hose **MUST** be operated with the case drain hose properly installed to be eligible for warranty.

## I don't have a case drain line on my machine - can I still buy a Himak Slasher?

Case drain lines are fitted from factory on almost all modern machines. Some older models won't have a CDL fitted to them. Luckily a CDL can be easily retro-fitted to your machine by your local hydraulic supplier.

A CDL can be routed parallel to existing feed and return lines on your machine arms and directly back to the reservoir (it is extremely important that the CDL feeds directly back to the reservoir on its own dedicated line, NOT plumbed back into the return hose).

The CDL should be connected to the reservoir through dedicated ports. This port would ideally be connected to a drop-pipe inside the reservoir that extends below minimum fluid level.

## Not sure if you have a case drain line on your machine?

Contact our knowledgeable and friendly team at **1800 888 114**.




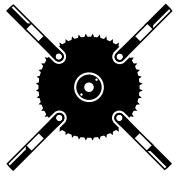
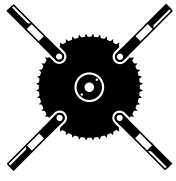
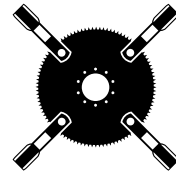


Hard Work Made Easy

1800 888 114

himac.com.au

# Slasher Application Guide

	EXTREME DUTY	OPEN FRONT	BRUSH CUTTER
Design			
Blade Carrier			
Carrier Thickness	<b>16 mm</b> Solid Circular Carrier	<b>16 mm</b> Solid Circular Carrier	<b>20 mm</b> Solid Circular Carrier
Carrier Serrated?	✓	✓	✓
Blades	<b>4 Blade</b> Regular	<b>4 Blade</b> Regular	<b>4 Blade</b> Double edge
Deck Type	<b>Reinforced</b> 6 mm thick	<b>Reinforced</b> 6 mm thick	<b>Reinforced</b> 6 mm thick
Push Bar?	✗	✓	✓
Open Front?	✗	✓	<b>Optional</b>
Max Cut Capacity Thickness of growth	<b>3.5 inch</b> 89 mm	<b>4 inch</b> 101 mm	<b>5 inch</b> 127 mm
Flow Suitability	<b>40 - 130 LPM</b>	<b>40 - 130 LPM</b>	<b>90 - 160 LPM</b>
Cutting Widths	1500 mm   1600 mm   1830 mm	1500 mm   1600 mm   1830 mm	<b>1830 mm</b>
Grass	<b>Great</b>	<b>Great</b>	<b>OK</b>
Scrub	<b>Great</b>	<b>Great</b>	<b>Great</b>
Dense Bush	<b>Good</b>	<b>Great</b>	<b>Great</b>
Small - Med Trees	<b>Good</b>	<b>Good</b>	<b>Great</b>
Thick Regrowth	<b>OK</b>	<b>Good</b>	<b>Great</b>