

G1315A

Self Test

Passed

US72101688
A.06.50[003]
DAD

The DAD self-test runs a series of individual tests, and evaluates the results automatically.

Started at 2/12/2019 12:41:34 PM by Dell-PC\Dell on DELL-PC using Agilent Lab Advisor - Version B.02.11 [292] - Basic

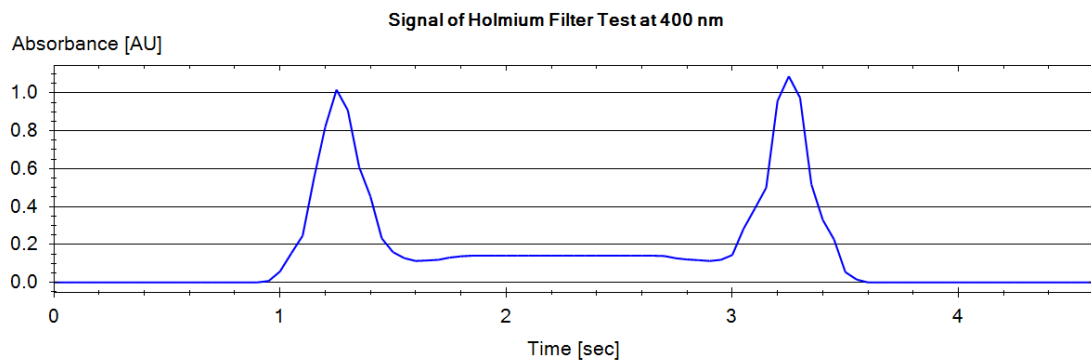
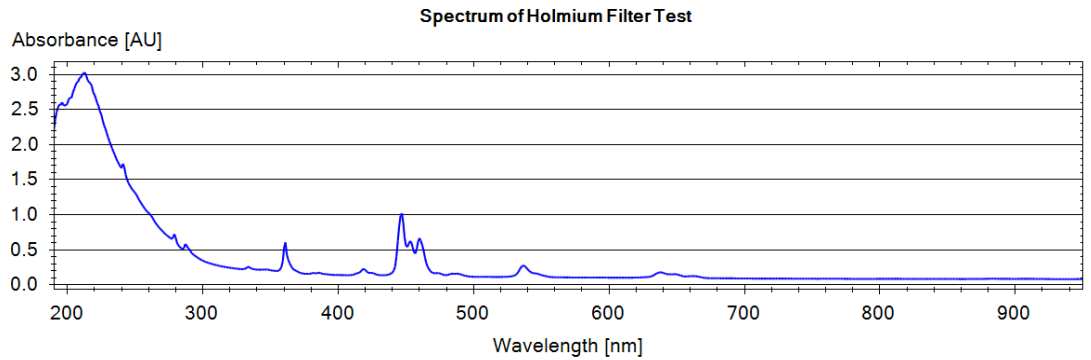
Results

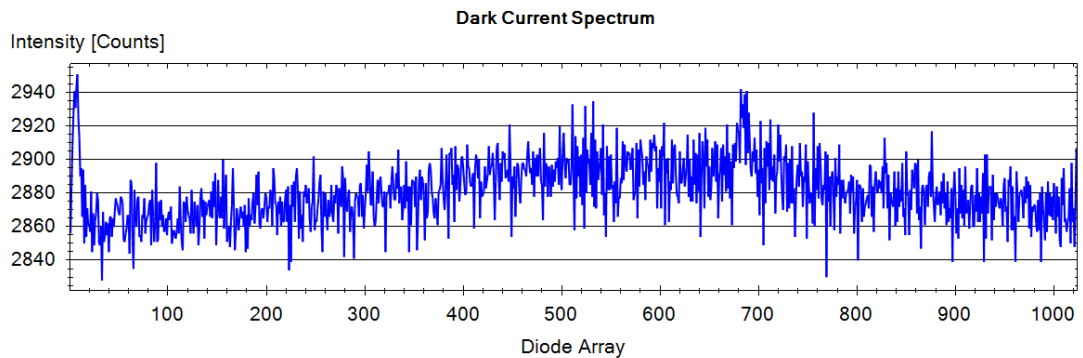
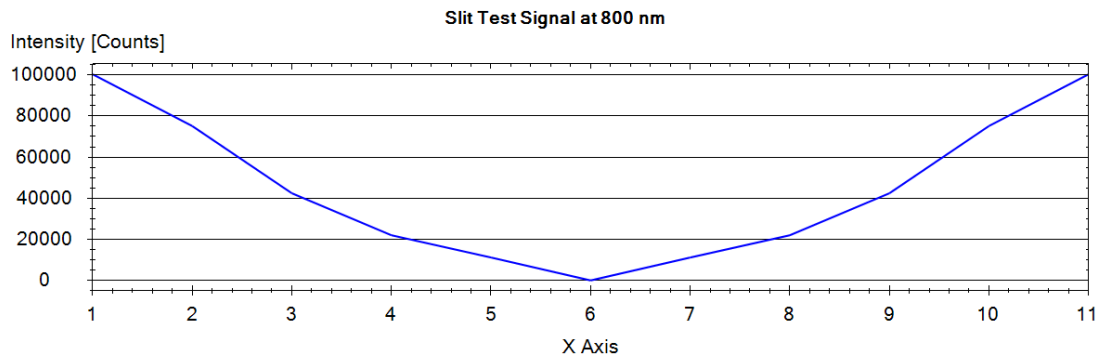
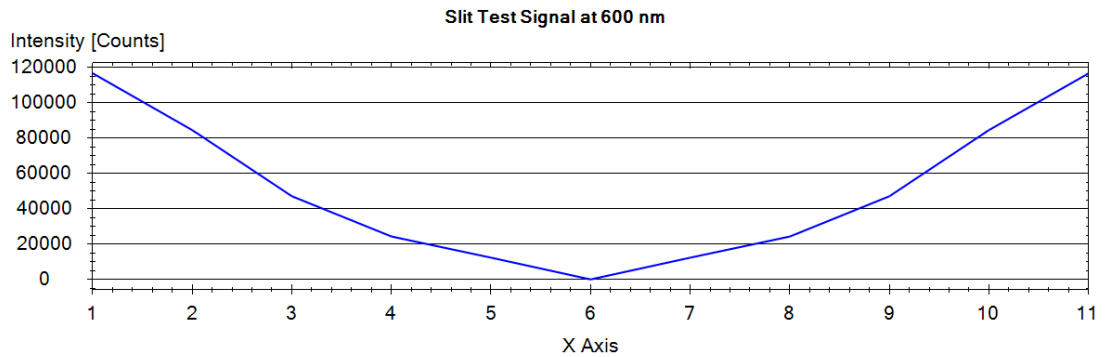
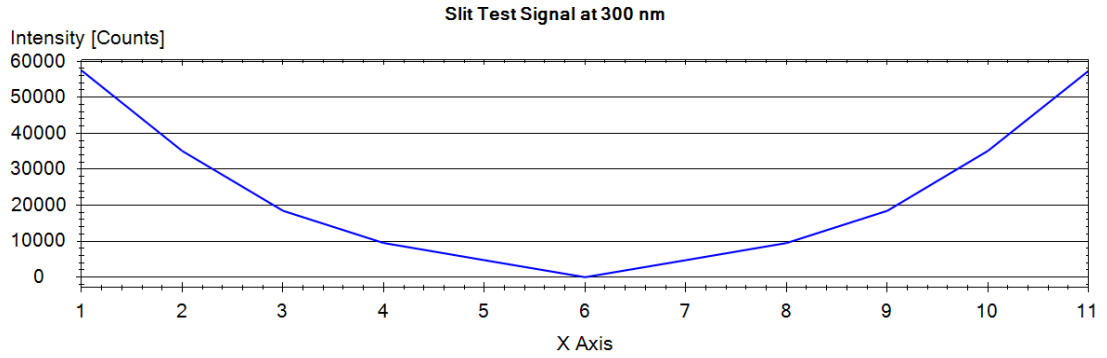
Item	Value	Result
UV Lamp On-Time	0.32 h	
<i>Minimum Lamp On-Time</i>	<i>0.17 h</i>	Passed
Accumulated Vis Lamp Burn Time	3060.74 h	Done
Vis Lamp On-Time	0.32 h	
<i>Minimum Lamp On-Time</i>	<i>0.17 h</i>	Passed
Holmium Filter Absorbance at 400 nm	0.14 AU	
<i>Filter Test Limit</i>	<i>0.005 ... 0.5 AU</i>	Passed
Slit Test Result	1.05	
<i>Slit Test Limit</i>	<i>0.7 ... 1.3</i>	Passed
Dark Current Minimum	2828 Counts	
<i>Dark Current Range</i>	<i>0 ... 12000 Counts</i>	Passed
Dark Current Maximum	2951 Counts	
<i>Dark Current Range</i>	<i>0 ... 12000 Counts</i>	Passed
Lowest Intensity in Range 190 - 220 nm	20718 Counts	
<i>Lowest Intensity in Range 190 - 220 nm</i>	<i>2000 ... 65000 Counts</i>	Passed
Lowest Intensity in Range 221 - 350 nm	35557 Counts	
<i>Lowest Intensity in Range 221 - 350 nm</i>	<i>5000 ... 65000 Counts</i>	Passed
Lowest Intensity in Range 351 - 500 nm	16533 Counts	
<i>Lowest Intensity in Range 351 - 500 nm</i>	<i>2000 ... 65000 Counts</i>	Passed
Lowest Intensity in Range 501 - 950 nm	34168 Counts	
<i>Lowest Intensity in Range 501 - 950 nm</i>	<i>4000 ... 65000 Counts</i>	Passed
Highest Intensity in Range 190 - 350 nm	123804 Counts	
<i>Highest Intensity in Range 190 - 350 nm</i>	<i>2000 ... 450000 Counts</i>	Passed
Highest Intensity in Range 700 - 950 nm	108704 Counts	
<i>Highest Intensity in Range 700 - 950 nm</i>	<i>2000 ... 300000 Counts</i>	Passed
Highest Intensity for D2 Alpha Line (600 - 700 nm)	270563 Counts	
<i>Highest Intensity for D2 Alpha Line</i>	<i>2000 ... 1200000 Counts</i>	Passed
D2 Alpha Line Deviation	-0.126 nm	
<i>WL Calibration Limit for Alpha Line</i>	<i>-0.5 ... 0.5 nm</i>	Passed

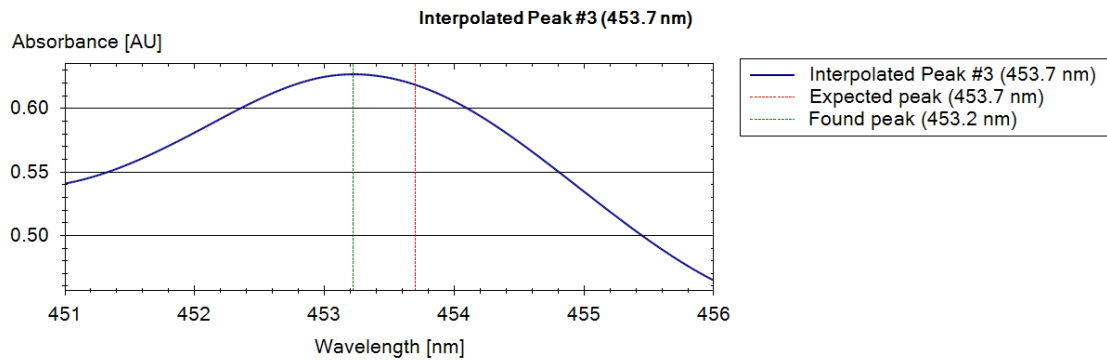
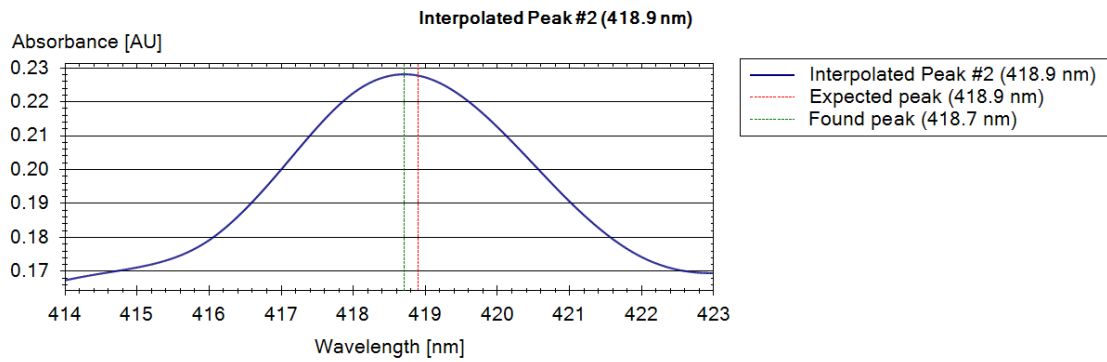
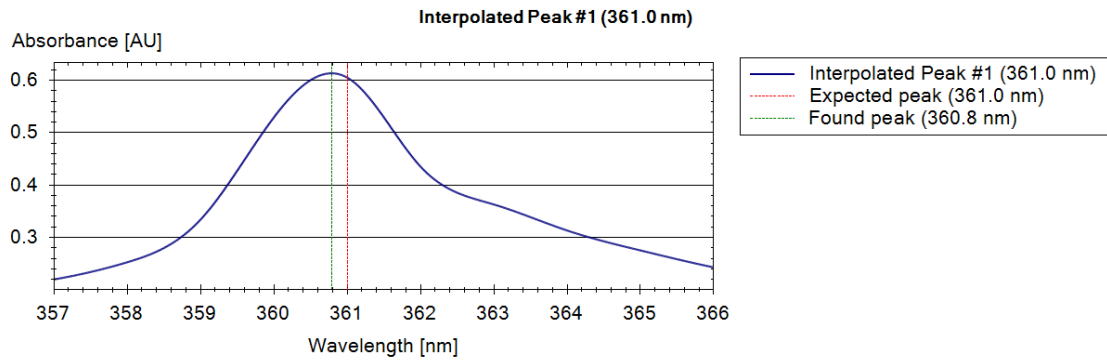
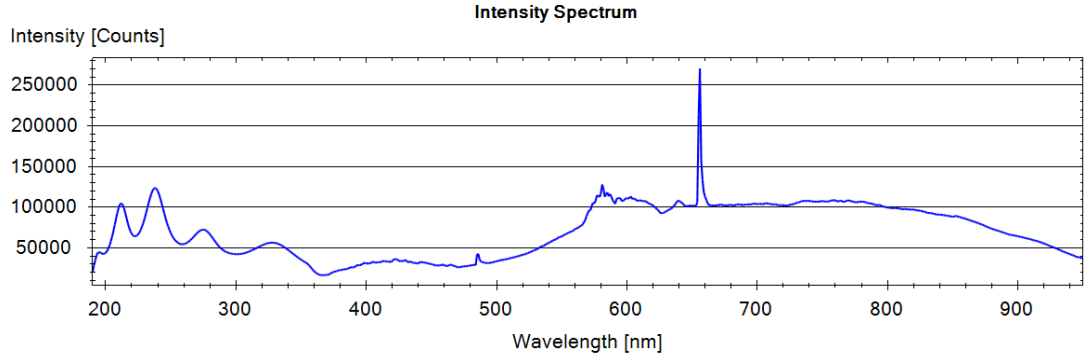
Item	Value	Result
D2 Beta Line Deviation	-0.103 nm	
<i>WL Calibration Limit for Beta Line</i>	<i>-0.5 ... 0.5 nm</i>	Passed
D2 Alpha Line	655.974 nm	Done
D2 Beta Line	485.897 nm	Done
Holmium Deviation to 361.0 nm	-0.21 nm	
<i>Holmium Deviation Limit</i>	<i>-1 ... 1 nm</i>	Passed
Holmium Deviation to 418.9 nm	-0.19 nm	
<i>Holmium Deviation Limit</i>	<i>-1 ... 1 nm</i>	Passed
Holmium Deviation to 453.7 nm	-0.48 nm	
<i>Holmium Deviation Limit</i>	<i>-1 ... 1 nm</i>	Passed
Holmium Deviation to 536.7 nm	0.10 nm	
<i>Holmium Deviation Limit</i>	<i>-1 ... 1 nm</i>	Passed
Spectral Flatness	0.0004 AU	
<i>Spectral Flatness Test Limit</i>	<i>0.002 AU</i>	Passed
Signal Noise value at 254 nm (UV)	0.018 mAU	
<i>Maximum Allowed Noise</i>	<i>0.02 mAU</i>	Passed

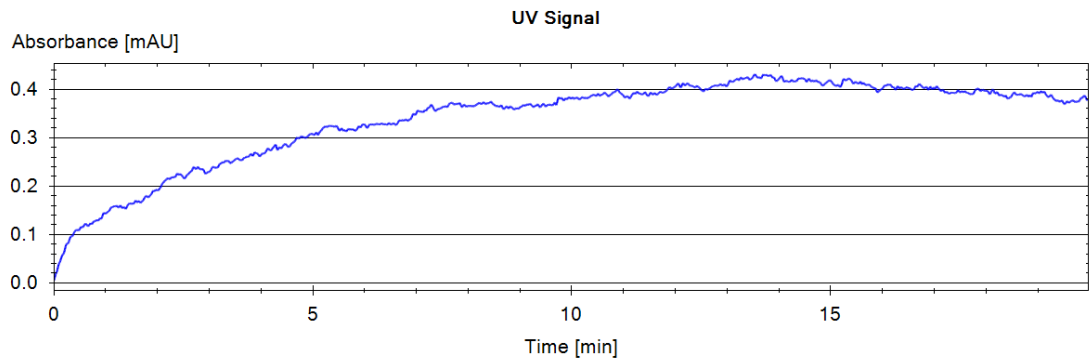
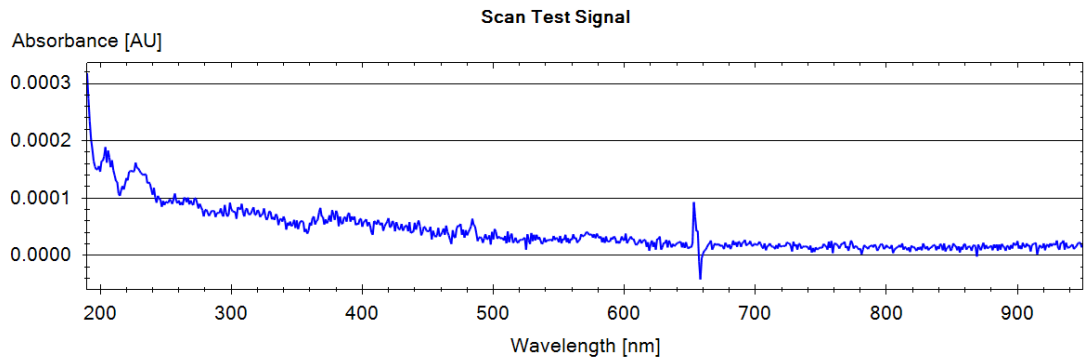
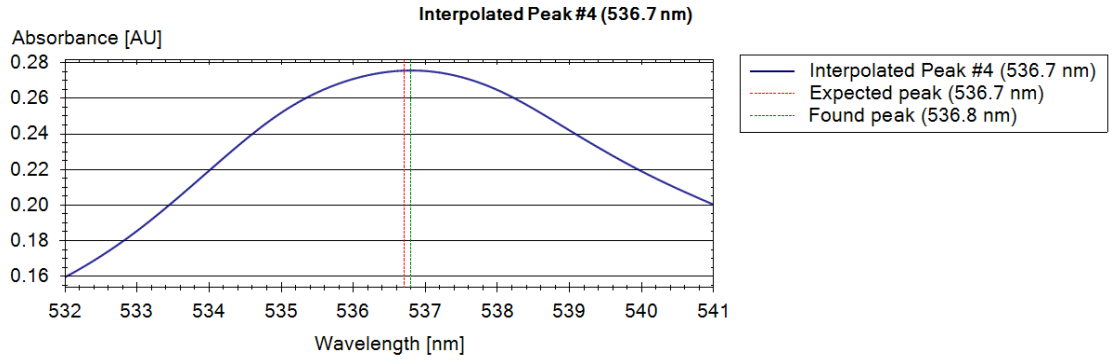
Finished at 2/12/2019 1:06:44 PM

Signals









Signature: