

# SWITCH® RGB HELMET LIGHT



Operating and Maintenance Instructions

## English

### Battery Installation

See Figure 1

- (2) CR2016 Coin Cells - 6V

Princeton Tec cares about the environment and recommends recycling batteries. For more information about battery recycling, please go to: [batteryrecycling.com](http://batteryrecycling.com) To install the batteries, rotate light unit out of base. Lift tab of battery door on the underside of light unit to expose coin cell(s)

Install coin cell(s) batteries with the (+) positive side facing up. Improper installation of the batteries will damage the light and void the warranty.

Replace the battery door with the lift tab properly aligned with lift tab slot of the housing. Press door firmly in place making sure it is all the way seated in place.

### WARNING ⚠

Never mix fresh and used batteries. Never mix different battery brands or chemistry types.

Always remove drained batteries immediately.

Remove batteries during long periods of storage.

### Switch Operation

**Switch RGB (White mode version). See Figure 2a**

Starts in color mode

- Press 1x
- Press 2x
- Press 3x
- Press & Hold in color mode
- Next Press
- Press & Hold 5s in off

- Color Low**
- Color High**
- Off**
- White High**
- Off**
- Programming mode**

**Switch RGBIR (IR mode version). See Figure 2b**

Starts in IR mode

- Press 1x
- Press 2x
- Press 3x
- Press & Hold in IR mode
- Next Press
- Press & Hold 5s in off

- IR Low**
- IR High**
- Off**
- Color High**
- Off**
- Programming mode**

### Programming Mode

See Figure 3

1. The Switch RGB ships with red light selected
2. From off, press and hold for 5 seconds to enter programming mode
3. When in programming mode, click to activate the desired color (Red, Blue, or Green)
4. Press and hold for 5 seconds to exit programming mode and save changes

### Troubleshooting

If the Switch RGB fails to light:

- Check the batteries for proper installation.
- Replace batteries if proper installation is confirmed.
- This light has been designed to be waterresistant. Check the light for water contamination on the circuit board. The light will resume normal operation once any water is shaken or blown out and the light is left open until completely dry. If the light has been contaminated with salt water, flush the unit with fresh water and dry as described above.

### USA– International 1-Year Warranty

WARRANTY – Princeton Tec warrants this product to be free from defects in workmanship and materials under normal use for one year. This warranty covers all of the component parts of the product except batteries. This warranty does not cover deterioration due to normal wear or damage due to misuse, alteration, negligence, accidents, or unauthorized repair. Princeton Tec will repair or replace parts which are defective in workmanship or materials. Your authorized Princeton Tec Dealer and Princeton Tec are the only facilities authorized to repair the product. After (3) unsuccessful attempts (within the warranty

period) to repair the product, you have the right to elect replacement of the product or a refund of the purchase price less allowance for use of the product. NO INCIDENTAL OR CONSEQUENTIAL DAMAGES ARE INCLUDED IN THIS WARRANTY. (Some states do not allow the exclusion or limitation of incidental or consequential damages, so the above limitations or exclusions may not apply to you.) This warranty gives you specific legal rights, and you may also have other rights which vary from state to state.

Princeton Tec reserves the right to change product specifications without notice.

### FOR CALIFORNIA RESIDENTS

WARNING: This product contains Bisphenol A (BpA) a chemical known to the State of California to cause birth defects or other reproductive harm.

### Return Policy

If your light fails to operate, follow these simple steps:

1. Check batteries. Replace if necessary.
2. To send your light in for repair or replacement, first contact Princeton Tec customer service on **1-800-257-9080** to request an RMA number. Please have your light model, date of purchase and a brief description of the fault you are experiencing. No warranty repairs will be accepted without an RMA number.
3. Return the light to: **Princeton Tec, PO Box 8057 Trenton NJ 08650**. Postage due and freight collect items will not be accepted.
4. Upon receipt your light will be processed in about two weeks. Please allow additional time for return transportation from NJ.

Figure 1 – Battery Installation

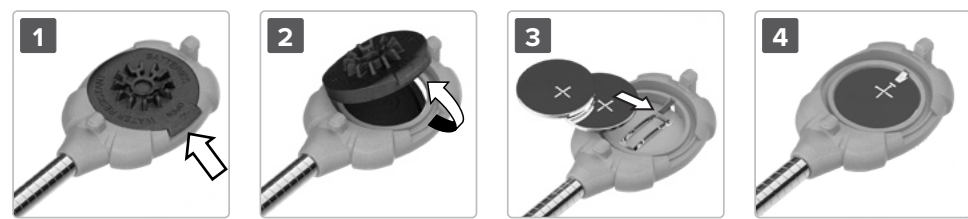


Figure 2 – Switch Operation



Figure 3 – Programming Mode

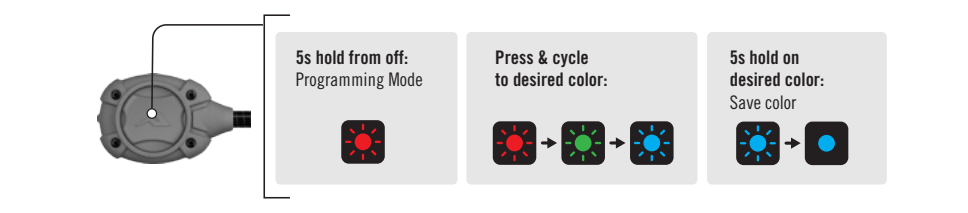


Figure 4 – ARC Rail Installation

Slide ARC Rail Adapter into ARC rail to desired position and secure in place with center anti-slip lock screw. DO NOT OVERTIGHTEN this screw.

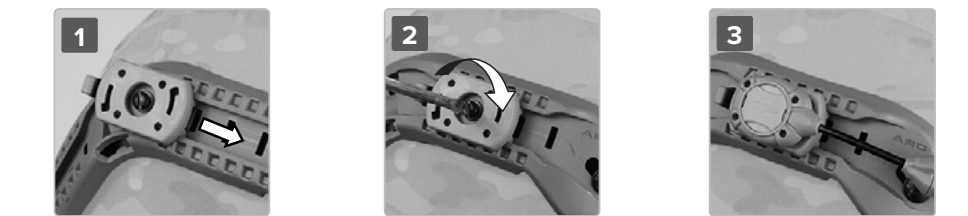


Figure 5 – MOLLE Mount

Slide clip inside any strap position, pinch MOLLE strap to hook the lower end of the metal clip onto the strap.



Figure 6 – M-LOK® Mount

Insert screw and T-nut into M-LOK® mount. T-Nut "gap" must be slightly greater than the thickness of the mounting surface. Slide mount on to M-LOK® rail and tighten with screwdriver.

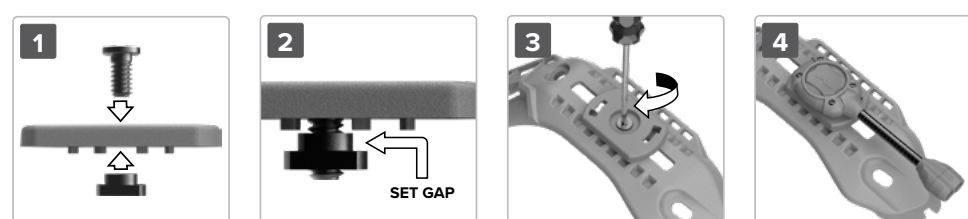


Figure 7 – MICH Mount Installation

Back the screw out so the end of screw is flush with metal U-clip. Slide the exposed U-clip over the bottom edge of your helmet with the metal clip on the inside and the plastic base exposed on the outside of your Helmet. Holding Mount firmly upward, tighten center slotted screw until it stops.



Figure 8 – Picatinny Rail Mount

Remove the center through screw from the side of the Picatinny base mount. Slide Picatinny to desired position and insert side locking screw aligning with any slot in Picatinny rail and tighten to clamp in place. DO NOT OVERTIGHTEN this screw.



Figure 9 – (ABR) Above Rail Mount

A. If using MPLS ABR on a ballistic helmet, skip to step two. For use with nonballistic helmets, begin by snapping off unneeded portion of ABR mount by hand or with a pair of pliers, and discarding the smaller "hook" portion



B. Loosen or remove front rail screw, and slide ABR into desired position beneath rail. Retighten front rail screw.



C. Select Charge MPLS mount and secure with included machine screws, gently tightening with a Phillips screwdriver. Install Switch/Point onto mount.

