

**WILCOX<sup>®</sup>**

**RAID <sup>Xe</sup>**  
TM

Providing Operators  
with Control, Flexibility &  
the Ultimate Beam Clarity



**INTRODUCTION**

The RAID Xe (Enhanced Ruggedized Aiming/Illumination Device) is the culmination of years of operator feedback and leading-edge technical advancements. The result is a compact, ergonomic aiming and illumination device with a uniquely rich feature set that achieves the highest standard of optical performance.

**FLEXIBLE ILLUMINATION**

Operators moving from short range to long range require flexibility while illuminating areas and potential targets. The power steps native to the RAID Xe allow fast, on the fly IR range adjustment. The ergonomic illuminator wheel allows easy rapid adjustment of the NIR illuminator beam divergence giving the operator control to focus IR light in a tight area or illuminate a large area.

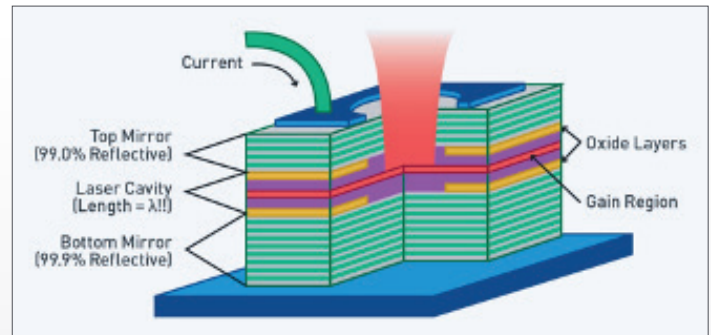


Additionally, the RAID Xe is equipped with a 40-degree LED Room illuminator for close quarter missions. This allows room illumination without blooming. This feature allows end users to check and secure hallways and rooms, while not over saturating these specific areas with lasers.

**ULTIMATE BEAM CLARITY**

Light quality is always a discriminating factor in operator reaction time and identification. More than any other electro-optics manufacturer, Wilcox has led in the development and delivery of VSCSEL technology. The RAID Xe's variable NIR illuminator sets a high standard for optical performance for an aiming and illumination device.

By advancing and pushing the capabilities of VCSEL laser technology beyond our competitors, the RAID Xe provides the operator with a true advantage over other sighting systems. Achieving this high level of beam clarity improves both situational awareness and on-the-move reaction time allowing for optimal combat identification and targeting.



*The sources on a VCSEL emit perpendicular to the surface allowing numerous emitters in a single laser which produces a well controlled uniformed laser beam. The superior, speckle-free beam is free of dead spots commonly associated with EEL & LED laser technology.*

**EASE OF USE**

The RAID Xe's co-aligned optical bench houses a visible laser (VIS), near infrared laser (NIR) and NIR Illuminator. The unique single windage and elevation adjustment allows operators to set one zero for the entire optical bench with just one adjustment. This feature addresses the time consuming process of zeroing both the IR Flood and illuminator separately.

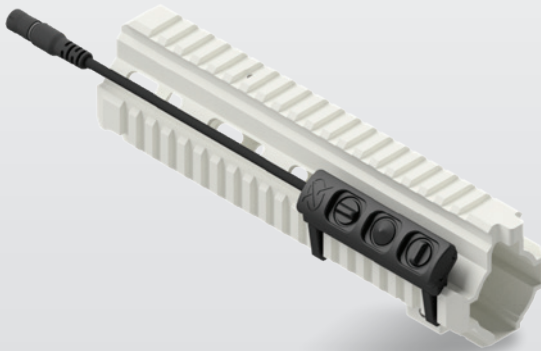


*The single windage and elevation adjustment allows operators to set one zero for the entire optical bench with one adjustment.*



### OPERATOR DEFINED FUNCTIONALITY

Wilcox has extended the RAID Xe's capabilities with the [ERGOTCO Xe Activation Keypad](#). This keypad enhancement removes the need of the operator to memorize device switch positions by allowing user defined mapping of critical functions. The 3 control buttons on the pressure pad are ergonomically designed to allow for accurate button identification. The ambidextrous design allows attachment on either side of the weapon including positioning in between the quadrant rails of most rifle handguards.



The ergonomic considerations and user defined button mapping functionality allow for identification of each button without looking at the control pad providing a constant **"heads up, eyes out"** posture. This capability further extends the end user's ability to identify and engage targets while enhancing their safety in stressful, hostile environments.

### SMALL FORM FACTOR

The RAID Xe also offers the operator with the several tactical advantages due to the unit's overall size, weight and architecture. With a weight of approximately 137 grams (without the single CR123 Battery), and the overall width and length of about a typical business card, the RAID Xe doesn't fatigue the end user while aiming their weapon nor does it require excessive rail space once mounted.

### CONCLUSION

Military and law enforcement including special forces, SWAT and security personnel, face an array of unique challenges in low or no light environments where quick target acquisition and identification are required. The Wilcox RAID Xe represents a complete, robust solution for any operator requiring a high degree of awareness, flexibility and accuracy to ensure mission success.



For additional information, [view the RAID Xe product page](#).  
For general information about Wilcox and our products [contact us directly](#), or [download our Product Catalog](#).



© 2023 Wilcox Industries Corp. All rights reserved. WILCOX® is a Federally Registered Trademark of Wilcox Industries Corp. Modular by Design™ is a trademark of Wilcox Industries Corp. Specifications subject to change without notice. The Wilcox RAID Xe™ is patent pending. Export of this product is regulated by the U.S. Department of State in accordance with guidelines of "International Traffic Arms Regulation (ITAR) per Title 22, Code of Federal Regulations, Parts 121-128.

25 PISCATAQUA DRIVE | NEWINGTON NH, 03801 | 603.431.1331 | WWW.WILCOXIND.COM