



Trijicon RCR™

Ruggedized Closed Reflex



An extremely rugged and durable closed emitter optic which meets the demanding standards for military and law enforcement applications. The Trijicon RCR™ represents the next evolution of the Trijicon RMR® and is designed to be as durable as the legendary Trijicon ACOG®, while also improving precision and accuracy with any style or caliber of firearm in any type of environment. The RCR can withstand direct impacts and survive in the harshest environments, while still providing enhanced accuracy and an excellent field of view. The RCR does this while not requiring additional or new plates to be used as it works with the current RMR bolt pattern and direct mounts without the use of a dovetail.

All Conditions Durability

- 1 Unique, patented mounting system that uses the RMR bolt pattern so no additional plates are needed
- 2 Trusted by Military and Law Enforcement
- 3 Intuitive Easy-Push Illumination Buttons
- 4 Same Deck Height as the RMR
- 5 Top Loading Battery
- 6 Made in USA

The Science of Brilliant®

At Trijicon, we are bound by a commitment to industry-leading research, design, and testing to seek innovative aiming solutions that constantly redefine “brilliant.” That’s why Trijicon products are subjected to the below testing methods.



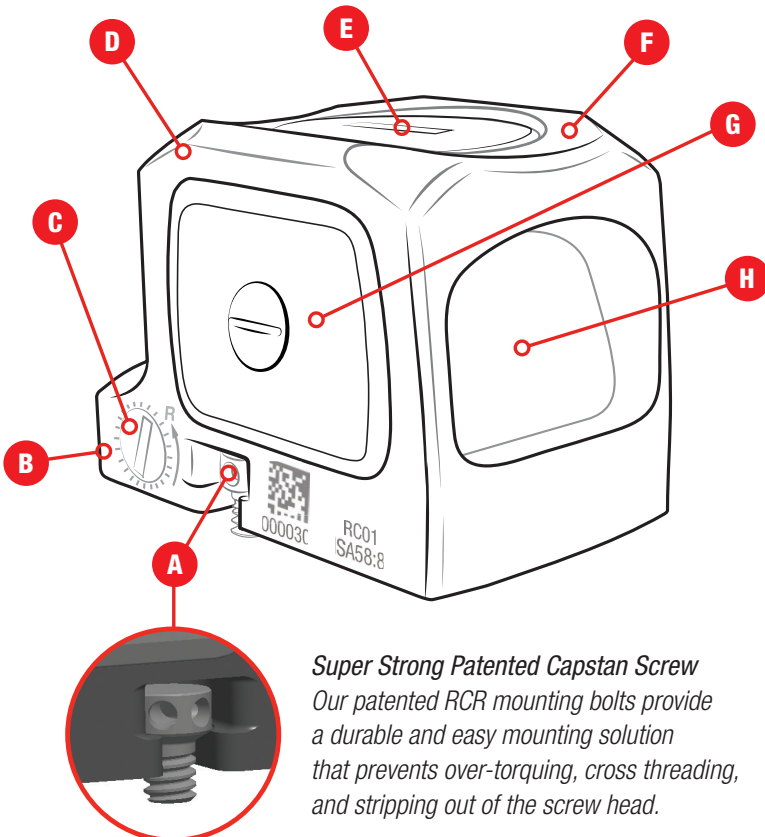
Alaska-to-Africa Tested | Immersion Tested | Solid Zero Tested
Vibration Tested | Drop Tested

Visit [Trijicon.com/Science](https://www.trijicon.com/Science) to learn more.

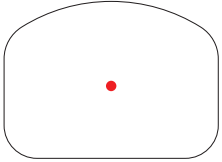
Features and Benefits

Specifications

- A Multi-Platform-Friendly, No Additional Plates Needed**
The Trijicon RCR™ has a unique patented mounting system that allows the optic to mount using the Trijicon RMR® bolt pattern.
- B Same Deck Height as the RMR**
Allows for use with RMR compatible Iron Sights.
- C Easily Adjustable Windage/Elevation**
No need for special tools, 1 MOA per click.
- D Built to Handle the Worst**
Built from 7075-T6 aluminum and hard coat anodized, the RCR was designed to survive in any conditions.
- E Top Loaded Battery**
CR2032 battery, six years of continuous operation at setting 5.
- F Outstanding Durability**
The same unique patented housing shape of the RMR now in a closed emitter version, it still diverts the force of an impact away from the lens, greatly increasing drop survivability and one-handed slide manipulation.
- G Upgraded Electronics and Buttons**
Ruggedized battery contacts and electronics ensure performance and survivability in harsh environments, with distinctive and easy-to-use adjustment buttons.
- H True-Color, Multi-Coated Lens**
Wide-band light transmission ensures minimal change in target area color.



Super Strong Patented Capstan Screw
Our patented RCR mounting bolts provide a durable and easy mounting solution that prevents over-torquing, cross threading, and stripping out of the screw head.

Magnification	1x
Sight Window	0.88 x 0.64 in. 22 x 16mm
Weight	1.95 oz. (w/ battery) 55g
Adjustments	1 click = 1 MOA
Adjustment Range (Elevation & Windage)	150 MOA Total Travel
Lens	Tempered Glass
Waterproof	66 ft 20m
Dimensions (L x W x H)	1.8 x 1.2 x 1.3 in. 45 x 30 x 33mm
Reticle Options <i>Reticles not shown to scale.</i>	 3.25 MOA Dot RCR1-C-3300001
Brightness Settings	Manual, 10 Brightness Settings, (3 NV, 1 Super Bright)
Illumination Source	LED Powered by CR2032 Battery
Battery Life*	Over 6 years of continuous use at brightness setting 5 of 10 at 70°F (21°C)

*When used at 70°F (21°C). Extreme temperatures (high or low) will affect lithium battery performance.

Holster Compatibility



Scan the QR Code to see the most up-to-date list of compatible holsters that works with the Trijicon RCR or visit:
[Trijicon.com/HolsterCompatibility](https://www.trijicon.com/HolsterCompatibility)

[Trijicon.com/RCR](https://www.trijicon.com/RCR)