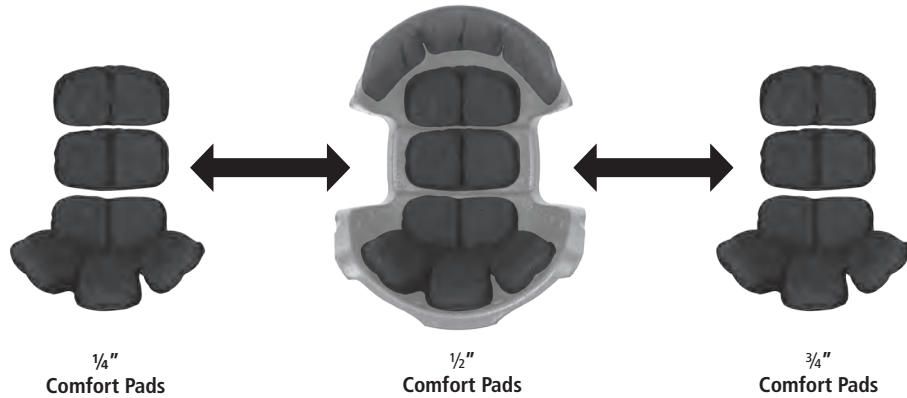


PAD CONFIGURATIONS

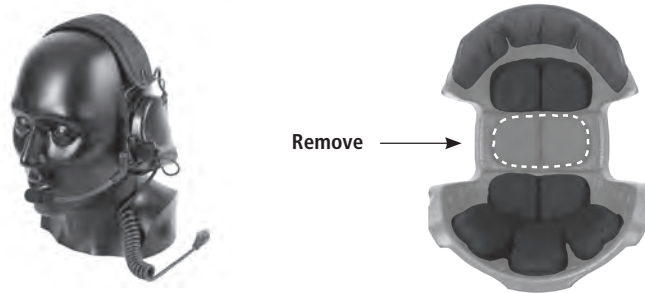
ALTERNATE PAD CONFIGURATION

Adjust the comfort and fit of your 360° Liner by swapping the 1/2" Comfort Pads with the 1/4" or 3/4" Comfort Pads. A combination of pad thicknesses can be used to achieve best comfort and fit.



HEADSET PAD CONFIGURATION

For use of the 360° Liner in conjunction with a banded headset, simply remove the Comfort Pad located at the crown as shown below.



CLEANING & CARE

- 1 Spot-clean the 360° Liner with a mild detergent and water.
- 2 Visually check the entire 360° Liner for signs of breakage.
- 3 Clean dust and dirt by using air pressure.

NOTE: IF ANY DEFECTS ARE FOUND, THE DAMAGED COMPONENTS SHOULD BE REPLACED BEFORE USE.

www.ops-core.com



360° LINER OPERATOR'S MANUAL

© OPS-CORE 2015 UM-1004 REV.A



FOR ACH HELMETS

INTRODUCTION

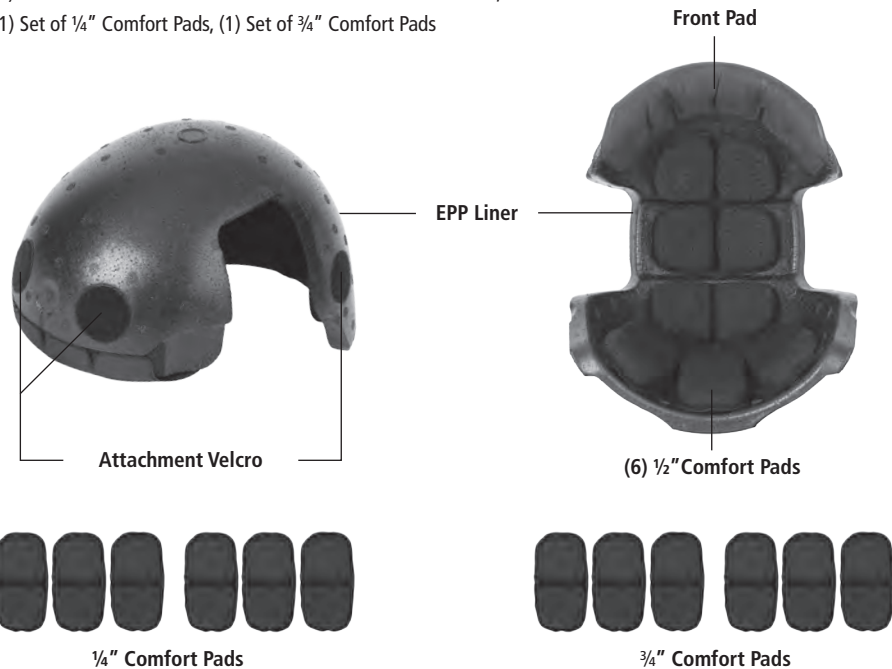
ABOUT YOUR 360° LINER:

This manual covers the installation and basic operating instructions for the Ops-Core 360° Liner. The 360° Liner ensures comfort during extended use. Advanced materials and design work with one another to enhance resistance to rotational forces of standard retention systems and deliver consistent protection.



360° LINER KIT INCLUDES:

- (1) 360° Liner Assembled with 1/2" Comfort Pads and Front Pad,
- (1) Set of 1/4" Comfort Pads, (1) Set of 3/4" Comfort Pads



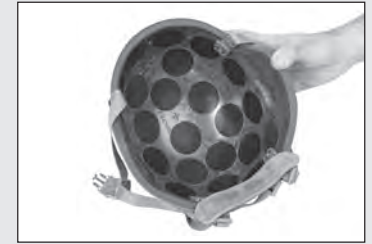
FEATURES

- EPP Liner provides a full coverage layer that outperforms competitive products and provides blunt trauma protection, regardless of pad size configuration
- Pads are wrapped in a breathable, moisture-wicking outer fabric that is comfortable and easy to clean

HELMET SHELL PREPARATION & LINER INSTALLATION

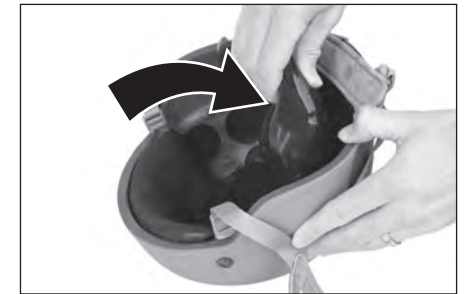
1 START WITH AN EMPTY HELMET SHELL

Empty helmet shell by removing any existing comfort pads. The 360° Liner quickly attaches to ACH Helmets without the use of tools.



2 ALIGN AND INSERT 360° LINER

Align the 360° Liner along the front edge of the helmet shell while applying pressure to ensure that the Velcro securely attaches. Next, guide the crown and rear of the liner into the helmet shell, continuing to apply pressure.



3 CONFIRM ALIGNMENT

Confirm that the 360° Liner is properly aligned. If the liner is misaligned, pull the rear of the liner from the helmet shell and realign as necessary.

