

1 OVERALL ELEVATION

Scale: 3/8" = 1'-0"

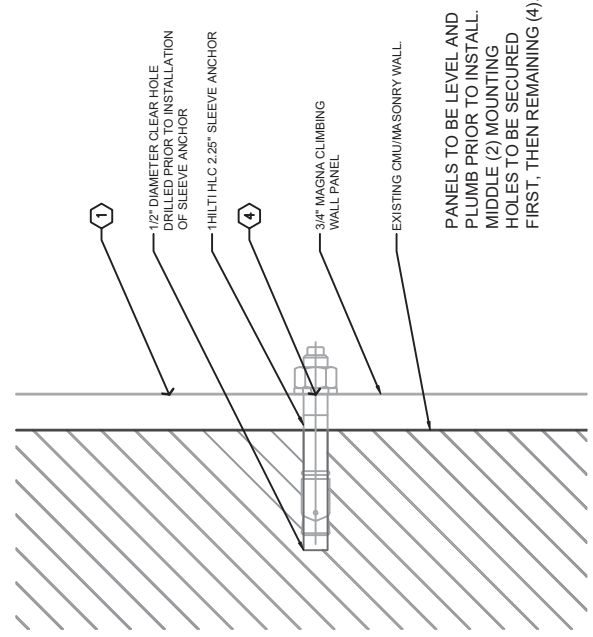
- TYPICAL CLIMBING WALL PANELS**
MATERIAL LIST PER PANEL (QTY. 5 PROVIDED)
- (1) 4' X 8' CLIMBING PANEL (3/4" THICK) & ANCHORS
 - (1) 2" STANDARD CLIMBING MAT
 - (2) CORDLESS MAT LOCKING SYSTEM
 - (20) GROPERZ HAND HOLDS AND MOUNTING BOLTS
 - (4) RED RELIEF LINE MOUNTS & FASTENERS

KEYNOTES

- 1 TYPICAL WALL PANEL
- 2 2" STANDARD MAT - CORDLESS LOCKING
- 3 1/2" T-NUT MOUNTING HOLE W/ T-NUT (3/8" - 16 X 5/8")
- 4 1/2" PANEL MOUNTING HOLE
- 5 RED RELIEF LINE
- 6 CORDLESS LOCKING MOUNT

NOTE:
 ENSURE THAT ENTIRE SYSTEM IS LEVEL AND SQUARE FROM THE FIRST PANEL INSTALLED.

NOTE:
 STUDY AND FOLLOW ALL INSTRUCTIONS AND LITERATURE PROVIDED WITH SHIPPED MATERIALS. SHOP DRAWINGS ARE INTENDED TO COORDINATE SIZING AND GENERAL PROVIDED MATERIALS



2 ANCHOR DETAIL

Scale: 3" = 1'-0"

SIGNATURE: XXX	OWNER:
REG. No:	CONSULTANT:
DATE:	DATE
DRAWN BY:	DESCRIPTION
REVIEWED BY:	
SHEET NO.:	

PROJECT LOCATION: _____

PROJECT NO.: _____

SCALE: _____ AS NOTED

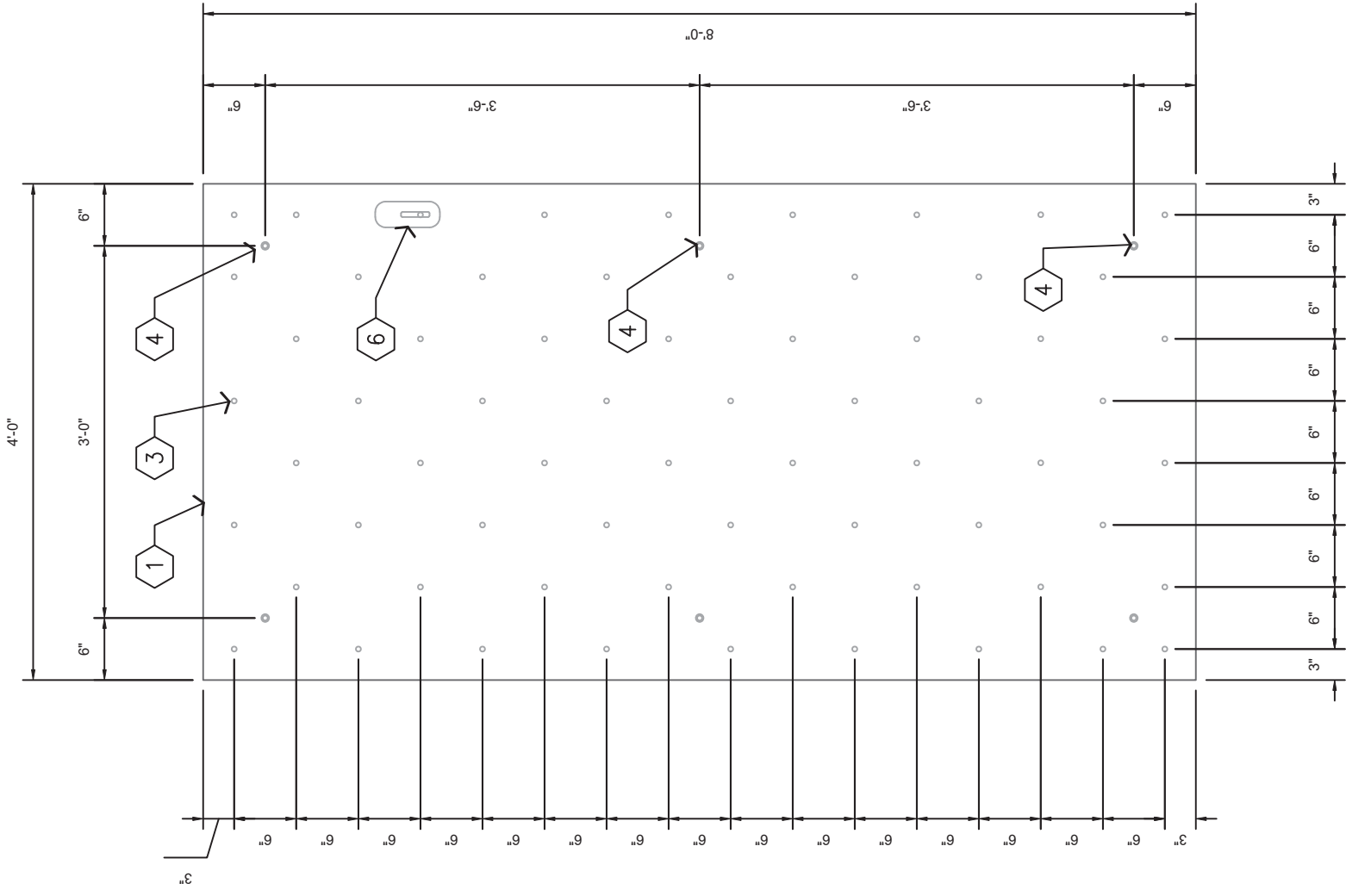
DATE: _____

DRAWN BY: _____

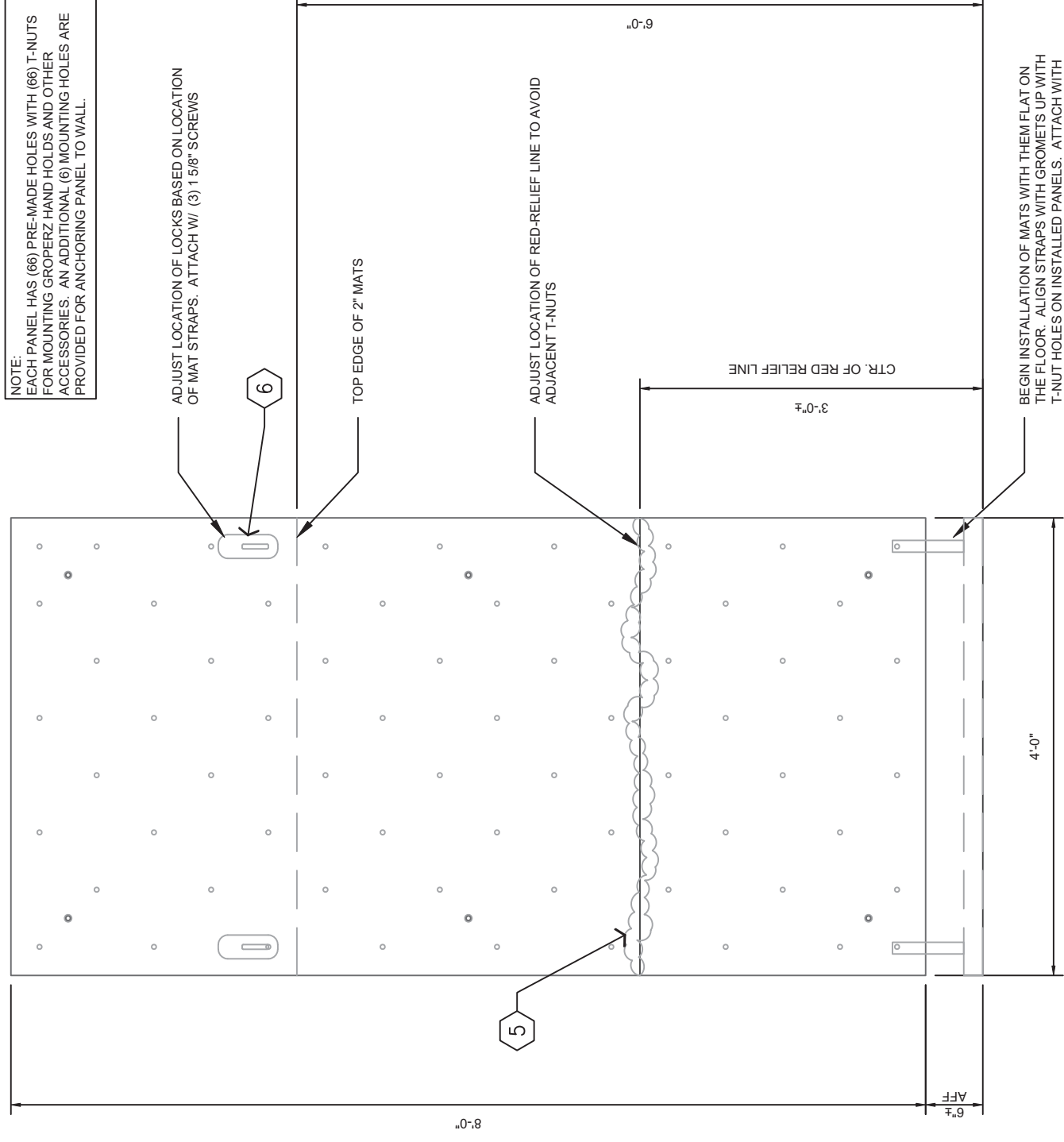
REVIEWED BY: _____

SHEET NO.: _____

OVERALL ELEVATION AND DETAILS



1 CLIMB WALL HOLE PATTERN
Scale: 3/4" = 1'-0"



2 INSTALLED PANEL
Scale: 3/4" = 1'-0"

KEYNOTES

- 1 TYPICAL WALL PANEL
- 2 2" STANDARD MAT - CORDLESS LOCKING
- 3 1/2" T-NUT MOUNTING HOLE W/ T-NUT (3/8" - 16 X 5/8")
- 4 1/2" PANEL MOUNTING HOLE
- 5 RED RELIEF LINE
- 6 CORDLESS LOCKING MOUNT

NOTE: EACH PANEL HAS (66) PRE-MADE HOLES WITH (66) T-NUTS FOR MOUNTING GROPERZ HAND HOLDS AND OTHER ACCESSORIES. AN ADDITIONAL (6) MOUNTING HOLES ARE PROVIDED FOR ANCHORING PANEL TO WALL.

SHEET TITLE:
PANEL DETAILS AND INSTALL NOTES

PROJECT NO.:
SCALE: AS NOTED
DATE:
DRAWN BY:
REVIEWED BY:
SHEET NO.:

SIGNATURE: XXX	REG. No:
OWNER:	CONSULTANT:
PROJECT LOCATION:	
DATE	DESCRIPTION