



# Fluid Bed Processor Model MFB-300

## Control and Process Features

- Touch Screen Wall Mount Panel
- Inlet, Outlet and Product Temperatures
- Split Filter Shake Time and Intervals
- Bowl Lift and Lower
- Batch Record Printer
- Top and Bottom Spray Arrangement
- Electrical or Steam Pre-Heater and Heater
- Dehumidification
- Differential Pressure Gauges
- Atomizing Air Pressure Regulators
- Variable Speed Fan
- Air Assist Bottom Spray Discharge
- Peristaltic Multi-Pump, Tank and Cart
- Emergency Stops

## MFB-300 Production Fluid Bed Granulator/Dryer

GMP design for processing 100 to 300 kilos

5 Top Spray Ports (includes 5 head top spray lance) and 5 Bottom Spray Nozzles

Type 316 stainless steel for all product contact parts

Pharmaceutical inside mirror finish

Three interchangeable conical process bowls

Swing away/tilting bowl design

Sanitary clamp for ease of bowl removal

Split shaker filter bag

Sample thief

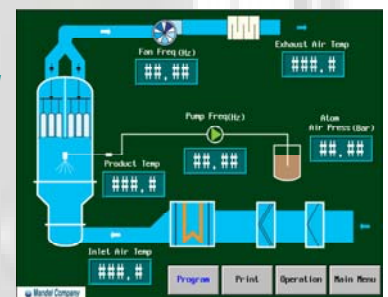
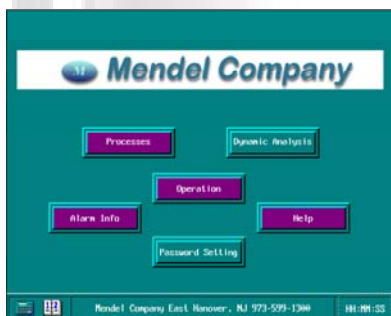
Dimensions (m): 6 L x 5 W x 6 H

Variable speed fan

Power requirements, 45 Kw, 4-6 bar air pressure

Service and spare parts provided from our facility

Technological expertise and testing for process optimization



 **Mendel Company**

12C Great Meadow Lane  
East Hanover, NJ 07936

Phone: 973-599-1300

Fax: 973-599-0019

Email: [sales@mendelco.com](mailto:sales@mendelco.com)

Web: [www.mendelco.com](http://www.mendelco.com)

## MFB-300 Specifications

Production capacity	300 kilos		
Air flow capacity	9500 m <sup>3</sup> /hr		
Fan Power	45 Kw		
Static Pressure	48 inches of water column		
Steam Consumption	To 80 C	Total Power Kw	238
Compressed air bar	4 to 6	Consumption m <sup>3</sup> /hr	270
Noise	Less than 63 dB		
Dimension (LxDxH)	6 x 5 x 6 m		
Net weight	7,800 Kg		



**Mendel Company**

12C Great Meadow Lane  
East Hanover, NJ 07936

Phone: 973-599-1300

Fax: 973-599-0019

Email: [sales@mendelco.com](mailto:sales@mendelco.com)

Web: [www.mendelco.com](http://www.mendelco.com)