



HOW TO CLEAN A ROOF SAFELY & EFFECTIVELY

EDUCATION GUIDE

Your Roof Wash product is on the way. In the meantime, I'm going to show you how to clean so you're ready when it arrives. Here is a complete step by step guide showing you how to clean with Roof Wash or Tile Roof Wash.

JOHN REDIHAN President + Contractor



SAFE & EFFECTIVE



**0% BLEACH
NON-CORROSIVE**



**PET SAFE +
LANDSCAPE SAFE**



**USED BY 2,500 +
CONTRACTORS
NATIONWIDE**



3 COMPONENTS NEEDED TO BE SUCCESSFUL

KNOWLEDGE . EQUIPMENT . PRODUCT

TOOLS NEEDED:

- 1 WASH SAFE ROOF WASH OR TILE ROOF WASH
- 2 GARDEN STYLE PUMP SPRAYER, BACK PACK SPRAYER, WATER TRANSFER PUMP
- 3 5 GALLON MIXING BUCKET
- 4 PRESSURE WASHER (OPTIONAL)
- 5 SAFETY GOGGLES & SAFETY GLOVES

SAFETY REMINDERS:

Use extreme caution cleaning your roof. Be careful on ladders and watch out for electrical wires.

Cover and avoid contact with windows, glass and raw metals (copper and aluminum) when spraying.

Avoid contact with eyes and prolonged skin contact. Keep out of reach of children and pets. Do not ingest. If swallowed, drink water and seek immediate medical attention.

COVERAGE AREA DILUTION RATIO FOR ACTIVATION

3 LBS: UP TO 3000 SQ FT OF ROOF = 12 GAL
10 LBS: UP TO 10,000 SQ FT OF ROOF = 40 GAL
40 LBS: UP TO 40,000 SQ FT OF ROOF = 160 GAL

USE 1/2 A CUP PER GALLON OF WATER.
DOUBLE THE STRENGTH TO REMOVE TOUGH STAINS.

PROJECT GOAL: COAT ROOF WITH ROOF WASH

The goal is to coat your roof with **Roof Wash**, which is not an easy task and can be quite dangerous. The safest way to do this is to use some type of pump to spray your roof. If your roof area is walk-able then a garden-style pump sprayer may be all that is needed - however, a steep roof must be sprayed from the ladder. The safest way to do this is to lean a ladder up on your roof above the gutter line. Be sure to use a ladder stabilizer to prevent the ladder from sliding along the gutter! This is the best spot to spray from.

DIRECTIONS

DETERMINE HOW MUCH ROOF WASH YOU'LL NEED & PREPARE YOUR SOLUTION

In a 5 gallon bucket, plastic drum or trash barrel, mix product as directed with warm to hot water and stir frequently for 15- 20 minutes to activate the solution. Either pour the product into a pump sprayer or place submergible pump into the solution attaching a 25 foot garden hose and spray nozzle to the outgoing end of the pump. This is best done with 2 people, one person stays with the bucket of solution and pump and one person should be up on the ladder with the end of the hose and a spray nozzle open when starting the pump to create air/solution flow. Time to spray....



FREQUENTLY ASKED QUESTIONS

WHEN IS THE BEST TIME TO CLEAN?

Roof Wash is best applied to a dry roof which has not encountered rain in a while so that it can be absorbed. Morning or afternoon is best. Avoid high heat in the middle of the day. Never apply with rain or snow.

HOW LONG BEFORE I CAN RINSE OFF PRODUCT?

You can start to rinse off right away!

HOW DO I DO THE MOTHER NATURE RINSE?

In this instance, you'll let the application dry for an hour or two then repeat the process. This insures good absorption. Leave the product on for the rain to wash off. After the first significant rainfall, you should see up to an 80% difference. The roof will eventually be 100% clean after more rain.

HOW DO I KEEP MY ROOF CLEAN?

Apply a coat of Roof Wash yearly or bi-yearly. Consider bi-yearly if water is nearby, if there is a lot of shade or trees, if your roof faces north, if your neighbor is infected or if you live in a humid climate. The best time of year for maintenance cleaning is Fall so winter's rain, snow, sleet, etc; can help clean the roof. No spraying necessary -the rain does the work!

TURN THE PUMP ON AND SPRAY THE ROOF

Start by aiming at the highest point and letting the solution run down over the roof. Be sure to coat the entire roof! There are 2 ways to go about rinsing off the solution. **For best results:** rinse off immediately with the use of a pressure washer. Your pressure washer must always be aimed down the roof using the water pressure at 300-500 PSI max to avoid scarring and simply rinse clean . The other way is letting **Mother Nature** do the rinsing with gradual results over time. See how to under "**Mother Nature Rinse**".

ABOUT WASH SAFE

At **WASH SAFE**, everything happens under one roof. Not only are we inventors and manufacturers of effective and conscientious exterior cleaning products, we're contractors too! We stress test every one of our products to ensure they perform better than hazardous chemicals so our environmental impact is a positive one and our customers love us too. Be sure to check out our other best-sellers like Wash Safe Supreme, Cedar Wash, Gets Rust Off & Spray & Clean Composite Deck Cleaner.



**SAVE 10% ON
NEXT ORDER
WITH CODE R1019**

Promotion begins on 6/27/2019 and ends 12/31/2019. All orders are limited to stock; no rain checks. Not valid on prior purchases. Consumer must pay applicable sales tax. Must enter promo code at checkout. Offer cannot be combined with any other promotion or discount- including wholesale pricing. Promotions have no cash value. One use per customer.

READY TO CLEAN WITH WASH SAFE™ ROOF WASH



COVERAGE AREA AND AVAILABLE SIZES:

- **3LB BOTTLE:** will make 12 gallons of solution and will treat up to **3,000 sq ft.**
- **10LB BUCKET:** will make 40 gallons of solution and will treat up to **10,000 sq ft.**
- **40LB BUCKET:** will make 160 gallons of solution and will treat up to **40,000 sq ft.**

HERE ARE SOME ANSWERS TO FREQUENTLY ASKED QUESTIONS...



MADE IN USA



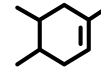
POWERFUL SURFACTANTS



LANDSCAPE SAFE



NON-STAINING



NO CHLORINE



PET SAFE



DO I USE WARM OR COLD WATER? DO I NEED TO STIR FOR FULL 15 MINS?

WARM IS BEST, BUT YOU CAN USE COLD IF YOU DO NOT HAVE ACCESS TO WARM WATER. THE PRODUCT WORKS BECAUSE OF THE OXYGEN, IT DEVELOPS WHEN IT IS MIXED WITH WATER. THE OXYGEN NEEDS TIME TO WARM.



HOW LONG UNTIL I CAN RINSE THE PRODUCT OFF ONCE APPLIED?

AFTER THE PRODUCT IS APPLIED TO THE ENTIRE SURFACE, YOU CAN START TO RINSE RIGHT AWAY. YOU WILL SEE THE PRODUCT WORKING NOT LONG AFTER APPLICATION. AT MAX, FOR BEST RESULTS, RINSE OFF WITHIN 45 MINUTES OF INITIAL APPLICATION. YOU DO NOT WANT TO LET THIS PRODUCT BAKE IN THE SUN ON HOT DAYS.



WHAT SHOULD I MIX THE PRODUCT IN? WHAT SHOULD I USE TO APPLY?

WE RECOMMEND MIXING PRODUCT IN A 5 GALLON MIXING BUCKET, PLASTIC DRUM OR TRASH BARREL. THE EASIEST WAY IS WITH A GARDEN STYLE PUMP SPRAYER WHICH INVOLVES BEING ABLE TO ACCESS YOUR ROOF, DECK, SIDING OR WHATEVER SURFACE YOU ARE CLEANING. WHAT THE PROFESSIONALS USE IS A GAS POWERED WATER TRANSFER PUMP, THEY MIX A BIG BATCH AND HOOK UP A GARDEN HOSE TO THE TRANSFER PUMP AND FROM THE GUTTERS EDGE CAN SPRAY ANY ROOF. THESE TRANSFER PUMPS CAN BE RENTED AT TOOL RENTAL COMPANIES OR A SECOND OPTION IS AN ELECTRIC SUBMERSIBLE WATER TRANSFER PUMP. SOMETHING YOU WOULD USE TO PUMP OUT A SWIMMING POOL OR SPA, THESE ARE INEXPENSIVE AND CAN BE BOUGHT AT ANY HOME IMPROVEMENT CENTER, YOU JUST MIX UP A BATCH IN A TRASH BARREL, HOOK UP A GARDEN HOSE TO THE OUTFLOW OF THE PUMP AND SPRAY YOUR ROOF, THE BEST NOZZLE TO SPRAY YOUR ROOF IS A PISTOL STYLE NOZZLE.



WHAT DO I USE TO RINSE OFF THE PRODUCT?

A PRESSURE WASHER WILL YIELD BEST RESULTS. FOR SOFT WOODS LIKE CEDAR OR PINE, APPLY ABOUT 500 TO 600 PSI. FOR HARDER WOODS, YOU CAN GO UP TO 1200 TO 1500 PSI. CHOOSE THE RIGHT TIP TO USE AS WELL. FOR WOOD CLEANING, GENERALLY A FAN TIP (USED CAREFULLY) WILL WORK BEST. TOO HIGH A PSI CAN "FUR" WOOD, LEAVING IT DAMAGED. WASH SAFE'S TIPS ARE SPECIALLY BORED OUT TO REDUCE THE PSI OF ANY PRESSURE WAND BY 80%. KEEP SPRAYER 6-12" AWAY FROM SURFACE.



DO I PUT THE PRODUCT ON A DRY OR WET SURFACE?

OUR PRODUCTS ARE DESIGNED TO BE APPLIED ONTO A DRY SURFACE. WHEN A SURFACE IS WET, IT MAKES IT DIFFICULT FOR THE PRODUCT TO STICK TO THAT SURFACE AND CLEAN LIKE IT IS SUPPOSED TO. A DRY SURFACE IS OPTIMAL FOR BEST RESULTS.



WILL THE PRODUCT REMOVE PAINT FROM SURFACES?

WASH SAFE PRODUCTS WILL CERTAINLY REMOVE STAIN FROM SURFACES, HOWEVER IT CAN REMOVE SURFACE PAINT TO A DEGREE. IF YOU ARE WANTING TO WASH PAINTED SURFACES, YOU WILL NEED TO MAKE THE FORMULA WEAKER TO JUST "CLEAN" AND NOT TO TAKE OFF ANY PAINT. WE RECOMMEND 1/4 CUPS PER GALLON. IT WILL REMOVE BLEACHING OIL AND OTHER OIL/WATER-BASED STAINS.



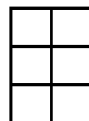
WHY CAN'T I APPLY USING A SIPHON TYPE OR PRESSURE WASHER?

FOAMING ACTION HELPS THE PRODUCT TO STAY ON THE SURFACE TO WORK. PUTTING IT THROUGH, A PRESSURE WASHER OR A SOAP TYPE SIPHON IT DILUTES THE PRODUCT AND IT DOES NOT GIVE IT ENOUGH TIME TO BE ACTIVATED. THE PRODUCT WORKS BECAUSE OF THE OXYGEN, IT DEVELOPS WHEN IT IS MIXED WITH WATER. THE OXYGEN NEEDS TIME TO FORM.



WHAT SPEED SHOULD IT BE APPLIED?

STEADY SWEEPING MOTIONS TO APPLY THE CLEANING PRODUCT IS RECOMMENDED, TOO FAST AND IT WILL NOT BE ABSORBED. TOO SLOW AND YOU CAN USE MORE THAN WHAT IS NECESSARY. YOU WANT ENOUGH TO COAT THE SURFACE WITHOUT DRENCHING IT. YOU WANT TO MAKE SURE YOU ARE FULLY COVERING THE SURFACE AREA YOU WILL BE CLEANING.



SHOULD I AVOID WINDOWS? WHAT HAPPENS IF I GET IT ON THEM?

YES, YOU'LL WANT TO AVOID WINDOWS AND METAL SURFACES THAT HAVE NOT YET OXIDIZED. IT IS BEST IS TO RINSE BEFORE AND AFTER OR TAPE OFF YOUR WINDOWS AND REMOVE SCREENS WHILE CLEANING A HOUSE. ALTHOUGH THIS IS NOT A COMMON OCCURRENCE, IF PRODUCT DRIES ON WINDOWS, WE HAVE FOUND THAT YOU CAN USE OVEN CLEANER, MAGIC ERASER, OR SOFT SCRUB TO REMOVE THE RESIDUE.



WE WANT TO SEE YOUR HOME IMPROVEMENTS!

*Tag us in a photo with #ResultsByWashSafe for a chance to win a \$10 gift card from **STARBUCKS™***



Want to win a Starbucks gift card? It's easy! Tag us in your Before & Afters on social media with the Hashtag #ResultsByWashSafe and @washsafe for a chance to win. Let us know what products you're using to get your results like in the example below. We'll pick a new winner every month. Winners will be chosen based on results, originality and creativity. Humor will score you points too!



Check out this **ROOF CLEANING** before & after! You'll never find better, safer products for cleaning your roof. Wash Safe's Roof Wash cleans safely and effectively, as shown, without harmful bleaches or chemicals. We're proud that this before & after shows transformative results without harming landscaping or animals. #ResultsByWashSafe