

HOW TO CLEAN CEDAR SAFELY & EFFECTIVELY



EDUCATION SERIES

In this guide, I'm going to show you how to bring cedar roofing and siding back to its original beauty as you clean and brighten with Cedar Wash. With 11+ years of cleaning over 2,500 homes, we've developed our original Cedar Restoration method that delivers superior results and removes the stains from moss, mold and algae without stripping your home.

JOHN REDIHAN President + Contractor



SAFE & EFFECTIVE



**0% BLEACH
NON-CORROSIVE**



**PET SAFE +
LANDSCAPE SAFE**



**AMAZON'S
CHOICE FOR
CEDAR CLEANING**






3 COMPONENTS NEEDED TO BE SUCCESSFUL

KNOWLEDGE . EQUIPMENT . PRODUCT

TOOLS NEEDED:

- 1 WASH SAFE CEDAR WASH AND CEDAR SEAL
- 2 GARDEN PUMP SPRAYER, BACK PACK SPRAYER OR WATER TRANSFER PUMP
- 3 5 GALLON MIXING BUCKET
- 4 PRESSURE WASHER (OPTIONAL)
- 5 SAFETY GOGGLES & SAFETY GLOVES
- 6 CUSTOM TOOLED SOFT TIP NOZZLE

SAFETY REMINDERS:

-  Use extreme caution if cleaning roof shingles. Be careful on ladders and watch out for electrical wires.
-  Cover and avoid contact with windows, glass and raw metals (copper and aluminum) when spraying.
-  Avoid contact with eyes and prolonged skin contact. Keep out of reach of children and pets. Do not ingest. If swallowed, drink water and seek immediate medical attention.

WHAT ARE THE BEST CONDITIONS FOR DOING THIS PROJECT?

Cedar Wash is best applied to dry cedar which has not encountered rain in a while so that it can be absorbed. Morning or afternoon is best. Avoid high heat in the middle of the day. Never apply with rain or snow. The same goes for Cedar Seal. Do not apply Cedar Seal if rain is in the near future. Do not apply seal if surface is still very wet. Slightly damp is OK.

PROJECT GOAL: COVER ENTIRE CEDAR SURFACE WITH CEDAR WASH

Great results are easy to achieve with Cedar Wash and Cedar Seal. Our hydrogen peroxide based formulation receives compliment after compliment for its wood brightening properties. The alternative has always been chlorine bleach or TSP but the problem with bleach is (aside from being harmful) it leaves wood surfaces with a very unnatural bleached, "blotchy" look and rarely comes out uniformly clean. You won't have these problems with Cedar Wash so dive in and follow along!

WASHING

DETERMINE HOW MUCH CEDAR WASH YOU'LL NEED & PREPARE YOUR SOLUTION

See coverage area under FAQ section.
In a 5 gallon bucket, plastic drum or trash barrel, mix product as directed with warm to hot water and stir frequently for 15- 20 minutes to activate the solution. Either pour the product into a pump sprayer or place submergible pump into the solution attaching a 25 foot garden hose and spray nozzle to the outgoing end of the pump.



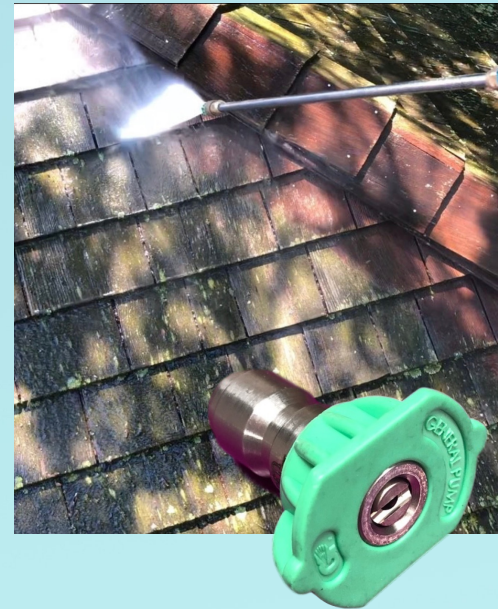
TURN THE PUMP ON AND SPRAY CEDAR

Start by aiming at the highest point and letting the solution run down over roof shingles or siding shakes. Be sure to coat the entire surface! If your cedar had an old stain or sealer on them, the Cedar Wash will penetrate it, dissolving the old stain enough to be washed off.



RINSE CEDAR CLEAN TO REMOVE STAINS & GRIME

The quickest way to wash is with a pressure washer but good results can come from light brushing with a scrub brush + a hose powered rinse. Using a garden hose and deck brush is one way of rinsing clean but it is slow and not as effective. Using a pressure washer is much faster. The key to pressure washing cedar is the pressure and the nozzle on the end of the pressure washer. Stock pressure washing nozzles put out a very sharp stream of pressure if you get the wand too close to the cedar you will leave a scar. Our Soft Tip Nozzles have "open mouths" so the water comes out just like a hose nozzle and will reduce pressure by 75%. You could clean with 2,000psi and by adding the Soft Tip reduce pressure to about 500psi. We highly recommend adding a soft tip to your pressure washer when cleaning cedar.



Read on

ABOUT WASH SAFE

At **WASH SAFE**, everything happens under one roof. Not only are we inventors and manufacturers of effective and conscientious exterior cleaning products, we're contractors too! We stress test every one of our products to ensure they perform better than hazardous chemicals so our environmental impact is a positive one and our customers love us too. Be sure to check out our other best-sellers like Wash Safe Supreme, Cedar Wash, Gets Rust Off & Spray & Clean Composite Deck Cleaner.



SAVE 10% ON CEDAR SEAL WITH CODE SEA19

Promotion begins on 08/07/2019 and ends 01/31/2021. All orders are limited to stock; no rain checks. Not valid on prior purchases. Consumer must pay applicable sales tax. Must enter promo code at checkout. Offer cannot be combined with any other promotion or discount- including wholesale pricing. Promotions have no cash value. One use per customer. Offer valid only at WashSafe.com

PROJECT GOAL: THE RIGHT TECHNIQUE FOR THE EFFECTIVE REMOVAL OF MOSS, MOLD, ALGAE + LICHEN STAINS

See the soap bubbling up on the grime?

Now you're ready to rinse the moss, mold and algae away to reveal like-new cedar. You'll want to start from the top and aim your wand down to avoid getting water under shakes and achieve consistent, even results without splotchy patches. As you're making sweeping motions, keep your wand about 12-16 inches away from the siding. Pay close attention to what you're spraying. Avoid windows (best to cover if you can) light fixtures, vents, metal that has not oxidized and eaves. When you have completed your cleaning, let it dry for 48 hours and then apply our Cedar Seal to protect it.



SEALING

PROJECT GOAL: KEEP CEDAR CLEAN FOR YEARS TO COME

Why is cedar seal critical to longterm result success?

Cedar Seal penetrates the cedar and forms a water resistant barrier that moisture can't penetrate. This water barrier will remain in the wood for up to 15 years! Cedar Seal also contains a fungicide to protect against any mold or mildew growth. The secret to preventing mold on wood, is not allowing the wood to absorb water, mold needs water, no water no mold. Cedar Seal should always be used after cleaning any cedar. You can use Cedar Seal as a base coat if you were going to apply a stain or paint to the cedar or if you just like the look of clean natural cedar. Without Cedar Seal, newly cleaned cedar will show mold again in as early as one year. Don't do all that cleaning work without apply Cedar Seal to protect it, it makes no sense at all. Cedar Seal is your insurance policy that your newly cleaned cedar will last.

HOW TO:

FOR BEST RESULTS:

- CLEAN DIRTY CEDAR FIRST WITH WASH SAFE CEDAR WASH,
- NEVER THIN THE FORMULA! NEVER ADD OR USE BLEACH TO FORMULA.
- DO NOT APPLY IF THE TEMPERATURE IS LESS THAN 40°F.

Make sure ALL cleaning solution has been rinsed off from cedar surface. Any remaining cleaning products on your cedar will cause the sealer to fail. When you have completed your cleaning, let it dry for 48 hours and then apply our Cedar Seal to protect it. Cedar Seal is designed to be easy-to-apply. We recommend spraying it with **a backpack sprayer** then back-brushing it. Cedar Seal will leave no lap marks. 2 coats of Cedar Seal should be applied - the second can be applied when the first coat is still moist, although there should be no visible pools or puddles. You can walk on the wet surface, there will be no footprints left behind.



RESULTS

Results will vary from home to home but, overall, our customers achieve results that go beyond expectation. If you have questions after reading this entire pamphlet, call us. We want you to be successful and love your before and after results. - Team Wash Safe



READY TO CLEAN WITH WASH SAFE™ CEDAR WASH?



COVERAGE AREA AND AVAILABLE SIZES:

- **3LB BOTTLE:** will make 12 gallons of solution and will treat up to **3,000 sq ft.**
- **10LB BUCKET:** will make 40 gallons of solution and will treat up to **10,000 sq ft.**
- **40LB BUCKET:** will make 160 gallons of solution and will treat up to **40,000 sq ft.**



COVERAGE AREA:

- **EACH GALLON:** will cover 200-300 sq ft depending on the slope, age of the wood and how dry the wood is. Newly applied cedar will yield greater coverage. Remember: the older and drier the wood, the more product you will be needed.

HERE ARE SOME ANSWERS TO FREQUENTLY ASKED QUESTIONS ...



MADE IN USA



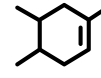
POWERFUL SURFACTANTS



LANDSCAPE SAFE



NON-STAINING



NO CHLORINE



PET SAFE



DO I USE WARM OR COLD WATER? DO I NEED TO STIR FOR FULL 15 MINS?

WARM IS BEST, BUT YOU CAN USE COLD IF YOU DO NOT HAVE ACCESS TO WARM WATER. THE PRODUCT WORKS BECAUSE OF THE OXYGEN, IT DEVELOPS WHEN IT IS MIXED WITH WATER. THE OXYGEN NEEDS TIME TO WARM.



HOW LONG UNTIL I CAN RINSE THE PRODUCT OFF ONCE APPLIED?

AFTER THE PRODUCT IS APPLIED TO THE ENTIRE SURFACE, YOU CAN START TO RINSE RIGHT AWAY. YOU WILL SEE THE PRODUCT WORKING NOT LONG AFTER APPLICATION. AT MAX, FOR BEST RESULTS, RINSE OFF WITHIN 45 MINUTES OF INITIAL APPLICATION. YOU DO NOT WANT TO LET THIS PRODUCT BAKE IN THE SUN ON HOT DAYS.



WHAT SHOULD I MIX THE PRODUCT IN? WHAT SHOULD I USE TO APPLY?

WE RECOMMEND MIXING PRODUCT IN A 5 GALLON MIXING BUCKET, PLASTIC DRUM OR TRASH BARREL. THE EASIEST WAY IS WITH A GARDEN STYLE PUMP SPRAYER WHICH INVOLVES BEING ABLE TO ACCESS YOUR ROOF, DECK, SIDING OR WHATEVER SURFACE YOU ARE CLEANING. WHAT THE PROFESSIONALS USE IS A GAS POWERED WATER TRANSFER PUMP, THEY MIX A BIG BATCH AND HOOK UP A GARDEN HOSE TO THE TRANSFER PUMP AND FROM THE GUTTERS EDGE CAN SPRAY ANY ROOF. THESE TRANSFER PUMPS CAN BE RENTED AT TOOL RENTAL COMPANIES OR A SECOND OPTION IS AN ELECTRIC SUBMERSIBLE WATER TRANSFER PUMP. SOMETHING YOU WOULD USE TO PUMP OUT A SWIMMING POOL OR SPA, THESE ARE INEXPENSIVE AND CAN BE BOUGHT AT ANY HOME IMPROVEMENT CENTER, YOU JUST MIX UP A BATCH IN A TRASH BARREL, HOOK UP A GARDEN HOSE TO THE OUTFLOW OF THE PUMP AND SPRAY YOUR ROOF, THE BEST NOZZLE TO SPRAY YOUR ROOF IS A PISTOL STYLE NOZZLE.



WHAT DO I USE TO RINSE OFF THE PRODUCT?

A PRESSURE WASHER WILL YIELD BEST RESULTS. FOR SOFT WOODS LIKE CEDAR OR PINE, APPLY ABOUT 500 TO 600 PSI. FOR HARDER WOODS, YOU CAN GO UP TO 1200 TO 1500 PSI. CHOOSE THE RIGHT TIP TO USE AS WELL. FOR WOOD CLEANING, GENERALLY A FAN TIP (USED CAREFULLY) WILL WORK BEST. TOO HIGH A PSI CAN "FUR" WOOD, LEAVING IT DAMAGED. WASH SAFE'S TIPS ARE SPECIALLY BORED OUT TO REDUCE THE PSI OF ANY PRESSURE WAND BY 80%. KEEP SPRAYER 6-12" AWAY FROM SURFACE.



DO I PUT THE PRODUCT ON A DRY OR WET SURFACE?

OUR PRODUCTS ARE DESIGNED TO BE APPLIED ONTO A DRY SURFACE. WHEN A SURFACE IS WET, IT MAKES IT DIFFICULT FOR THE PRODUCT TO STICK TO THAT SURFACE AND CLEAN LIKE IT IS SUPPOSED TO. A DRY SURFACE IS OPTIMAL FOR BEST RESULTS.



WILL THE PRODUCT REMOVE PAINT FROM SURFACES?

WASH SAFE PRODUCTS WILL CERTAINLY REMOVE STAIN FROM SURFACES, HOWEVER IT CAN REMOVE SURFACE PAINT TO A DEGREE. IF YOU ARE WANTING TO WASH PAINTED SURFACES, YOU WILL NEED TO MAKE THE FORMULA WEAKER TO JUST "CLEAN" AND NOT TO TAKE OFF ANY PAINT. WE RECOMMEND 1/4 CUPS PER GALLON. IT WILL REMOVE BLEACHING OIL AND OTHER OIL/WATER-BASED STAINS.



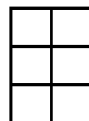
WHY CAN'T I APPLY USING A SIPHON TYPE OR PRESSURE WASHER?

FOAMING ACTION HELPS THE PRODUCT TO STAY ON THE SURFACE TO WORK. PUTTING IT THROUGH, A PRESSURE WASHER OR A SOAP TYPE SIPHON IT DILUTES THE PRODUCT AND IT DOES NOT GIVE IT ENOUGH TIME TO BE ACTIVATED. THE PRODUCT WORKS BECAUSE OF THE OXYGEN, IT DEVELOPS WHEN IT IS MIXED WITH WATER. THE OXYGEN NEEDS TIME TO FORM.



WHAT SPEED SHOULD IT BE APPLIED?

STEADY SWEEPING MOTIONS TO APPLY THE CLEANING PRODUCT IS RECOMMENDED, TOO FAST AND IT WILL NOT BE ABSORBED. TOO SLOW AND YOU CAN USE MORE THAN WHAT IS NECESSARY. YOU WANT ENOUGH TO COAT THE SURFACE WITHOUT DRENCHING IT. YOU WANT TO MAKE SURE YOU ARE FULLY COVERING THE SURFACE AREA YOU WILL BE CLEANING.



SHOULD I AVOID WINDOWS? WHAT HAPPENS IF I GET IT ON THEM?

YES, YOU'LL WANT TO AVOID WINDOWS AND METAL SURFACES THAT HAVE NOT YET OXIDIZED. IT IS BEST IS TO RINSE BEFORE AND AFTER OR TAPE OFF YOUR WINDOWS AND REMOVE SCREENS WHILE CLEANING A HOUSE. ALTHOUGH THIS IS NOT A COMMON OCCURRENCE., IF PRODUCT DRIES ON WINDOWS, WE HAVE FOUND THAT YOU CAN USE OVEN CLEANER, MAGIC ERASER, OR SOFT SCRUB TO REMOVE THE RESIDUE.



WE WANT TO SEE YOUR HOME IMPROVEMENTS!

*Tag us in a photo with #ResultsByWashSafe for a chance to win a \$10 gift card from **STARBUCKS™***



BEFORE

Want to win a Starbucks gift card? It's easy! Tag us in your Before & Afters on social media with the Hashtag #ResultsByWashSafe and @washsafe for a chance to win. Let us know what products you're using to get your results like in the example below. We'll pick a new winner every month. Winners will be chosen based on results, originality and creativity. Humor will score you points too!



AFTER

Check out this CEDAR CLEANING before & after! You'll never find better, safer products for cedar restoration. Wash Safe's Cedar Wash cleans safely and effectively, as shown, without harmful bleaches or chemicals. We're proud that this before & after shows transformative results without harming landscaping or animals. #ResultsByWashSafe