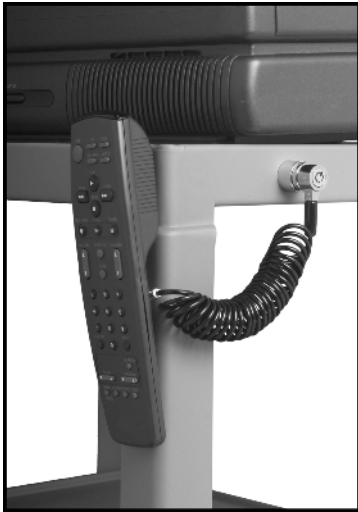


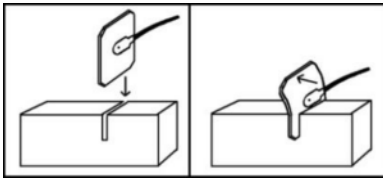
Flexguard Security System Security Tether & Retractor Installation Instructions



Security tethers and retractors have an end that attaches the cable to the device and an end that anchors the cable to the furniture. There are four types of cable ends.



Molding Adhesive Plates



Skip this step if you are mounting the plate to a flat surface. The security tether plates are made from light gauge steel and can be easily molded to match most curved surfaces using pliers or the bending block (model BT). Leave the paper backing on the adhesive pad. Slide the flex plate into the slot in the bending block. Gently apply pressure to the plate with your thumbs. Remove the plate from the bending block and check it against the curved surface. Repeat until the curve in the plate matches the curved surface.

Mounting Adhesive Plates

Adhesive plates are the most popular and versatile cable ends. Follow these simple instructions for mounting new and replacement plates:



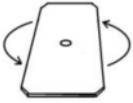
1. Insert the ball end of the cable through the top of the plate.

2. Place the domed cap over the ball. Slide the bare section of the cable behind the ball to the top of the slot in the cap.

3. Press the cap through the hole in the plate so the base of the cap is seated against the underside of the plate. Your security tether with plate is ready to be mounted.

4. Be sure that the surface where the plate will be mounted is clean and dry. Remove the paper backing and press the plate into place. The adhesive will set immediately and fully cure in 24 hours.

Removing Adhesive Plates

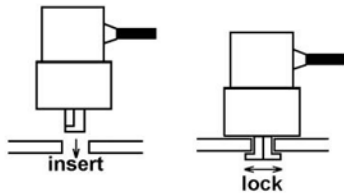


3M Base: Properly mounted adhesive plates should be considered permanent. Removal of the plate may result in damage to the surface. Use pliers to grab the sides of the plate. Apply slow, twisting pressure to break the adhesive bond (see figure to the left). Remove adhesive residue with a citrus based solvent such as Goo Gone. Do not re-use plates that have been removed.

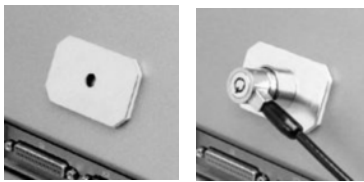
Rubber Base: Rubber base adhesive plates mounted with super glue are significantly more difficult to remove. Apply heat to the plate with a heat gun to weaken the adhesive bond. *Heat guns are dangerous. Follow the heat gun manufacturer's instructions for proper use.* Gently pry the plate from the surface with a paint scraper or screw driver. Remove residue with an acetone-base nail polish remover. Nail polish remover may damage certain materials. Always test prior to use.

Attaching Scissor Locks

The scissor lock is an optional cable end for security tethers that enables quick removal of the cable. Use the scissor lock end to attach a cable to computers, iPads, tablets, projectors, televisions, remote controls, retail display items, or furniture.



Option 1: Locate a 9/32" hole in the surface where you want to attach the scissor lock. Insert the locking tabs of the scissor lock into the hole. Turn the key to expand the locking tabs and lock the scissor lock. The scissor lock will lock through any surface up to 1/8" thick. If a suitable hole is not available, you can drill a 9/32" hole. This is an excellent way to attach the scissor lock to media carts and other sheet metal furniture.



Option 2: Many devices such as tablets and laptops do not have a suitable hole to attach the scissor lock. For these devices it is best to mount the scissor lock adhesive plate (model AP932) where you want to attach the scissor lock. The adhesive plate can be mounted to any flat surface. Follow the directions on the previous page for mounting the adhesive plate. Lock the scissor lock to the 9/32" hole in the plate.

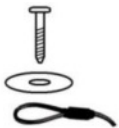
Attaching Loops & Eyelets



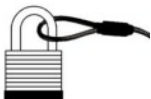
Option 1: Cinch the looped end of the security tether around an object prior to mounting the scissor lock or plate on the other end of the tether.



Option 4: Security tethers can be ordered with an unfinished end (U). A loop sleeve is included with this end. Form a permanent loop around your attachment point with the loop sleeve. The fitting can be crimped with a hammer, vice grip, or crimping tool.



Option 2: Use a washer and screw to attach the loop or eyelet to the furniture.



Option 3: Use a padlock or plastic tie wrap to attach the loop or eyelet to the furniture or display item.



Option 5: Use the set screw collar to form a removable loop around the end of the tether.