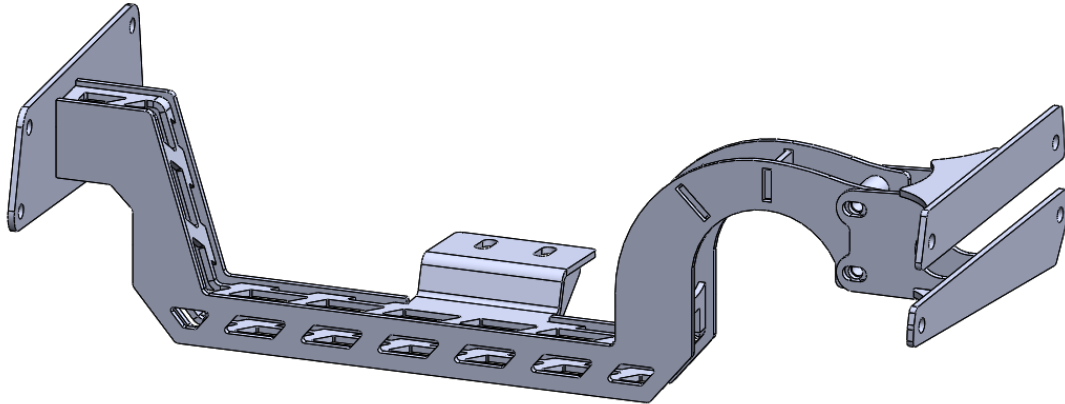




FORD 1992-1996 ZF5 TRANSMISSION CROSSMEMBER INSTALLATION INSTRUCTIONS



Components Included	
(1) Ford 1992-1996 ZF5 Trans Cross Member	
(1) Ford 1992-1996 ZF5 Trans Cross Member Drill Guide	
Hardware Included	
(8) 1/2 X 1.75 Bolt	(10) 1/2 Nylock Nut
(2) 1/2 X 4 Bolt	(20) 1/2 Flat Washer
Tools Required	
Jack	18mm Socket/Wrench
Jack Stands	3/4" Socket/Wrench
Grinder/Acetylene Torch	Torque Wrench
Drill	Hammer & Drift/Air Hammer
1/4" & 1/2" Drill Bit	

WARNING

RYD Motorsports recommends the installation to be performed by a professional technician/professional shop.

Read instructions and warning carefully before installation and operation. Failure to do so could result in damage to your vehicle.

Installation Instructions

1. Support the transmission and remove the stock transmission cross member.
2. Remove the stock leaf spring hangers by grinding or torching the heads of these rivets. Using a hammer and drift or air hammer, remove the rivets. Using a 1/2" drill bit, drill out the rear two holes (Figure 1). Clean/remove debris from the frame rails where the cross member will be mounted.

Note Move wiring and fuel lines on the inside of the driver's side frame rail away prior to grinding, hammering, torching or drilling.

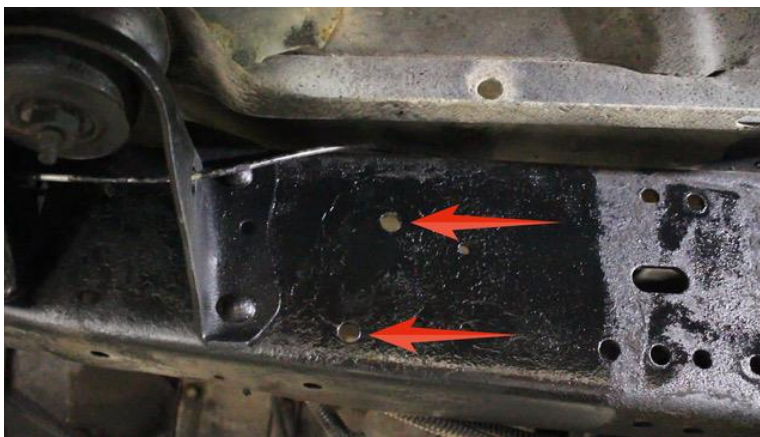


Figure 1.

3. Hold the drill guide up to the frame and align the front two holes of the bracket with the rear two holes of the leaf spring hanger. Using two 1/2 X 1.75" bolts, attach the drill guide to the frame ensuring that it is parallel with the bottom of the frame (Figure 2). Drill the two rear pilot holes with the 1/4" drill bit using the drill guide, then drill them out using a 1/2" bit.

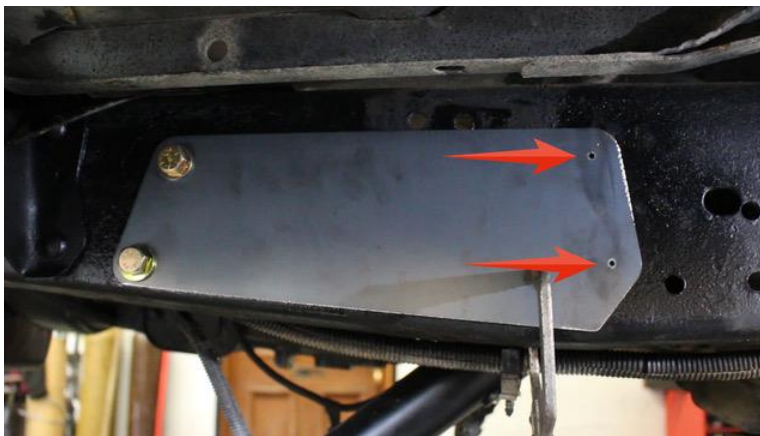


Figure 2.

4. Repeat steps 2-3 on the opposite side of the truck.

5. Install the driver's side frame plate on the inside of the frame using the 1/2 X 1.75" bolts. Run the hard lines through the cut out in the bracket and the wiring harness underneath the bracket (Figure 3).



Figure 3.

6. Disconnect the front drive shaft from the front differential and let it hang down. Angle the transmission cross member up to the passenger side frame rail and rotate the end up to the driver side (Figure 4). Using the 1/2 X 1.75" bolts, loosely attach the frame plate to the frame (Figure 5) and using the 1/2 X 4" bolts attach the driver's side plate to the cross member (Figure 6).



Figure 4.



Figure 5.

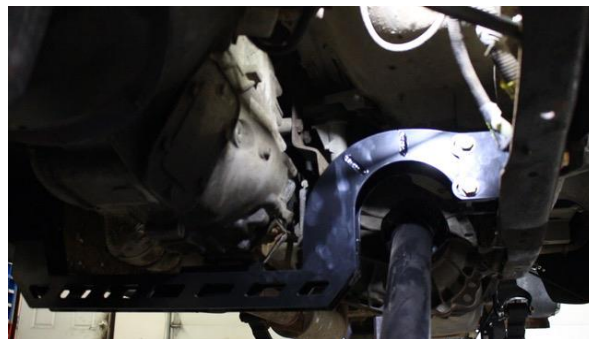


Figure 6.

7. Tighten all the transmission cross member mounting bolts. Lower the transmission and tighten transmission mount. Reconnect the front drive shaft.

**VERIFY ALL FASTENERS ARE PROPERLY TORQUED BEFORE DRIVING VEHICLE
RETORQUE ALL NUTS, BOLTS AND LUGS AFTER 100 KILOMETERS AND
PERIODICALLY THEREAFTER**