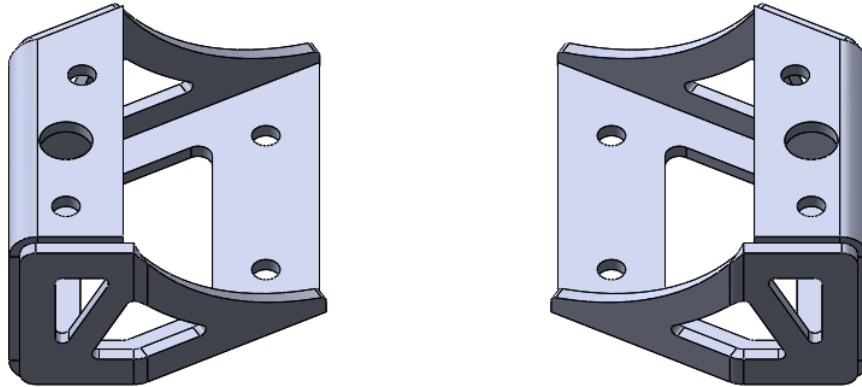




FORD 1992-1996 SWAY BAR BRACKET INSTALLATION INSTRUCTIONS



Components Included	
(1) Ford 1992-1996 DS Sway Bar Bracket	
(1) Ford 1992-1996 PS Sway Bar Bracket	
Hardware Included	
(8) 3/8 X 1.25 Bolt	(16) 3/8 Flat Washer
(8) 3/8 Nylock Nut	
Tools Required	
9/16" Socket/Wrench	
Torque Wrench	

WARNING

RYD Motorsports recommends the installation to be performed by a professional technician/professional shop.

Read instructions and warning carefully before installation and operation. Failure to do so could result in damage to your vehicle.

Installation Instructions

1. Clean/remove debris from the frame rail where the sway bar drop bracket will be installed (Figure 1).



Figure 1.

2. Install the sway bar bracket on the frame using 3/8 X 1.25" bolts. When installed the open side of the bracket will face inwards and towards the rear of the truck (Figure 2).



Figure 2.

3. Repeat steps 1 and 2 on the opposite side of the truck. Now you are ready to install your 05+ sway bar.

**VERIFY ALL FASTENERS ARE PROPERLY TORQUED BEFORE DRIVING VEHICLE
RETORQUE ALL NUTS, BOLTS AND LUGS AFTER 100 KILOMETERS AND
PERIODICALLY THEREAFTER**