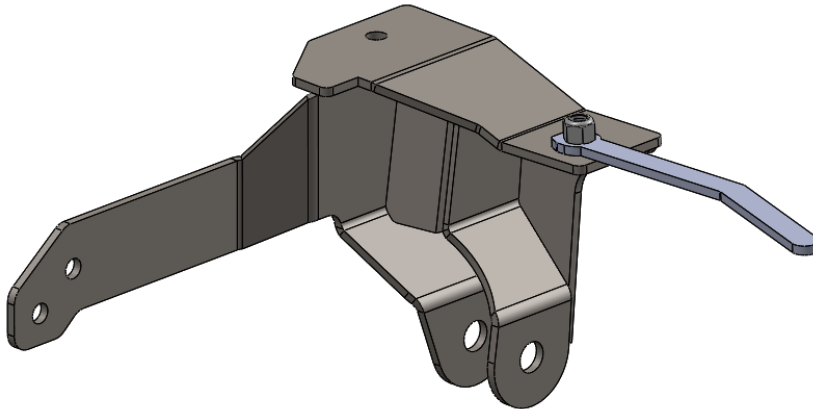




FORD 1992-1996 0-3" TRAC BAR BRACKET INSTALLATION INSTRUCTIONS



| | |
|--|---------------------------|
| Components Included | |
| (1) Ford 1992-1996 0-3" Trac Bar Bracket | |
| (1) Ford 1992-1996 0-3" Trac Bar Bracket Nut Tab | |
| Hardware Included | |
| (3) 1/2 X 1.5 Bolt | (4) 1/2 Nylock Nut |
| (1) 1/2 X 2.5 Bolt | (7) 1/2 Flat Washer |
| Tools Required | |
| Jack | 30mm Socket/Wrench |
| Jack Stands | 3/4" Socket/Wrench |
| Grinder/Acetylene Torch | Torque Wrench |
| Drill | Hammer & Drift/Air Hammer |
| 1/2" Drill Bit | |

WARNING

RYD Motorsports recommends the installation to be performed by a professional technician/professional shop.

Read instructions and warning carefully before installation and operation. Failure to do so could result in damage to your vehicle.

Installation Instructions

1. On the front driver's side frame rail, torch or grind the head of these two rivets off (Figure 1). Using a hammer and drift or air hammer, remove the rivets. Clean/remove debris from frame rail where bracket will be attached.



Figure 1.

****Note**** If changing pitman arm, it will be much easier to do so prior to installing trac bar bracket.

2. Hold the trac bar bracket up to the frame rail and using the 1/2 X 1.5" bolt in the rear hole of the part, snug it up the frame rail. Feed the nut tab into the opening of the driver's side frame rail and thread the 1/2 X 2.5" bolt into the tab from the front hole of the part and snug it up (Figure 2). Ensure the cross member plate is behind the front edge of the engine cross member.



Figure 2.

3. Remove the nut holding the power steering line on the front of the engine cross member.

****Note**** Power steering line on the engine cross member will have to be manipulated so it is not hit while drilling.

4. With the bracket snug to the frame rail, use a 1/2" drill bit and the two holes in the cross member plate as a drilling guide (Figure 3). Drill the two holes and using the remaining two 1/2 X 1.5" bolts, snug up the cross member plate to the engine cross member and re-install the oil cooler line on the front of the engine cross member.



Figure 3.

5. Go over all the mounting bolts and tighten them down. You are now ready to bolt in your 05+ stock trac bar (Figure 4).



Figure 4.

**VERIFY ALL FASTENERS ARE PROPERLY TORQUED BEFORE DRIVING VEHICLE
RETORQUE ALL NUTS, BOLTS AND LUGS AFTER 100 KILOMETERS AND
PERIODICALLY THEREAFTER**