



FOOD EQUIPMENT

SERVING THE FOOD INDUSTRY SINCE 1951

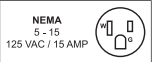
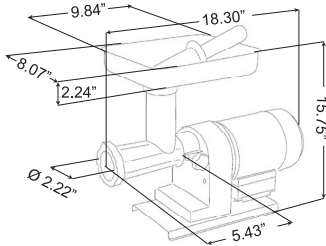


ELITE GRINDERS

RESIDENTIAL ELITE SERIES



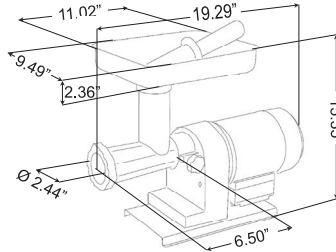
11029 / MG-IT-0008



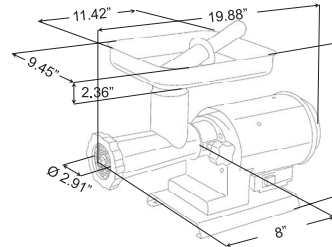
COMMERCIAL ELITE SERIES



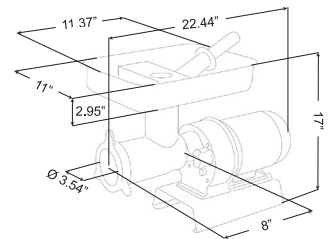
41419 / MG-IT-0012



41421 / MG-IT-0022



11013 / MG-IT-0032



TECHNICAL SPECIFICATION	# 8 LIGHT-DUTY	# 12 MODERATE-DUTY	# 22 MODERATE-DUTY	# 32 HEAVY-DUTY
ITEM NUMBER	11029	41419	41421	11013
MODEL	MG-IT-0008	MG-IT-0012	MG-IT-0022	MG-IT-0032
HP	0.45 HP	0.6 HP	1.25 HP	1.5 HP
MOTOR SIZE	370 Watts	440 Watts	920 Watts	1100 Watts
RPM	150	100	100	110
THROAT OPENING	2" approx	2" approx	2" approx	2" approx
ELECTRICAL	110V/60/1	110V/60/1	110V/60/1	110V/60/1
WEIGHT	25 lbs.	27 lbs.	40 lbs.	77 lbs.
PACKAGING WEIGHT	27 lbs.	29 lbs.	42 lbs.	80 lbs.
DIMENSION (DWH)	18.30" x 8.07" x 15.75"	19.29" x 9.49" x 15.35"	19.88" x 9.45" x 15.75"	22.44" x 11" x 17"
PACKAGING DIMENSION	26" x 20" x 20"	26" x 20" x 20"	26" x 20" x 20"	30" x 20" x 24"

OMCAN INC.

Telephone: 1-800-465-0234
 Fax: (905) 607-0234
 E-mail: sales@omcan.com
 Website: www.omcan.com



Follow us to keep up to date with the latest news and offers





SERVING THE FOOD INDUSTRY SINCE 1951

#32 Stainless Steel Meat Grinder 1.5HP

ITEM: 48888

MODEL: MG-CN-0032-E

Ideal for butcher shops, food stores & restaurants

Omcan's powerful grinders
are designed to handle large quantities
of meat with ease & speed



FEATURES

- Powerful motor can grind up to 720 - 750 lb. of meat per hour
- Durable construction with stainless steel knife, head ring, auger, and meat pan
- Permanently lubricated motor with improved grease formulation to reduce noise
- Heavy-duty handle for easy moving
- Long-lasting metal gears with roller bearings ensure smooth and reliable operation.
- Micro safety switch for meat tray
- Built-in circuit breaker
- Comes with 2 stainless steel cutting plates for coarse and fine grinding
- Includes 3 stuffing tubes

Telephone: 1-800-465-0234

Fax: (905) 607-0234

Email: sales@omcan.com

Website: www.omcan.com



Authorized Dealer

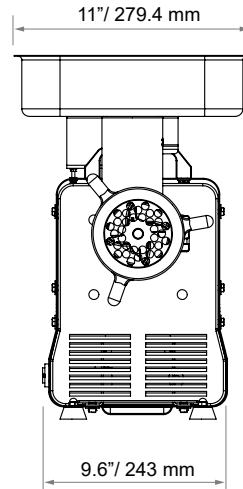
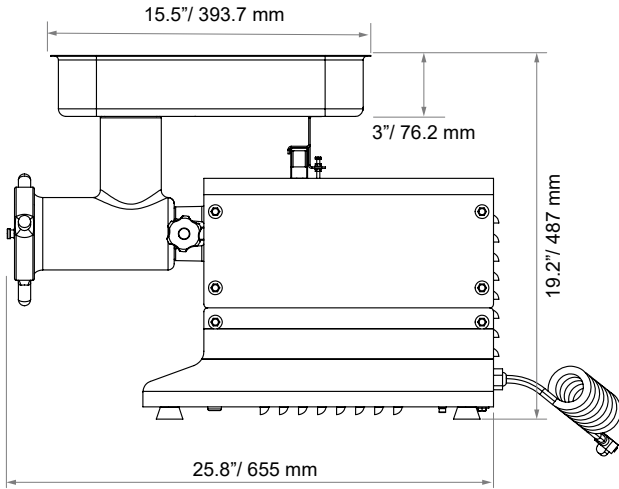


#32 Meat Grinder 1.5HP

ITEM: 48888



TECHNICAL DRAWING & DIMENSIONS



SPECIFICATIONS

Item Number	48888
Model	MG-CN-0032-E
Hub size	#32
Usage	Medium Duty
Power	1.5 HP/ 1,100 W
Electrical	120V / 60Hz / 1Ph
Transportation type	Gear-Driven
Capacity	720 - 750 lb. / 326.6 - 340 kg per hour
Includes	4.5 mm + 10 mm plates 3 stuffing tubes + 1 meat stomper
Outlet Speed	110 RPM or 150 RPM
Micro safety switch for meat tray	YES
Meat Tray Size	15.5" x 11" x 3" / 393.7 x 279.4 x 76.2 mm
Net Dimensions (DWH)	25.8" x 12.2" x 19.2" / 655 x 310 x 477 mm
Gross Dimensions (DWH)	26" x 16.6" x 16.8" / 660.4 x 421.6 x 426.7 mm
Net weight	65.7 lbs/ 30 kg
Gross weight	71.5 lbs/ 32.4 kg



Large stainless steel meat tray



Non-slip rubber feet



Large stainless steel auger



Head-locking knob



Improved auger design that speeds up meat grinding process and reduces jams and clogs



Large all-metal gear structure provides durability, roller bearing for smoother and quieter running



Larger-bite auger grabs more meat to improve production efficiency



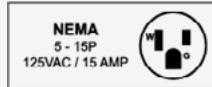
Stainless steel accessories



Includes food-grade stuffing tube and meat stomper



Dust-proof switch





FOOD EQUIPMENT

SERVING THE FOOD INDUSTRY SINCE 1951

NO. 32 STAINLESS STEEL MEAT GRINDER

Item #: 39714

Model: MG-IT-0032-C

The MG-IT-0032-C heavy-duty meat grinder/ mincer offers a great value with a proven record of dependability and performance. This electrical meat mincer is entirely made of high quality stainless steel, equipped with a safety micro switch, larger tray, hand protection and features high performance 1/4" plate and European-style knife. Ideal for any restaurant, deli or small butcher shop.



Authorized Dealer



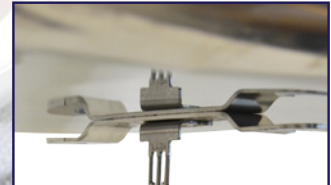
Ventilated motor with thermal protection



Structured in AISI 304 stainless steel



Features a large hopper with hand protection and ABS plastic pusher



Equipped with safety microswitch



1/4" (6mm) plate included

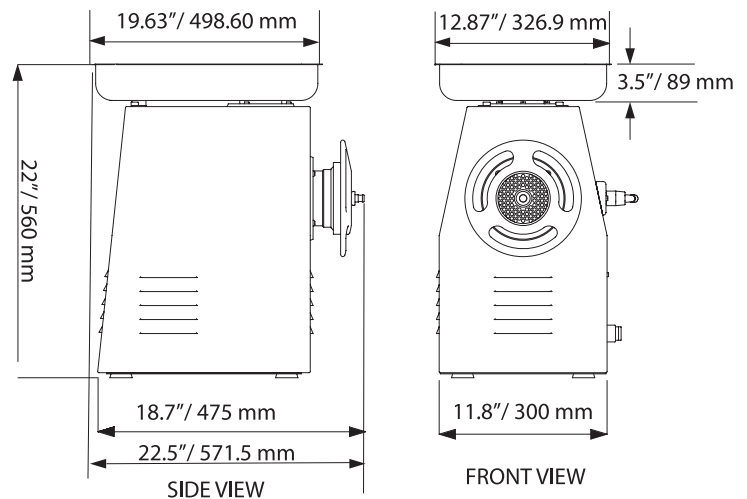


ON/OFF Switch with waterproof rubber protection

TECHNICAL SPECIFICATION

ITEM NUMBER	39714
MODEL	MG-IT-0032-C
POWER	3 HP. 2.2 kW
PRODUCTION/ HR	600 kg/ 1320 lbs.
ELECTRICAL	220V/ 60 Hz / 1 Ph
AMPS	16.6 A
THROAT OPENING	2.75" / 69.85 mm
DIMENSIONS (DWH)	22.5" X 11.8" X 22" / 571.5 x 300 x 560 mm
PACKAGING DIMENSIONS	24.4" x 16.9" x 25.6" / 620 X 430 X 650 mm
NET WEIGHT	52 kg. / 114 lbs.
GROSS WEIGHT	55 kg / 121 lbs.

TECHNICAL DRAWING AND DIMENSIONS



OMCAN INC.

Telephone: 1-800-465-0234

Fax: (905) 607-0234

E-mail: sales@omcan.com

Website: www.omcan.com



Follow us to keep up to date with the latest news and offers

