



MEAT SLICERS

S SERIES HORIZONTAL GEAR-DRIVEN SLICERS - 12.3", 14" & 15" BLADE

Item: 44006/ 39631/ 38915

Model: MS-IT-0313-H/ MS-IT-0350-H/ MS-IT-0370-H



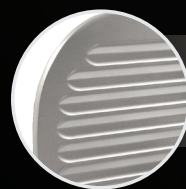
OMAS "S" SERIES

They are especially designed to cut fresh meat. The large horizontal carriage has a double sliding table, specifically designed to cut fresh meat by providing a long stroke depth.

12.3" BLADE Model MS-IT-0313-H

14" BLADE Model MS-IT-0350-H

15" BLADE Model MS-IT-0370-H



FEATURE
SUPERGLIDE



Authorized Dealer



LIMITED WARRANTY
PARTS AND LABOR



NEMA
5 - 15
125 VAC / 15 AMP



MEAT SLICERS

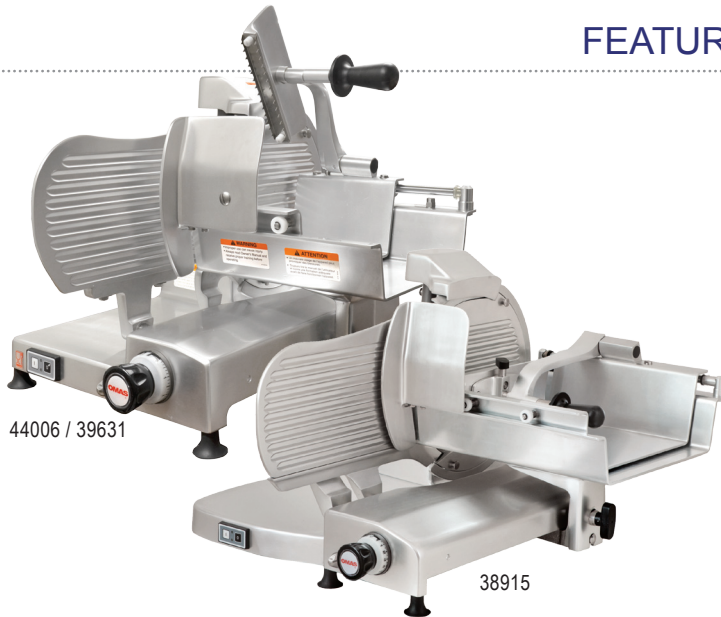
S SERIES HORIZONTAL GEAR-DRIVEN SLICERS - 12.3", 14" & 15" BLADE



OMAS "S" SERIES SLICERS

They are especially designed to cut fresh meat. The large horizontal carriage has a double sliding table, specifically designed to cut fresh meat by providing a long stroke depth. The high performance gear driven motor offers a constant blade speed throughout the cut, for precision slicing. The carriage rolls easily on ball bearings and the anodized aluminium body provides easy cleaning. Our "S" Series slicers can be cleaned without tools. The carriage, end grip, and blade cover are easily removable. The machine is made of anodized aluminium alloy, which is resistant to food-acids. The smooth finish is durable and easy to clean. The flow line design and the rounded corners of the polished anodized aluminium body makes the after use cleaning easy. The high carbon steel, hard chromed blade has a hollow ground taper that permits sharpening for full life of the blade and to facilitate the penetration and the slice detachment.

FEATURES

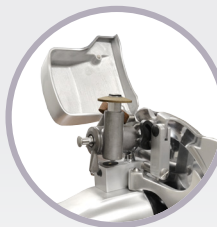


- **Superglide:** Specially treated gauge-plate and blade cover for a smoother performance that ensures precision cuts at all times
- **Additional safety features:** Fixed blade ring guard; aluminium thumb guard; interlock for carriage disassembly; NVR (No Voltage Release) switch and protections on the sharpener and blade
- In Compliance With Province Of Quebec Safety Standards (Item 39631 & 38915 Only)
- **New Design:** Enlarged receiving surface (Item 38915 Only)

DETAIL IMAGES



Superglide



Built-in sharpener



Interlock for carriage disassembly



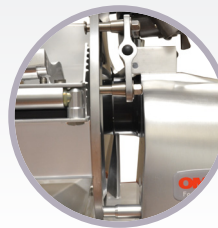
Control Pushbutton (no-voltage-release switch)



Ring guard



Aluminium thumb guard



Ergonomically designed for easy cleaning



Slice thickness control

OMCAN INC.

Telephone: 1-800-465-0234
Fax: (905) 607-0234
E-mail: sales@omcan.com
Website: www.omcan.com



Follow us to keep up to date with the latest news and offers



MEAT SLICERS

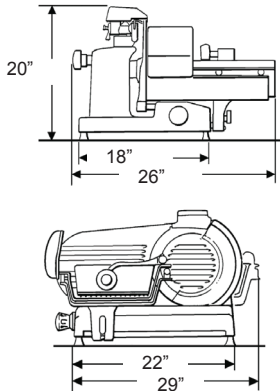
S SERIES HORIZONTAL GEAR-DRIVEN SLICERS -

12.3", 14" & 15" BLADE



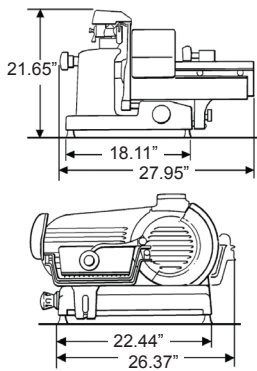
TECHNICAL SPECIFICATION

12.3" Horizontal Gear-Driven Slicer (MS-IT-0313-H)



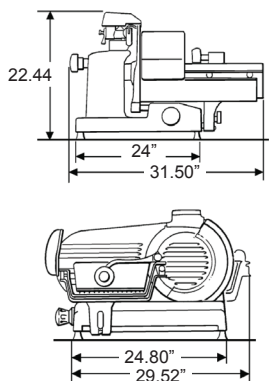
| Technical Specification | | | |
|-----------------------------|---------------------------|------------------------|------------------------------|
| ITEM NUMBER | 44006 | RPM | 250 |
| MODEL | MS-IT-0313-H | VOLTAGE | 110V/60/Hz/1 |
| BLADE | 12 5/16"/313mm | WEIGHT | 84 lbs/ 38 kg |
| POWER | 0.40 HP / 0.30 kW | GROSS WEIGHT | 101 lbs/ 46 kg |
| CHEESE SLICING [†] | | DIMENSIONS (WDH) | 29"x26"x20" / 737x440x508 mm |
| SLICING VOLUME* | 8 hours or more | GROSS DIMENSIONS | 33"x28"x27" / 838x711x686 mm |
| CUTTING SIZE | 10.63"x8.86" / 270x225 mm | ADDITIONAL INFORMATION | -- |
| CUT THICKNESS | 0-25mm | | |

14" Horizontal Gear-Driven Slicer (MS-IT-0350-H)



| Technical Specification | | | |
|-----------------------------|----------------------------|------------------------|--|
| ITEM NUMBER | 39631 | RPM | 250 |
| MODEL | MS-IT-0350-H | VOLTAGE | 110V/60/Hz/1 |
| BLADE | 14"/350mm | WEIGHT | 110 lbs/ 50 kg |
| POWER | 0.40 HP / 0.30 kW | GROSS WEIGHT | 112 lbs/ 51 kg |
| CHEESE SLICING [†] | | DIMENSIONS (WDH) | 26"x28"x21.7" / 660x711x551 mm |
| SLICING VOLUME* | 8 hours or more | GROSS DIMENSIONS | 34"x31"x26" / 863x787x660 mm |
| CUTTING SIZE | 12.2" x 9.84" / 310x205 mm | ADDITIONAL INFORMATION | In compliance with Province of Quebec safety standards |
| CUT THICKNESS | 0-25mm | | |

15" Horizontal Gear-Driven Slicer (MS-IT-0370-H)



| Technical Specification | | | |
|-----------------------------|------------------------------|------------------------|--|
| ITEM NUMBER | 38915 | RPM | 250 |
| MODEL | MS-IT-0370-H | VOLTAGE | 110V/60Hz/1 |
| BLADE | 15/370mm | WEIGHT | 125 lbs/ 56.7 kg |
| POWER | 0.40 HP / 0.30 kW | GROSS WEIGHT | 140 lbs/63.5 kg |
| CHEESE SLICING [†] | | DIMENSIONS (WDH) | 31.5"x29.5"x22"/800x749x559 mm |
| SLICING VOLUME* | 8 hours or more | GROSS DIMENSIONS | 36"x34"x27" / 914x864x686 mm |
| CUTTING SIZE | 14.56" x 10.23" / 370x260 mm | ADDITIONAL INFORMATION | In compliance with Province of Quebec safety standards |
| CUT THICKNESS | 0-25mm | | |

† CHEESE SLICING RATINGS ← NOT RECOMMENDED ← POOR ← AVERAGE ← GOOD ← EXCELLENT →

* Results may vary due to product consistency and temperature

OMCAN INC.

Telephone: 1-800-465-0234
 Fax: (905) 607-0234
 E-mail: sales@omcan.com
 Website: www.omcan.com



Follow us to keep up to date with the latest news and offers

