



Equipment for the Foodservice Industry

value + quality + service

Work Top Refrigeration

FWDR2-60VC



FWDR2-60VC

Features

Features

- Exterior & interior stainless steel construction
- Environmentally friendly R290 refrigerant
- Heavy duty Embraco compressor
- Self-closing and stay open door
- Efficient refrigeration system
- Recessed door handle
- Removable gasket that is easy to clean and replace
- Casters for easy movement
- Pre-installed shelves

Warranty

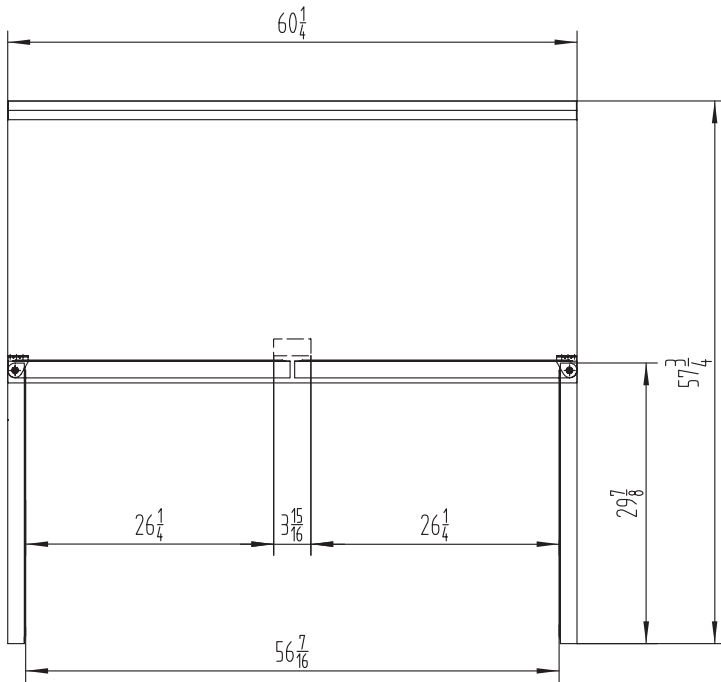
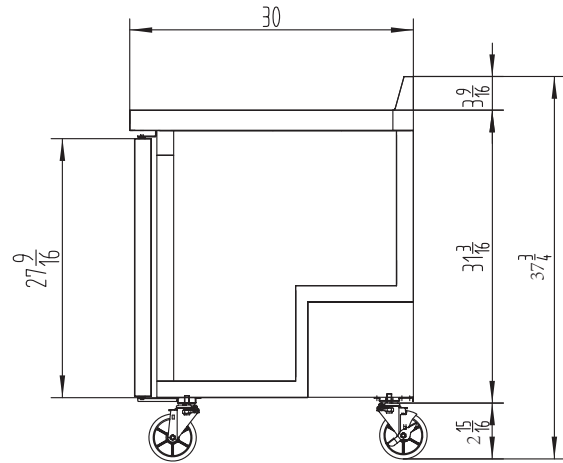
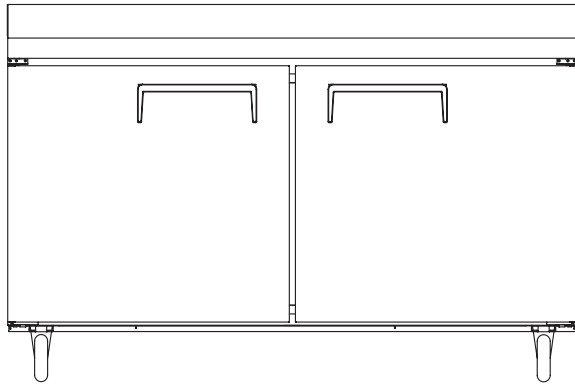
- One year parts and labour; Five years on compressor
- Specifications subject to change without notice



WARRANTY
INFORMATION
One year parts and
labour. Five years on
compressor



FWDR2-60VC Specifications



Model	Refrigerant	Doors	Shelves	Dimension (mm) (inch)			HP	Voltage	Amps	Capacity (L) (Cu Ft.)	Net Weight (KG) (LBS)	Temperature Range	NEMA Config.
				L	D	H							
FWDR2-60VC	R290	2	2	1530	762	919	1/3	115/60	2.6	487	106	-8 ~ -1°C	5-15P ⓘ
				60.2	30.0	36.2				17.2	233	-22 ~ -18°F	