



Equipment for the Foodservice Industry

value + quality + service

X-LINE 29" Glass Single Door Black Cooler

Model No:

C1-27GDVCX



C1-27GDVCX

Features

Features:

- Evaporator fan motor that stops when door is open to conserve energy
- Removable gasket that is easy to clean and replace
- Adjustable/removable plastic coated wire shelves
 - Shelves can be set-up to hold standard full size hotel pans
- Bottom-mounted cooling unit is easy to remove and clean
- Outstanding temperature preservation reduces energy consumption via foamed-in

polyurethane cell insulation

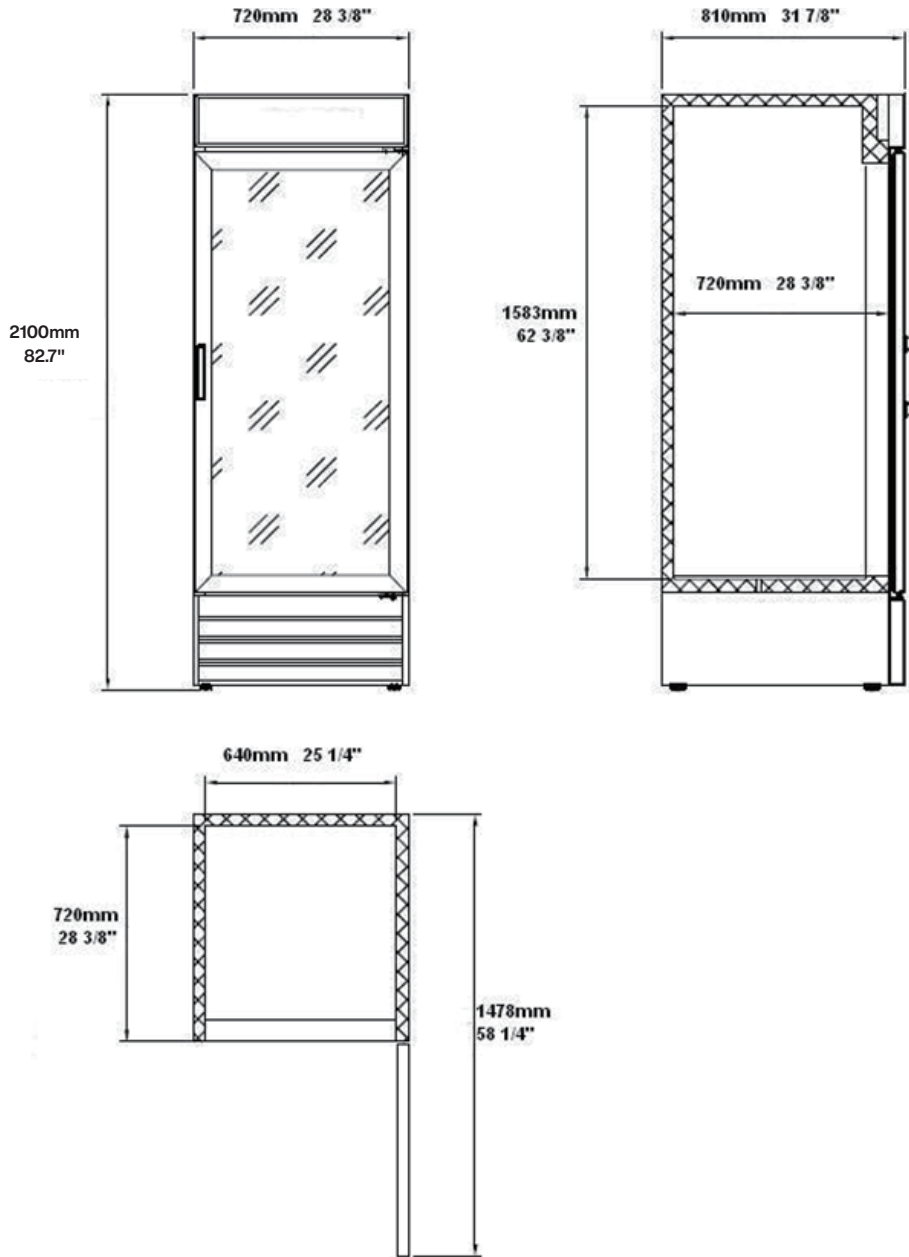
- Auto evaporation of defrosting water
- Round corner design for inner bottom shelf to facilitate easy cleaning
- Cold air circulation via fan for temperature balance
- Refrigeration unit holds 33°F to 41°F (-0°C to 5°C)

Warranty:

- Two year parts and labour; Five years on compressor. *For full warranty details visit <https://www.efifoodequip.com/warranty-info.php>*



C1-27GDVCX Specifications



Model	Doors	Shelves	Dimension (mm) (inch)			HP	Voltage	Amps	Capacity (L) (Cu Ft.)	Net Weight (KG) (LBS)	Temperature Range	NEMA Config.
			L	D	H							
C1-27GDVCX	1	4	720	810	2100	1/5	115/60/1	3	648	145	0.5 ~ 5°C	5-15P ⓘ
			28.3	31.9	82.7				23	320	33 ~ 41°F	

Specifications subject to change without notice.