



# 1.0 & 1.5 GALLON COFFEE BREWING SYSTEM

## CBS-1130 / 1150 EXTRACTOR® V+™ SERIES



**CBS-1131 V+**  
Single Station Coffee Brewer\*



**CBS-1132 V+**  
Twin Station Coffee Brewer\*

The new Extractor® V+™ offers tremendous operator value at a competitive price. Equipped with the basic Extractor® features such as pulse brewing and the exclusive Cascading Spray Dome™, this coffee brewer produces a steady stream of hot, delicious coffee from the manufacturers of high-quality coffee equipment for over 30 years – FETCO.



**CBS-1151 V+**  
Single Station Coffee Brewer\*



**CBS-1152 V+**  
Twin Station Coffee Brewer\*

\* Dispensers sold separately.

**FETCO®**  
TRUSTED | RELIABLE | QUALITY



## CBS-1131/2 & 1151/2 Extractor V+ Coffee Brewers

The Extractor V+ comes standard with the basic features operators need to provide an efficient and reliable coffee service for any daypart.

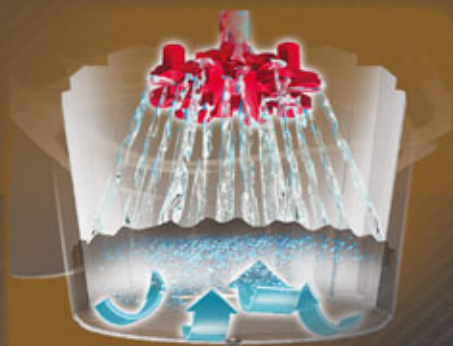
### Extractor V+ Control Panel

- Control all brewing functions and diagnostic tools with the user-friendly digital touchpad. The screen prominently displays messages, numbers and symbols as you interact with the nimble brewer software. Each batch and stop button features a vibrant LED to easily recognize brew status and selection.



### Revolutionary Cascading Spray Dome®

Exclusive to FETCO®! This unique, patented feature provides even saturation of the coffee bed for maximum flavor and aroma extraction. It resists lime build up which means fewer service calls and more time producing revenue.



### Legendary Extractor® Controls

- The V+ comes standard with programmable extraction controls that are the cornerstone to producing precise volumes of the great-tasting coffee your customers demand. Bypass available on CBS-1150 series at an additional charge. Bypass not available on CBS-1130 series.





## Efficient Design & Construction

- ▼ FETCO equipment is designed and built to standards well above most others and can deliver significant energy savings when compared to similar competitors' products.



## Four Dispenser Types Offer Even More Flexibility

- ▼ Depending on your coffee service needs, choosing the right dispenser is easy with the LUXUS® line of matching Thermal Servers, Dispensers and Airpots. Dispensers sold separately.



## Common Internal Parts

- ▼ Keep inventory and service costs down with interchangeable parts on the XT5™ systems and other V+ models.





## Water Specification

Water Inlet 3/8" Male Flare Fitting	Minimum Flow Rate 1 1/2 gpm [5.7 lpm]	Water Pressure 20-75 psig [138-517 kPa]
----------------------------------------	------------------------------------------	--------------------------------------------

**VERY IMPORTANT!** To help prevent mechanical issues and extend the life of your equipment, connect to a proper water filtration system.

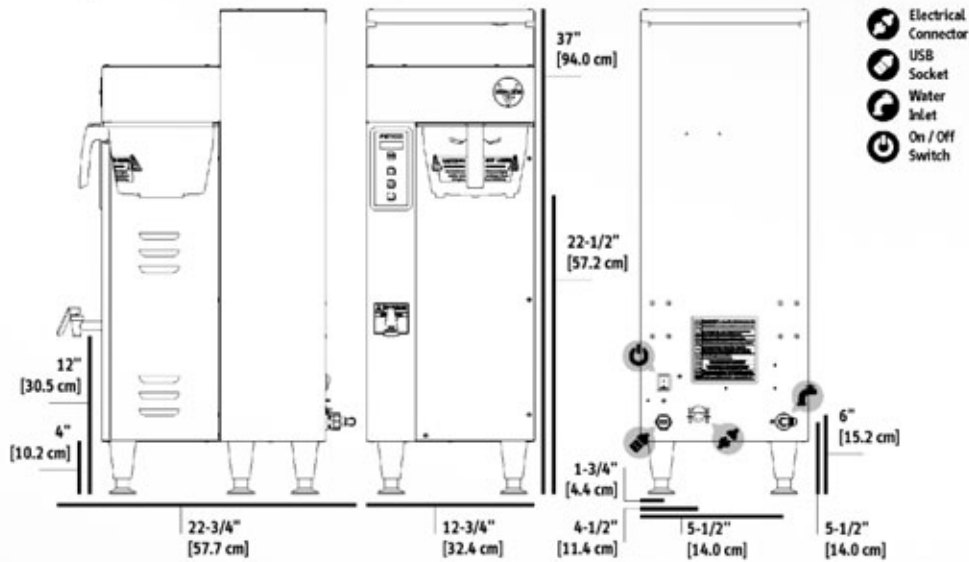
## Electrical Configuration

Configuration Code	Heater Configuration	Voltage	Phase	Wires	KW	Electrical Connection	Max Amp Draw	Gallon [Liter]/Hour
NORTH AMERICA E115151 <sup>(1)</sup>	2 x 3.0 kW	208-240	1	2+G	4.6-6.1	Terminal Block	22.4-25.8	15.3 [58.0] <sup>(2)</sup>

(1) Comes standard with plastic brew basket. Metal brew basket and bypass feature available at additional cost.  
 (2) Based on standard factory settings: 5.5 minute brew time; 0% prewet; 200°F water. 1.5 gallon / 6 liters per batch.

## Measurements

Height 37" [94.0 cm]	Width 12 3/4" [32.4 cm]	Depth 22 3/4" [57.7 cm]	Empty Weight 53 lbs [24.0 kg]	Filled Weight 106 lbs [48.0 kg]	Combined Filled Weight 129 lbs [59.0 kg] <small>BREWER + 1 FILLED L4D-15 DISPENSER</small>	Hot Water Tank Cap. 6.3 gal [24.0 l]	Shipping Weight: 57 lbs [26.0 kg]	Shipping Dimensions: 37" x 18" x 24" [94.0 x 45.7 x 61.0 cm]
----------------------------	-------------------------------	-------------------------------	-------------------------------------	---------------------------------------	--------------------------------------------------------------------------------------------------	--------------------------------------------	-----------------------------------------	--------------------------------------------------------------------



## Compatible Dispensers

#D009  
TPD-15  
1.5 Gallon  
LUXUS®  
Portable  
Thermal  
Dispenser



Product Dimensions  
(HxWxD):  
24 1/8" x 9 5/16" x 13 7/8"  
[61.3 x 23.7 x 35.2 cm]  
Weight (Empty / Filled)  
12.8 lbs [5.8 kg] /  
24.7 lbs [11.2 kg]

#D449  
L4D-15  
1.5 Gallon  
LUXUS®  
Thermal  
Dispenser



Product Dimensions  
(HxWxD):  
23" x 9" x 13 1/4"  
[58.4 x 22.9 x 33.6 cm]  
Weight (Empty / Filled)  
10.5 lbs [4.8 kg] /  
22.4 lbs [10.2 kg]

#D452  
L4S-15  
1.5 Gallon  
LUXUS®  
Thermal  
Server\*



Product Dimensions  
(HxWxD):  
14 3/4" x 9" x 12 1/2"  
[37.4 x 22.9 x 31.7 cm]  
Weight (Empty / Filled)  
7.2 lbs [3.3 kg] /  
17.6 lbs [8.0 kg]

## Serving Stations

#A150  
S4S-15-1  
Single Serving Station  
for L4S-15 Servers



#A151  
S4S-15-2  
Twin Serving Station  
for L4S-15 Servers



#A152  
S4S-15-3  
Triple Serving Station  
for L4S-15 Servers



\* Must be used with S4S Serving Stations.

## Paper Filter

#F001  
15" x 5.5"  
Standard Paper  
Coffee Filter



## Brew Basket

#B001280B1  
16" x 6"  
Stainless Steel  
Brew Basket



#B015280BN2  
16" x 6"  
Plastic Brew Basket  
w/ Brown Insert



## Cups per Hour\*

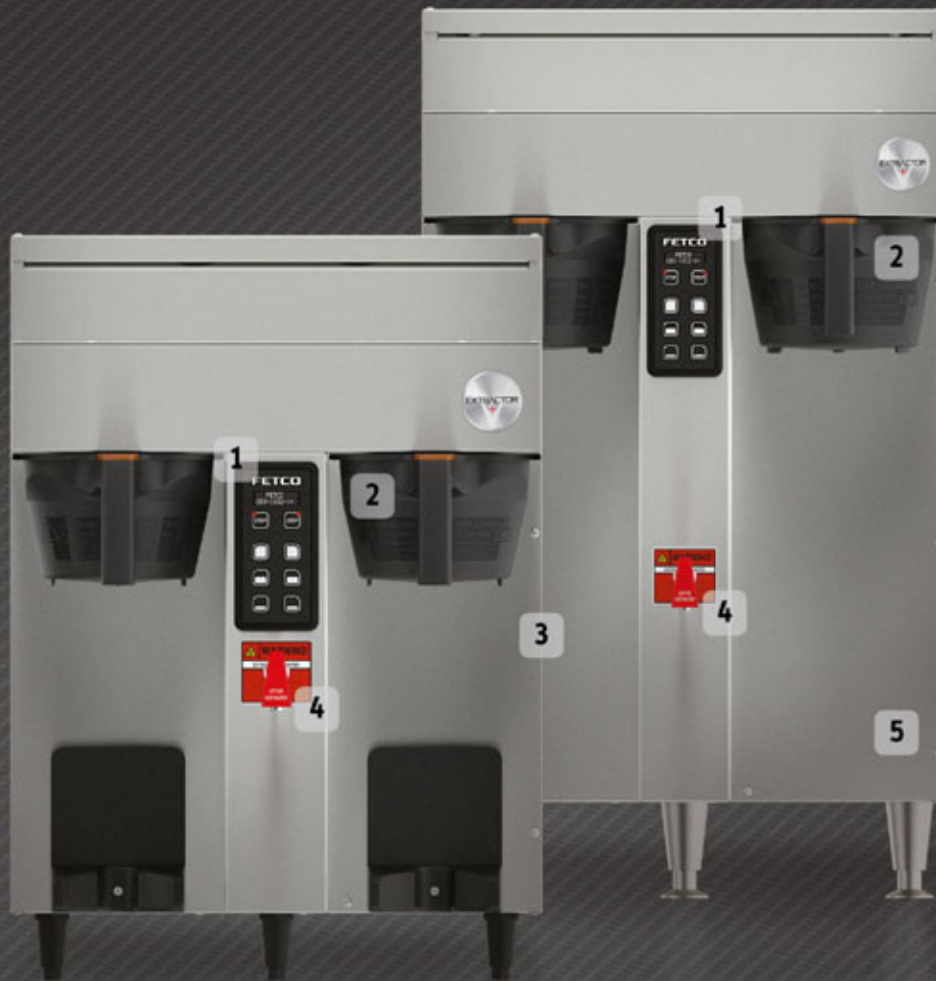
8oz. 248	12oz. 165	16oz. 124	20oz. 99
-------------	--------------	--------------	-------------

\* Approximate based on maximum power setting.

## Colored Brew Basket Handle Inserts

Blue: 1023.00180.00	Red: 1023.00190.00	Green: 1023.00191.00	Orange: 1023.00192.00
------------------------	-----------------------	-------------------------	--------------------------

# Exterior Features & Benefits




Feature	Benefit
1 > Touchpad Controls	Touchpad with bright LEDs for easy programming and batch identification.
2 > Durable Brew Basket	Durable plastic construction with removable color ID insert and built-in counter stand for easy brew prep.
3 > Mixed Material Construction	Mixed material is attractive and comfortable in any front-of-house setting.
4 > Manual Water Faucet	Safely dispenses hot water away from steam and brew basket.
5 > Stainless Steel Finish	Withstands the harshest foodservice environments and is durable and easy to clean.


Dispensers sold separately.



**FETCO**

© Copyright 2017 FETCO® is a mark of Food Equipment Technologies Company.

#BR14134 R.1

 [fetco.com](http://fetco.com)

 [info@fetco.com](mailto:info@fetco.com)

 847.719.3000  
1.800.338.2699 USA  
 847.719.3001

 Food Equipment Technologies Co.  
600 Rose Road  
Lake Zurich, IL 60047  
USA