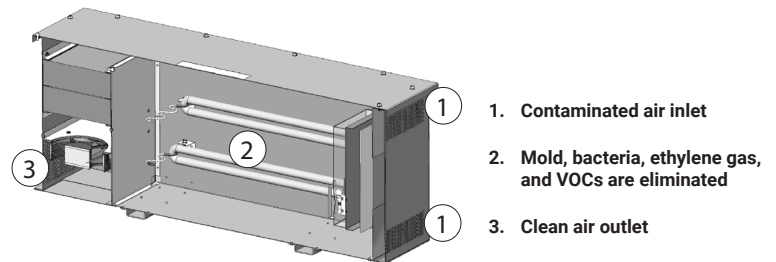
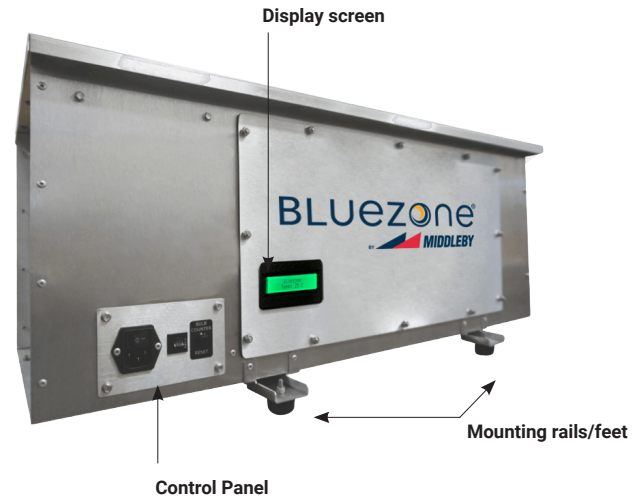


# 2400

## Food Preservation for Walk-in Coolers

### Features and Benefits

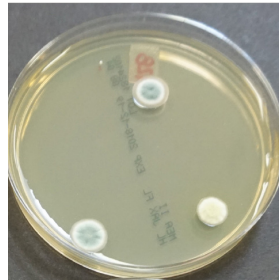
- Utilizes UV enhanced oxidation to clean the air
- Used for fresh preservation of fruits and vegetables by the U.S. Military and U.S. Navy
- Safe for personnel and produce
- Eliminates 99.9% of mold and bacteria as well as ethylene gas in walk-in refrigerators to extend shelf life and reduce waste
- Eliminates Volatile Organic Compounds (VOCs) that are absorbed by nearby products, causing unpleasant transfers of flavor and odors
- Controls monitor temperature and adjust to optimize performance and save bulb life
- Treats up to 15,000 cubic feet of air per unit
- Easy to clean – no contaminated filters to replace
- Display screen indicates status, including bulb operation and bulb life counter
- Easy to install – mounts to ceiling or wall or place on shelf
- Bulb life up to 8,800 hours or one year of continuous operation
- IoT compatible with OpenKitchen (ConnectWare required)
- One-year limited warranty



Microbial Sampling with and without Bluezone by Middleby

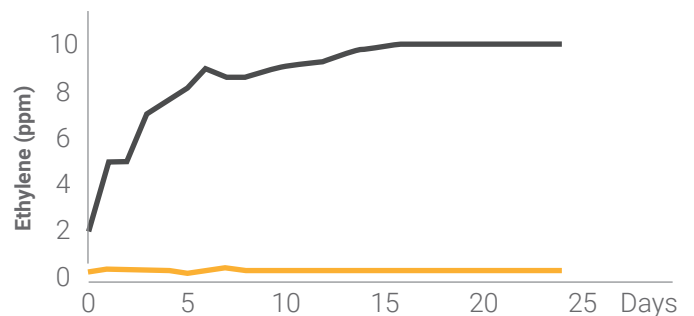


Without Bluezone by Middleby  
Very high microbial load



With Bluezone by Middleby  
Low microbial load

Eliminates Ethylene and Odors

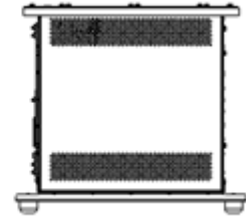
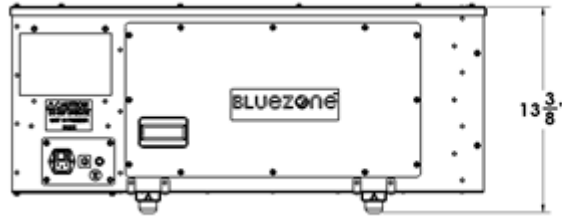


— Without Bluezone — With Bluezone

Ethylene Measurements with and without Bluezone by Middleby

# 2400

## Food Preservation for Walk-in Coolers



SPECIFICATION CATEGORY MODEL 2400 FOOD PRESERVATION	
Size	31" X 14" X 13.375" (79 cm X 36 cm x 34 cm)
Weight	25 lb. (11 kg.)
Input Voltage and Current	120 VAC, 1-phase, 3 amps 240 VAC, 1-phase, 1.5 amps
Electrical Connection	IEC 320-C13, 120 VAC power cord
Operating Environment	34°F-104°F (1°C- 40°C) Up to 85% Relative Humidity (RH)
Storage Environment	-40°F-150°F (-20°C- 65°C) Up to 85% Relative Humidity (RH)
Treatment Volume	15,000 cubic feet 425 m <sup>3</sup> per unit
Flow Rate	30 CFM
Power	Max 250 watts
Certifications	cETLus Listed, NSF/ANSI 2 Sanitation ARB certified (ozone emissions)
Mounting Options:	Hung from ceiling, placed on shelf/rack/cart, or mounted to wall
Shipping	Carton Measurements: 36" X 20" X 20" (91cm X 51cm X 51cm) Total Shipping Weight: 28 lb. / 13 kg.