

Aurora Mega Refrigerated Sandwich/ Salad Prep Table

59049 PT-CN-0711E-HC	59129 PT-CN-0920E-M-HC	59050 PT-CN-1537E-HC	59051 PT-CN-1537E-HC	59130 PT-CN-1787E-M-HC
-------------------------	---------------------------	-------------------------	-------------------------	---------------------------



Enhance your food business setup with ultimate Refrigerated Mega Prep Tables.

These tables designed to efficiently organize and cool ingredients for a variety of culinary needs, from sandwiches to salads and beyond.



KEY FEATURES

Ample Space

This refrigerated prep table boasts a spacious working area, allowing for extra ingredient storage.

Energy efficiency

The isolation system is built using Cyclopentane, which helps to maintain the temperature within the food storage while reducing energy consumption.

Durability

High-quality stainless steel construction provides durability and longevity, and guarantees maximum hygiene and food-grade standards.

Convenience

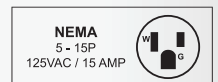
Thick commercial-grade cut board mounted to the table is convenient for cutting and dicing the food during preparation, protecting your table from scratches and knife marks.

Mobility

The table is equipped with heavy-duty casters for effortless movement and setup, while ensuring that your surface remains unscathed.

Eco-Friendly




The equipment uses Hydro-Carbon R290 refrigerant, which is both environmentally friendly and energy efficient. This results in an overall reduction of energy costs of up to 28%.



Aurora Mega Refrigerated Sandwich/ Salad Prep Table



SPECIFICATION

					
Item	59049	59129	59050	59051	59130
Model	PT-CN-0711E-HC	PT-CN-0920E-M-HC	PT-CN-1537E-HC	PT-CN-1537E-HC	PT-CN-1787E-M-HC
Width	Aurora 28" MEGA	Aurora 36" MEGA	Aurora 47" MEGA	Aurora 60" MEGA	Aurora 71" MEGA
Net Volume	201 L / 7.1 cu.ft	258 L / 9.1 cu.ft	357 L / 12.6 cu.ft	469 L / 16.6 cu.ft	553 L / 19.5 cu.ft
Temperature Range	0.5 - 4.4°C / 33 - 40°F				
Max Ambient Temp Rating	24°C / 75°F				
Power	372 W	420 W	444 W	504 W	648 W
Amps	3.6 A	4.2 A	4.56 A	5.04 A	6.48 A
Electrical	115V / 60Hz / 1Ph				
Refrigerant	R290				
Isolation Material	cyclopentane				
Cooling System	ventilated				
Defrosting	Automatic				
Type of Controller	Digital				
Self-Closing Door	YES				
Number of Doors	1	2	2	2	3
Number of Shelves	1	2	2	2	3
Number of Casters	4	4	4	4	5
Shelf Loading Capacity	88 lbs / 40 kgs				
Shelf Material	Plastic Coated				
Number of Insert Pans	3 x 1/9 GN 9 x 1/6 GN	15 x 1/6 GN	18 x 1/6 GN	24 x 1/6 GN	30 x 1/6 GN
Interior Dimensions (WDH)	24.2" x 19.8" x 23.5" 615 x 504 x 597 mm	33" x 19.8" x 23.5" 837 x 504 x 597 mm	43" x 19.8" x 23.5" 1091 x 504 x 597 mm	56.5" x 19.8" x 23.5" 1434 x 504 x 597 mm	66.6" x 19.8" x 23.5" 1691 x 504 x 597 mm
Overall Dimensions (WDH)	27.5" x 34" x 45.9" 698 x 864 x 1166 mm	36.2" x 34" x 45.9" 920 x 864 x 1166 mm	46.8" x 34" x 45.9" 1188 x 864 x 1166 mm	60.2" x 34" x 45.9" 1529 x 864 x 1166 mm	70.4" x 34" x 45.9" 1787 x 864 x 1166 mm
Gross Dimensions (WDH)	32.7" x 39.2" x 49" 830 x 995 x 1245 mm	41.4" x 39.2" x 49" 1052 x 995 x 1245 mm	52" x 39.2" x 49" 1320 x 995 x 1245 mm	65.4" x 39.2" x 49" 1660 x 995 x 1245 mm	75.6" x 39.2" x 49" 1920 x 995 x 1245 mm
Net Weight	198.4 lbs / 90 kg	242.5 lbs / 110 kg	275.6 lbs / 125 kg	341.7 lbs / 155 kg	374.8 lbs / 170 kg
Gross Weight	251.3 lbs / 114 kg	308.6 lbs / 140 kg	370.4 lbs / 168 kg	427.7 lbs / 194 kg	577.6 lbs / 262 kg

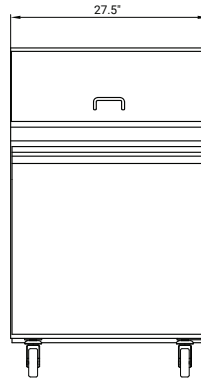
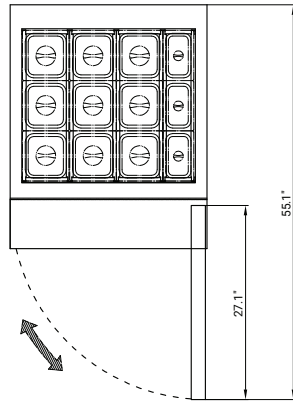
Aurora Mega Refrigerated Sandwich/ Salad Prep Table



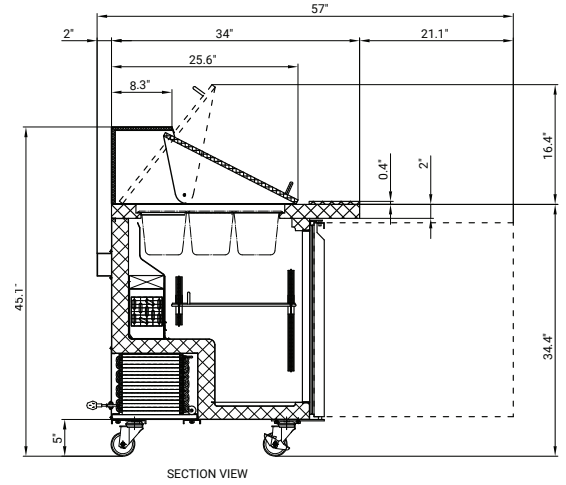
DIMENSIONS

(Measurements in diagrams are in inches)

#59049
28-inch Mega

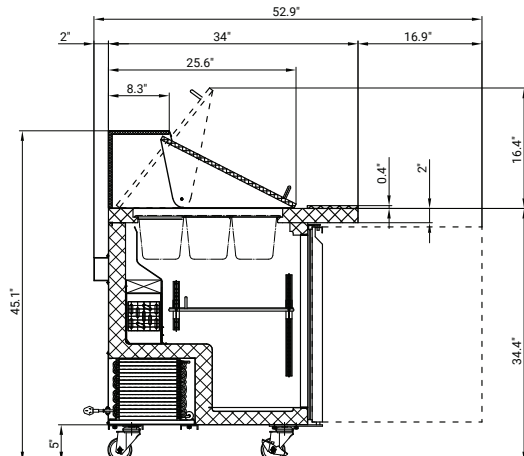
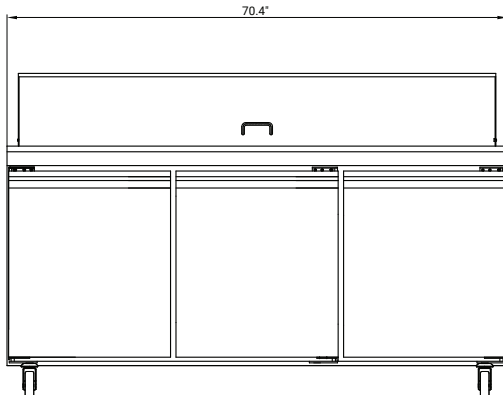
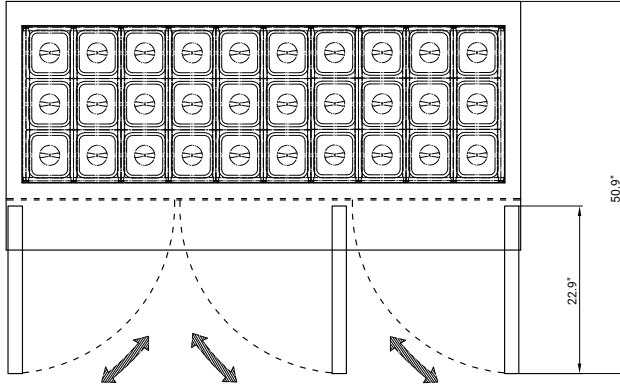


FRONT VIEW



SECTION VIEW

#59130
71-inch Mega

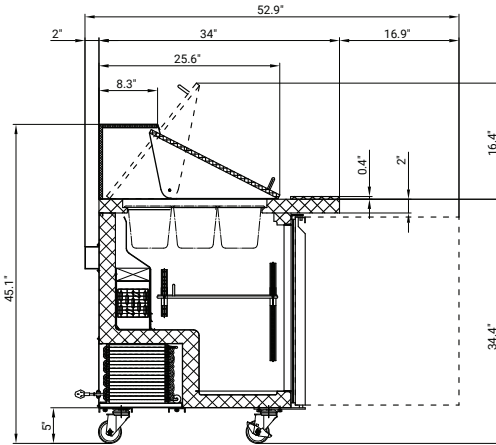


Aurora Mega Refrigerated Sandwich/ Salad Prep Table

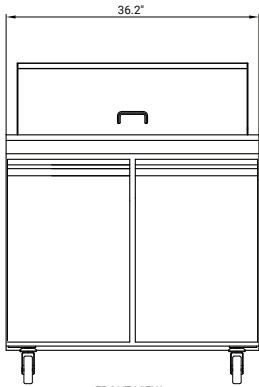


DIMENSIONS

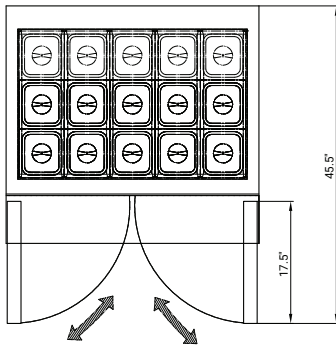
(Measurements in diagrams are in inches)



#59129
36-inch Mega

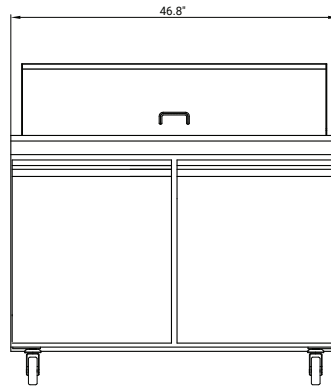


FRONT VIEW

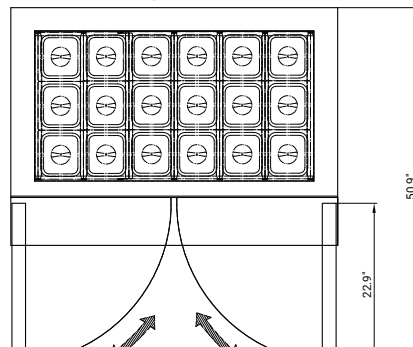


TOP VIEW

#59050
47-inch Mega



FRONT VIEW



TOP VIEW

#59051
60-inch Mega

