

## Artisan Stone Deck Oven

### MODEL: 2T Series



### CAPACITY (Per Deck)

- 4 Half Size Sheet Pans (13" x 18" - 30mm x 457mm)
- 2 Full Size Sheet Pans (18" x 26" - 457 mm x 660 mm)

### ELECTRICAL SYSTEM

#### 1 Phase 50/60 HZ, 2 wires ( ground wire not included)

2T1	208V	5 Kw	32 A
	240V	5 Kw	28 A
2T2	208V	10 Kw	64 A
	240V	10 Kw	56 A
2T3	208V	15 Kw	96 A
	240V	15 Kw	84 A
2T4	208V	20 Kw	128 A
	240V	20 Kw	112 A

#### 3 Phases 50/60 HZ, 3 wires ( ground wire not included)

2T1	208V	5 Kw	18 A
	240V	5 Kw	16 A
	480V	5 Kw	8 A
2T2	208V	10 Kw	36 A
	240V	10 Kw	32 A
	480V	10 Kw	16 A
2T3	208V	15 Kw	54 A
	240V	15 Kw	48 A
	480V	15 Kw	24 A
2T4	208V	20 Kw	72 A
	240V	20 Kw	64 A
	480V	20 Kw	32 A

#### Optional Proofer (Ground Wire not Included):

- 208V - 7.8A - 1.6 kW - 50/60 Hz - 2 wires
- 240V - 9A - 2.2 kW - 50/60 Hz - 2 wires
- 480V - 4.1A - 2.2 kW - 50/60 Hz - 2 wires

### STANDARD PRODUCT WARRANTY

One Year Labor & Two Year Parts

### FEATURES & BENEFITS

- Intuitive Programmable Control per Chamber
- 600°F Max Bake Temperature
- 1" (25 mm) Refractory Stone Deck
- Stainless steel construction
- Independent Shot Steam Per Deck
- Single Electrical, Drain, & Water Connections
- Fully Insulated & Illuminated
- Retracting Doors (Saving Space When Loading & Unloading)
- Independent Temperature Control for Upper & Lower Deck Elements
- Two Year Parts and One Year Labor Warranty

### OPTIONS & ACCESSORIES

- Water Filter (50-1530)
- Standard Proofer for 1 - 2 Decks (ES2T)
- Low Profile Proofer for 3 Decks (ES2TP)
- Stainless Steel Deck
- Non-Functional Eyebrow Canopy (EH2T)
- Modular Shipping
- Loaf Loader (LL)
- Single Phase Electrical
- 380-415V electrical configuration

### FINISH

Stainless Steel

### WATER & DRAIN CONNECTION

Water: 1/4"

Drain: 1/2"

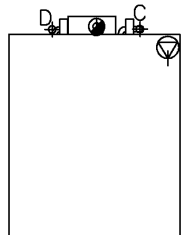
### MINIMUM CLEARANCES

1" (25 mm) Side & Back

6" (153 mm) Top

#### PLEASE NOTE:

- One single electrical, drain, water connection. Multiple decks are inter connected
- Electrical inlet located at the back on top right hand corner
- For Steam Efficiency minimum water inlet pressure 50 PSI
- To prevent steam system scale issue install water softener rated for a minimum of 3 GPM



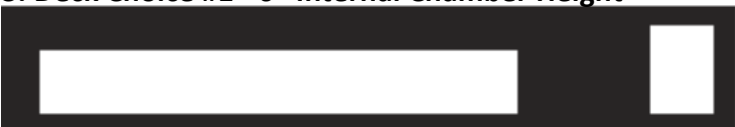
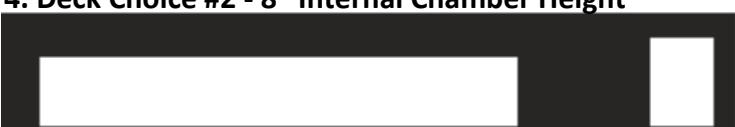
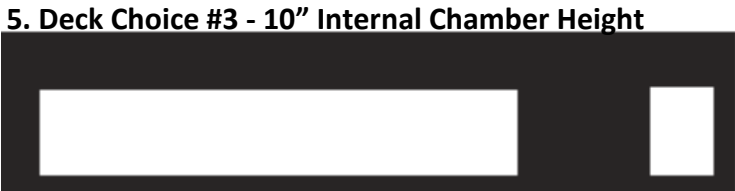
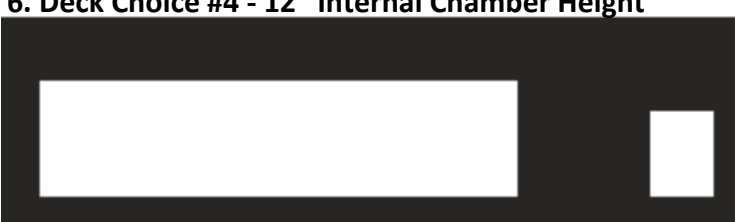


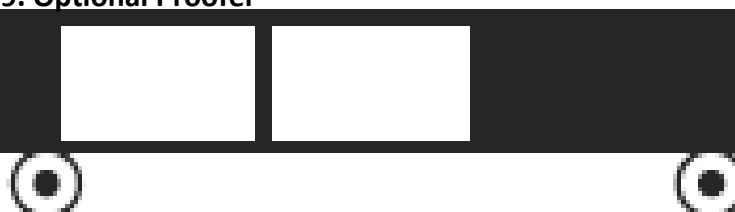


### SHORT SPECIFICATION

Artisanal Stone Deck Oven, Electric, 1 Chamber, Programmable Control per Chamber, Individual Shot Steam per Chamber, One Piece Shipment Standard, Single Electrical Connection, Single Water & Drain Connection, Stainless Steel Construction, 1" Thick Refractory Stone, Standard with Heavy Duty Legs with Casters,

# DIMENSIONS & SHIPPING WEIGHT

To calculate the total height of your artisan deck oven please follow each of the below worksheet. Please note that the artisan deck oven can not exceed the total height of 78" to fit under any required standard hood system:

- 1. Optional Eyebrow Canopy**  
  
**Dimensions:** 5" H (128mm) x 54 1/2"W (1384mm) x 46 1/2" D (1181mm)
- 2. Top Cover Plate**  
  
**Dimensions:** 2 1/2" H (64mm) x 54 1/2"W (1384mm) x 46 1/2" D (1181mm)
- 3. Deck Choice #1 - 6" Internal Chamber Height**  
  
**Exterior Dimensions:** 13 5/8" H (347mm) x 54 1/2"W (1384mm) x 46 1/2" D (1181mm)  
**Interior Dimensions:** 6" H (153mm) x 37 1/2"W (953mm) x 30" D (762mm)
- 4. Deck Choice #2 - 8" Internal Chamber Height**  
  
**Exterior Dimensions:** 15 5/8" H (397mm) x 54 1/2"W (1384mm) x 46 1/2" D (1181mm)  
**Interior Dimensions:** 8" H (203mm) x 37 1/2"W (953mm) x 30" D (762mm)
- 5. Deck Choice #3 - 10" Internal Chamber Height**  
  
**Exterior Dimensions:** 17 5/8" H (447mm) x 54 1/2"W (1384mm) x 46 1/2" D (1181mm)  
**Interior Dimensions:** 10" H (253mm) x 37 1/2"W (953mm) x 30" D (762mm)
- 6. Deck Choice #4 - 12" Internal Chamber Height**  
  
**Exterior Dimensions:** 19 5/8" H (497mm) x 35 3/4"W (908mm) x 46 1/2" D (1181mm)  
**Interior Dimensions:** 12" H (303mm) x 37 1/2"W (953mm) x 30" D (762mm)
- 7. Base Plate**  
  
**Dimensions:** 2 1/2" H (64mm) x 54 1/2"W (1384mm) x 46 1/2" D (1181mm)
- 8. Standard Legs with Casters**  
  
**Dimensions:**  
**One Deck:** 33" H (838mm) x 54 1/2"W (1384mm) x 37 1/2" D (952mm)  
**Two Deck:** 24" H (610mm) x 54 1/2"W (1384mm) x 37 1/2" D (952mm)  
**Three Deck:** 21" H (533mm) x 54 1/2"W (1384mm) x 37 1/2" D (952mm)  
**Four Deck:** 9" H (227mm) x 54 1/2"W (1384mm) x 37 1/2" D (952mm)
- 9. Optional Proofer**  
  
**Standard Proofer Dimensions (For 1 - 2 Chambers):**  
32 1/8" H (817mm) x 54 1/2"W (1384mm) x 37 1/2" D (953mm)  
**Shipping Weight:** 590 lbs (268 kg)  
**Low Profile Proofer Dimensions (For 3 Chambers):**  
24 5/8" H (651mm) x 54 1/2"W (1384mm) x 37 1/2" D (953mm)  
**Shipping Weight:** 590 lbs (268 kg)

**TOTAL ARTISAN DIMENSIONS:** (Height) \_\_\_\_\_ x (Width) \_\_\_\_\_ x (Depth) \_\_\_\_\_