

## Artisan Stone Deck Oven MODEL: 1T Series



### FEATURES & BENEFITS

- Digital Control per Chamber
- 600°F Max Bake Temperature
- 1" (25 mm) Refractory Stone Deck
- Stainless steel construction
- Independent Shot Steam Per Deck
- Single point connection for Electrical, Drain, & Water Connections
- Fully Insulated & Illuminated
- Retracting Doors (Saving Space When Loading & Unloading)
- Independent Temperature Control for Upper & Lower Deck Elements
- Two Year Parts and One Year Labor Warranty

### ELECTRICAL SYSTEM

1 Phase 50/60 HZ, 2 wires ( ground wire not included)

1T1	208V	5 Kw	24 A
	240V	5 Kw	21 A
1T2	208V	10 Kw	48 A
	240V	10 Kw	52 A
1T3	208V	15 Kw	72 A
	240V	15 Kw	63 A
1T4	208V	20 Kw	96 A
	240V	20 Kw	84 A

3 Phases 50/60 HZ, 3 wires ( ground wire not included)

1T1	208V	5 Kw	14 A
	240V	5 Kw	12A
	480V	5 Kw	6A
1T2	208V	10 Kw	28 A
	240V	10 Kw	24 A
	480V	10 Kw	12A
1T3	208V	15 Kw	42 A
	240V	15 Kw	36 A
	480V	15 Kw	18 A
1T4	208V	20 Kw	56 A
	240V	20 Kw	48 A
	480V	20 Kw	24 A

Optional Proofer (Ground Wire not Included):

- 208V - 7.8A - 1.6 kW - 50/60 Hz - 2 wires
- 240V - 9A - 2.2 kW - 50/60 Hz - 2 wires

### STANDARD PRODUCT WARRANTY

One Year Labor & Two Year Parts

### OPTIONS & ACCESSORIES

- Water Filter (50-1530)
- Standard Proofer for 1 - 2 Decks (ES1T)
- Low Profile Proofer for 3 Decks (ES1TP)
- Stainless Steel Deck
- Non-Functional Eyebrow Canopy (EH1T)
- Modular Shipping
- Loaf Loader (LL)
- Single Phase Electrical
- 380-415V electrical configuration

### MINIMUM CLEARANCES

1" (25 mm) Side & Back  
6" (153 mm) Top

### CAPACITY (Per Deck)

2 Half Size Sheet Pans (13" x 18" - 30mm x 457mm)  
1 Full Size Sheet Pans (18" x 26" - 457 mm x 660 mm)

### FINISH

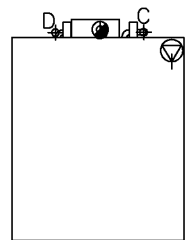
Stainless Steel

### WATER & DRAIN CONNECTION

Water: 1/2"  
Drain: 1/2"

#### PLEASE NOTE:

- One single electrical, drain, water connection. Multiple decks are inter connected
- Electrical inlet located at the back on top right hand corner
- For Steam Efficiency minimum water inlet pressure 50 PSI
- To prevent steam system scale issue install water softener rated for a minimum of 3 GPM



### SHORT SPECIFICATION

Artisanal Stone Deck Oven, Electric, Independent Digital Control per Chamber, Individual Shot Steam per Chamber, One Piece Shipment Standard, Single Electrical Connection, Single Water & Drain Connection, Stainless Steel Construction, 1" Thick Refractory Stone, Standard with Heavy Duty Legs with Casters, Eco-mode Programming—Helps Saving Energy, 5 kW (Total)

# DIMENSIONS & SHIPPING WEIGHT

To calculate the total height of your artisan deck oven please follow each of the below worksheet. Please note that the artisan deck oven can not exceed the total height of 78" to fit under any required standard hood system. Please note items marked optional, only add dimensions if adding.

## 1. Optional Eyebrow Canopy



**Dimensions:** 5" H (128mm) x 35 3/4" W (908mm) x 46 1/2" D (1181mm)

## 2. Top Cover Plate



**Dimensions:** 2 1/2" H (64mm) x 35 3/4" W (908mm) x 46 1/2" D (1181mm)

## 3. Deck Choice #1 - 6" Internal Chamber Height



**Exterior Dimensions:** 13 5/8" H (347mm) x 35 3/4" W (908mm) x 46 1/2" D (1181mm)

**Interior Dimensions:** 6" H (153mm) x 18 1/2" W (908mm) x 30" D (762mm)

**Crated Weight:** 580 lbs (263 kg)

## 4. Deck Choice #2 - 8" Internal Chamber Height



**Exterior Dimensions:** 15 5/8" H (397mm) x 35 3/4" W (908mm) x 46 1/2" D (1181mm)

**Interior Dimensions:** 8" H (203mm) x 18 1/2" W (908mm) x 30" D (762mm)

**Crated Weight:** 580 lbs (263 kg)

## 5. Deck Choice #3 - 10" Internal Chamber Height



**Exterior Dimensions:** 17 5/8" H (447mm) x 35 3/4" W (908mm) x 46 1/2" D (1181mm)

**Interior Dimensions:** 10" H (253mm) x 18 1/2" W (908mm) x 30" D (762mm)

**Crated Weight:** 580 lbs (263 kg)

## 6. Deck Choice #4 - 12" Internal Chamber Height



**Exterior Dimensions:** 19 5/8" H (497mm) x 35 3/4" W (908mm) x 46 1/2" D (1181mm)

**Interior Dimensions:** 12" H (303mm) x 18 1/2" W (908mm) x 30" D (762mm)

**Crated Weight:** 580 lbs (263 kg)

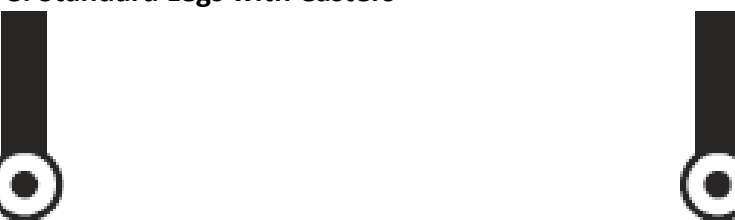
## 7. Base Plate



**Dimensions:**

2 1/2" H (64mm) x 35 3/4" W (908mm) x 46 1/2" D (1181mm)

## 8. Standard Legs with Casters



**Dimensions:**

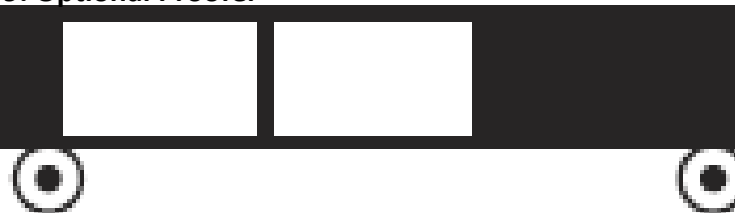
**One Deck:** 33" H (838mm) x 35 3/4" W (908mm) x 37 1/2" D (952mm)

**Two Deck:** 24" H (610mm) x 35 3/4" W (908mm) x 37 1/2" D (952mm)

**Three Deck:** 21" H (533mm) x 35 3/4" W (908mm) x 37 1/2" D (952mm)

**Four Deck:** 9" H (227mm) x 35 3/4" W (908mm) x 37 1/2" D (952mm)

## 9. Optional Proofer



**Standard Proofer Dimensions (For 1 - 2 Chambers):**

32 1/8" H (817mm) x 35 3/4" W (908mm) x 37 1/2" D (953mm)

**Shipping Weight:** 300 lbs (137 kg)

**Low Profile Proofer Dimensions (For 3 Chambers):**

32 1/8" H (817mm) x 35 3/4" W (908mm) x 37 1/2" D (953mm)

**Shipping Weight:** 300 lbs (137 kg)

**TOTAL ARTISAN DIMENSIONS:** (Height) \_\_\_\_\_ x (Width) \_\_\_\_\_ x (Depth) \_\_\_\_\_



5600 13th Street  
Menominee, MI 49858  
sales@nu-vu.com  
(800) 338-9886 Toll Free  
(906) 843-4401 Phone  
(906) 863-5889 Fax  
www.doyon.qc.ca

**SPECIFICATIONS SUBJECT TO CHANGE WITHOUT NOTICE**

**KCL & REVIT DRAWINGS UPON REQUEST** Rev 2—3/6/2017