



HANDLING AND STORAGE

SERVING THE FOOD INDUSTRY SINCE 1951

## FULL-SIZE INSULATED FOOD PAN CARRIER - 21.5 L CAPACITY

Item: 44548

*The Omcan insulated pan carrier is light and durable, capable of transporting significant loads while maintaining your food's serving temperature. Bring this 100% recyclable product to your next hospitality event and serve your products with ease.*



Authorized Dealer

# HANDLING AND STORAGE

## INSULATED FOOD PAN CARRIER - 21.5 L CAPACITY



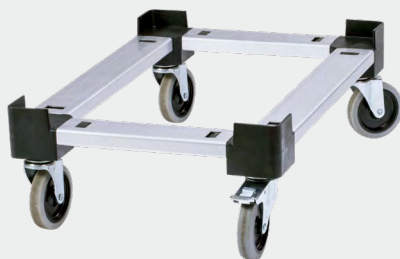
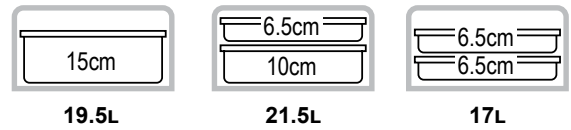
### Features:

- Made of 100% recyclable Expanded Polypropylene
- Ideal to store hot and cold food safely for hours
- With good insulation and heat resistance, it can withstand temperature from -40°C / -40°F to 120°C / 248°F



Item 44548 Food Pan Carrier  
with item 44554 Cart

### CAPACITY GUIDE



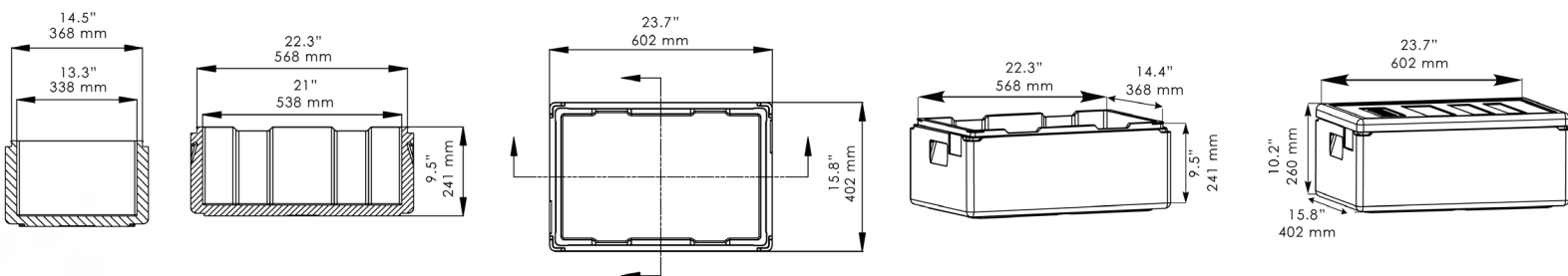
### OPTIONAL ACCESSORY

ITEM	44554
DESCRIPTION	Cart for Full-size Food Pan Carrier

### TECHNICAL SPECIFICATIONS

ITEM NUMBER	44548	INTERIOR DIMENSIONS (WDH)	21" x 13.3" x 9.5" 533.4 x 337.82 x 241.3 mm
DESCRIPTION	Full Size Food Pan Carrier	PACKAGING DIMENSIONS	24.2" x 16.3" x 10.8" 614.68 x 414.02 x 274.32 mm
COLOR	Black	NET WEIGHT	2.64 lbs. / 1.2 kg.
LOAD CAPACITY	21.5 L	GROSS WEIGHT	4.4 lbs. / 2 kg.
DIMENSIONS (WDH)	23.7" x 15.8" x 10.2" 601.98 x 401.32 x 259.08 mm		

### TECHNICAL DRAWINGS WITH DETAILED DIMENSIONS



## OMCAN INC.

Telephone: 1-800-465-0234  
 Fax: (905) 607-0234  
 Email: sales@omcan.com  
 Website: www.omcan.com



Follow us to keep up to date with the latest news and offers





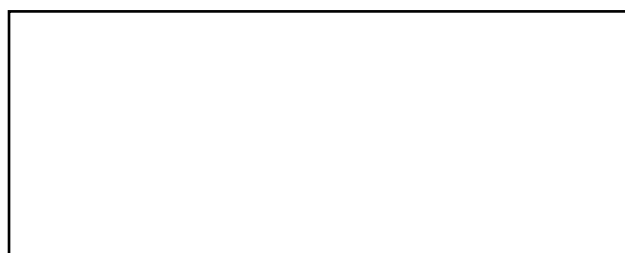
**HANDLING AND STORAGE**

**SERVING THE FOOD INDUSTRY SINCE 1951**

## **FULL-SIZE INSULATED FOOD PAN CARRIER - 28 L CAPACITY**

**Item: 44549**

*The Omcan insulated pan carrier is light and durable, capable of transporting significant loads while maintaining your food's serving temperature. Bring this 100% recyclable product to your next hospitality event and serve your products with ease.*



Authorized Dealer

# HANDLING AND STORAGE

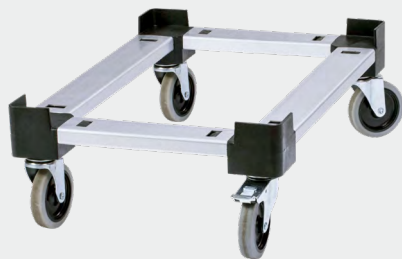
## INSULATED FOOD PAN CARRIER - 28 L CAPACITY



Cart sold separately.

### Features:

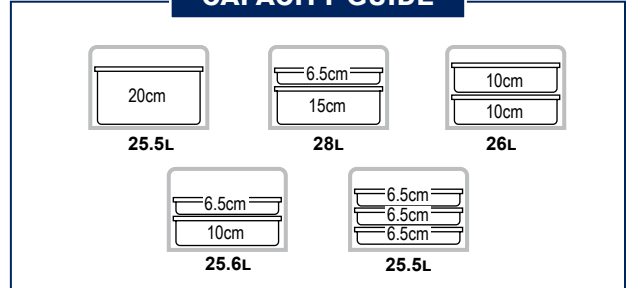
- Made of 100% recyclable Expanded Polypropylene
- Ideal to store hot and cold food safely for hours
- With good insulation and heat resistance, it can withstand temperature from -40°C / -40°F to 120°C / 248°F



### OPTIONAL ACCESSORY

ITEM	44554
DESCRIPTION	Cart for Full-size Food Pan Carrier

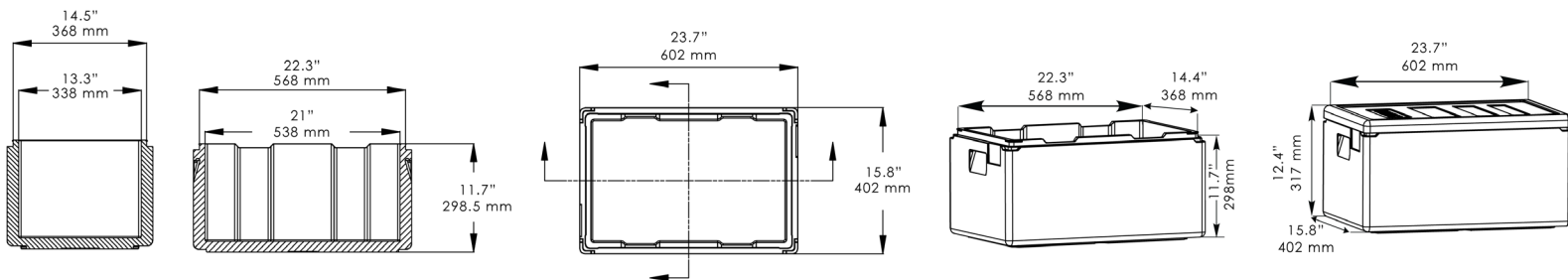
### CAPACITY GUIDE



### TECHNICAL SPECIFICATIONS

ITEM NUMBER	44549	INTERIOR DIMENSIONS (WDH)	21" x 13.3" x 11.7" 533.4 x 337.82 x 297.18 mm
DESCRIPTION	Full Size Food Pan Carrier	PACKAGING DIMENSIONS	24.2" x 16.3" x 13" 614.68 x 414.02 x 330.2 mm
COLOR	Black	NET WEIGHT	3 lbs. / 1.3 kg.
LOAD CAPACITY	28 L	GROSS WEIGHT	4.85 lbs. / 2.19 kg.
DIMENSIONS (WDH)	23.7" x 15.8" x 12.4" 601.98 x 401.32 x 314.96 mm		

### TECHNICAL DRAWINGS WITH DETAILED DIMENSIONS



## OMCAN INC.

Telephone: 1-800-465-0234  
 Fax: (905) 607-0234  
 Email: sales@omcan.com  
 Website: www.omcan.com



Follow us to keep up to date with the latest news and offers





**HANDLING AND STORAGE**

**SERVING THE FOOD INDUSTRY SINCE 1951**

## Insulated Food Pan Carrier

Item: 80634

Keep your products fresh and ready to serve!

The Omcan insulated pan carrier is light and durable, capable of transporting significant loads while maintaining your food's serving temperature. Bring this 100% recyclable product to your next hospitality event and serve your products with ease.



*Products may not be exactly as shown. Containers not included.*



Authorized Dealer

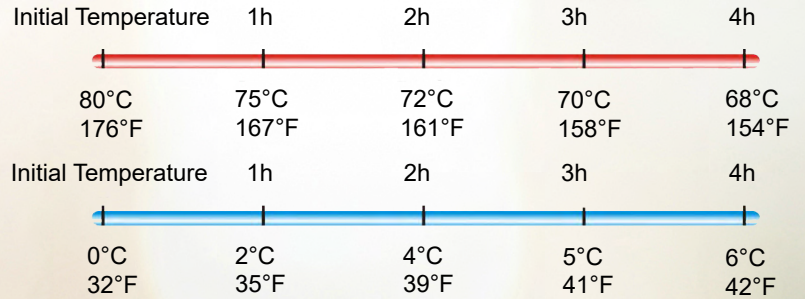
# HANDLING AND STORAGE

## INSULATED FOOD PAN CARRIER



-40°C to 120°C

### Insulation Effect

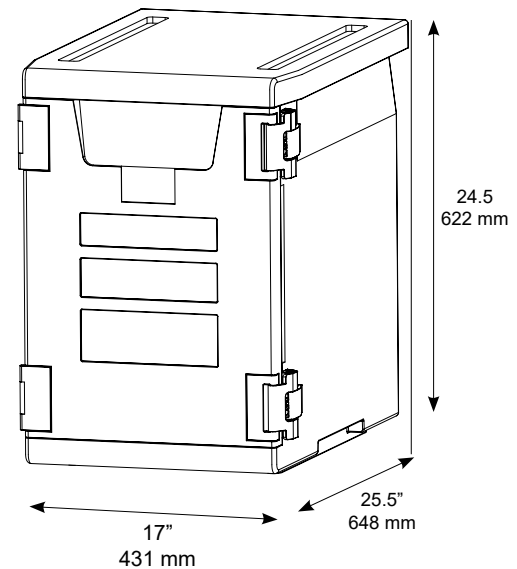


### Features:

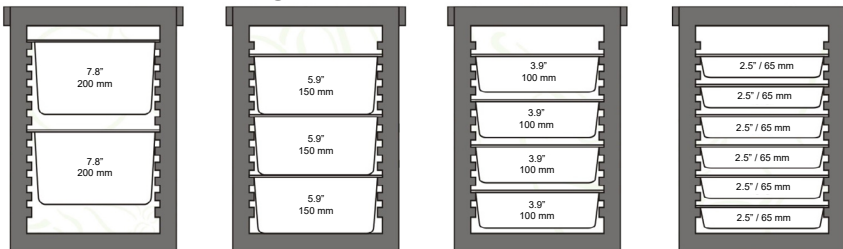
- Made of 100% recyclable Expanded Polypropylene
- Capable of holding significant loads for up to four hours
- Hinged door that can be rotated at 270°
- Stackable and easy to transport
- Sturdy, light and durable for everyday use
- Insulator can withstand temperatures from -40°C / -40°F and +120°C / 248°F

### TECHNICAL SPECIFICATION

ITEM NUMBER	80634
DESCRIPTION	Full Size Food Pan Carrier
COLOR	Black
LOAD CAPACITY	7.8" - 2.5" / 65 mm - 200 mm (pan / container height)
DIMENSIONS (WDH)	25.5" x 17" x 24.5" / 648 mm x 431 mm x 622 mm
INTERIOR DIMENSIONS (WDH)	13.25" x 21.75" 20.6" / 336 mm x 552 mm x 523 mm
PACKAGING DIMENSIONS	18" x 25" x 25" / 475 mm x 635 mm x 635 mm
NET WEIGHT	4.5 kg / 10 lbs
GROSS WEIGHT	4.9 kg / 11 lbs



### Pan / Container Height



## OMCAN INC.

Telephone: 1-800-465-0234  
 Fax: (905) 607-0234  
 Email: sales@omcan.com  
 Website: www.omcan.com



Follow us to keep up to date with the latest news and offers

