



ResMed Air Solutions

products and accessories guide

Accessories

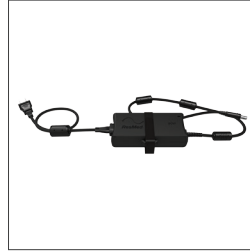


ClimateLineAir heated tube
37296

ClimateLineAir Oxy tube
37357



SlimLine™ tube
36810



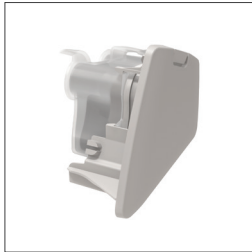
90W power supply unit
37347



Air outlet
37310



HumidAir heated humidifier cleanable tub
37300



Side cover
37335 Grey
37303 Charcoal



Travel bag
37304
Travel bag for Her
37305



SD card with protective folder
37363 (1 pk)
37362 (10 pk)



Oximetry module*
37302
Nonin XPOD oximeter
22374
Reusable soft sensor (medium) – 3 metre cable
70568



Filters – standard
36850 (1 pk) **36851** (2 pk)
36852 (12 pk) **36853** (50 pk)
Filters – hypoallergenic
36855 (1 pk) **36856** (2 pk)
36857 (12 pk) **36858** (50 pk)
Filter cover
19729 (AirSense 10)
19768 (AirSense 10 AutoSet for Her)

Additional accessories

Converter	ResMed Power Station II	USB module	Tubing	ResScan™ software
DC–DC converter 37297	RPS II battery pack 24921 Cable 37343 Adapter 37342	USB module 37301	Standard tubing 21948 SlimLine tubing wrap 36811 Standard tubing wrap 33963 Air 10 tubing elbow 37394	To order ResScan patient management software, contact your ResMed representative.

* Not compatible with the AirSense 10 CPAP therapy device. Images may not be exact representations of the final products.