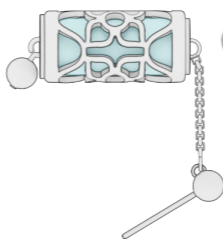
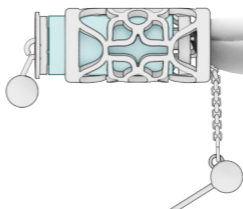


◆ REMOVING THE SILK ◆

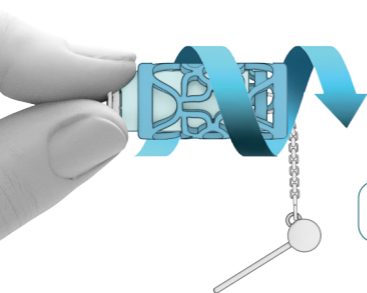
1



2

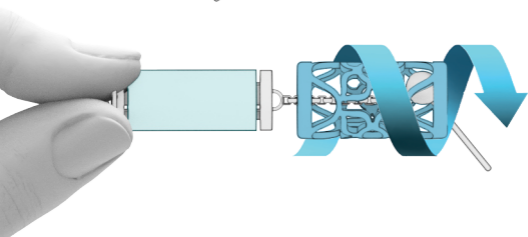


3

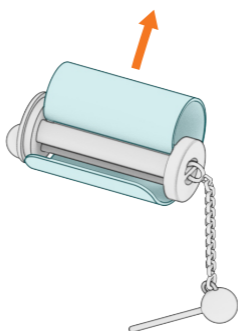


Turn in the direction that has no resistance.

4

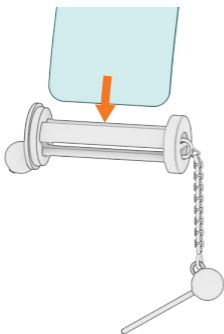


5

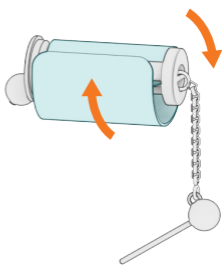


◆ INSERTING THE SILK ◆

1



2

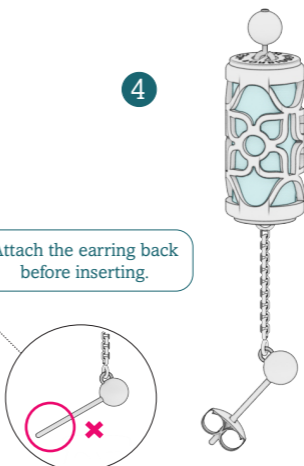


3



Attach the earring back
before inserting.

4



◆ CARING FOR YOUR SILK EARRINGS ◆

Avoid contact with chemicals, sweat and creams.

How to care for the Silk

To clean the Silk Slide, handwash with lukewarm or cold water and gentle detergent. Do not soak. If you wish to flatten the Slide, iron on the silk setting under a protective cloth.

How to care for the Metal

Clean the metal periodically with soft facial tissue and rubbing alcohol to remove oils. The Earrings are made from Sterling Silver and plated with Rhodium for longer lasting shine.

However, should any tarnishing occur, gently polish with a silver jewellery polishing cloth. Do not rub excessively while polishing to avoid removing the plating.

Storing

Keep in a pouch in a cool, dry place. Consider storing with anti-tarnish strips in humid environments.