

CRIMESTOPPER

SECURITY PRODUCTS

BSD-754 Blind Spot Detection System

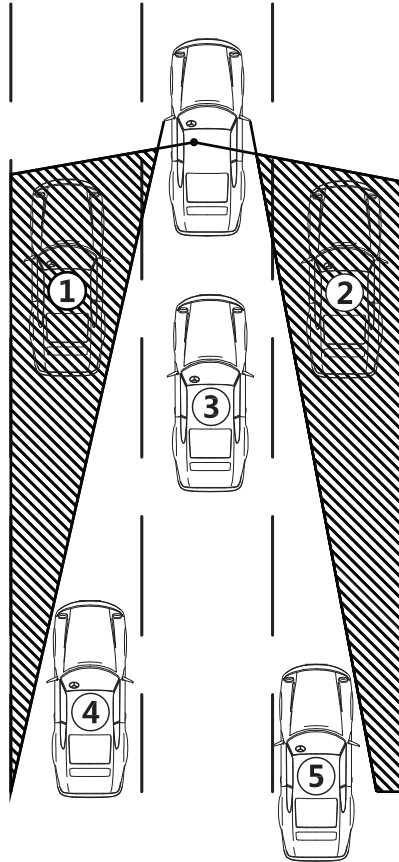


Operation Manual

HOW IT WORKS

1. The Blind Spot area.

This is the area that the driver cannot see from the side mirror, as shown in the diagram as locations 1 and 2.



2. The Blind Spot Detection System.

This system will alert the driver of objects in the vehicles Blind Spot, like vehicles 1 and 2 in the above diagram, by turning ON the LED's mounted in the vehicle. If you are using your turn signal and an object is in your blind spot this will turn ON the LED's and trigger the warning chime. The BSD-754 will cover up to a 10 ft radius on each side of the vehicle indicating an object in in your Blind Spot.

SPECIFICATIONS

Rated Operating Voltage	DC 12V
Operating Voltage Range	9.6V - 16V
Operating Temperature	-30° C - 70° C -22° F - 158° F
Operating Current	≤300mA
Farthest Distance of Detection	3.0m/ 10ft.

- The system may give a false alarm when driving on a large slope, tall grassy areas or rugged roads.

OPERATION

1. Turning the System ON.

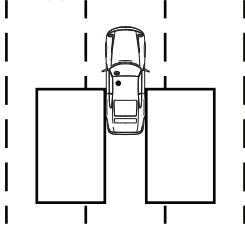
Turn the ignition to the ON position. The system will be active as long as the vehicle is NOT in reverse.



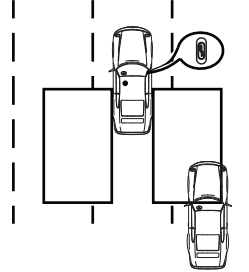
OPERATION

2. Sensor Functions.

If the rear sensors do NOT detect an object, then NO LED or warning chimes will be triggered.

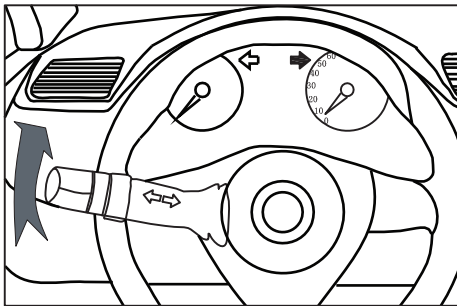


If the rear sensors detect something then they will trigger the LED on that side of the vehicle.

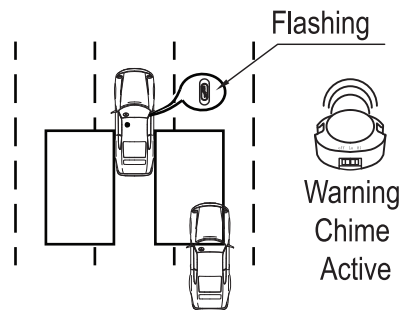


Warning
Chime
In-active

If you have turned on the turn signal and the rear sensors detect an object this will trigger a flashing LED and warning chime.

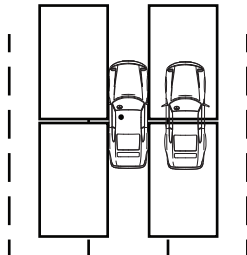


Right Indicator



Warning
Chime
Active

If an object is detected by the rear sensors and the front sensors at the same time, then this will NOT trigger either the LED or the warning chime.

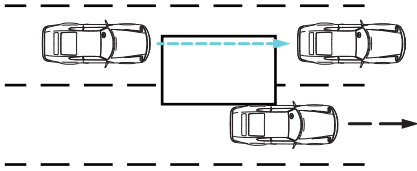


OPERATION

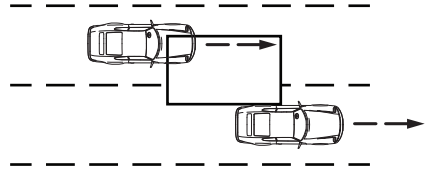
3. System Alerts

The system will trigger alerts on these conditions.

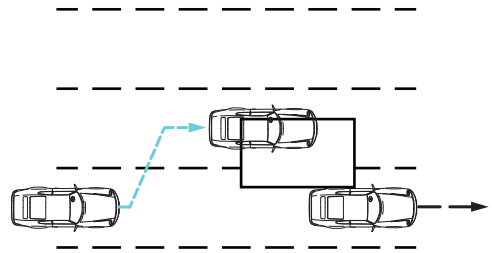
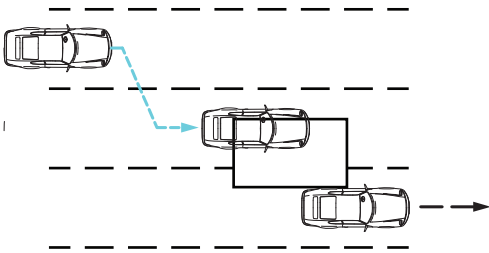
When you pass or when other vehicles pass you.



Anytime an object is in the detection area.



When someone moves into a lane near you or to pass you.



Note: There may be some situations that the system may not detect an object in your blind spot or may show something in the blind spot when nothing is there. Here are some examples.

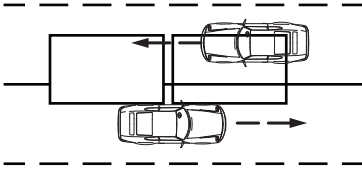
1. Ice or dirt on the sensor.
2. Bad weather conditions.
3. Multiple vehicles passing in a row.
4. Vehicles moving at a very high rate of speed.
5. Traffic intersections.

OPERATION

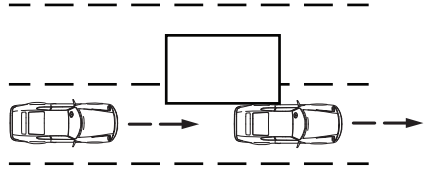
4. No System Triggers

Here are some situations the system may NOT activate.

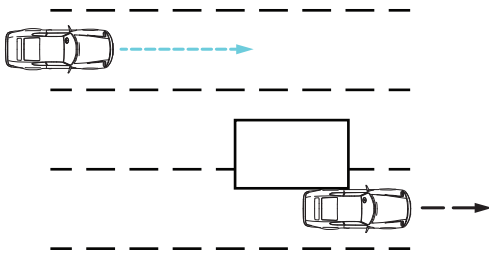
Oncoming traffic.



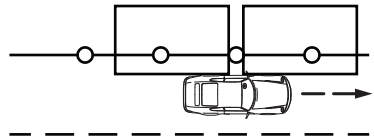
Vehicle following you.



2 or more lanes between you and the other vehicle.



When driving near railings, walls, signs, stopped vehicles or fixed object.

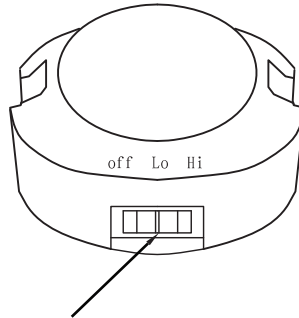


Note: There may be some situations that the system may give a false alert due to the blind spot detection system picking up something in the detection area. Here are some examples.

- 1.The median of the road.
- 2.A wall or barrier.
- 3.A fence line.
- 4.Turning near a building.

WARNING CHIME VOLUME

Warning Chime Speaker
Volume Control



Volume Control (OFF, LOW, HI)
The factory default is LOW.

The warning chime speaker has an adjustable volume control switch so it can be adjusted to suit your vehicle and needs. The default setting is LOW but can be adjusted to HI or OFF if needed.

Warning Chime Volume Adjustment

Using the above diagram for switch orientation when making adjustments, the default setting is set to the middle or the LOW volume setting. Sliding the switch to the right will set it to the HI volume. Sliding the switch to the left will turn the warning chime OFF.

Note: The installed warning chime's mounting orientation may differ from the diagram.

CRIMESTOPPER

SECURITY PRODUCTS

LIMITED WARRANTY

Rockford Corporation offers a limited warranty on all Crimestopper products as detailed below and on the following terms:

ALL SAFETY PRODUCTS

- **Length Of Warranty**
1 Year

SECURITY and REMOTE START PRODUCTS

- **Length Of Warranty**

Limited Lifetime, Crimestopper will repair or replace defective modules with a comparable new or refurbished module during reasonable usage and the lifetime of the vehicle in which it is originally installed provided that the module is returned to Rockford, shipping pre-paid and accompanied by a legible copy of the original sales receipt from the authorized dealer containing; the consumer's name, authorized dealer's name, date of purchase, item or sku number, product description, and the year make and model of the vehicle in which it is installed. The additional componentry of the system, including but not limited to remotes, antennas and harnesses, are covered by a one year warranty from the date of original purchase. Products received for repair or replacement without proof of purchase from an authorized dealer will be denied

- **What Is Covered**

This warranty applies only to Crimestopper products sold to consumers by authorized Crimestopper dealers in the United States of America. Products purchased by consumers from an Authorized Crimestopper Dealer in any other country are covered only by that country's Distributor and not by Rockford Corporation.

- **Who Is Covered**

This warranty covers only the original purchaser of Crimestopper product purchased from an authorized Crimestopper dealer. In order to receive service, the purchaser must provide Rockford Corporation with a copy of the original sales receipt stating the customer name, dealer name, product purchased and date of purchase. Products found to be defective during the warranty period will be repaired or replaced with a product deemed to be equivalent at Rockford's sole discretion.

- **What Is NOT Covered**

- Damage caused by accident, abuse, improper installation, operations, water, and theft
- Any cost or expense related to the removal or reinstallation of product
- Any product which has had the serial number defaced, altered, or removed
- Subsequent damage to other components
- Any product not purchased from an authorized Crimestopper dealer

- **Limit On Implied Warranties**

Any implied warranties including warranties of fitness for use and merchantability are limited in duration to the period of the express warranty set forth above. Some states do not allow limitations on the length of an implied warranty, so this limitation may not apply. No person is authorized to assume for Rockford Corporation any other liability in connection with the sale of the product.

- **How To Obtain Service**

Please call 1-800-998-6880 for Rockford Customer Service. You must obtain an RA# (Return Authorization number) to return any product to Rockford Corporation. You are responsible for shipment of product to Rockford. cs.support@rockfordcorp.com

www.CrimeStopper.com

Phone: (800) 998-6880

Fax: (800) 366-6724

Email: cs.techsupport@rockfordcorp.com

©2015 Rockford Corporation. All Rights Reserved. CrimeStopper and associated logos, where applicable, are registered trademarks of Rockford Corporation in the United States and/or other countries. Specifications subject to change without notice.