

GLUCOMEDI  
**SMART SENSOR**



Manual

# SENSOR FOR MEDICATION

The GlucoMedi Smart Temperature Sensor should be kept with your medication to ensure it can continuously measure the temperature at which it is stored or transported.

Simply insert the sensor in your bag/carry case along with your insulin or medication.

The GlucoMedi Sensor app will show you the updated and current temperature and will send you an alert when the optimal temperature range that you've inputted has been exceeded. You can now take the appropriate action on the go.

# PACKAGE INCLUDES

- 1 Sensor
- 1 Back clip
- 1 3M tape
- 1 Lanyard
- 1 Bracket

# FEATURES

1. Real-time temperature monitoring
2. Push notifications to alert you when the temperature exceeds the limit of your input value
3. Displays readings in charts/graphs
4. Ability to save and export data
5. Easy installation

# DOWNLOAD THE APP

The GlucoMedi Sensor app is available on Apple app store and Google Play.

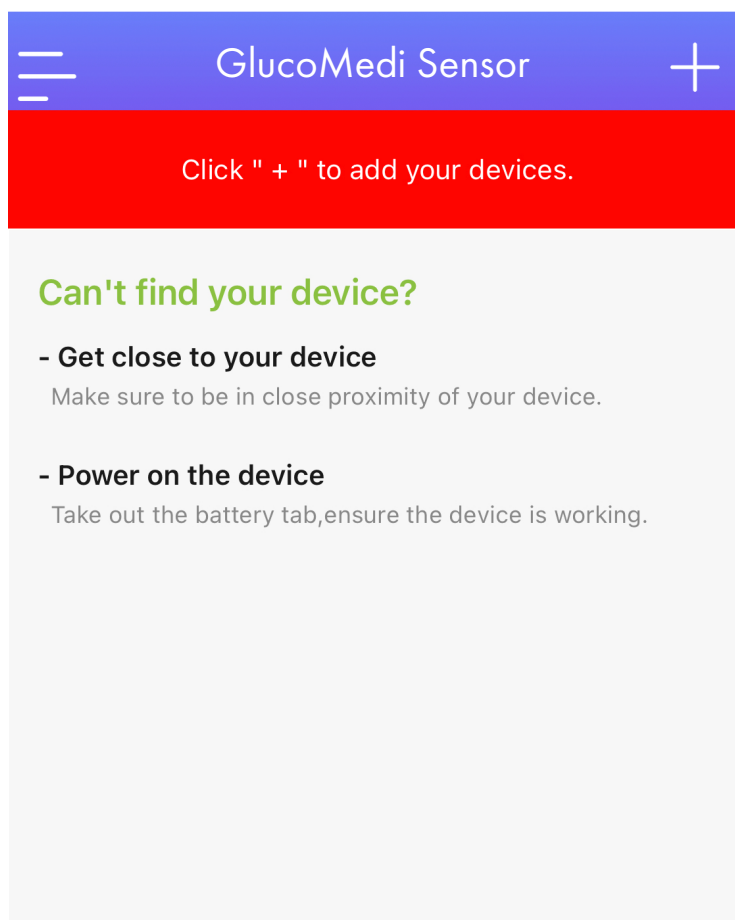
Scan the appropriate QR code for a link to the app download page.



# ADD DEVICE

Follow these steps to connect the sensor to the app

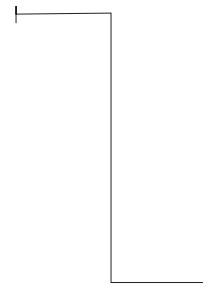
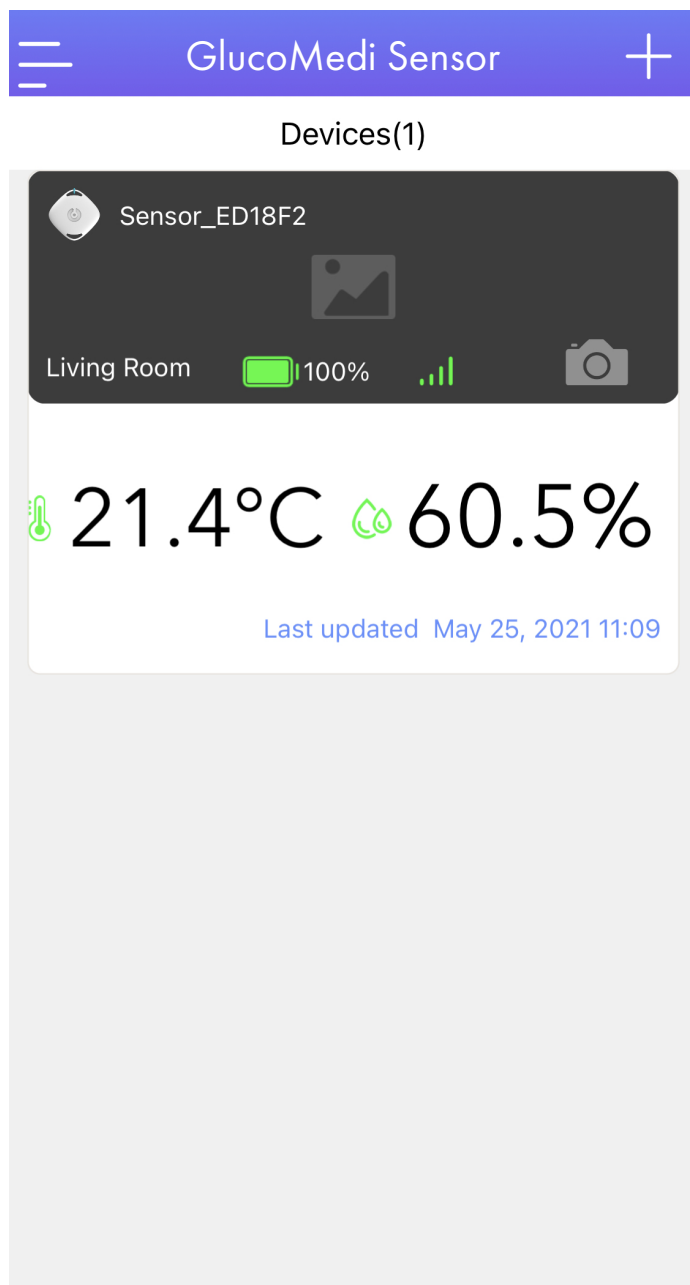
1. Remove the battery insulation sheet from the sensor
2. Run the "GlucMedi Sensor" app on your smart phone
3. Place your sensor close to your phone to connect it to the app



Step 4

Tap "+" to link your sensor with the app

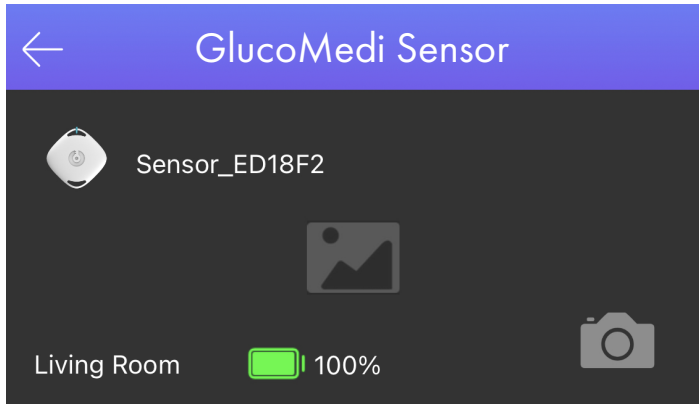
# DEVICE SETTINGS



Step 1

Tap on the grey description box to go to the sensor's settings.

Tap the camera icon to customise the background.



### Device setting

- Device name  
Sensor\_ED18F2 >
- Scenes setting  
Living Room >
- Desired Conditions  
Temperature(Min):\_ \_°C, Temperature(Max):\_ \_°C >  
Humidity(Min):\_ \_%, Humidity(Max):\_ \_%
- Calibration  
Temperature:\_ \_°C, Releative Humidity:\_ \_% >

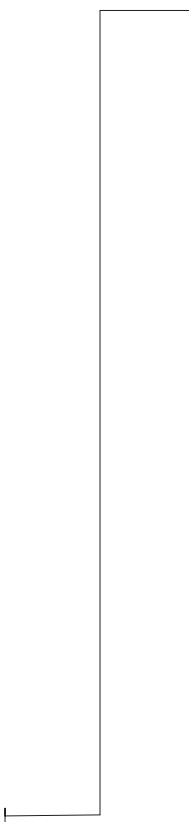
### Device information

- Device ID  
A4:C1:38:ED:18:F2

Delete

## Step 2

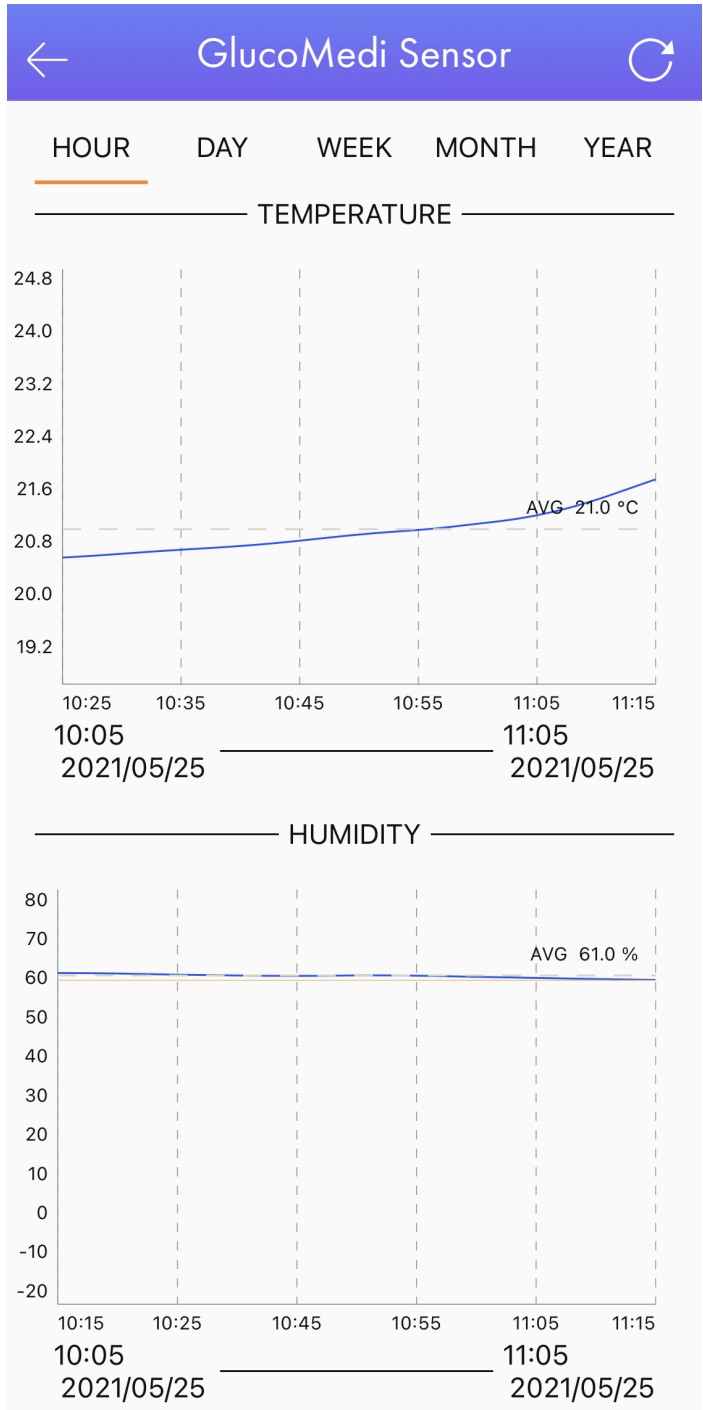
Tap the red delete button to remove the device.



# CHART DISPLAY

The main display for the GlucMedi Sensor shows the following information:

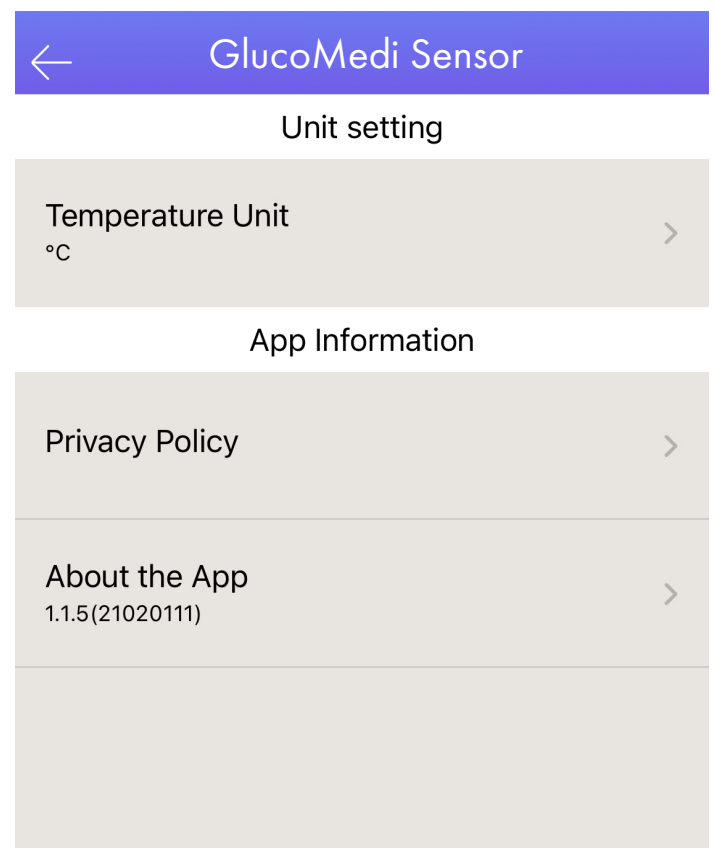
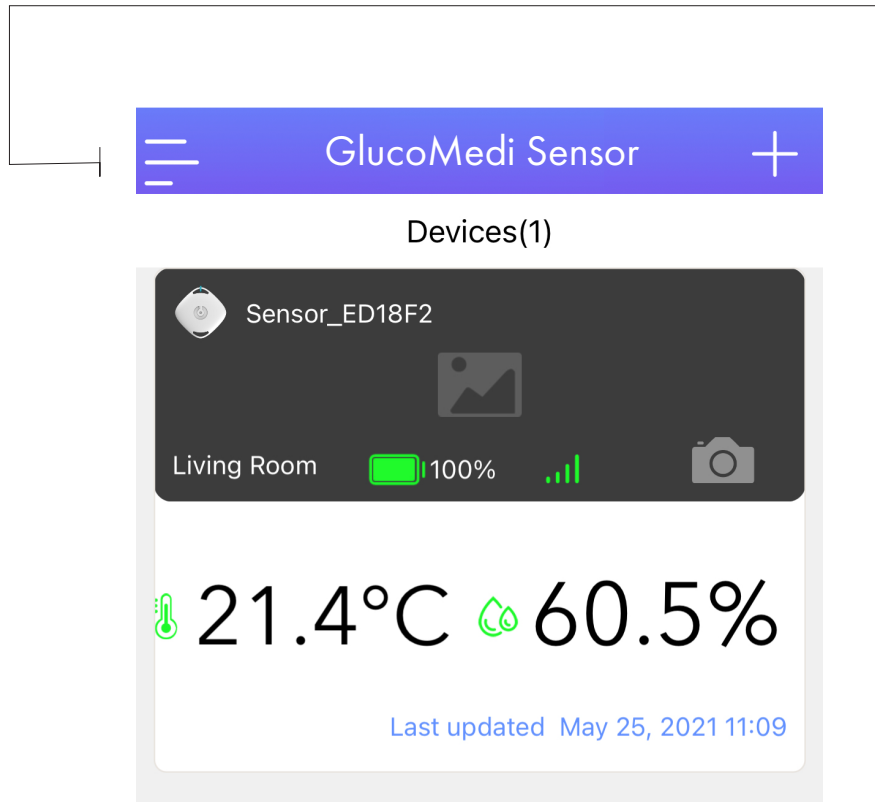
- Header: GlucMedi Sensor
- Section: Devices(1)
- Device: Sensor\_ED18F2
- Location: Living Room
- Battery: 100%
- Signal strength: Full bars
- Temperature: 21.4°C
- Humidity: 60.5%
- Last updated: May 25, 2021 11:09



Tap the data area to show the data charts.



# TEMPERATURE SETTINGS



# SPECIFICATIONS

BATTERY	CR2477 3V 100mAH
STANDBY CURRENT	$\leq 20\mu\text{A}$
PROTOCOL	Bluetooth 5.0
WIRELESS RANGE	50m in ideal conditions
OPERATING TEMPERATURE	-20°C to 85°C / -4°F to 185°F
TEMPERATURE ACCURACY (For 0 - 60°C/32 - 140°F)	+0.3°C / +0.5°F (standard) 0.5°C / +0.9°F (maximum)
WORKING TIME	About 12 months
WIRELESS TYPE	2.4GHz
SIZE	46mm x 46mm x 15mm

# IMPORTANT SAFETY INSTRUCTIONS

Please make sure to follow all the instructions. Do not attempt to repair or service the GlucoMedi Smart Temperature Sensor yourself. Refer all servicing to qualified service personnel.

**Disclaimer:** Be sure to check the manufacturer recommended storage instructions for your medication before making decisions regarding temperature limits and warning alerts.

## CONTACT

For more information, visit our website:  
[www.ibdmedical.com.au](http://www.ibdmedical.com.au)

Customer Support email: [cs@ibdmedical.com.au](mailto:cs@ibdmedical.com.au)

Phone: (02) 8398 7520

Address:

31/330 Wattle Street, Ultimo NSW 2007