

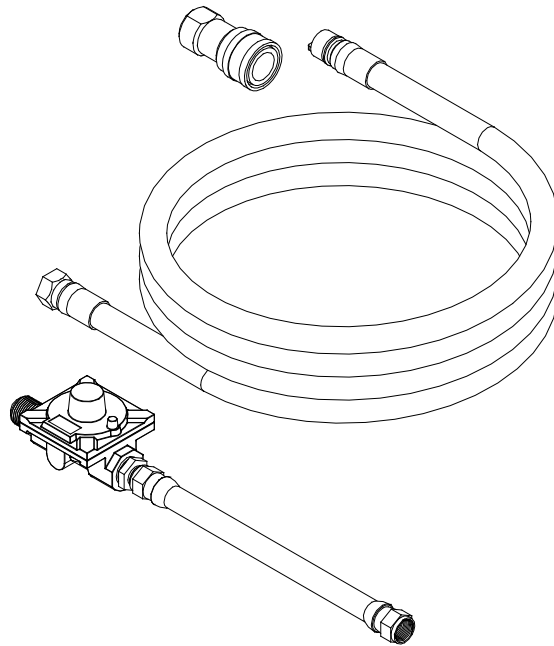
# ASSEMBLY & OPERATING INSTRUCTIONS

---



## Natural Gas Grill Conversion Kit

**Model NO.98523**

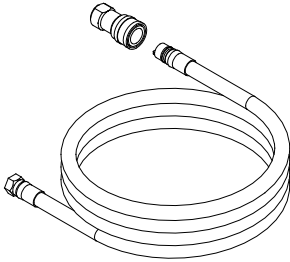


### **Warranty**

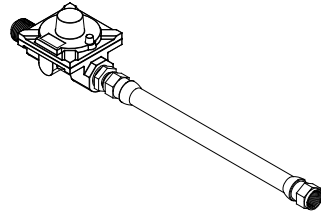
#### **One-Year Full Warranty on Part**

If this part fails due to defective material or workmanship within one year from the date of purchase, call 1-888-980-4933 to arrange for a free repair (or replacement if repair proves impossible)

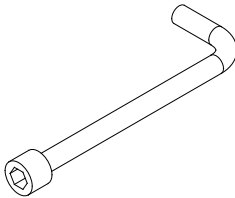
## Model 98523 Parts



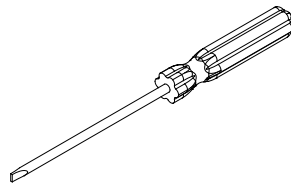
**NG Hose+Quick Connector  
A02120849**



**NG Regulator  
A02120848**



**6mm  
Orifice Sockets  
A02120844**



**Slot Screwdriver  
A02120843**

**Reminder:**

**Please keep the main burner brass LP orifices ,Side Burner Orifice and original LP regulator. just in case you wish to change back from NG to Propane.**

# Natural Gas Conversion

**WARNING! FAILURE TO HEED THESE WARNINGS COULD RESULT IN A FIRE OR EXPLOSION THAT COULD CAUSE SERIOUS BODILY INJURY, DEATH OR PROPERTY DAMAGE.**

Natural Gas Conversion must be performed by a QUALIFIED GAS TECHNICIAN ONLY. The QUALIFIED GAS

TECHNICIAN should ensure compliance of local codes, including but not limited to, requirements and installation

of grill regulator. DO NOT ATTEMPT TO CONVERT YOURSELF. Improper conversion could result in a gas leak

which could cause a fire or explosion and cause serious bodily injury, death or property damage. Leaks due to

improper conversion could occur immediately or slowly over time. If you hear any unusual noises or leaks, smell

gas or unusual odors, or notice anything unusual with the operation of your gas appliance after the installation,

immediately shut off the gas supply and discontinue use until the appliance is repaired by a QUALIFIED GAS

TECHNICIAN.

**Below parts are needed for natural gas conversion:**

## **INCLUDED**

§ Natural gas orifices(Preinstalled In Grill)

§ Quick Connector

§ 10 ft (3.0m) Natural Gas Hose

§ 4" Water Column Regulator with Hose

§ Orifice Sockets

§ Slot screwdriver

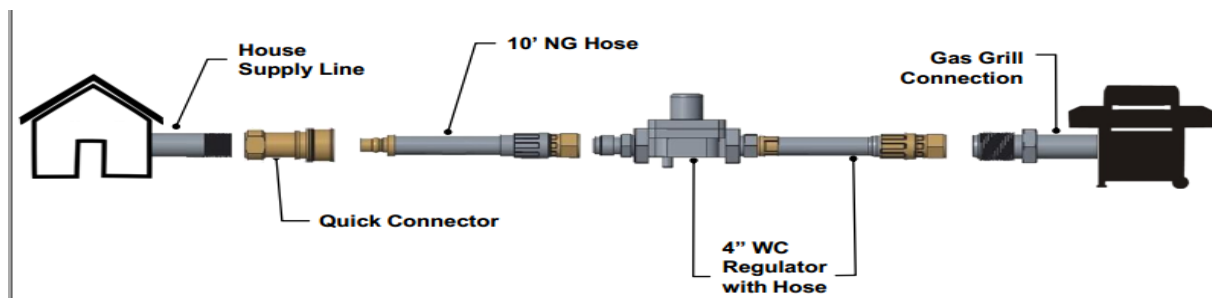
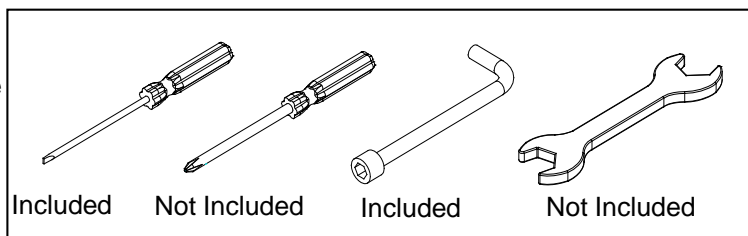
## **NOT INCLUDED**

§ House Supply Line

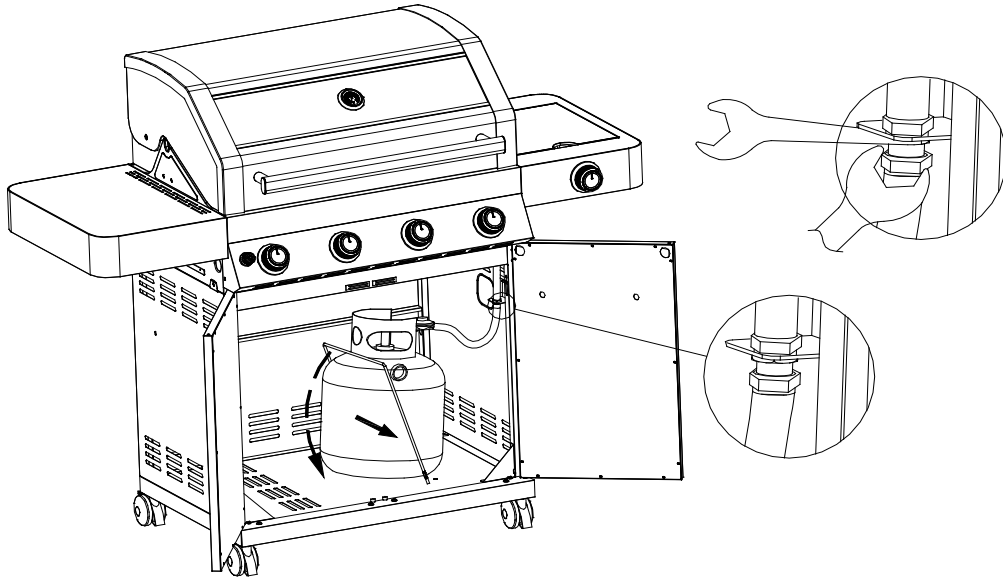
§ Wrench

§ Philips screwdriver

**Tools will be needed for gas conversion**



# GAS CONVERSIONS

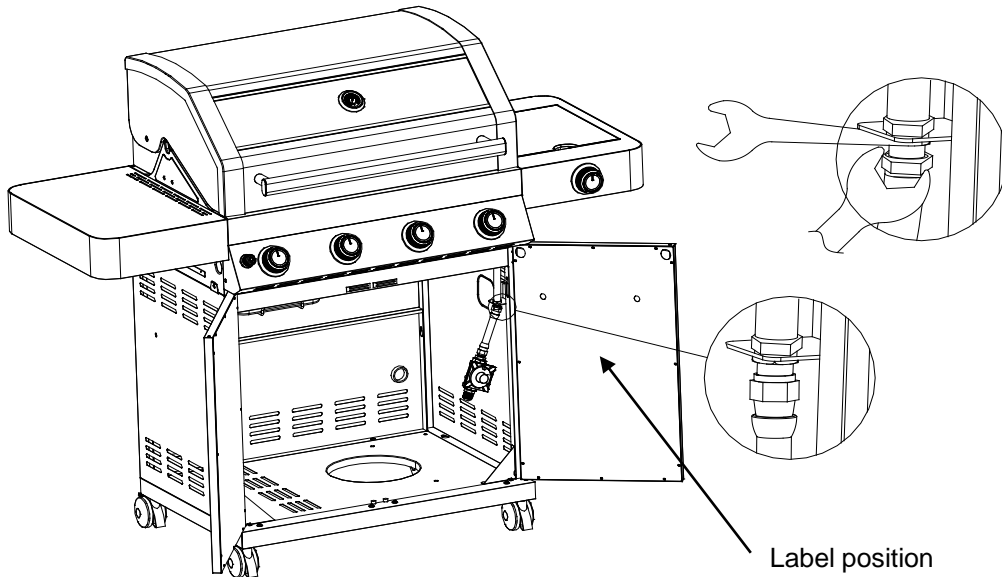


1. Turn off the main gas supply valve.
2. Disconnect LP gas fuel tank (if present).
3. Turn off all burner control valves.
4. Remove the LP gas fuel tank (if present) from the grill cart.
5. Use an adjustable wrench to remove the LP regulator from the manifold.

## **Reminder:**

**Please keep the original LP regulator.**

**Just in case you want to change back from NG to Propane.**

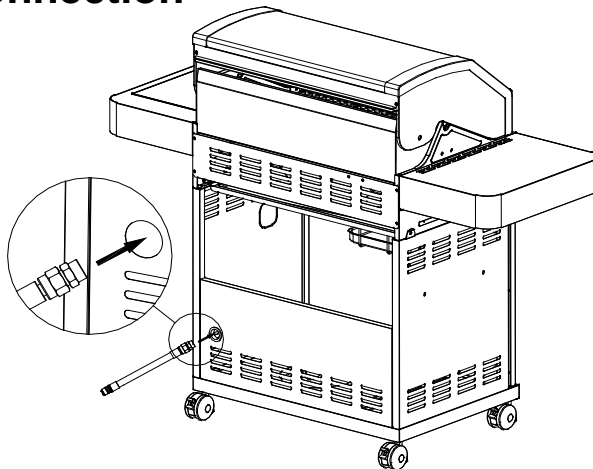


6. Use an adjustable wrench to install the Natural gas regulator hose to the manifold and secure

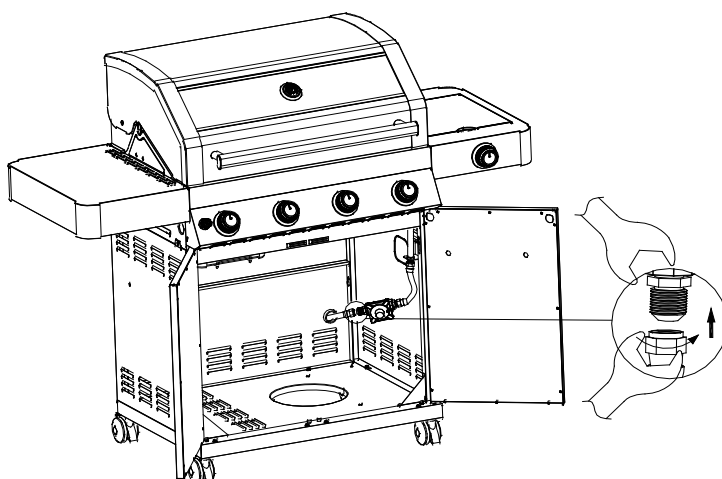
7. After LP is converted to NG, you need to put a label on the location shown below.

# Make Gas Connection

1.Pass the NG hose to grill cart through the back panel

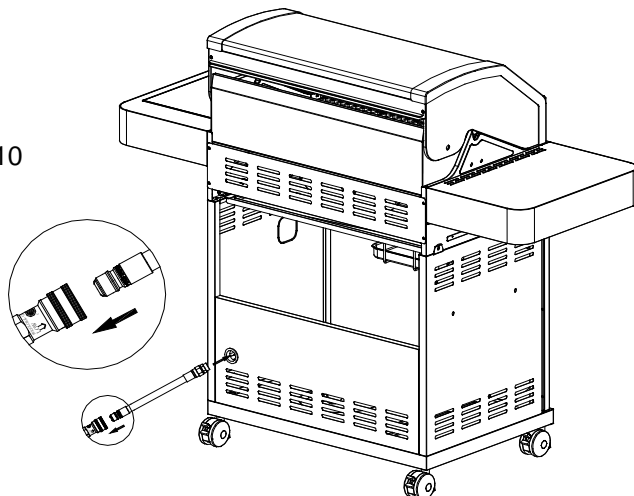


2.Connect the brass connector on one end of the 10 ft (3.0m) PVC flexible gas supply hose to the Natural gas pressure regulator



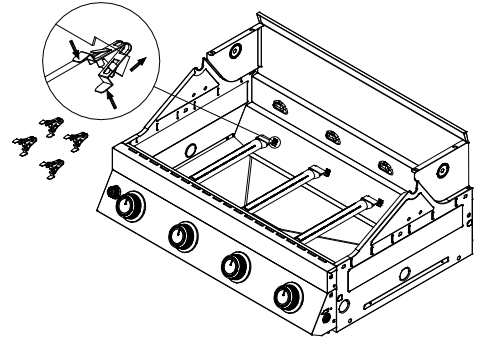
3.Connect the quick connector on the other end of the 10 ft (3.0 m) PVC flexible gas supply hose to the rigid Natural gas supply pipe.

4.Please do leak test after conversion

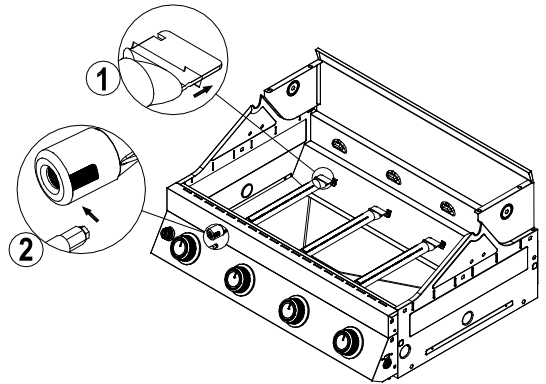


# Change Grill Main Burner Valve Orifices

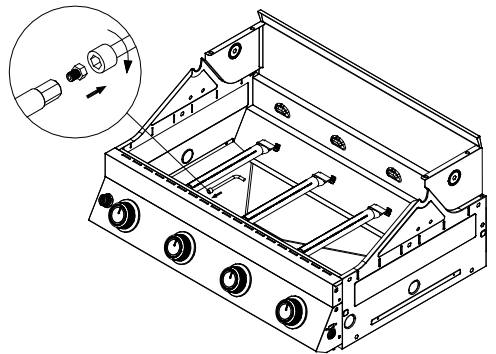
1. Remove the grates and flame tamers.
2. Push back the Clamp Spring which hold the burner in place, the clamp spring will drop off to grease tray or grill cart
3. Remove the burner from the grill by lifting the burner out



- 4: Use a 6 mm socket and wrench or 6 mm nut driver to remove the LP brass orifice from the end of gas valve.

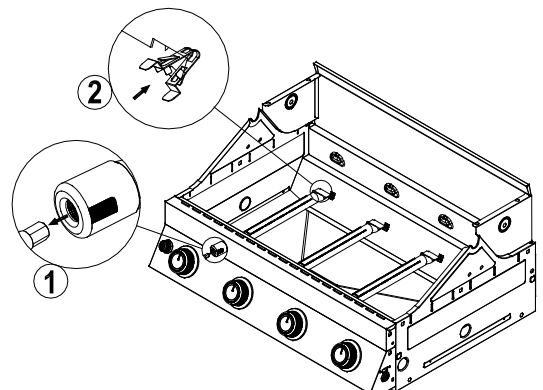


- 5: The NG orifice is pre-installed in grill. That is NG orifice after your remove the LP orifice.



**Reminder:**  
**Please keep the LP orifices.**  
**Just in case you want to change back to LP from NG**

6. Reinsert the burner and reattach using the Clamp Spring previously removed. Repeat the procedure for each main burner



## Change the Side Burner Orifice

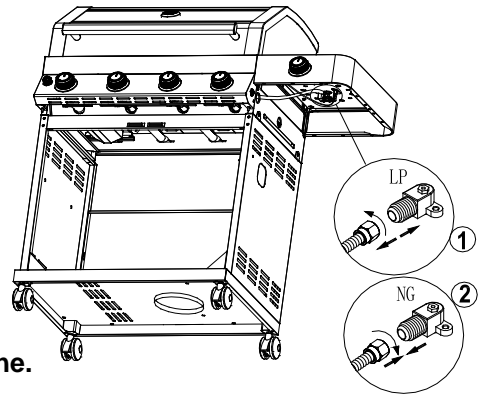
The NG Side Burner Orifice is packed in grill with individual bag marked for NG gas conversion only.

Remove the LP Side Burner Orifice, and install the NG Side Burner Orifice

### Reminder:

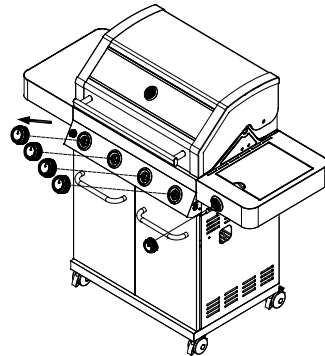
**Please keep the LP Side Burner Orifice.**

**Just in case you want to change back from NG to Propane.**

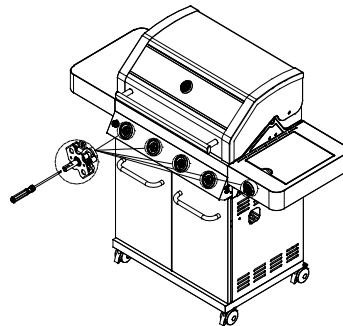


## Adjust High/Low Flame Setting Screw

1: Remove all the control knobs

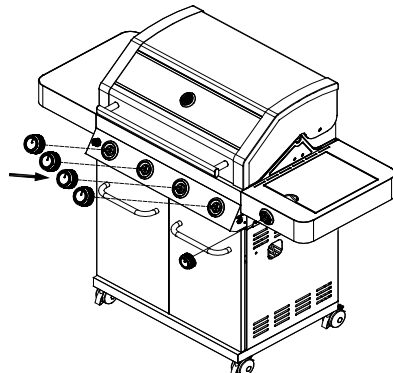


2: Use a flat-blade screwdriver to turn the high flame setscrew clockwise approximately 90°



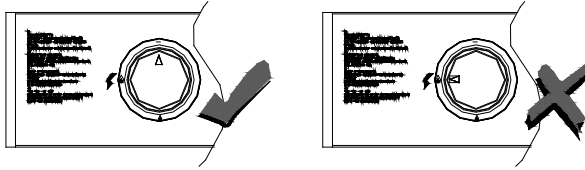
3: Check that burner operates at the new high flame setting. It may be necessary to adjust the screw setting slightly more to get the ideal burner flame height

4: Replace the control knob and turn off the burner

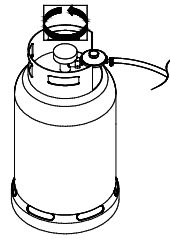


# Procedures for gas leaks checking

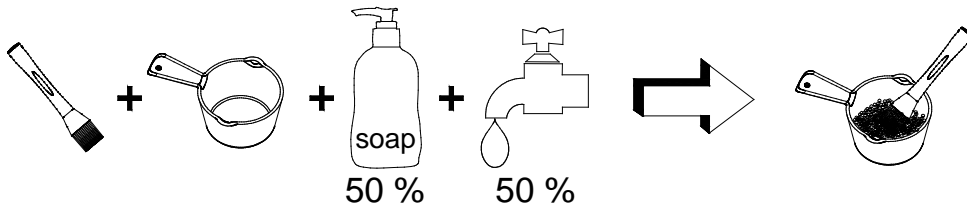
1



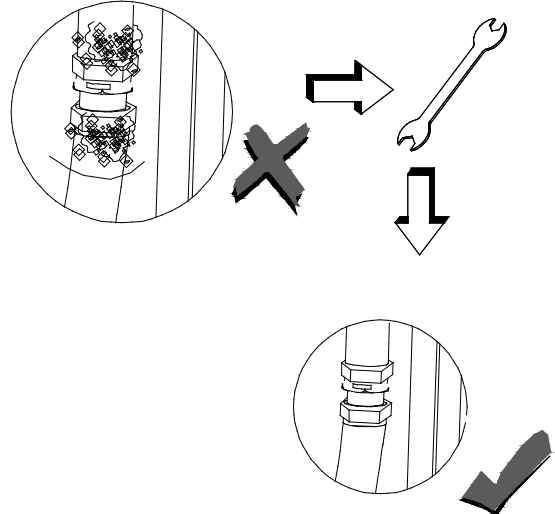
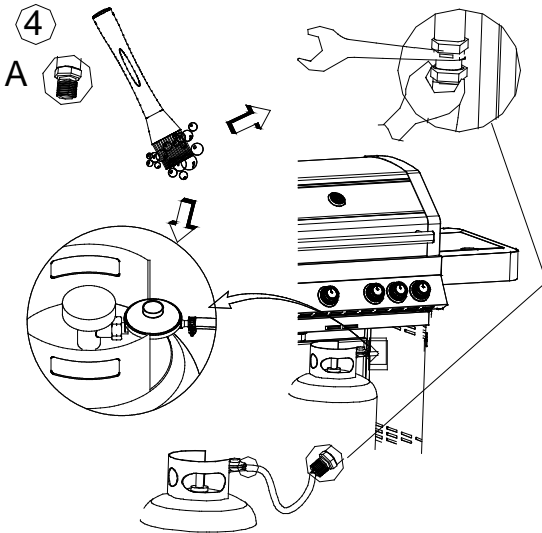
2



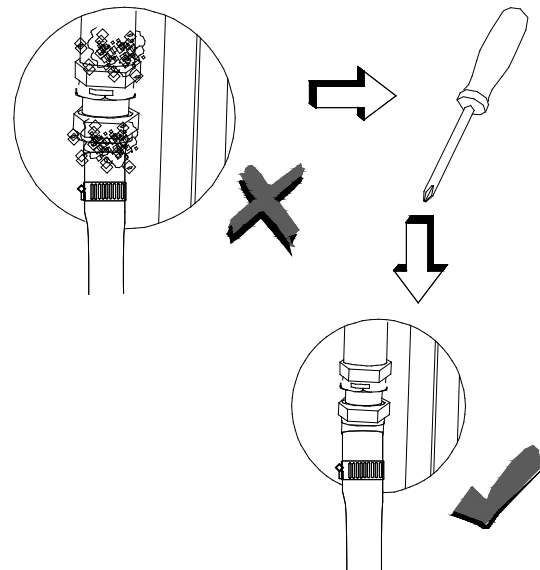
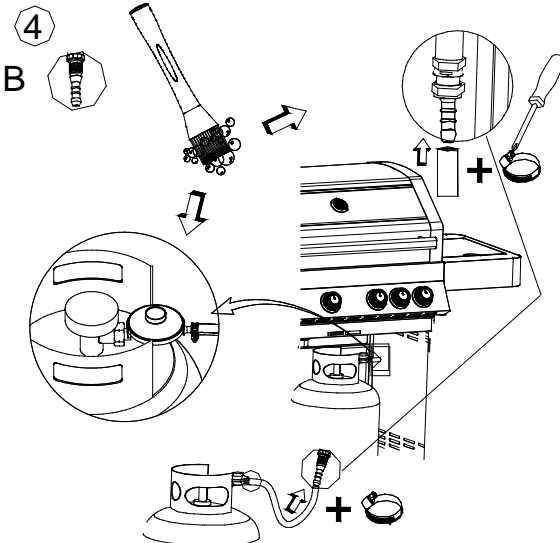
3



4



4







[WWW.MONUMENTGRILLS.COM](http://WWW.MONUMENTGRILLS.COM)

### Product Registration Card

It is simple! Complete and mail your Product Registration Card with the Copy of the Receipt today!

Last name: \_\_\_\_\_ First Name: \_\_\_\_\_

Address: \_\_\_\_\_ City: \_\_\_\_\_ State: \_\_\_\_\_

Zip: \_\_\_\_\_ Phone: \_\_\_\_\_

Email: \_\_\_\_\_ Place of purchase: \_\_\_\_\_

Model Number: \_\_\_\_\_ Serial Number: \_\_\_\_\_

Date of Purchase: \_\_\_\_\_

Please return your Product Registration Card today to validate the warranty service