



# Electrical requirements for wired hot tubs

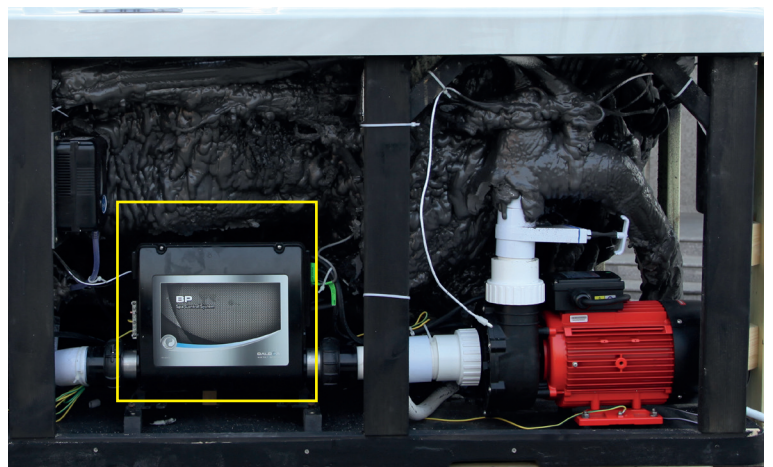
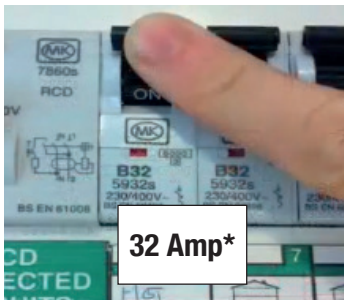
## CONNECTING HOT TUB TO RCD AND CONSUMER PANEL:

- All hot tubs must be wired with the appropriate sized wiring. Failure to do so will cause equipment damage and will not be covered by your warranty
- All permanently wired hot tubs must be protected with an appropriately sized RCD (Residual Current Device) in the consumer panel.

## ADDITIONAL ITEMS NEEDED TO HELP COMPLETE ELECTRICAL CONNECTION:

32 amp RCD Breaker, 6 mil Electrical cable (check length and width for amperage and distance), 32mm Cable gland, and Isolator switch

32amp Breaker  
(RCD Protected)



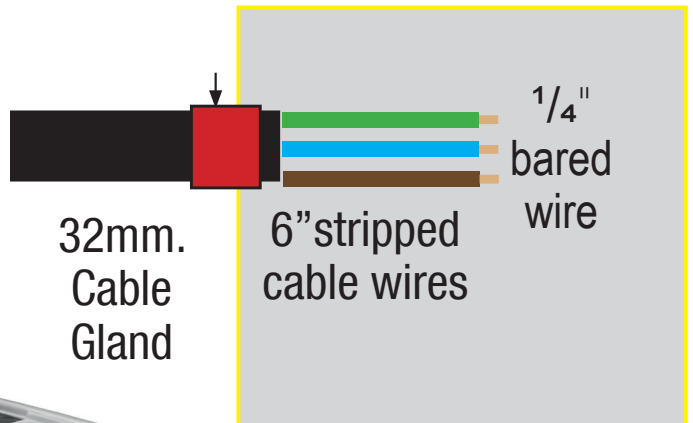
6 mil.  
Cable

Outside  
isolation  
switch



Add  
Cable  
length

+ 5 Metre  
extra cable at spa



\* Suggested Amperage. For specific hot tub model amperage requirements check the hot tub model.