

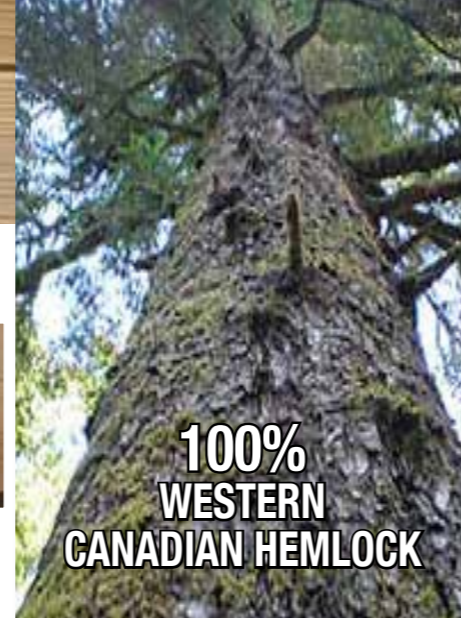
SAUNAS



SAUNA CABIN CONSTRUCTION



Why Hemlock Vs Cedar?
Hemlock has a neutral smell when compared with Cedar. Essential oils work better and lighter fragrances are easier to smell.



100% WESTERN CANADIAN HEMLOCK

Our saunas are made from 100% Canadian Hemlock wood that is responsibly harvested according to FSC regulations

SOLID FRAME

Solid wall/stud wall, not particle or MDF board, stronger structure, less chance of warping.

PRE-MADE PANELS

Tongue and groove panelling on both sides, glued and pinned with nails.

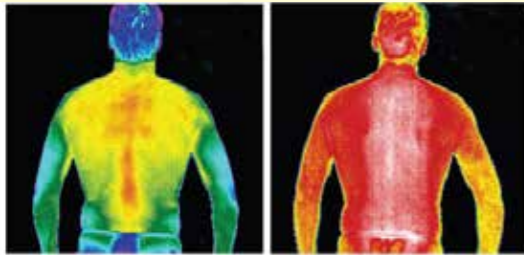


Magnetic door excludes drafts.

8 mm Safety Glass & 180° Hinges

Our 180° Degree high quality hinges allow easy access to your sauna. Our thicker door and premium hinges allow for a snug fit.

HOW SAUNA HEATING WORKS - HEATING THE BODY CORE



All sauna heating systems work in the same way to heat the core of the body.

CANADIAN SPA - MICA FAR INFRARED

MICA Heaters heat evenly and are more efficient than standard carbon fibre heaters and with low EMF levels and no off gassing, They are very effective at heating your body core and helping your body detox.

EVEN SURROUND HEATING

In your Canadian Spa Far Infrared Sauna only about 20% of the heat goes to heat the air and the other 80% directly heats your body. The result is deeper tissue penetration. Health benefits start at lower heat, starting 32°C. You can set your sauna at a more comfortable temperature.

DIGITAL CONTROLS

Easy to view and change temperature settings with our digital control panel.

TIMER SETTING

Adjust the amount of time you wish to spend in the sauna at your desired temperature.

PRE-HEAT SETTING

Schedule your sauna time everyday by setting up a pre-heat time so that it is always ready



Fig 1. POWER & HEATING lights illuminated to show sauna in operation



Fig 2. Press SET button and hours and minutes are displayed

TRADITIONAL SAUNA HEATING :

Traditional Saunas heat room to 70-80°C to get core to 40-50°C, they need a bigger room for the stove, not as efficient as infrared. High energy costs.

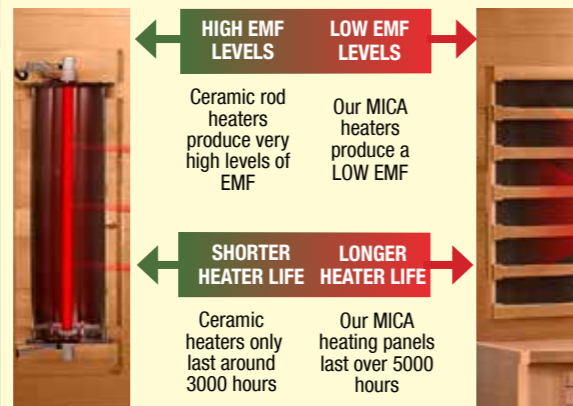
UNEVEN AND INEFFICIENT HEATING

Traditional saunas heat less effectively and create more heat at the top of the sauna with less heat at the base.



CERAMIC ROD NEAR INFRARED HEATED SAUNAS:

UNEVEN HEATING
Targets heat in a limited area of the ceramic rod. Produces a shallow heat which does not penetrate far beyond the skin's surface. EXTREMELY HIGH EMF LEVELS



We test all our saunas with people, showing our EMF readings where they count the most at head level

Infrared saunas leave you feeling invigorated, not depleted like conventional saunas

SAUNAS

Jasper Sauna

Affordable Luxury

Canadian Spa Company introduces a sauna that boasts many of the features you would find on full featured saunas.



Jasper Sauna

Seats: 1
Size: W102 x D90 x H191cm
W41 x D36 x H76"
Electrical: 13 A
Total Wattage: 1250 W
Heaters: 4
KY-10014 0708296543071



- Carbon Fibre heating • Digital Controls
- Tile Floor • Led Lighting • Bluetooth speakers
- Aromatherapy • Plug & Play

Chilliwack Sauna

W104 x D97 x H191cm
W41 x D38 x H76"
1485w - 6 Heaters
KY-10007
0708296542753



Huron Sauna

W120 x D104 x H191cm
W47 x D41 x H76"
1805w - 8 Heaters
KY-10008
0708296542760

Aspen Sauna

W137 x D137 x H191cm
W54 x D54 x H76"
1805w - 7 Heaters
KY-10011 0708296542791

Whistler Sauna

W177 x D132 x H191cm
W70 x D52 x H76"
2605w -11 Heaters
KY-10010 0708296542784



Banff Sauna

W146 x D117 x H191cm / W58 x D46 x H76"
2005w, 9 Heaters, KY-10009
0708296542777

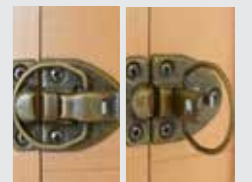
STANDARD FEATURES (EXCLUDING JASPER)



Heated tile floor



Exterior Lighting



Easy Clip system



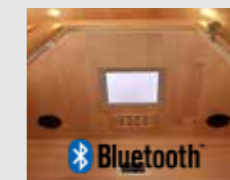
Cool Handle



High output LED Light



Aromatherapy Oil Dispenser



Speakers



Fresh Air Vent