

## Nexersys Commercial 3.0 Upgrade Assembly Guide

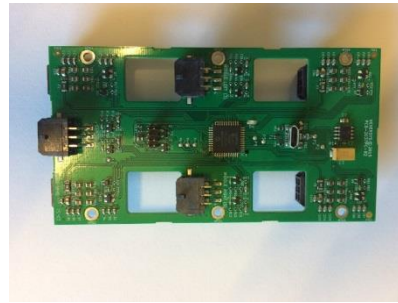
November 2016

### Parts List:

- A. 21.5" AIO Android Tablet



- B. Aggregator Printed Circuit Board (Agg PCB)



- C. USB Cord



- D. Power Supply



- E. Power Cord Adapter



- F. Agg PCB Protective Sleeve



- G. Spine Extender



## **Tools Required:**

1. Philips head screwdriver (med)
2. Hex Metric 6mm Driver

## **Assembly Steps {**FOLLOW PRECISELY FOR BEST ASSEMBLY EXPERIENCE**}:**

1. Remove all parts from packaging.
2. Remove black plastic spine cap from top of NXSC spine.



3. Gently re-route the 7 Accelerometer Cables back into the frame and up through the top of the spine.



*(NOTE: IN SOME UNITS, A PLASTIC TIE WILL SECURE THE CABLES IN THE SPINE. IF IT IS PRESENT ON YOUR UNIT, CUT THE TIE PRIOR TO ROUTING THE CABLES UP THROUGH THE TOP OF THE SPINE. BE CAREFUL AND DO NOT CUT THE CABLES)*

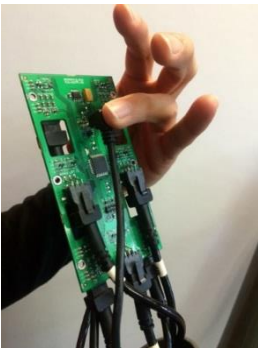
4. Insert USB Cord {C} through the round frame opening and up through the top of the spine.



5. Gently connect the Accelerometer Cables to the Agg PCB {B} (NOTE: MATCH CABLE NUMBERS TO SAME CONNECTOR NUMBERS – 1-1, 2-2, 3-3, etc...)



6. Connect USB Cable {C} to Agg PCB {B}.



7. Wrap Protective Sleeve {F} around Agg PCB {B}.



8. Remove NXSC handle.
9. Ensure Power Cable, USB Cable & Audio Cable extend out of the round frame opening on the front of the spine.



10. Gently slide Spine Extender {G} onto top of Spine inserting the Agg PCB in Protective Sleeve to slide up into the Extender.



11. Attach handle onto spine.



12. Attach Tablet {A} onto Frame with 4 screws.



12.A. Make sure table angle does not allow it to contact the bolt on the front bracket.



13. Plug USB Cable into Tablet.



14. Attach Power Cord Adapter {E} to end of the Power Cord extending out of the top of the Frame and plug into Tablet. Tuck away the extra power cord into the spine.



15. Plug in Power Supply to Power Cord extending out of the base of the NXSC.



16. Plug Power Supply into Power Outlet.

17. Power Up Tablet and follow prompts on screen to initialize software.