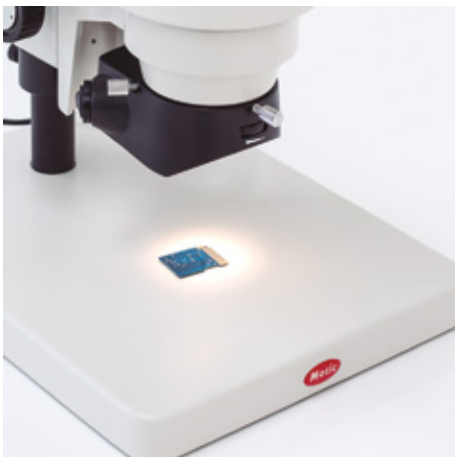


SMZ160 Series

SMZ-160-TP





SMZ160 Series

SMZ-160-TP

Optical system	Greenough
Observation tube	Trinocular head
Inclination	45° inclined
Trinocular light split	Fixed 50:50
Interpupillary distance	55-75mm
Diopter adjustment	On both tubes, +/- 5 diopter
Eyepieces	Widefield WF10X/20mm
Objectives system	Zoom, ratio 6:1
Objectives	0.75X~4.5X
Working distance	100mm
Stand type	Pole type stand
Head holder	For Ø 25mm column and Ø76mm head
Focus mechanism	Coarse focusing system with tension adjustment
Focusing stroke	43mm
Accessories included	Dust cover
Dimensions LxWxH	280x220x408mm
Base	280x220mm
Column/Arm	Height 215mm, Ø25mm
Net weight	3.4kg
Notes	Transport and storage case