

infantry[®]



COPYRIGHT BY INFANTRY CO.LTD

WWW.INFANTRYCO.COM



USER MANUAL

CONTENTS

INTRODUCTION	2
WARRANTY BOOKLET	3
PRODUCT SPECIFICATION	4
QUARTZ MOVEMENT WATCH SETTING	5
DIGITAL CHRONOGRAPH WATCH SETTING (6 DIGITS)	10
CHRONOGRAPH WATCH SETTING	13
SEMI-MECHANICAL WATCH SETTING	16
STAINLESS STEEL BRACELETS ADJUSTMENT INSTRUCTION (ONE)	17
STAINLESS STEEL BRACELETS ADJUSTMENT INSTRUCTION (TWO) ..	21
NATO BRACELETS ADJUSTMENT INSTRUCTION	25
KNOWLEDGE OF MAINTENANCE	26
WARRANTY RECORD	30

• INTRODUCTION

Thank you very much for choosing a INFANTRY watch.
For proper and safe use of your INFANTRY watch,
Please read carefully for the instructions in this booklet before using

The Following booklet is suitable for Infantry model below:

1. WATCH WITH TIME ONLY
2. WATCH WITH TIME, DAY AND DATE
3. WATCH WITH DIGITAL DISPLAY
4. WATCH WITH LUMINOUS DIAL
5. WATCH WITH CHRONOGRAPH
6. WATCH WITH SEMI-MECHANICAL

• WARRANTY BOOKLET

Within one year from the date of purchase, we guarantee free repair/adjustment service against any defects according to the following guarantee regulations, provided that the watch was properly used as directed in this instruction booklet

Exceptions from warranty:

- 1: Troubles or damage caused by accidents or improper usage
- 2: Scratches or grime caused by use (Watch Case, Straps, Crown)
- 3: Problems and damage caused by acts of god, natural disasters including fire, floods or earthquakes.
- 4: Unable to provide a valid warranty card of date of purchase

• PRODUCT SPECIFICATION

Operation temperature range:	-10°C ~ +50°C
Water Resistant:	3ATM or 5ATM
Product operation standard:	GB/T 6044
Production level:	Top Grade

Caution:

Usage of exceeding the operation temperature range may result in damaging the watch movement.

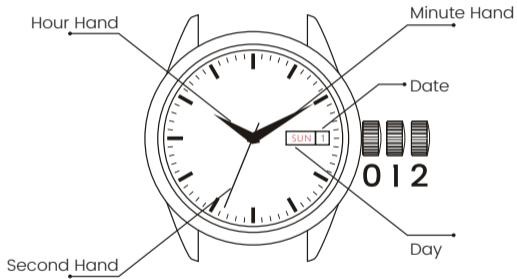
• QUARTZ MOVEMENT WATCH SETTING

SETTING THE TIME

1. Pull out the crown to position 2.
2. Turn the crown until the correct time appears.
3. Push the crown back into position 0.

SETTING THE TIME AND DATE

1. Pull out the crown to position 1.
2. Turn the crown until you reach the correct date.
3. Pull out the crown to position 2.
4. Turn the crown until you reach the correct time.
5. Push the crown back into position 0.



DAY LANGUAGE SETTING:

Steps of setting English or Spanish as your Date & Day display

1. Pull out the crown to position 2, and turn the hour hand clockwise until pass the 6 o'clock.
2. Push the crown back into position 1, and turn the weekday to the correct day appears with the Language you prefer to.
3. Pull out the crown to position 2, and turn it until the correct time appears.
4. Push the crown back into position 0.
5. Please do NOT process this setting when the watch is reading between 9:00pm to 5:00am.

SETTING THE TIME, DAY AND DATE

1. Do not adjust the day/date when the watch is reading between 9:00pm and 5:00am, otherwise it may not change correctly.
2. Pull out the crown to position 1.
3. Turn the crown clockwise until you reach the correct Day of week.
4. Turn the crown counterclockwise until you reach the correct Date of month.
5. Pull out the crown to position 2.
6. Turn the crown until you reach the correct time.
7. Push the crown back into position 0.

LUMINOUS DIALS

The paint on the dial and hands helps you with reading the time in a dark place. The luminous paint stores light (daylight or artificial light) and glows in a dark place. It's free from any radioactive substance or any other material harmful to a human body or environment.

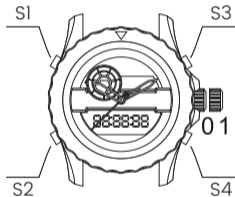
- The light emission gradually becomes weaker as time passes.
- The duration of light ("glow") will vary depending on the brightness, types of and distance from a light source, exposure time, and the amount of the paint.
- The paint may not glow and/or may dissipate quickly if exposure to light was not sufficient.

• DIGITAL CHRONOGRAPH WATCH SETTING (6 DIGITS)

TIME SETTING (DIGITAL)

Under Normal Time Display Mode:

1. Press S2 until the display screen start flashing, then press S4 to until it switch to the desired parameter (Minute, Hour, Day, Month, Week)
2. Press S3 to adjust the desired item.



TIME SETTING (QUARTZ)

1. Pull out the crown to position 1.
2. Turn the crown until the correct time appears.
3. Push the crown back into position 0.

CHRONOGRAPH

The display range of the chronograph is 23 hours 59 minutes, 59.99 seconds.

Under Normal Time Display Mode:

Press S2 one time to enter chronograph mode

Event Mode: S3---Start, S3---Stop (Repeat S3, Time In/Out),

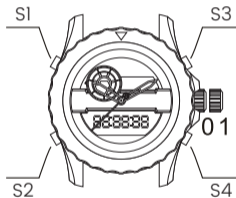
S4---Reset

Split Mode: S3---Start, S4---Split, S4---Release (Repeat S4 for each split), S3---Stop, S4---Reset

ALARM

Under Normal Time Display Mode:

1. Press S2 two times to enter alarm setting mode.
 2. Press S4 until it switch to the desired parameter.
 3. Press S3 to select desire value accordingly.
 4. Press S4 to finish setting alarm.
- a) Press S3+ S4 to turn on/off the alarm.
- b) Press S4+S2 to turn on/off chime function.



• CHRONOGRAPH MOVEMENT WATCH SETTING

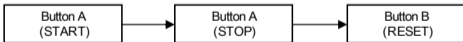
SETTING THE TIME

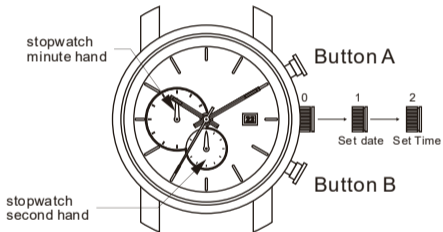
* The measurement time is indicated by the stopwatch hands that move independently of the center hands

* The stopwatch can measure up to 60 minutes

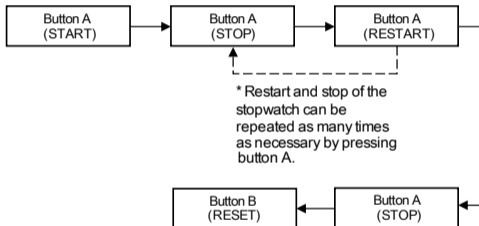
Standard measurement (e.g. 100m race)

Press the buttons in the following order :





Accumulated elapsed time measurement (e.g. basketball game)



• SEMI-MECHANICAL WATCH SETTING

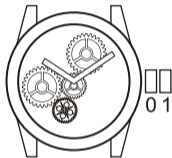
SETTING THE TIME

1. Pull out the crown to position 1.
2. Turn the crown until the correct time appears.
3. Push the crown back into position 0.

WIND UP

1. Stay the crown at position 0.
2. Wind the watch by turning the crown clockwise
3. Wind it until it is fully wound, you will feel resistance as the mainspring is tightens.
4. Now the watch is fully winded.

*Wind it daily to make sure it has consistent power throughout the day.



• **STAINLESS STEEL BRACELETS ADJUSTMENT INSTRUCTION (ONE)**

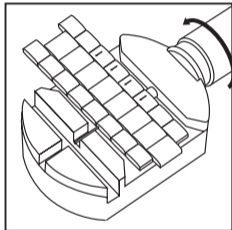
STEP 1.

Place the bracelet onto the link removal tool, insert tip from the tool into the hole on the underside of the band. (removal direction should be the direction where the pin to be push out)



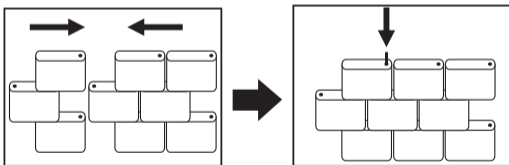
STEP 2.

Place the link removal tool horizontally, turn the pusher of the removal tool clock-wise to push out the pin from the band. Use a clamp to take out the pushed pin.



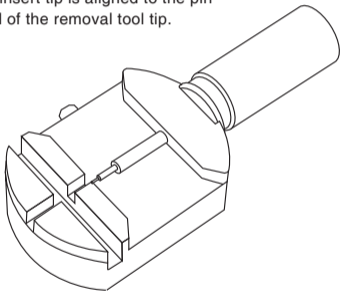
STEP 3.

After removing the necessary number of links, tap the remaining pins back into places using the link removal tool.

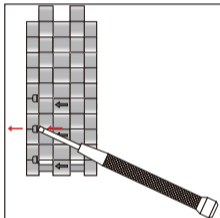


CAUTION:

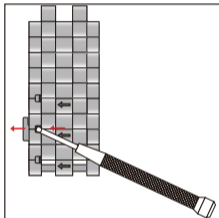
Please make sure the insert tip is aligned to the pin hole to avoid damaged of the removal tool tip.



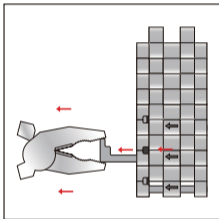
• STAINLESS STEEL BRACELETS ADJUSTMENT INSTRUCTION (TWO)



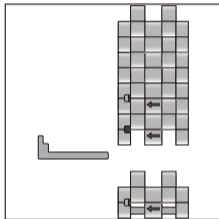
1. Follow the arrow sign direction underneath the band, use a mini screw-driver and push outward following the arrow direction.



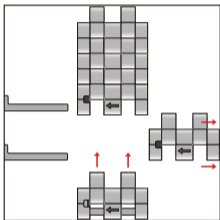
2. Push out the band cartage.



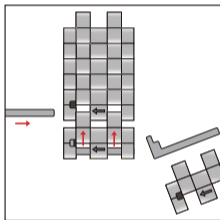
3. Use a clamp to take out the band cartage.



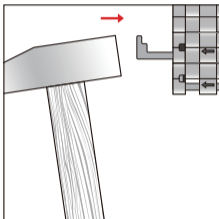
4. Once the band cartage is taken out, you may disassemble the band.



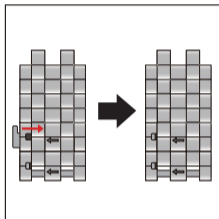
5. Confirm the needed quantities of band cartage to be remove.



6. After taken out needed band cartage, place the band back together following the red arrow sign shown in the picture.



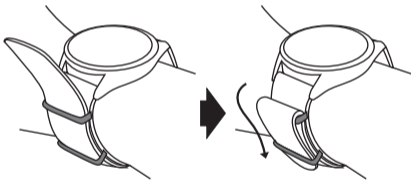
7. Use a hammer to hammer back the band cartage into the band link.



8. Once the cartage is completely inserted, it is complete.

• NATO BRACELETS ADJUSTMENT INSTRUCTION

If the strap is too long, use the two rings and tug it back in.



• KNOWLEDGE OF MAINTENANCE

QUARTZ WATCH:

A quartz movement utilizes a battery as its primary power source and is typically the type of movement that you will find in your standard, no frills watch. To create power in quartz watch movements, a battery sends an electrical current through a small quartz crystal, electrifying the crystal to create vibrations. These vibrations keep the movement oscillating and drive the motor to move the watch hands. The daily time difference of a top grade quartz movement watch is +/- 0.5 second. Our company internal standard guarantee our "Infantry" quartz watch monthly time differences is +/- 20 seconds.

WATER RESISTANCE:

“Infantry” watch is well known to meet the standard of 3ATM or 5ATM.

ATM or “atmospheres” is the amount of pressure a watch can withstand before leaking. A 3ATM or 5ATM watch will withstand pressures equivalent to about 30 meters or 50 meters under water. It is important to note that this is a measure of pressure NOT depth. For example, the pressure from the water coming from the shower hitting the seals of the watch is far greater than 5 atmospheres.

3ATM – Water resistant to 30 meters (100 feet). Will withstand splashes of water or rain but should not be worn while swimming or diving.

5ATM – Water resistant to 50 meters (165 feet). Suitable for everyday use and cold water bathing but not suitable for swimming or diving.

3ATM or 5ATM watch is not suitable to be used in warm or hot water environment, as hot temperature will accelerate the water resistant material of the watch. If a mist is spotted on the glass surface of the watch, we suggest you to send the watch back to factory for repair.

Extreme temperature changes can cause moisture to form in a watch face. Going from a very cold area to a warmer area can cause the watch to fill with condensation.

How To Remove Moisture?

1. Use the sun. Evaporate the condensation and defog the watch. Lay the watch in the sun face up so the heat from the sunlight can dry out the moisture in the watch. The heat from the sun will “evaporate” the moisture or condensation from the watch.

2. Use a blow dryer. Set the watch in a safe place such as a marble countertop and use the blow dryer on low heat. This is to lightly heat up the watch and remove the condensation. Use with caution as high heat can damage a watch and burn your skin

• WARRANTY RECORDS

DATE	SEAL
ADDRESS OF RETAIL STORE	