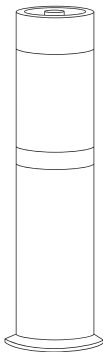


# **a**romatech

SCENT BETTER



**AroMINI**

Essential and Aroma Oil Diffuser

# Contents

Discover the Power of Scenting!.....	4
Features.....	4
Technology.....	4
Specifications.....	5
Diagram of Parts.....	6
Where to Place.....	6
Usage Suggestions.....	7
Cautions and Notices.....	8
Installing Fragrance Bottle.....	9
Cleaning the Diffuser.....	9
Usage Cautions.....	9
FAQs.....	10
Troubleshooting Tips.....	13

## **Discover the Power of Scents!**

Congratulations on your purchase of the AromaTech AroMini! Scent is a fantastic way to express yourself, reduce stress, enhance happiness, boost memory, increase energy, sleep better, and uncover a host of other benefits. The AroMini will change the way you think about scents and reveal so many ways to use them effectively in your home or business. You'll simply add your favorite AromaTech scents and transform your space into whatever you need it to be, whether your favorite scent profile is relaxing, warm, floral, stimulating, fruity, earthy, or spicy.

The AroMini allows you to easily tailor your scent experience to your preferences and space. With unique cold-air diffusion technology, this diffuser scents your environment subtly and consistently while preserving the quality of your 100% essential or aroma oils. Its sleek design and modern aesthetic look great and will help you make any space more inviting.

### **Features**

- Heat-free cold air diffusion technology that subtly disperses essential oil into the air
- Adjustable intensity
- Energy efficient
- Quiet Operation
- Eco-friendly - made from recycled aluminum

### **Technology**

The scent is diffused through nebulization, a process that breaks down fragrance oil into a very fine dry mist without leaving any residue. This preserves your essential oil blends and their olfactive and therapeutic powers without diluting the oil in water, heating it, or adding solvent. AromaTech's nebulizing diffusers work without heat or water to diffuser fragrances and provide a consistent and uniformly scented environment that remains the same day after day.

## Using Your AroMini

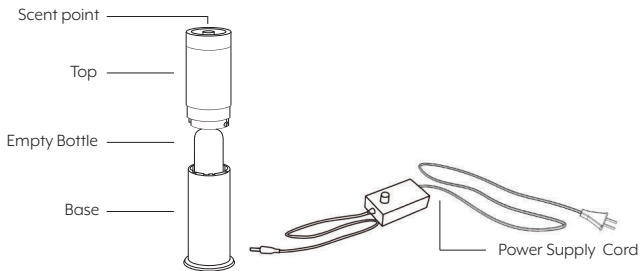
Getting started with your AroMini is easy! Remove the device, bottle, and power adapter from the package. Fill the bottle with the AromaTech essential or aroma oil of your choice. Insert the narrow tube into the bottle, and screw the bottle into the top part of the device. Keeping the device upright, place the bottle and diffuser inside the bottom, lining up the top and bottom parts using the insertion points and turning to lock the two pieces together securely. Plug the included power adapter into the device and plug it into the wall. You are now ready to start enjoying your delightfully scented space. To set the intensity, use the dial on the power adapter. We recommend starting at “minimum” and increasing the intensity gradually until you find the right setting for your space.

***Tip: Make sure the top and the bottom of the diffuser are connected correctly and securely by firmly tightening the diffuser.***

## AroMini Specifications

Product Name	AroMini
Dimensions	11" x 3.5" 105*105*265mm
Output Voltage	DC12V
Input Voltage	110-240V
Power	2.2 W
Bottle Capacity	120ml. / 4oz.
Coverage	93 sq.m. / 1,000 sq.ft.
Weight	1 kg / 2.2 lbs

## Diagram of Parts



## Where to Place Your AroMini

Your AroMini is designed to be used on a stable, level surface such as a shelf or table. You may adjust the intensity using the dial on the power adapter to accommodate smaller or larger spaces. To find the perfect location for your AroMini, look for a location in the room with a lot of natural airflow. You can determine the direction of airflow by lighting a match and blowing it out, then observing which direction the smoke travels: this is also the direction scent will travel.

You may want to try your AroMini in a few different places before choosing the perfect spot. Be sure not to place the device where it might be tipped over, as this may cause leakage of essential oils. Make sure children and pets do not have access to it, and avoid letting aroma oil make contact with wood or other delicate surfaces. Do not place the device near an open window or door or an exhaust fan or vent, as this will lead to the scent escaping the space instead of staying within it.

**Below are our suggestions:**

- Choose the location where the aroma oil molecules can use the natural airflow in a room. This is particularly important with air-conditioned spaces. The best location for the AroMini is where there is a lot of airflow.
- If you are not sure of the direction of the airflow, simply turn on the AroMini and using a flashlight point it at the scent output and watch where the scent will travel. Alternatively, light up a match and blow it out immediately. The direction of the scent or smoke will tell you which way the fragrance will travel.
- The AroMini is a luxury and aesthetically beautiful device. Keep it always in the open area and do not hide it behind or under pieces of furniture.
- Try a variety of locations and settings until you are happy with scent coverage. Give AroMini a little time to adjust to the new location and setting before changing it again.

**CAUTION:** Always be cautious of where you are placing the AroMini. Make sure it cannot be tipped over as that may cause some aroma oil to leak out. Keep out of reach of children. Avoid getting aroma oil liquid in contact with wood or other delicate surfaces.

**NOTE:** Do not place the AroMini near an HVAC return grill, exhaust fan or vent, open door or a window as that will cause the scent to escape the space. Remember you want to work with the natural airflow not against it.

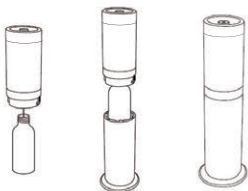
**Setting Scent Intensity:** You are now ready to start scenting. Remember, AroMini is a high performance adjustable device capable of scenting spaces from 10 to 1,000 sq.ft. Once the fragrance is in the device, basic operation is simply adjusting the scent level to match the room size, conditions, and your taste. Simply turn the device ON by rotating the volume knob to Min. Start at minimum and watch the scent spread through out your space. If needed adjust accordingly. This is a unique and powerful performance feature of AroMini. Once you have chosen the right setting, you should only have to adjust slightly with the different fragrances.

**IMPORTANT:** Keep nose clear from fragrance output when the device is operating. Instead, wave air towards nose to experience fragrance.

**TIP:** As a rough estimate, start with a setting level at Min. When you change a scent level give the AroMini some time to equalize the scent level through out the space before you decide if you need to adjust.

## Installing the Fragrance Bottle

1. Screw the bottle into the diffuser
2. Insert the bottle and diffuser into the base part
3. Lock it firmly



## Cleaning the Diffuser

You should clean your AroMini when:

- You refill the bottle
- You switch to a new essential oil
- You can no longer smell the scent (and you have made sure the bottle isn't empty)

## How to clean your AroMini:

1. Turn the device off
2. Unscrew the bottle and pour out any remaining oil inside
3. Fill the bottle with rubbing alcohol
4. Turn the device back on and let it run for 15-20 minutes
5. Replace the rubbing alcohol with your favorite AromaTech essential oil blend and continue using your AroMini as normal



## CAUTIONS

- Use only the power adapter supplied with this unit.
- Never operate the diffuser if the power adapter is damaged or any part of the unit is broken.
- Never attempt to service the device in any way except for as described in the “Cleaning the Diffuser” section of this manual.
- Do not attempt to disassemble or repair the diffuser; should you encounter a problem, please call 1.888.276.6245 or email [help@aromatechsystems.com](mailto:help@aromatechsystems.com) for assistance.
- In case of smoke, unusual scent, loud noise, or other malfunction, immediately unplug the device and discontinue use.
- When moving the device, always keep it in an upright position and secure with both hands.
- Always place the device on a stable, level surface.
- Make sure your hands are dry before plugging the device into the wall socket.
- Do not add water or any other liquids to the bottle with the aroma oil.
- Do not immerse the device in water.
- Do not move, tilt, or refill the device while in operation.
- Run the device with rubbing alcohol instead of oil once a month for 10-15 minutes to prevent clogging.
- Always turn off and unplug the device when not in use.
- Do not cover the diffuser or power adapter with any objects when plugged in.
- Position the device at least 24” from the ceiling.
- Use only AromaTech diffuser blends as other oils may contain ingredients such as base oils or fragrances that could cause the diffuser to malfunction. Continuing to use may result in fire or electrical shock.
- Keep out of reach of children and pets.
- Keep nose clear of fragrance output; instead, use your hand to wave air toward your nose to experience fragrance.
- Store at 0°C - 50°C (32°F - 122°F) and 5% - 95% humidity.

## FAQs

### **Q: What size space will this diffuser scent?**

You can adjust the intensity of your AroMini, making it suitable for spaces from 10 to 1,000 sq.ft. (1 to 93 sq. m.).

### **Q: Where should I place the diffuser?**

The AroMini should be placed on a flat surface in an area with plenty of airflow.

### **Q: How high should I set the intensity?**

The AroMini is adjustable for smaller or larger spaces. Avoid setting the intensity too high for a small space, which may cause discomfort. To adjust, simply move the dial on the power adapter between Min. and Max. to achieve the desired intensity.

### **Q: Can I use any essential oils in this diffuser?**

You should use only AromaTech oils because other oils and blends may contain heavy carrier oils that could cause your AroMini to malfunction or clog.

### **Q: Does the AroMini run continuously?**

The AroMini diffuses for 150 seconds and shuts off for 30 seconds to provide the ultimate scenting experience.

## FAQs (Continued)

### **Q: Can I connect the AroMini to an external digital or Wi-Fi 24/7 timer?**

Absolutely. We encourage you to connect your AroMini to an external digital 24-hour timer or a Wi-Fi timer and control when you want your device to diffuse. You can purchase a digital timer from [aromatechscents.com](http://aromatechscents.com) or any other retailer.

### **Q: Is this diffuser safe for children and pets?**

Yes! When used as directed, your AroMini is completely safe for the whole family.

### **Q: Is this diffuser eco-friendly?**

The AroMini is one of the most environmentally-friendly products you can buy. Made from recycled aluminum, the AroMini uses no phthalates or propellants and produces no VOCs (volatile organic compounds).

### **Q: What is the warranty on the AroMini?**

This product and all products designed by AromaTech include a one-year limited warranty. Using oils besides AromaTech oils may cause the AroMini to malfunction and will void the warranty. Please call 1.888.276.6245 or email [help@aromatechsystems.com](mailto:help@aromatechsystems.com) with any questions.

CONDITION	POSSIBLE REASON	SOLUTION
Device will not turn on.	<ol style="list-style-type: none"> <li>The top and bottom of the diffuser isn't connected properly.</li> <li>Device is not connected to the power outlet.</li> <li>Faulty power supply adapter.</li> </ol>	<ol style="list-style-type: none"> <li>Make sure the top and the bottom of the diffuser is locked firmly and snugly. Once the diffuser is connected, plug the diffuser into the outlet and turn it ON.</li> <li>Check if the device is connected to power.</li> <li>Replace power supply adaptor.</li> </ol>
The device is not diffusing; can't hear the air pump.	<ol style="list-style-type: none"> <li>Device is in pause/rest mode between cycles. Standard rest mode is 150 sec ON and 30 sec OFF.</li> <li>Pump failed.</li> </ol>	<ol style="list-style-type: none"> <li>Wait for the device to turn back on by itself after the 150 ON and 30 OFF cycle.</li> <li>Replace pump. Contact AromaTech support.</li> </ol>
Device is working but no mist is visible and/or can't smell the scent.	<ol style="list-style-type: none"> <li>Diffuser core is clogged.</li> <li>Device is in pause/rest mode.</li> </ol>	<ol style="list-style-type: none"> <li>Replace oil with rubbing alcohol and run through the diffuser for 15 minutes. If that doesn't work, contact us to replace diffuser core.</li> <li>Wait for device to turn back on by itself.</li> </ol>
Unusual and loud noise.	Pump is damaged.	Contact support to replace the pump.
Oil is leaking.	<ol style="list-style-type: none"> <li>Make sure the device is always upright.</li> <li>Seal is broken, missing, or damaged.</li> <li>Bottle is not screwed in straight and firm.</li> </ol>	<ol style="list-style-type: none"> <li>If the device tipped, stand it upright.</li> <li>Change the rubber seal.</li> <li>Make sure the bottle is screwed in straight and snug.</li> </ol>



Designed by AromaTech Inc.  
Vancouver, BC, Canada

**Consumer**

<http://aromatechscent.com>

Toll Free: +1.888.276.6245

**Business**

<http://aromatechsystems.com>

Toll Free: +1.877.347.5239

**Support**

<http://support.aromatechsystems.com>

[help@aromatechsystems.com](mailto:help@aromatechsystems.com)